

Laboratorio Emotest s.r.l.

MONTHLY HAEMATOLOGY

CYCLE 16 SAMPLE 3

Explanation of codes used in this report

R - Results removed due to reconstitution error
N - No result returned
C - Result corrected

Authorised by: Stephen Doherty, RIQAS Manager

Issue No: 1

Issue Date: 15/03/2023

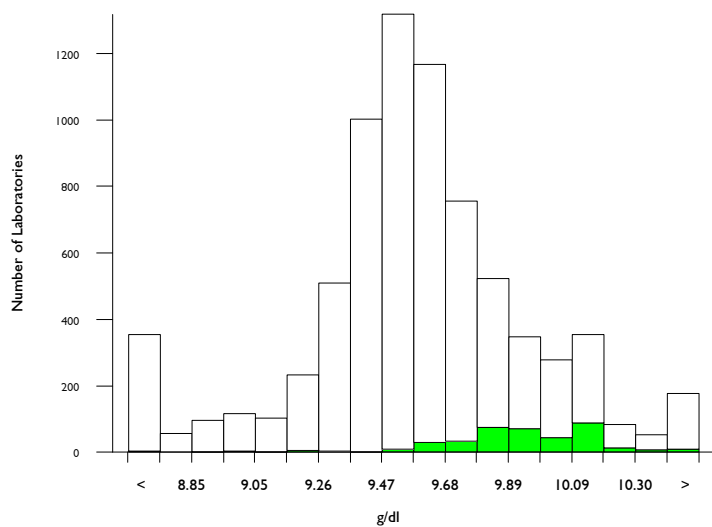
Randox Laboratories Limited
55 Diamond Road
CRUMLIN BT29 4QY
Tel: +44 (0)28 9445 4399
Fax: +44 (0)28 9445 4398
Email: mail@riqas.com

Haemoglobin, g/dl

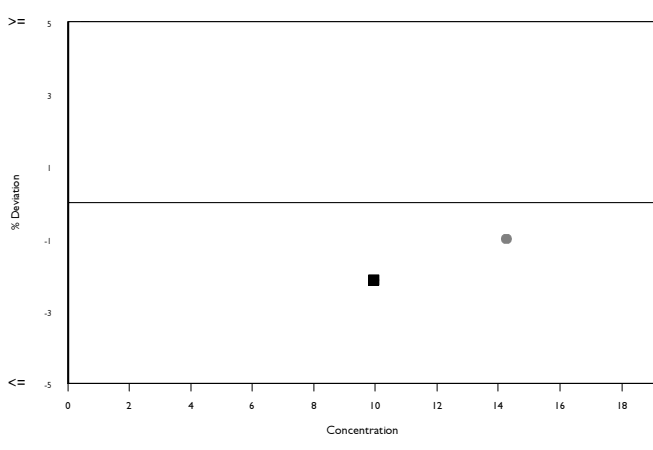
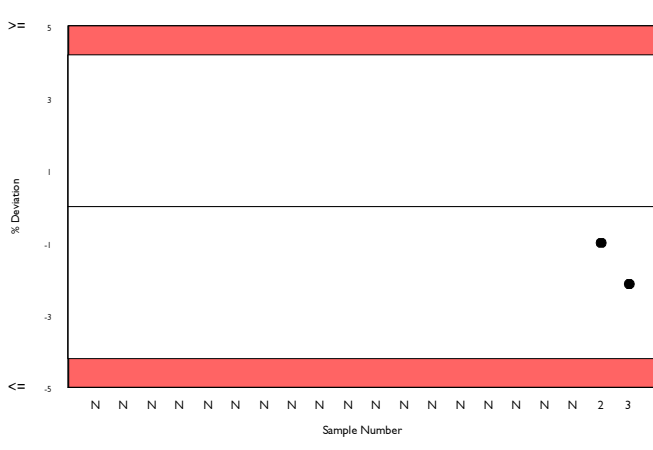
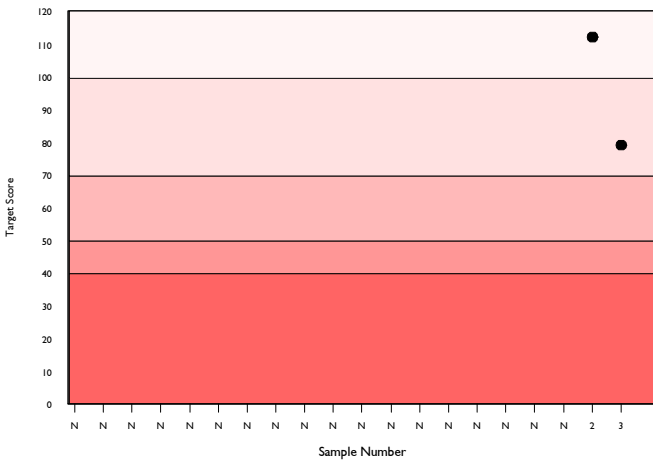
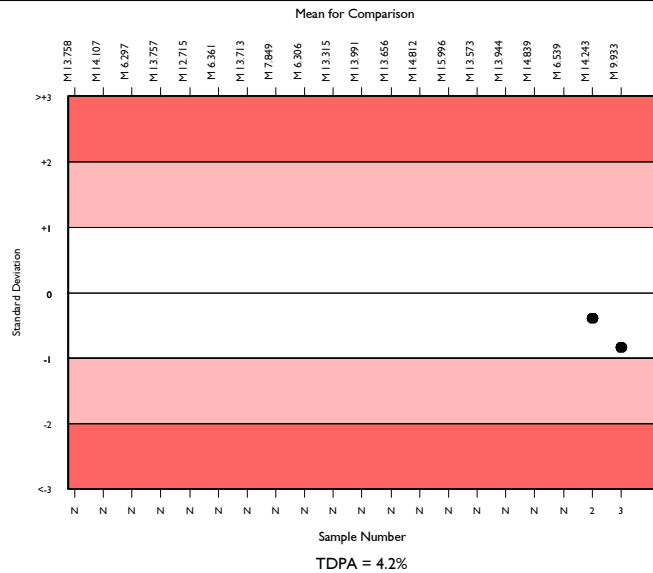
	N	Mean	CV%	U _m	SDPA	Exc.
All Methods	6929	9.579	2.9	0.00	0.24	587
Abbott Cell-Dyn Ruby	363	9.933	1.9	0.01	0.25	31

▲ Your Result	9.720	SDI	-0.84
		RMSDI	Too Few
■ Mean for Comparison	9.933	TS	79
		RMTS	Too Few
		%DEV	-2.1
		RM%DEV	Too Few

Acceptable limits derived from Biological Variation	N/A
Acceptable limits of performance for RIQAS	4.20%



Method	N	Mean	CV%	U _m
Sysmex XN Series	1568	9.539	1.3	0.00
Sysmex XN-L Series (330/350/450/550)	644	9.412	1.1	0.01
Abbott Cell-Dyn Ruby	363	9.933	1.9	0.01
Mindray BC-6000/6200/6600/6800/6800Plus	336	9.612	1.2	0.01
Beckman Coulter DxH 600/800/900 Series	336	9.467	1.2	0.01
Calculated from HCT	261	8.715	4.3	0.03
Sysmex XP Series	247	9.540	1.8	0.01
Siemens/Bayer Advia 120/2120	235	10.017	1.5	0.01
Sysmex XS series	239	9.469	1.4	0.01
Mindray BC 1000/2000/3000 series	209	9.700	3.3	0.03
Manual Methods	165	8.737	4.6	0.04
Sysmex XT series	154	9.591	1.1	0.01
Mindray BC 5100/5180/5300/5380/5390	144	9.702	1.9	0.02
Mindray BC 5000/5150/5140/5130/5120	124	9.556	1.5	0.02
Nihon Kohden Celltac Alpha/plus	121	9.947	3.1	0.04
ABX Micros/Minos/ABC VET	116	9.569	3.6	0.04
Horiba Yumizen H500/ 550	108	9.528	1.5	0.02
Beckman Coulter DxH 500 Series	104	9.065	2.5	0.03
Sysmex KX 21	86	9.479	2.1	0.03
Horiba ABX Pentra 60/80/XLR	89	9.526	1.6	0.02
Mindray BC 10/20/30	81	9.800	2.3	0.03

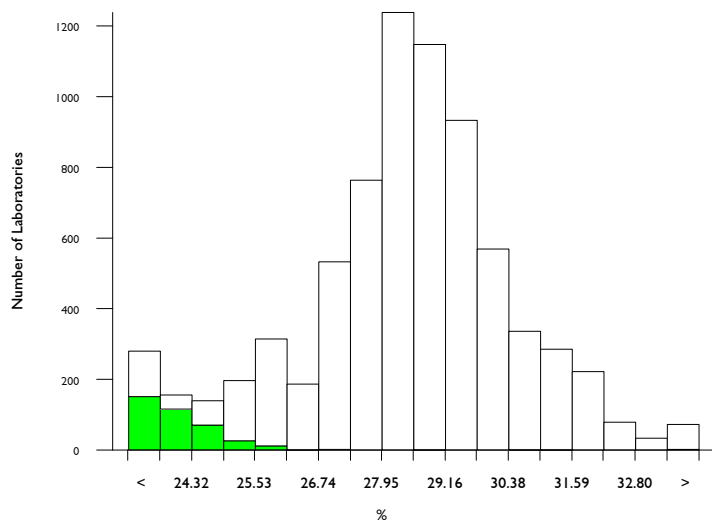
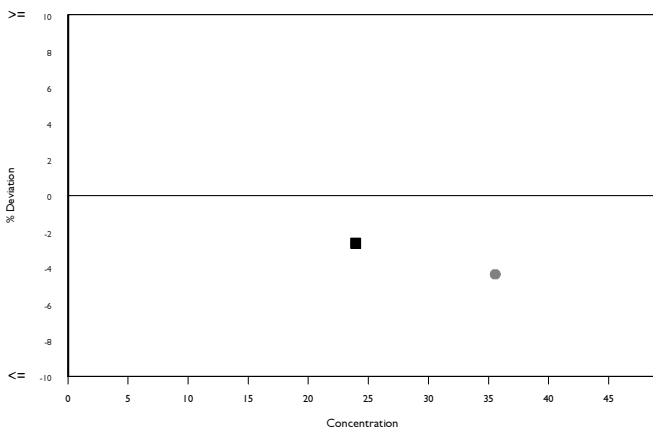
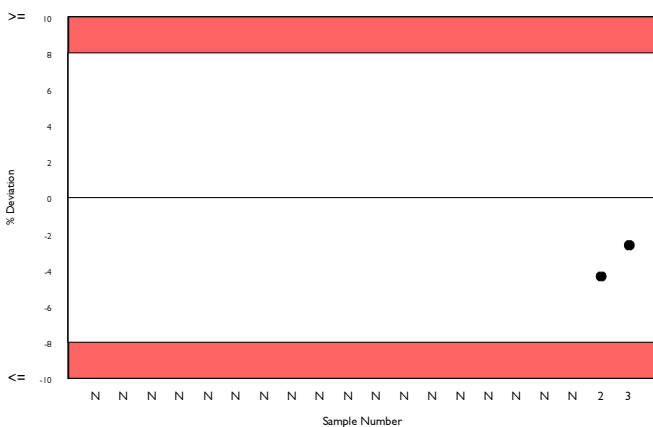
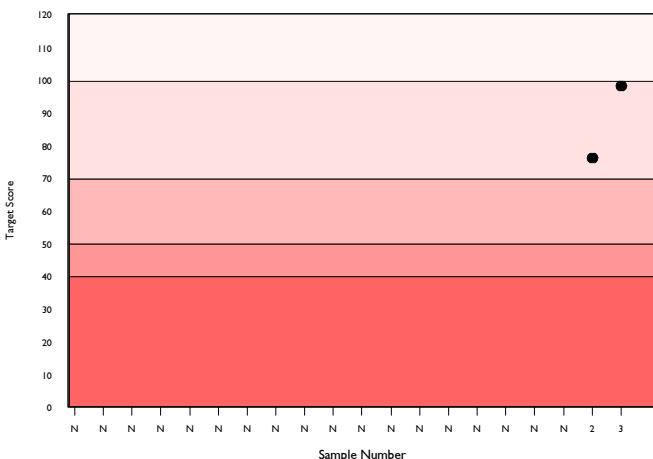
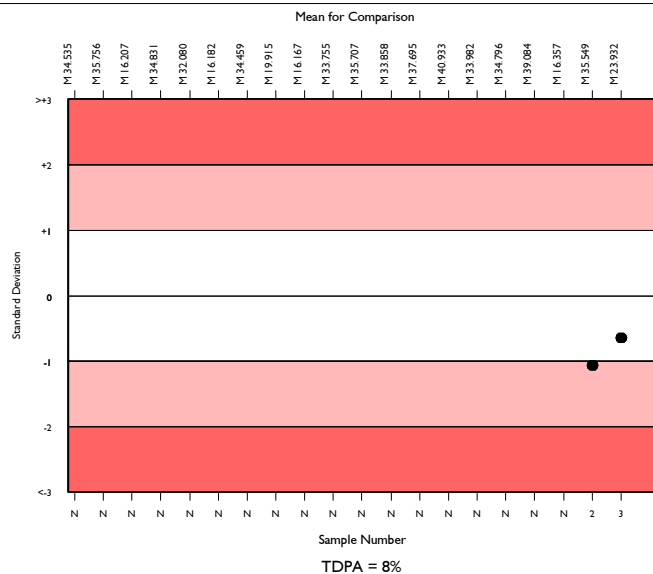


Haematocrit (HCT), %

	N	Mean	CV%	U _m	SDPA	Exc.
All Methods	6902	28.563	5.7	0.02	1.17	584
Abbott Cell-Dyn Ruby	353	23.932	3.0	0.05	0.98	32

▲ Your Result	23.300	SDI	-0.65
		RMSDI	Too Few
■ Mean for Comparison	23.932	TS	98
		RMTS	Too Few
		%DEV	-2.6
		RM%DEV	Too Few

Acceptable limits derived from Biological Variation	N/A
Acceptable limits of performance for RIQAS	8.00%



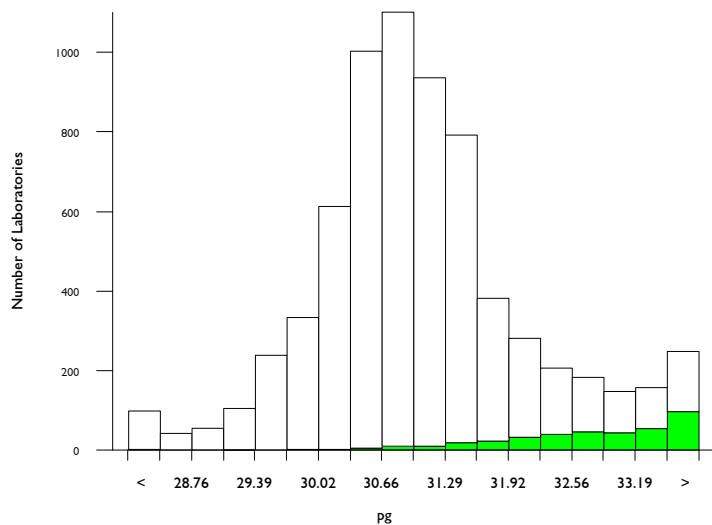
Method	N	Mean	CV%	U _m
Sysmex XN Series	1553	28.507	2.1	0.02
Sysmex XN-L Series (330/350/450/550)	635	28.467	2.2	0.03
Abbott Cell-Dyn Ruby	353	23.932	3.0	0.05
Mindray BC-6000/6200/6600/6800/6800Plus	342	31.390	2.0	0.04
Beckman Coulter DxH 600/800/900 Series	324	29.436	1.8	0.04
Microhematocrit Centrifugation	278	26.457	3.3	0.06
Sysmex XP Series	246	27.385	2.7	0.06
Siemens/Bayer Advia 120/2120	238	25.397	2.8	0.06
Sysmex XS series	234	29.076	2.4	0.06
Mindray BC 1000/2000/3000 series	204	29.546	3.7	0.10
Manual Methods	165	26.331	3.5	0.09
Sysmex XT series	160	29.777	2.7	0.08
Mindray BC 5100/5180/5300/5380/5390	148	30.073	3.0	0.09
Mindray BC 5000/5150/5140/5130/5120	128	29.604	2.9	0.09
Nihon Kohden Celltac Alpha/plus	121	29.506	3.9	0.13
ABX Micros/Minos/ABC VET	117	28.071	4.1	0.13
Horiba Yumizen H500/ 550	110	27.434	2.6	0.09
Beckman Coulter DxH 500 Series	103	28.765	2.4	0.09
Sysmex KX 21	87	27.556	3.0	0.11
Horiba ABX Pentra 60/80/XLR	86	27.222	2.3	0.09
Mindray BC 10/20/30	83	28.859	2.6	0.10

MCH, pg

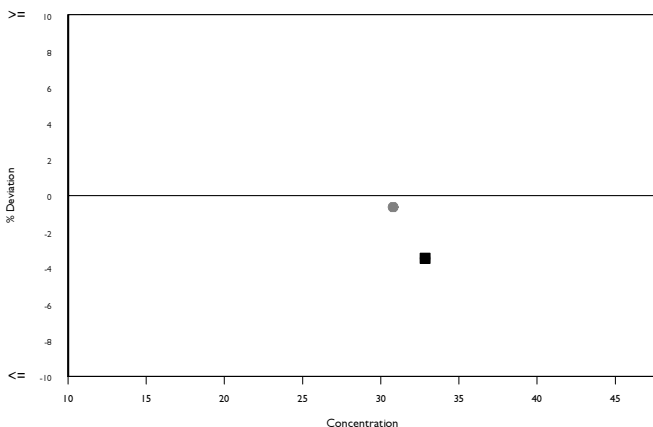
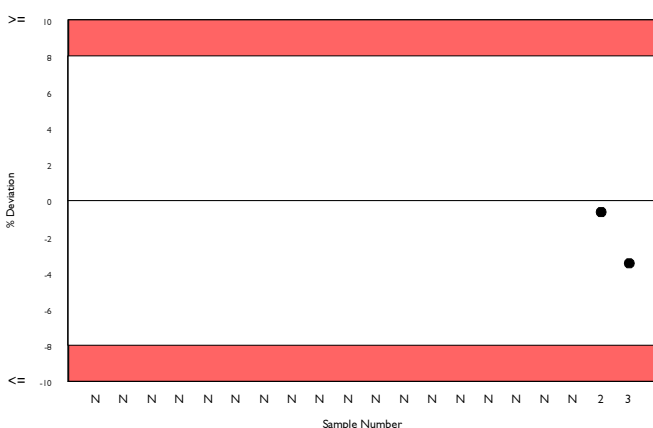
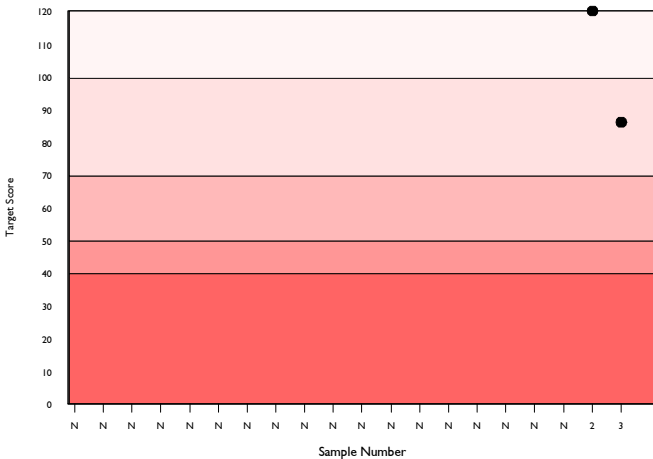
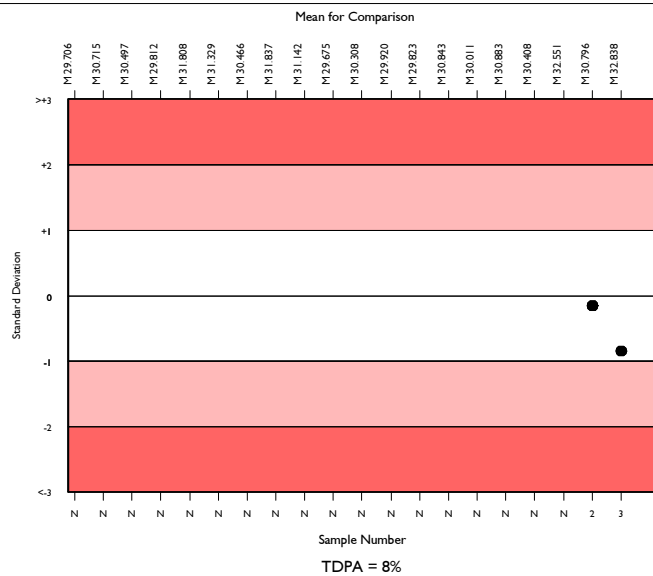
	N	Mean	CV%	U _m	SDPA	Exc.
All Methods	6403	30.979	2.7	0.01	1.26	510
Abbott Cell-Dyn Ruby	355	32.838	2.9	0.06	1.34	32

▲ Your Result	31.700	SDI	-0.85
		RMSDI	Too Few
■ Mean for Comparison	32.838	TS	86
		RMTS	Too Few
		%DEV	-3.5
		RM%DEV	Too Few

Acceptable limits derived from Biological Variation	N/A
Acceptable limits of performance for RIQAS	8.00%



Method	N	Mean	CV%	U _m
Sysmex XN Series	1533	30.877	1.4	0.01
Sysmex XN-L Series (330/350/450/550)	635	30.826	1.2	0.02
Abbott Cell-Dyn Ruby	355	32.838	2.9	0.06
Mindray BC-6000/6200/6600/6800/6800Plus	346	30.650	1.5	0.03
Beckman Coulter DxH 600/800/900 Series	329	30.476	1.6	0.03
Sysmex XP Series	247	30.577	2.3	0.06
Sysmex XS series	227	30.835	1.6	0.04
Siemens/Bayer Advia 120/2120	227	32.241	1.9	0.05
Mindray BC 1000/2000/3000 series	207	30.869	3.6	0.10
Sysmex XT series	155	30.398	1.7	0.05
Mindray BC 5100/5180/5300/5380/5390	143	31.403	1.8	0.06
Mindray BC 5000/5150/5140/5130/5120	129	30.916	2.4	0.08
Nihon Kohden Celltac Alpha/plus	120	31.698	3.2	0.11
ABX Micros/Minos/ABC VET	107	30.828	3.1	0.12
Horiba Yumizen H500/ 550	110	30.640	2.1	0.08
Beckman Coulter DxH 500 Series	102	29.314	2.4	0.09
Horiba ABX Pentra 60/80/XLR	87	30.777	1.7	0.07
Sysmex KX 21	83	30.563	2.3	0.10
Mindray BC 10/20/30	83	32.192	2.7	0.12
Abbott Cell-Dyn Emerald 22	67	30.188	2.3	0.11
Abbott Alinity iq	69	32.543	2.1	0.10

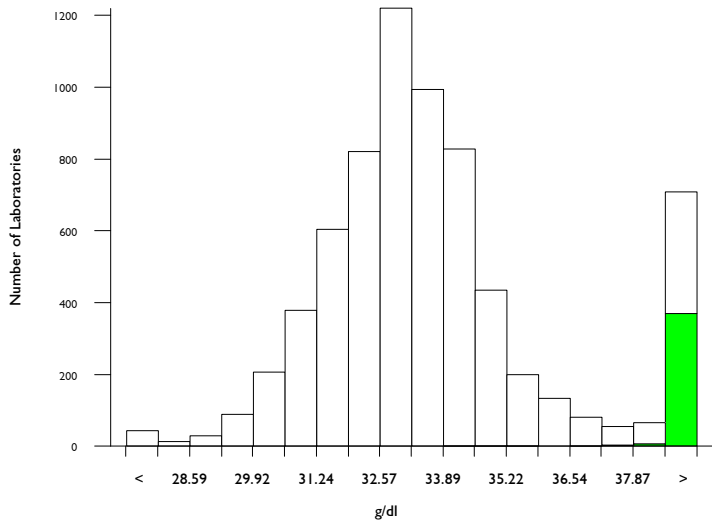


MCHC, g/dl

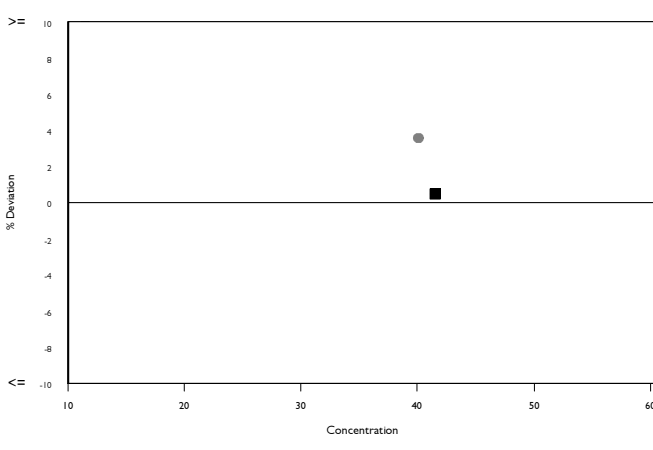
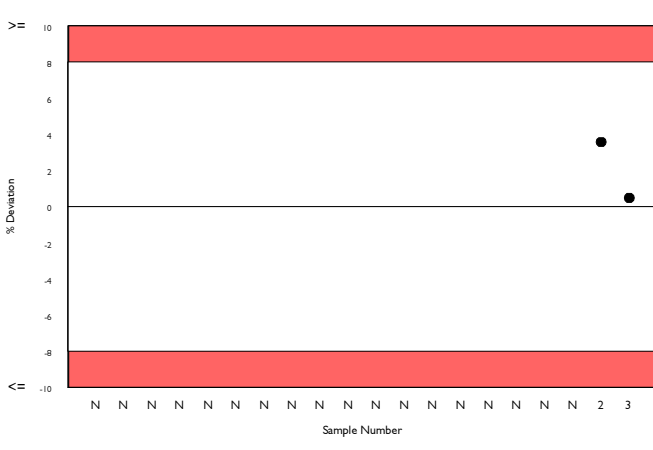
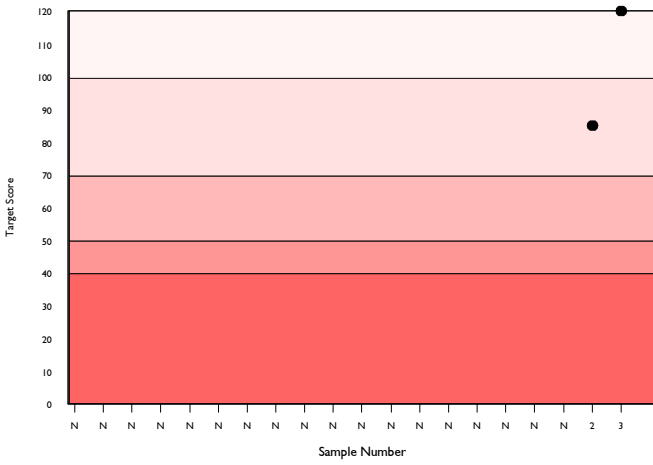
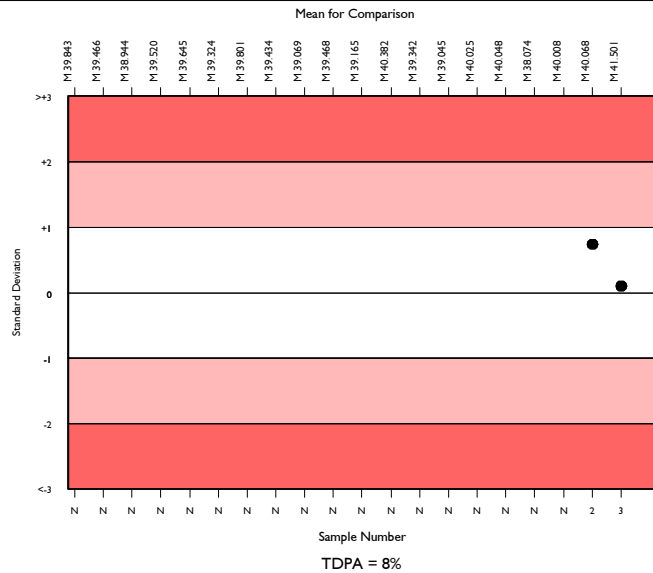
	N	Mean	CV%	U _m	SDPA	Exc.
All Methods	6231	33.234	5.3	0.03	1.62	661
Abbott Cell-Dyn Ruby	352	41.501	3.1	0.09	2.02	31

▲ Your Result	41.700	SDI	0.10
		RMSDI	Too Few
■ Mean for Comparison	41.501	TS	120
		RMTS	Too Few
		%DEV	0.5
		RM%DEV	Too Few

Acceptable limits derived from Biological Variation	N/A
Acceptable limits of performance for RIQAS	8.00%



Method	N	Mean	CV%	U _m
Sysmex XN Series	1550	33.485	2.1	0.02
Sysmex XN-L Series (330/350/450/550)	631	33.079	2.0	0.03
Abbott Cell-Dyn Ruby	352	41.501	3.1	0.09
Mindray BC-6000/6200/6600/6800/6800Plus	343	30.608	1.8	0.04
Beckman Coulter DxH 600/800/900 Series	327	32.140	2.0	0.04
Sysmex XP Series	245	34.797	3.3	0.09
Sysmex XS series	233	32.596	2.5	0.07
Siemens/Bayer Advia 120/2120	226	39.481	2.8	0.09
Mindray BC 1000/2000/3000 series	195	32.792	4.1	0.12
Sysmex XT series	159	32.229	2.6	0.08
Mindray BC 5100/5180/5300/5380/5390	146	32.262	3.2	0.11
Mindray BC 5000/5150/5140/5130/5120	129	32.219	2.6	0.09
Nihon Kohden Celltac Alpha/plus	112	33.561	4.7	0.19
ABX Micros/Minos/ABC VET	105	34.018	3.6	0.15
Horiba Yumizen H500/ 550	103	34.776	2.5	0.11
Beckman Coulter DxH 500 Series	102	31.492	2.6	0.10
Horiba ABX Pentra 60/80/XLR	87	34.943	2.1	0.10
Sysmex KX 21	87	34.660	3.5	0.16
Mindray BC 10/20/30	83	33.943	3.2	0.15
Abbott Cell-Dyn Emerald 22	72	32.982	3.6	0.17
Erba Lachema Elite series	61	32.095	4.0	0.20

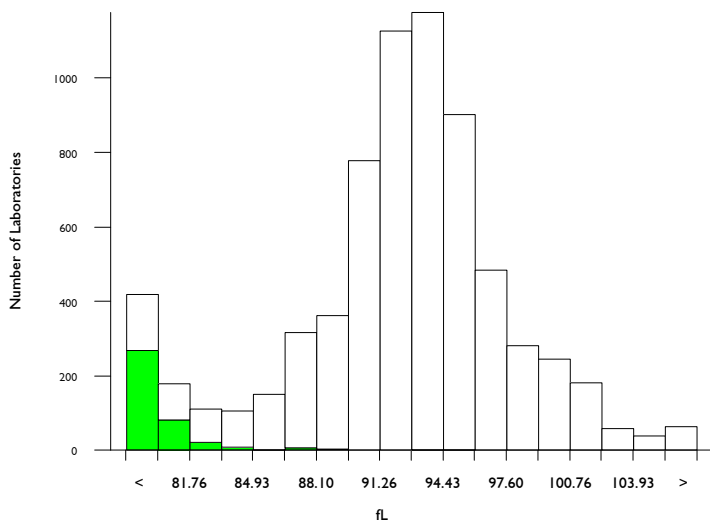


MCV, fL

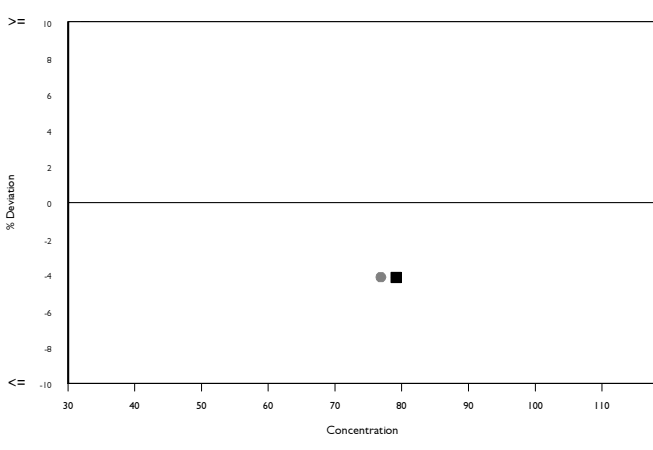
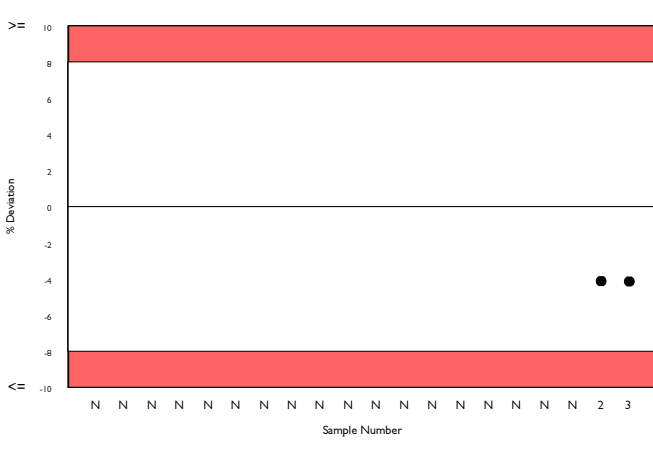
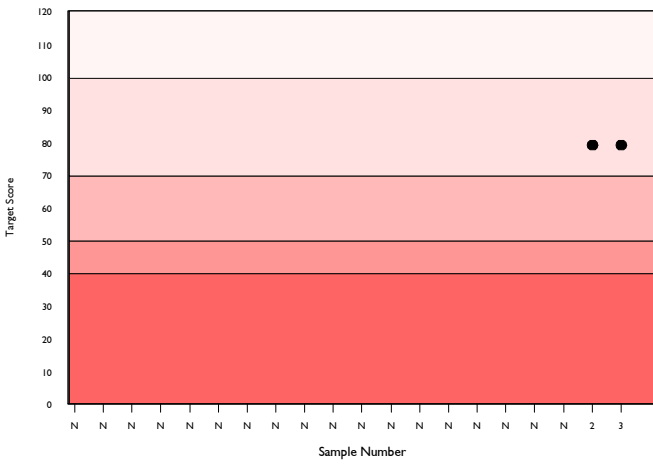
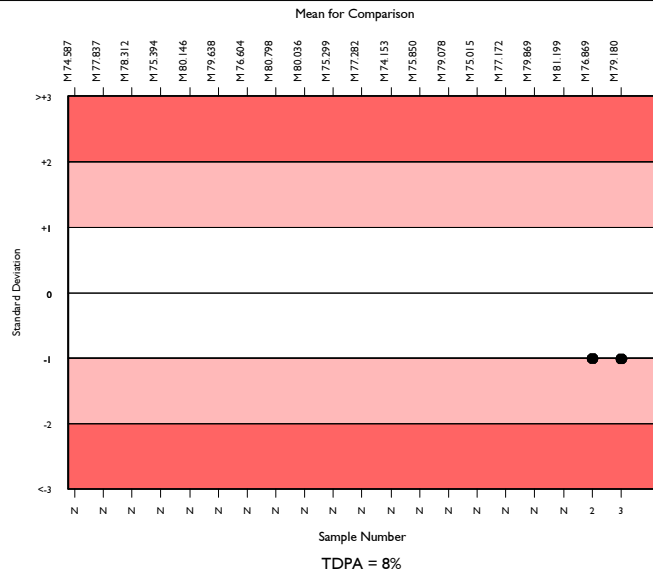
	N	Mean	CV%	U _m	SDPA	Exc.
All Methods	6355	92.850	4.5	0.07	3.79	610
Abbott Cell-Dyn Ruby	352	79.180	2.2	0.11	3.23	37

▲ Your Result	75.900	SDI	-1.01
		RMSDI	Too Few
■ Mean for Comparison	79.180	TS	79
		RMTS	Too Few
		%DEV	-4.1
		RM%DEV	Too Few

Acceptable limits derived from Biological Variation	N/A
Acceptable limits of performance for RIQAS	8.00%



Method	N	Mean	CV%	U _m
Siemens XN Series	1540	92.283	1.7	0.05
Siemens XN-L Series (330/350/450/550)	631	93.231	1.6	0.08
Abbott Cell-Dyn Ruby	352	79.180	2.2	0.11
Mindray BC-6000/6200/6600/6800/6800Plus	347	100.185	1.5	0.10
Beckman Coulter DxH 600/800/900 Series	331	94.640	1.2	0.08
Siemens XP Series	241	87.817	2.1	0.15
Siemens/Bayer Advia 120/2120	230	81.813	2.0	0.14
Siemens XS series	232	94.454	2.3	0.18
Mindray BC 1000/2000/3000 series	200	93.803	3.0	0.25
Siemens XT series	149	94.676	1.9	0.18
Mindray BC 5100/5180/5300/5380/5390	146	96.989	2.1	0.21
Mindray BC 5000/5150/5140/5130/5120	126	96.167	1.8	0.20
Nihon Kohden Celltac Alpha/plus	117	93.862	2.7	0.29
ABX Micros/Minos/ABC VET	112	90.358	3.4	0.37
Horiba Yumizen H500/ 550	104	87.908	1.9	0.20
Beckman Coulter DxH 500 Series	105	92.992	1.9	0.22
Horiba ABX Pentra 60/80/XLR	80	88.214	1.7	0.21
Siemens KX 21	83	88.622	2.5	0.31
Mindray BC 10/20/30	82	94.593	2.2	0.28
Abbott Cell-Dyn Emerald 22	70	91.366	2.2	0.30
Erba Lachema Elite series	61	95.856	2.5	0.38

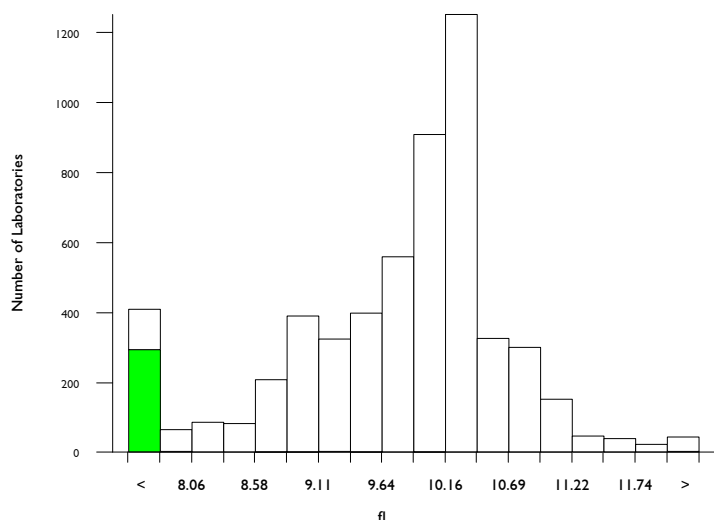


Mean Platelet Volume, fL

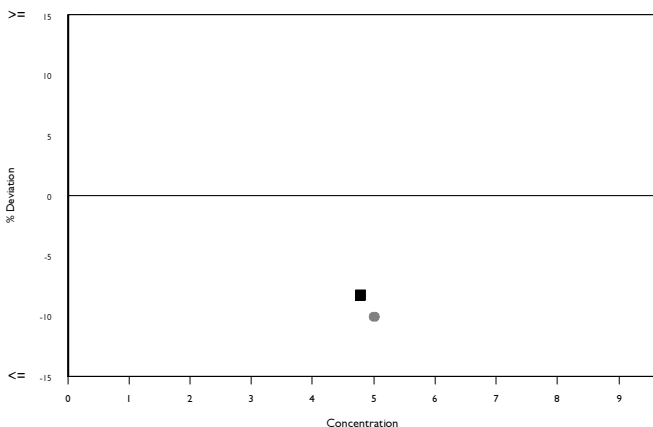
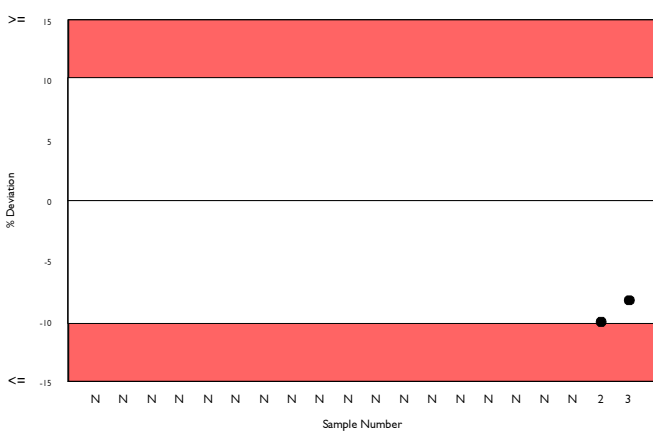
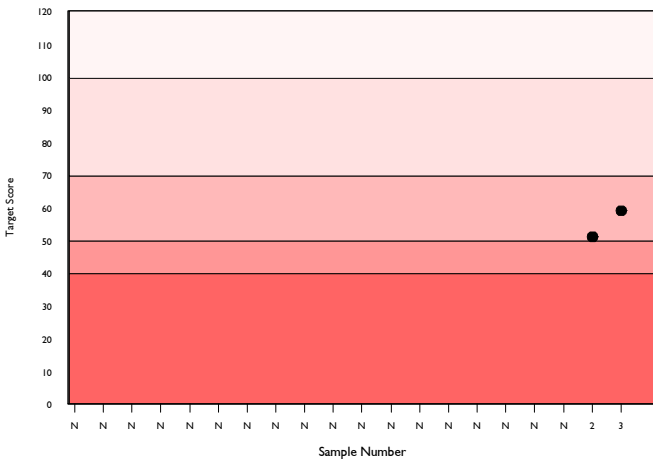
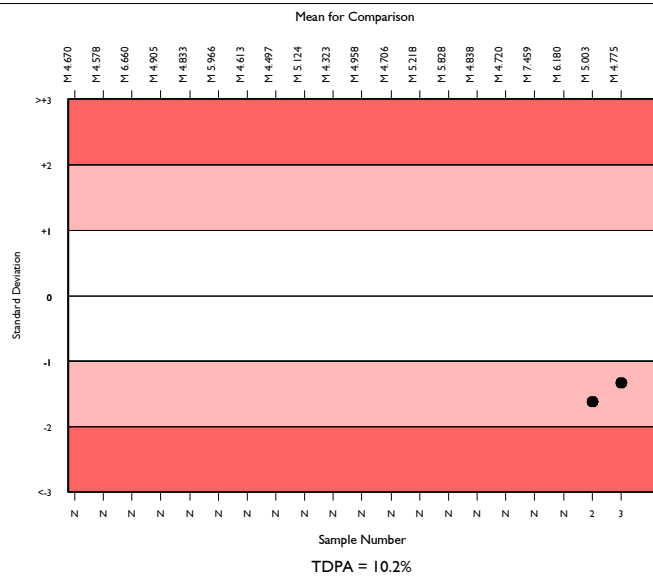
	N	Mean	CV%	U _m	SDPA	Exc.
All Methods	5132	9.905	7.1	0.01	0.61	463
Abbott Cell-Dyn Ruby	270	4.775	6.9	0.03	0.30	33

▲ Your Result	4.380	SDI	-1.33
		RMSDI	Too Few
■ Mean for Comparison	4.775	TS	59
		RMTS	Too Few
		%DEV	-8.3
		RM%DEV	Too Few

Acceptable limits derived from Biological Variation	N/A
Acceptable limits of performance for RIQAS	10.20%



Method	N	Mean	CV%	U _m
Sysmex XN Series	1259	10.162	1.6	0.01
Sysmex XN-L Series (330/350/450/550)	436	10.216	1.7	0.01
Mindray BC-6000/6200/6600/6800/6800Plus	321	10.669	3.4	0.03
Abbott Cell-Dyn Ruby	270	4.775	6.9	0.03
Beckman Coulter DxH 600/800/900 Series	264	9.140	2.1	0.01
Sysmex XP Series	188	9.643	1.8	0.02
Sysmex XS series	178	10.220	2.7	0.03
Mindray BC 1000/2000/3000 series	190	9.400	7.0	0.06
Siemens/Bayer Advia 120/2120	166	10.933	5.0	0.05
Sysmex XT series	129	9.918	2.0	0.02
Mindray BC 5000/5150/5140/5130/5120	115	10.567	1.8	0.02
Mindray BC 5100/5180/5300/5380	100	9.306	2.1	0.02
Nihon Kohden Celltac Alpha/plus	96	8.869	6.3	0.07
Horiba Yumizen H500/ 550	93	10.687	4.0	0.06
Beckman Coulter DxH 500 Series	89	9.274	3.5	0.04
ABX Micros/Minos/ABC VET	72	8.673	5.5	0.07
Horiba ABX Pentra 60/80/XLR	73	9.844	4.3	0.06
Mindray BC 10/20/30	70	10.314	2.6	0.04
Sysmex KX 21	64	9.574	3.1	0.05
Abbott Cell-Dyn Emerald 22	50	10.098	2.4	0.04
Erba Lachema Elite series	53	9.828	4.7	0.08

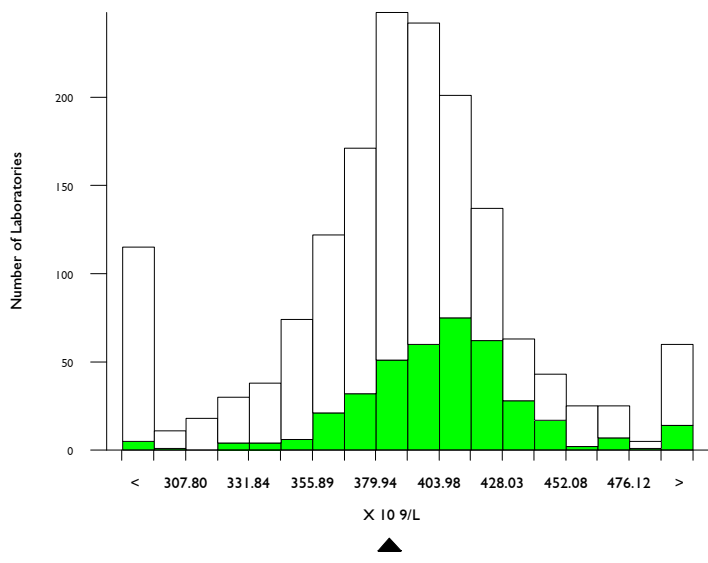


Platelets (Optical Count), X 10⁹/L

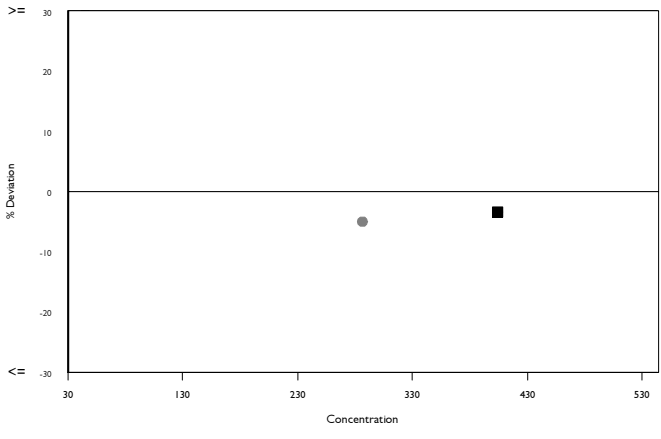
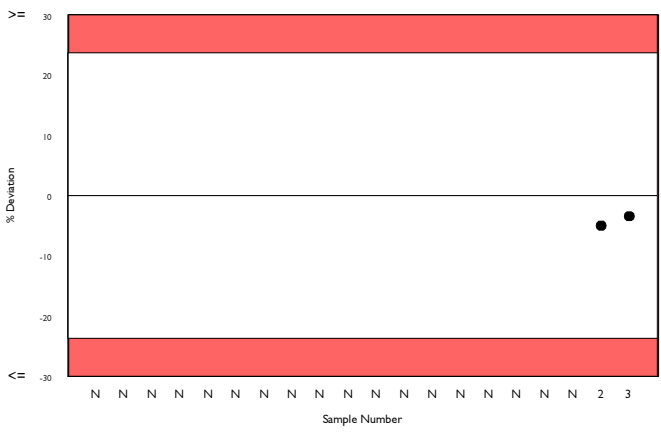
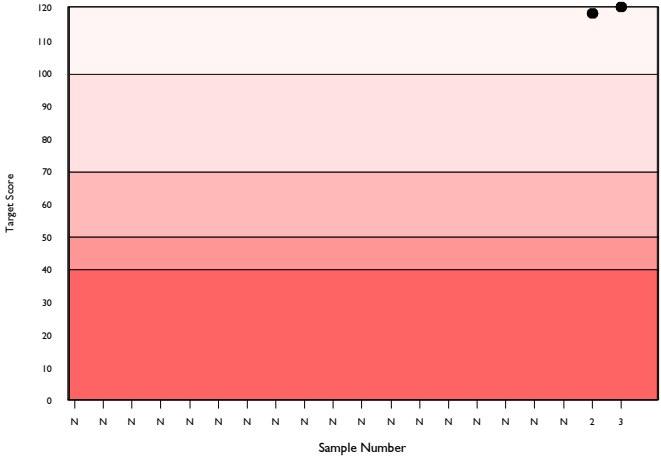
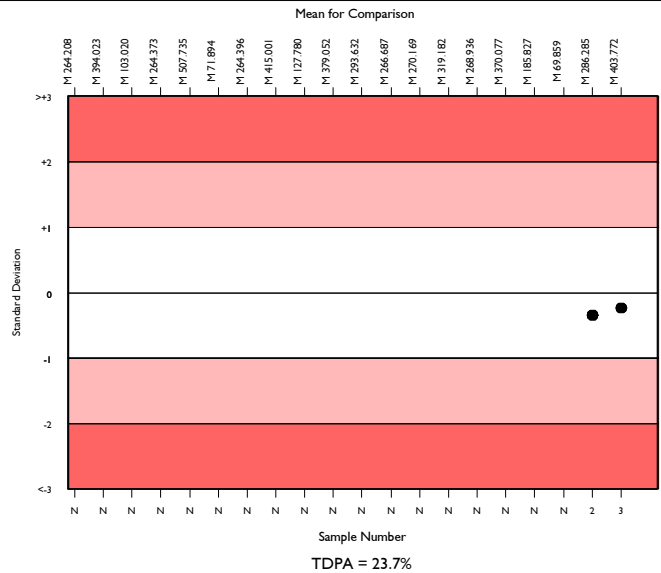
	N	Mean	CV%	U _m	SDPA	Exc.
All Methods	1449	391.965	8.2	1.05	56.48	179
Abbott Cell-Dyn Ruby	351	403.772	5.6	1.52	58.18	39

▲ Your Result	390.000	SDI	-0.24
		RMSDI	Too Few
■ Mean for Comparison	403.772	TS	120
		RMTS	Too Few
		%DEV	-3.4
		RM%DEV	Too Few

Acceptable limits derived from Biological Variation	N/A
Acceptable limits of performance for RIQAS	23.70%



Method	N	Mean	CV%	U _m
Manual Methods	344	366.292	13.9	3.43
Abbott Cell-Dyn Ruby	351	403.772	5.6	1.52
Siemens/Bayer Advia 120/2120	231	380.054	6.1	1.90
Sysmex XN Series PLT-O	128	419.954	12.0	5.58
Abbott Alinity hq	66	383.076	5.0	2.92
Mindray BC-6000/6200/6600/6800/6800Plus	63	411.175	6.3	4.08
Sysmex XN-L Series (330/350/450/550)	55	389.082	4.9	3.20
Sysmex XS Series	41	394.922	4.8	3.71
Sysmex XT Series	30	394.767	5.3	4.75
Abbott Cell-Dyn 3200	22	367.697	10.8	10.54
Beckman Coulter DxH 600/800/900 Series	19	407.911	3.0	3.47
Abbott Cell-Dyn Sapphire	13	381.385	4.3	5.63
Horiba Yumizen H500/ 550	12	418.996	8.1	12.26
Sysmex KX21	11	412.727	6.4	9.88
Sysmex XN Series PLT-F	10	383.100	3.5	5.25
Beckman Coulter DxH 500 Series	9	422.156	11.9	20.89
Horiba ABX Pentra 60/80/XLR	9	411.333	5.2	8.99
UDIHEM-D	6	421.333	10.9	23.53
ABX Micros/Minos/ABC VET	6	399.500	4.9	10.07
Horiba Yumizen H1500/ 2500	5	427.400	2.8	6.59
IDEXX ProCyte Dx Haematology Analyser	4	375.750	7.7	18.01

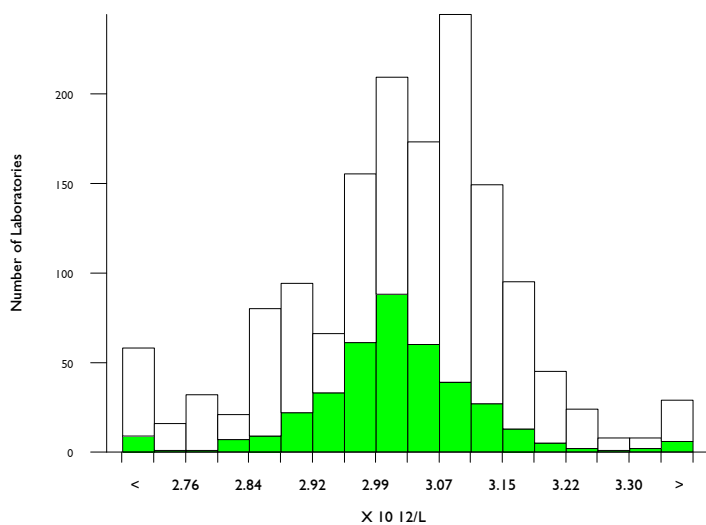


RBC (Optical Count), X 10¹²/L

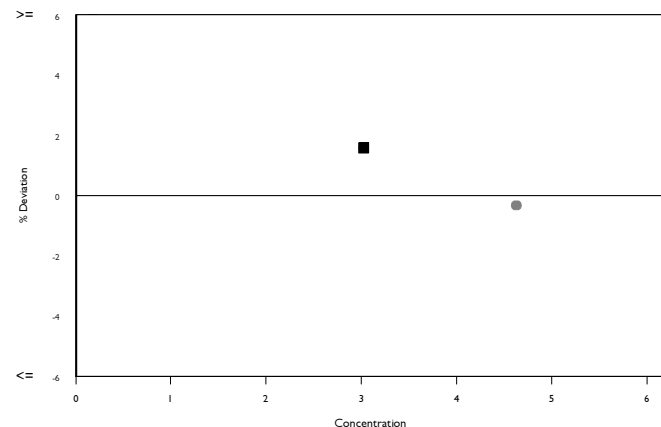
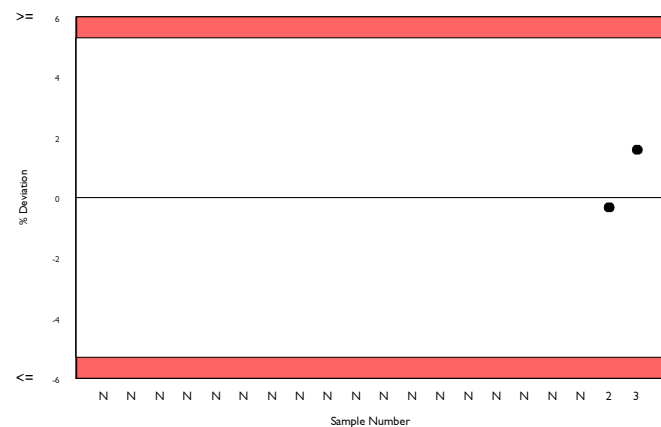
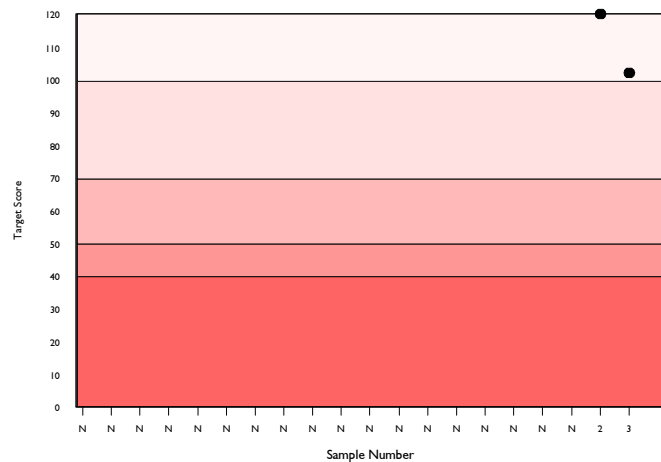
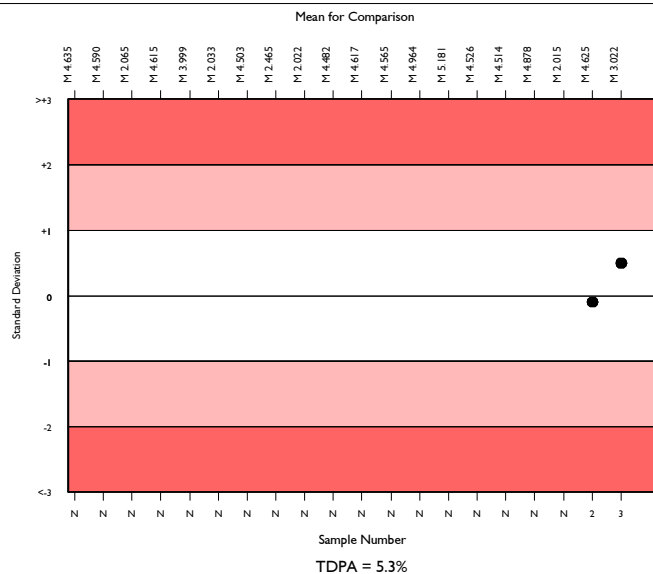
	N	Mean	CV%	U _m	SDPA	Exc.
All Methods	1386	3.036	3.4	0.00	0.10	120
Abbott Cell-Dyn Ruby	348	3.022	2.3	0.00	0.10	38

▲ Your Result	3.070	SDI	0.49
		RMSDI	Too Few
■ Mean for Comparison	3.022	TS	102
		RMTS	Too Few
		%DEV	1.6
		RM%DEV	Too Few

Acceptable limits derived from Biological Variation	N/A
Acceptable limits of performance for RIQAS	5.30%



Method	N	Mean	CV%	U _m
Abbott Cell-Dyn Ruby	348	3.022	2.3	0.00
Manual Methods	308	2.935	4.0	0.01
Siemens/Bayer Advia 120/2120	232	3.110	1.8	0.00
Sysmex XN Series	153	3.065	2.2	0.01
Abbott Alinity iq	67	2.956	1.5	0.01
Mindray BC-6000/6200/6600/6800/6800Plus	48	3.133	2.2	0.01
Sysmex XS Series	42	3.071	1.6	0.01
Sysmex XT Series	28	3.145	2.4	0.02
Abbott Cell-Dyn 3200	24	3.069	4.0	0.03
Beckman Coulter DxH 600/800/900 Series	21	3.100	1.5	0.01
Sysmex KX21	11	3.069	2.0	0.02
Horiba Yumizen H500/ 550	12	3.124	2.4	0.03
Abbott Cell-Dyn Sapphire	9	3.139	1.2	0.02
Beckman Coulter DxH 500 Series	8	3.034	4.0	0.05
Horiba ABX Pentra 60/80/XLR	8	3.099	2.8	0.04
UDIHEM-D	6	3.193	2.6	0.04
ABX Micros/Minos/ABC VET	4	3.035	3.4	0.07
Avantor Benesphera H-51	3	3.200	0.9	0.02
ABX Pentra 120/Nexus Series	3	3.077	4.3	0.10
MTI Diagnostics Auto Star Diff 5	2	3.010	0.0	0.00
Orphee Mythic 18	2	3.150	2.2	0.06

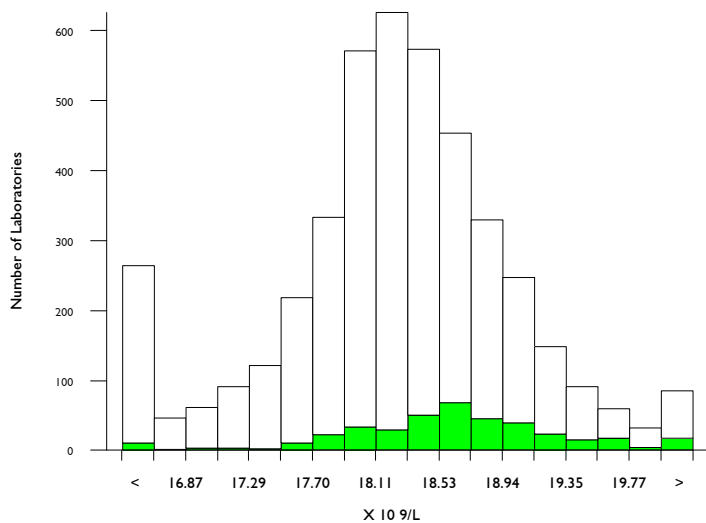


WBC (Optical Count), X 10⁹/L

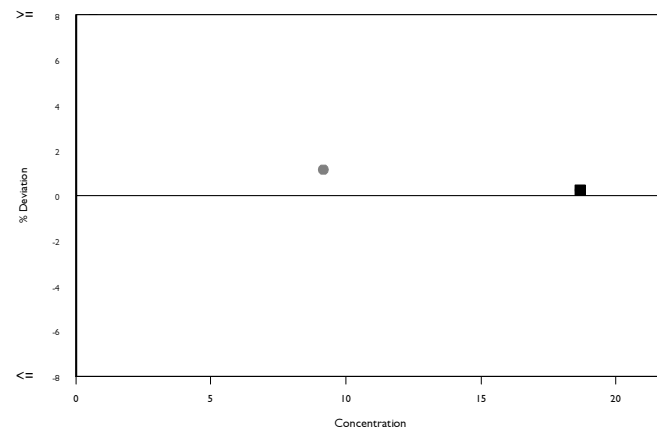
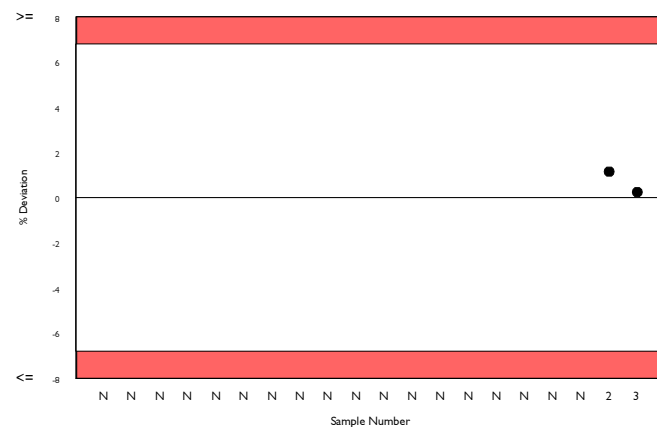
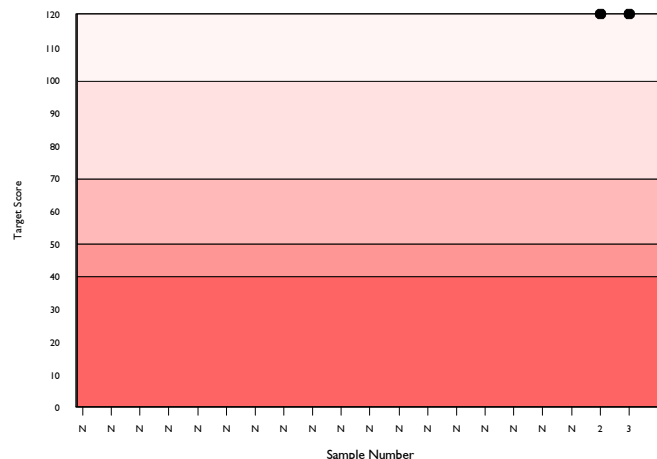
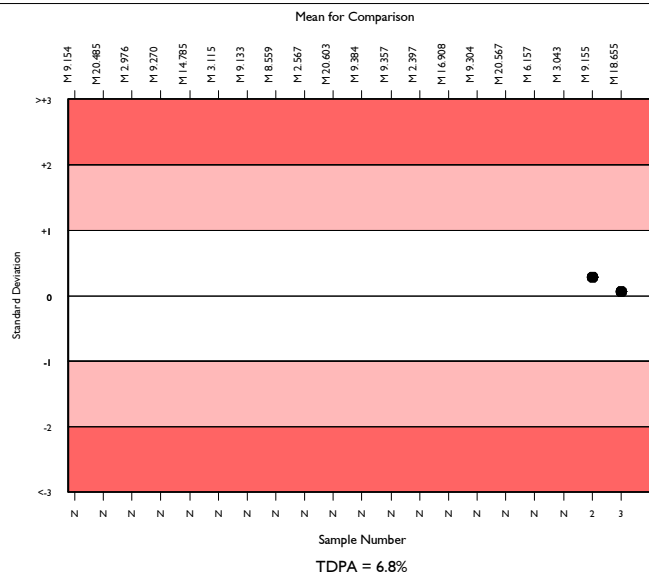
	N	Mean	CV%	U _m	SDPA	Exc.
All Methods	3913	18.324	3.0	0.01	0.76	437
Abbott Cell-Dyn Ruby	354	18.655	2.7	0.03	0.77	37

▲ Your Result	18.700	SDI	0.06
		RMSDI	Too Few
■ Mean for Comparison	18.655	TS	120
		RMTS	Too Few
		%DEV	0.2
		RM%DEV	Too Few

Acceptable limits derived from Biological Variation	N/A
Acceptable limits of performance for RIQAS	6.80%



Method	N	Mean	CV%	U _m
Sysmex XN Series	1413	18.232	1.7	0.01
Manual methods	376	18.138	5.6	0.07
Sysmex XN-L Series (330/350/450/550)	382	18.746	2.0	0.02
Abbott Cell-Dyn Ruby	354	18.655	2.7	0.03
Mindray BC-6000/6200/6600/6800/6800Plus	340	18.063	2.1	0.03
Siemens/Bayer Advia 120/2120	230	17.250	2.8	0.04
Sysmex XS Series	227	18.757	2.8	0.04
Sysmex XT Series	146	18.486	2.5	0.05
Mindray BC 5000/5150/5140/5130/5120	114	18.390	2.3	0.05
Abbott Alinity hq	68	18.059	2.3	0.06
Mindray BC 5600/5800	47	18.793	3.5	0.12
Beckman Coulter DxH 600/800/900 Series	34	19.001	2.6	0.10
Abbott Cell-Dyn 3200	22	18.430	2.0	0.10
Horiba Yumizen H500/ 550	17	17.376	2.3	0.12
Sysmex KX21	18	17.838	3.3	0.17
Abbott Cell-Dyn Sapphire	14	18.443	2.4	0.15
Beckman Coulter DxH 500 Series	12	18.614	2.5	0.17
Horiba ABX Pentra 60/80/XLR	8	18.429	0.7	0.05
Mindray BC760/780	10	18.964	1.6	0.12
Shenzhen Dymind DF50	8	19.073	2.3	0.19
Mindray BC 5200/5500	7	18.776	3.6	0.32



Analyte	Mean for Comparison	Your Result	SDI	RMSDI	%DEV	RM%DEV	TS	RMTS	Performance
Haemoglobin	9.933	9.720	-0.84	Too Few	-2.1	Too Few	79	Too Few	
Haematocrit (HCT)	23.932	23.300	-0.65	Too Few	-2.6	Too Few	98	Too Few	
MCH	32.838	31.700	-0.85	Too Few	-3.5	Too Few	86	Too Few	
MCHC	41.501	41.700	0.10	Too Few	0.5	Too Few	120	Too Few	
MCV	79.180	75.900	-1.01	Too Few	-4.1	Too Few	79	Too Few	
Mean Platelet Volume	4.775	4.380	-1.33	Too Few	-8.3	Too Few	59	Too Few	
Platelets (Optical Count)	403.772	390.000	-0.24	Too Few	-3.4	Too Few	120	Too Few	
RBC (Optical Count)	3.022	3.070	0.49	Too Few	1.6	Too Few	102	Too Few	
WBC (Optical Count)	18.655	18.700	0.06	Too Few	0.2	Too Few	120	Too Few	

ORMSDI N/A

ORM%DEV N/A

ORMTS N/A

END OF REPORT