

Laboratorio Emotest s.r.l.

MONTHLY HAEMATOLOGY

CYCLE 16 SAMPLE 2

Explanation of codes used in this report

R - Results removed due to reconstitution error
N - No result returned
C - Result corrected

Authorised by: Stephen Doherty, RIQAS Manager

Issue No: 1

Issue Date: 16/02/2023

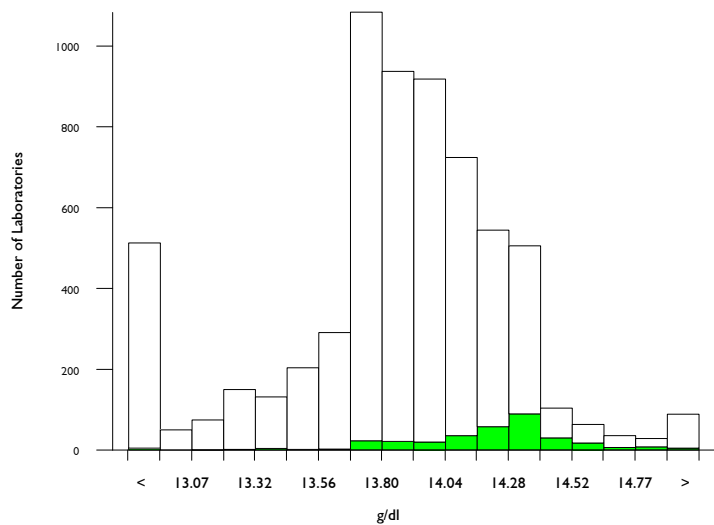
Randox Laboratories Limited
55 Diamond Road
CRUMLIN BT29 4QY
Tel: +44 (0)28 9445 4399
Fax: +44 (0)28 9445 4398
Email: mail@riqas.com

Haemoglobin, g/dl

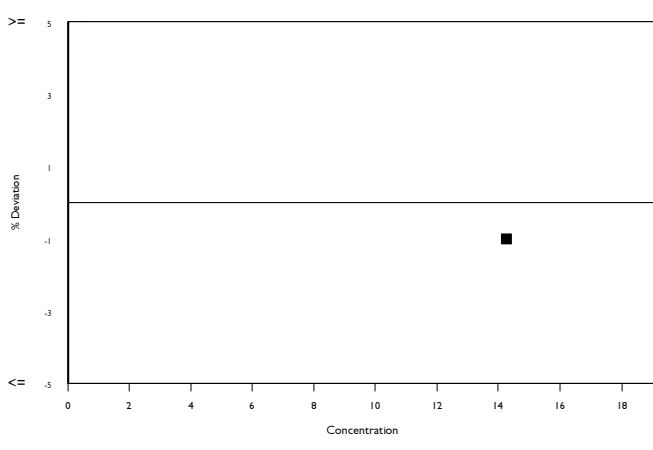
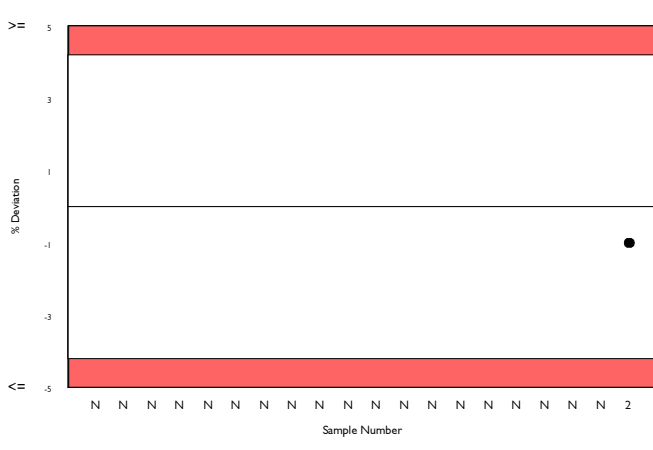
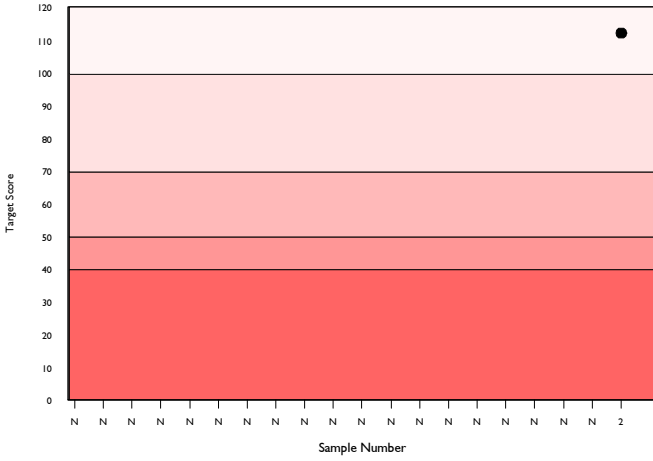
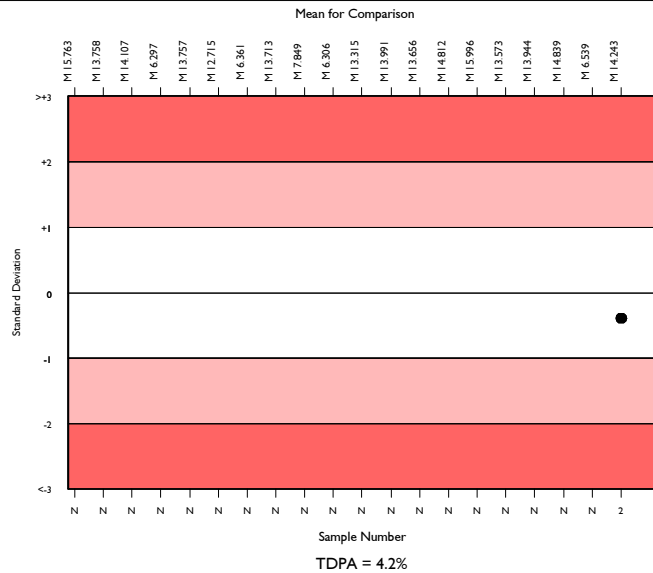
	N	Mean	CV%	U _m	SDPA	Exc.
All Methods	5891	13.925	2.3	0.01	0.36	554
Abbott Cell-Dyn Ruby	312	14.243	1.8	0.02	0.36	22

▲ Your Result	14.100	SDI	-0.39
		RMSDI	Too Few
■ Mean for Comparison	14.243	TS	112
		RMTS	Too Few
		%DEV	-1.0
		RM%DEV	Too Few

Acceptable limits derived from Biological Variation	N/A
Acceptable limits of performance for RIQAS	4.20%



Method	N	Mean	CV%	U _m
Sysmex XN Series	1397	14.019	1.0	0.00
Sysmex XN-L Series (330/350/450/550)	565	13.861	0.9	0.01
Mindray BC-6000/6200/6600/6800/6800Plus	311	14.089	1.1	0.01
Abbott Cell-Dyn Ruby	312	14.243	1.8	0.02
Beckman Coulter DxH 600/800/900 Series	272	13.663	1.0	0.01
Calculated from HCT	235	12.571	3.4	0.03
Siemens/Bayer Advia 120/2120	218	14.076	1.5	0.02
Sysmex XP Series	213	13.741	1.6	0.02
Sysmex XS series	193	13.950	1.1	0.01
Mindray BC 1000/2000/3000 series	168	13.893	2.8	0.04
Manual Methods	171	12.641	3.5	0.04
Sysmex XT series	141	13.974	1.0	0.02
Mindray BC 5100/5180/5300/5380/5390	130	13.927	1.8	0.03
Mindray BC 5000/5150/5140/5130/5120	114	13.872	1.6	0.03
Horiba Yumizen H500/ 550	94	13.778	1.3	0.02
Nihon Kohden Celltac Alpha	93	14.331	2.3	0.04
ABX Micros/Minos/ABC VET	95	13.847	2.7	0.05
Beckman Coulter DxH 500 Series	85	12.965	2.1	0.04
Horiba ABX Pentra 60/80/XLR	75	13.852	1.6	0.03
Sysmex KX 21	70	13.742	1.8	0.04
Mindray BC 10/20/30	67	14.056	1.9	0.04

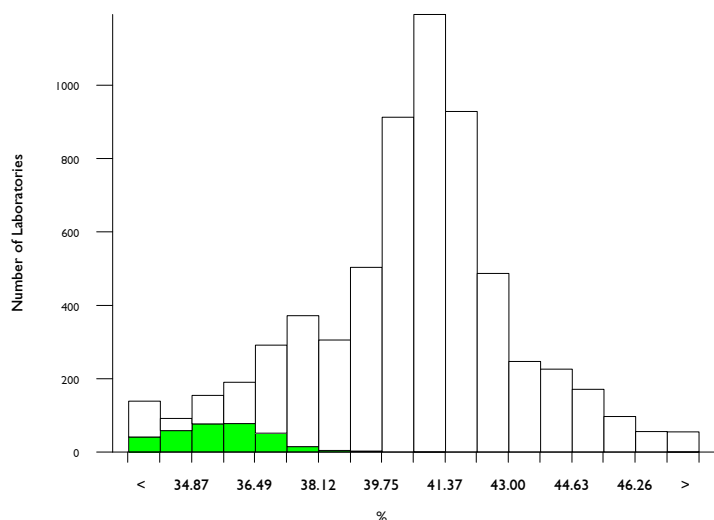


Haematocrit (HCT), %

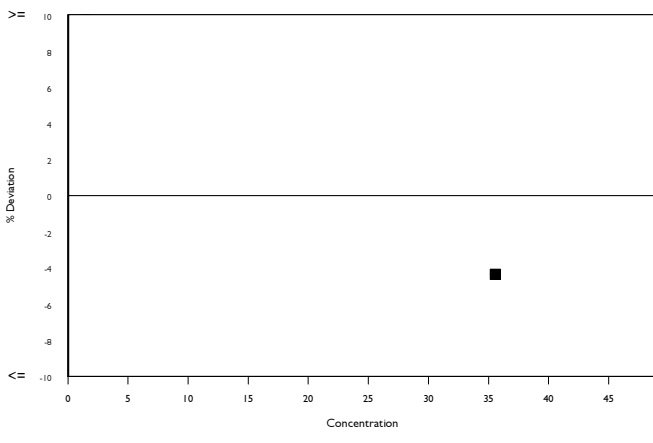
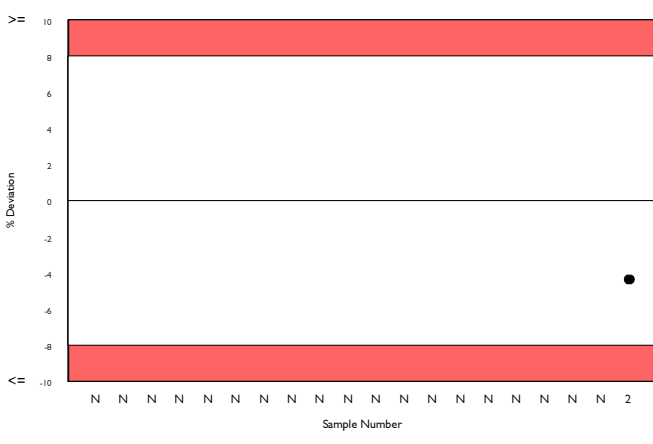
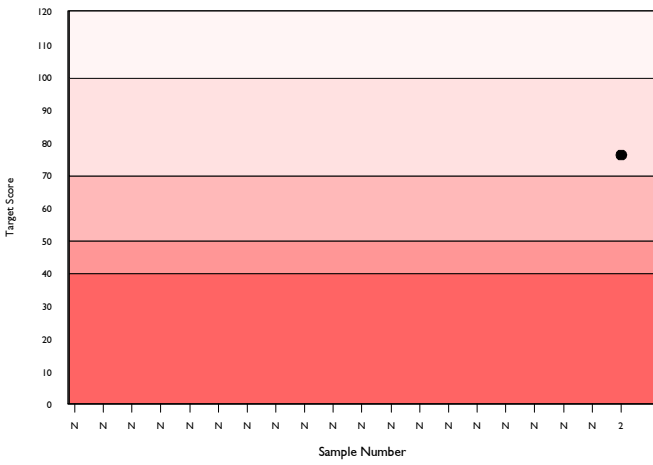
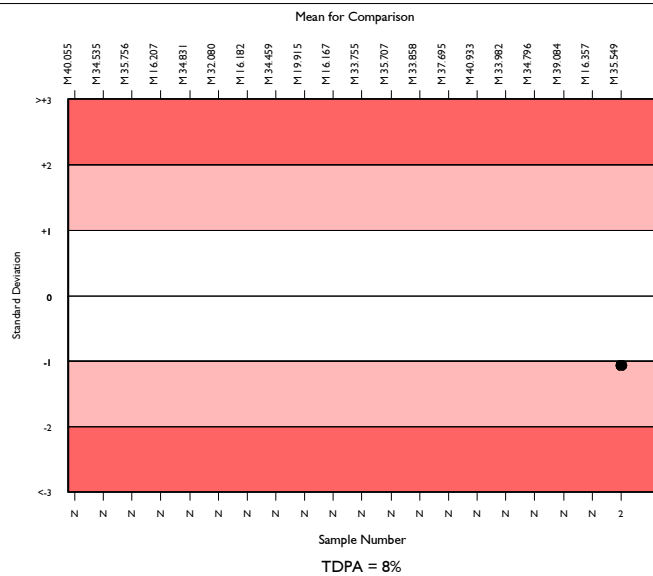
	N	Mean	CV%	U _m	SDPA	Exc.
All Methods	5950	40.566	5.3	0.04	1.66	464
Abbott Cell-Dyn Ruby	309	35.549	3.1	0.08	1.45	23

▲ Your Result	34.000	SDI	-1.07
		RMSDI	Too Few
■ Mean for Comparison	35.549	TS	76
		RMTS	Too Few
		%DEV	-4.4
		RM%DEV	Too Few

Acceptable limits derived from Biological Variation	N/A
Acceptable limits of performance for RIQAS	8.00%



Method	N	Mean	CV%	U _m
Sysmex XN Series	1408	40.885	1.9	0.03
Sysmex XN-L Series (330/350/450/550)	576	40.685	2.1	0.04
Mindray BC-6000/6200/6600/6800/6800Plus	312	44.825	1.9	0.06
Abbott Cell-Dyn Ruby	309	35.549	3.1	0.08
Microhematocrit Centrifugation	263	38.128	3.1	0.09
Beckman Coulter DxH 600/800/900 Series	277	41.477	1.4	0.04
Siemens/Bayer Advia 120/2120	218	36.312	2.7	0.08
Sysmex XP Series	202	38.224	2.4	0.08
Sysmex XS series	187	40.788	2.1	0.08
Manual Methods	169	37.964	2.7	0.10
Mindray BC 1000/2000/3000 series	165	41.916	3.1	0.13
Sysmex XT series	139	40.995	2.0	0.09
Mindray BC 5100/5180/5300/5380/5390	130	42.975	2.7	0.13
Mindray BC 5000/5150/5140/5130/5120	112	42.433	2.7	0.13
Horiba Yumizen H500/ 550	100	39.709	2.9	0.14
Nihon Kohden Celltac Alpha	89	42.027	2.9	0.16
ABX Micros/Minos/ABC VET	93	40.145	3.2	0.17
Beckman Coulter DxH 500 Series	86	41.223	2.4	0.13
Horiba ABX Pentra 60/80/XLR	70	38.778	1.8	0.10
Sysmex KX 21	65	38.313	2.7	0.16
Mindray BC 10/20/30	66	41.794	2.8	0.18

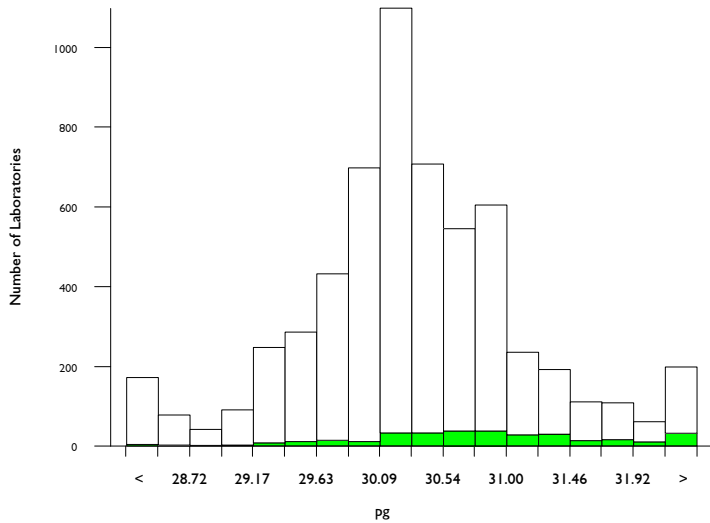


MCH, pg

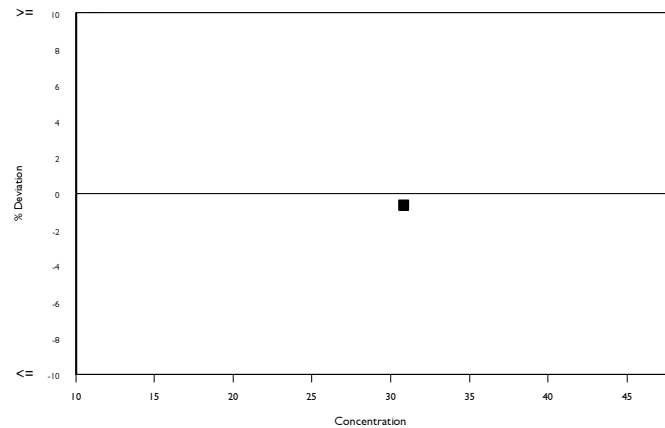
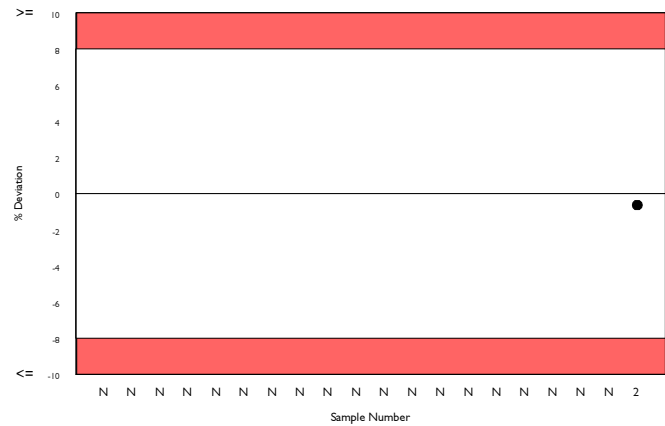
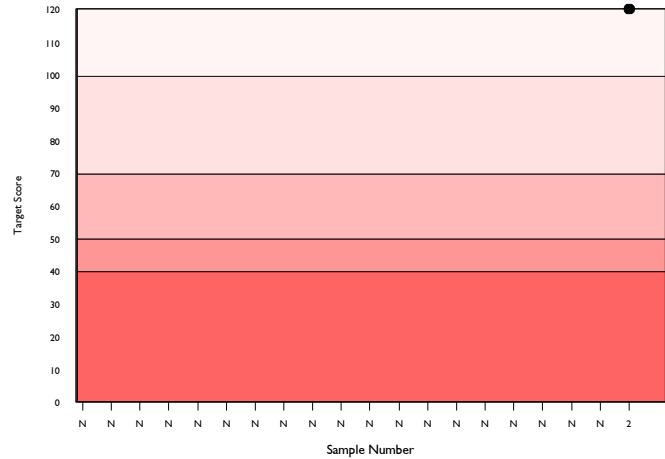
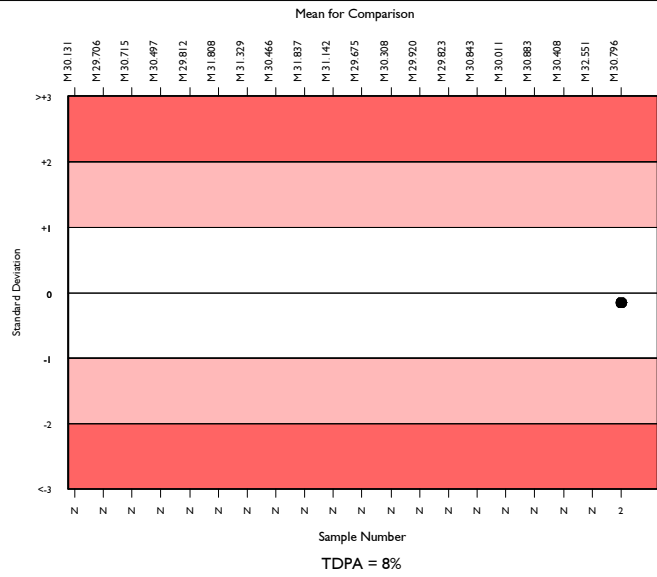
	N	Mean	CV%	U _m	SDPA	Exc.
All Methods	5417	30.321	2.0	0.01	1.24	487
Abbott Cell-Dyn Ruby	305	30.796	2.5	0.05	1.26	27

▲ Your Result	30.600	SDI	-0.16
		RMSDI	Too Few
■ Mean for Comparison	30.796	TS	120
		RMTS	Too Few
		%DEV	-0.6
		RM%DEV	Too Few

Acceptable limits derived from Biological Variation	N/A
Acceptable limits of performance for RIQAS	8.00%



Method	N	Mean	CV%	U _m
Sysmex XN Series	1402	30.274	1.3	0.01
Sysmex XN-L Series (330/350/450/550)	573	30.107	1.2	0.02
Mindray BC-6000/6200/6600/6800/6800Plus	312	30.375	1.5	0.03
Abbott Cell-Dyn Ruby	305	30.796	2.5	0.05
Beckman Coulter DxH 600/800/900 Series	274	30.182	1.3	0.03
Siemens/Bayer Advia 120/2120	214	30.989	2.0	0.05
Sysmex XP Series	210	30.248	1.9	0.05
Sysmex XS series	191	30.391	1.4	0.04
Mindray BC 1000/2000/3000 series	164	30.013	3.3	0.10
Sysmex XT series	134	30.152	1.4	0.05
Mindray BC 5100/5180/5300/5380/5390	130	30.450	2.0	0.07
Mindray BC 5000/5150/5140/5130/5120	109	30.409	2.0	0.07
Horiba Yumizen H500/ 550	93	30.086	1.9	0.07
Nihon Kohden Celltac Alpha	90	31.039	2.5	0.10
ABX Micros/Minos/ABC VET	89	30.357	2.9	0.12
Beckman Coulter DxH 500 Series	85	28.281	2.2	0.09
Horiba ABX Pentra 60/80/XLR	75	30.338	1.8	0.08
Sysmex KX 21	63	30.305	1.8	0.08
Mindray BC 10/20/30	67	30.921	2.9	0.14
Abbott Cell-Dyn Emerald 22	58	29.222	2.8	0.13
Abbott Alinity iq	61	31.407	2.2	0.11

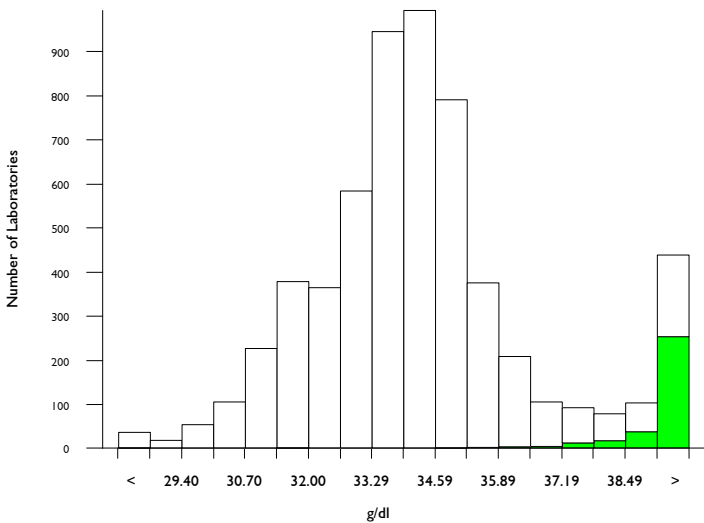


MCHC, g/dl

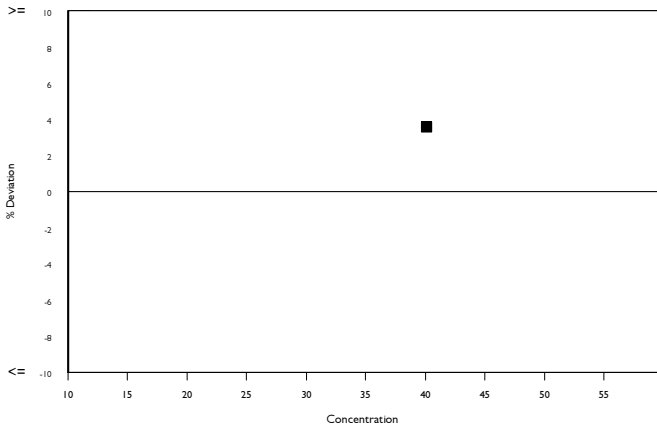
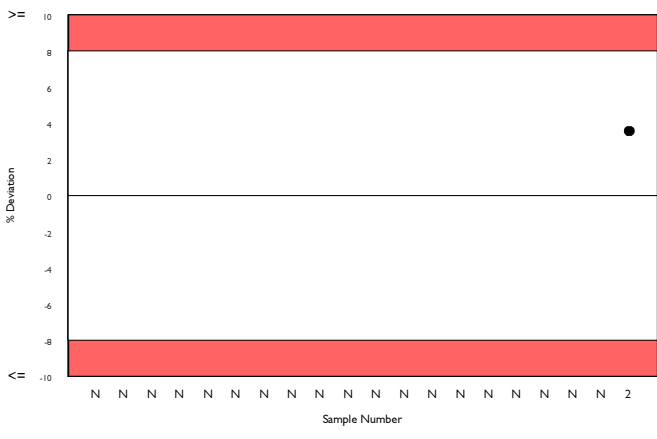
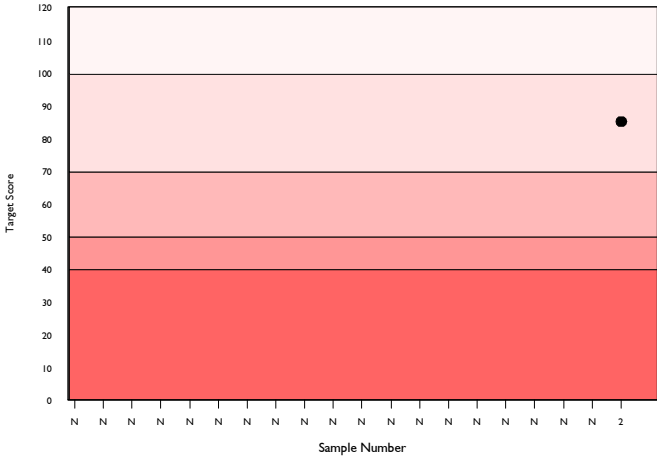
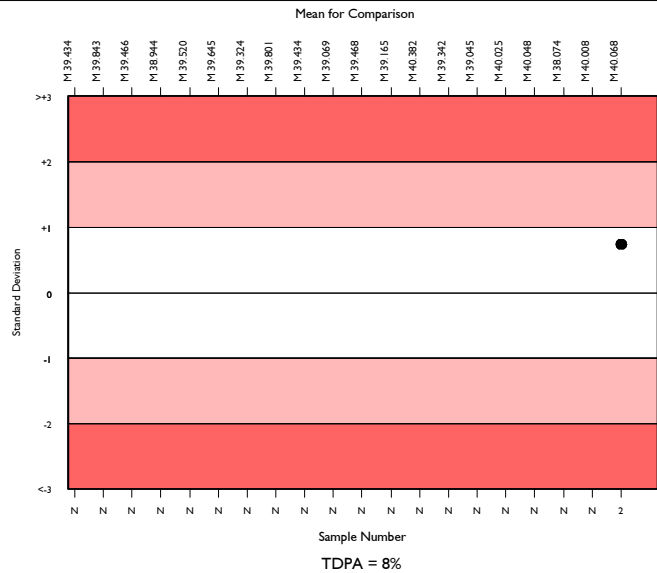
	N	Mean	CV%	U _m	SDPA	Exc.
All Methods	5394	33.949	5.1	0.03	1.65	497
Abbott Cell-Dyn Ruby	307	40.068	3.0	0.09	1.95	25

▲ Your Result	41.500	SDI	0.73
		RMSDI	Too Few
■ Mean for Comparison	40.068	TS	85
		RMTS	Too Few
		%DEV	3.6
		RM%DEV	Too Few

Acceptable limits derived from Biological Variation	N/A
Acceptable limits of performance for RIQAS	8.00%



Method	N	Mean	CV%	U _m
Sysmex XN Series	1398	34.307	1.9	0.02
Sysmex XN-L Series (330/350/450/550)	574	34.064	1.9	0.03
Mindray BC-6000/6200/6600/6800/6800Plus	312	31.381	1.8	0.04
Abbott Cell-Dyn Ruby	307	40.068	3.0	0.09
Beckman Coulter DxH 600/800/900 Series	275	32.933	1.6	0.04
Siemens/Bayer Advia 120/2120	219	38.848	2.8	0.09
Sysmex XP Series	207	35.939	2.7	0.08
Sysmex XS series	190	34.224	2.1	0.07
Mindray BC 1000/2000/3000 series	162	33.038	3.5	0.12
Sysmex XT series	140	34.104	2.3	0.08
Mindray BC 5100/5180/5300/5380/5390	129	32.497	2.9	0.10
Mindray BC 5000/5150/5140/5130/5120	112	32.627	2.4	0.09
Horiba Yumizen H500/ 550	94	34.799	2.7	0.12
Nihon Kohden Celltac Alpha	88	34.103	3.4	0.15
ABX Micros/Minos/ABC VET	85	34.243	3.2	0.15
Beckman Coulter DxH 500 Series	84	31.474	2.5	0.11
Horiba ABX Pentra 60/80/XLR	71	35.706	1.9	0.10
Sysmex KX 21	67	35.630	3.4	0.19
Mindray BC 10/20/30	66	33.542	2.8	0.14
Abbott Cell-Dyn Emerald 22	61	32.939	2.7	0.14
Erba Lachema Elite series	42	32.014	3.3	0.21



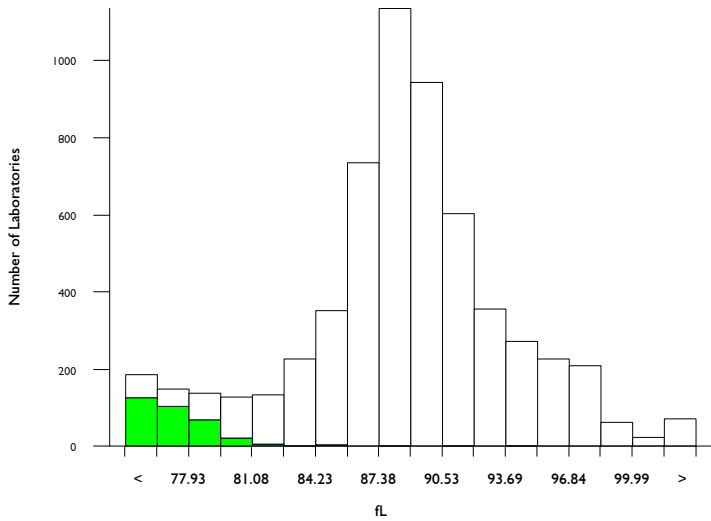
MCV, fL

- All Methods
- Abbott Cell-Dyn Ruby

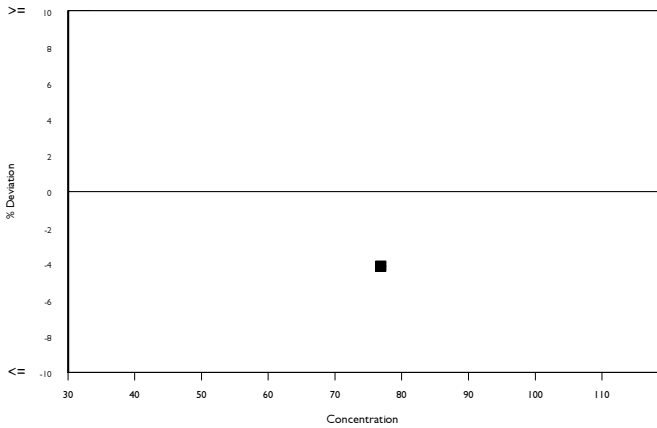
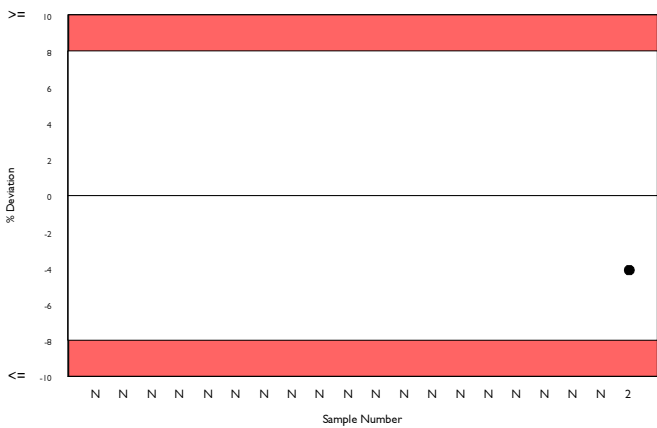
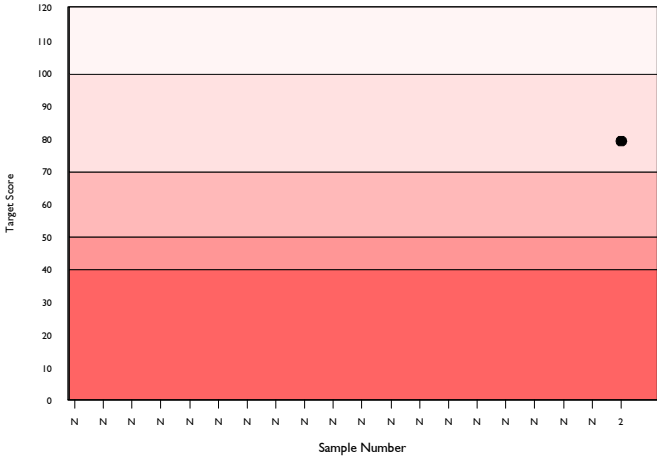
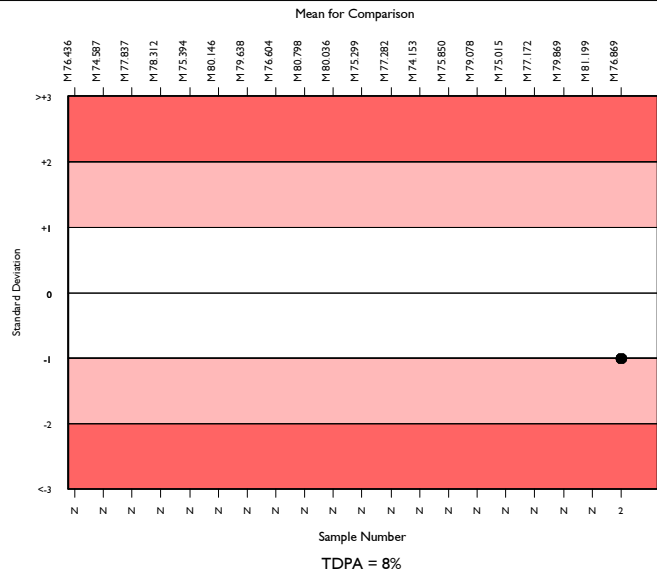
	N	Mean	CV%	U _m	SDPA	Exc.
All Methods	5492	88.964	4.7	0.07	3.63	446
Abbott Cell-Dyn Ruby	308	76.869	2.4	0.13	3.14	24

▲ Your Result	73.700	SDI	-1.01
		RMSDI	Too Few
■ Mean for Comparison	76.869	TS	79
		RMTS	Too Few
		%DEV	-4.1
		RM%DEV	Too Few

Acceptable limits derived from Biological Variation	N/A
Acceptable limits of performance for RIQAS	8.00%



Method	N	Mean	CV%	U _m
Sysmex XN Series	1384	88.231	1.6	0.05
Sysmex XN-L Series (330/350/450/550)	577	88.404	1.6	0.07
Mindray BC-6000/6200/6600/6800/6800Plus	312	96.903	1.3	0.09
Abbott Cell-Dyn Ruby	308	76.869	2.4	0.13
Beckman Coulter DxH 600/800/900 Series	276	91.593	1.0	0.07
Siemens/Bayer Advia 120/2120	221	80.015	2.3	0.16
Sysmex XP Series	201	83.971	1.8	0.13
Sysmex XS series	185	88.677	1.7	0.14
Mindray BC1000/2000/3000 series	164	90.734	2.7	0.24
Sysmex XT series	134	88.685	1.4	0.13
Mindray BC 5100/5180/5300/5380/5390	130	93.801	2.4	0.25
Mindray BC 5000/5150/5140/5130/5120	105	93.335	1.4	0.16
Horiba Yumizen H500/ 550	94	86.226	2.0	0.22
Nihon Kohden Celltac Alpha	92	90.917	3.3	0.39
ABX Micros/Minos/ABC VET	88	87.859	2.6	0.31
Beckman Coulter DxH 500 Series	87	89.798	1.5	0.18
Horiba ABX Pentra 60/80/XLR	69	84.888	1.6	0.20
Sysmex KX 21	61	84.370	2.1	0.28
Mindray BC 10/20/30	62	92.240	1.5	0.22
Abbott Cell-Dyn Emerald 22	56	88.182	1.7	0.25
Erba Lachema Elite series	44	93.870	3.0	0.52

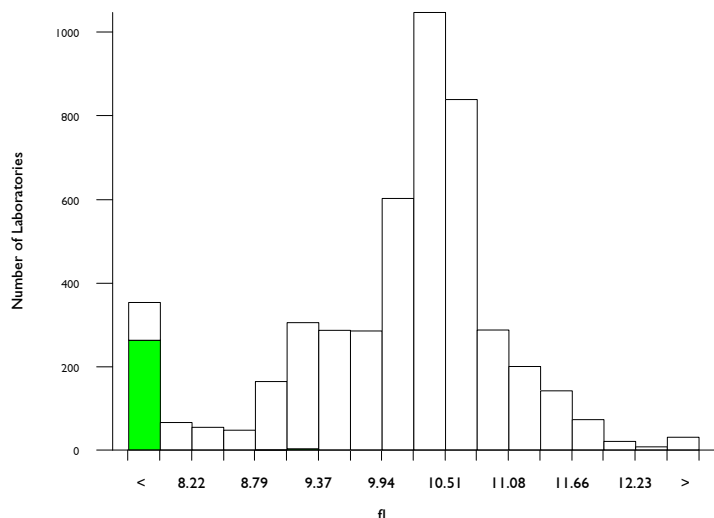


Mean Platelet Volume, fL

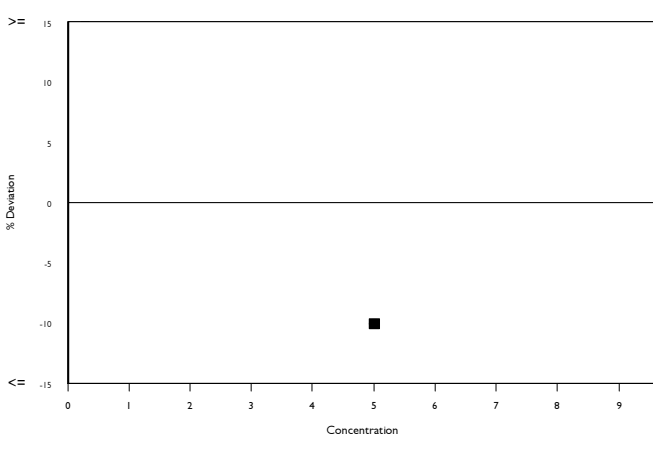
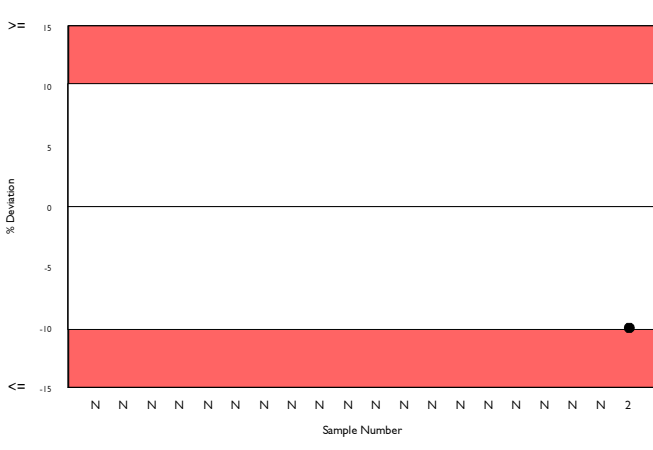
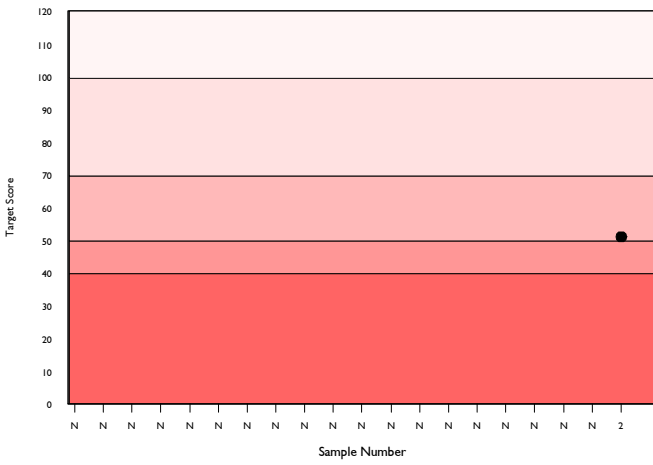
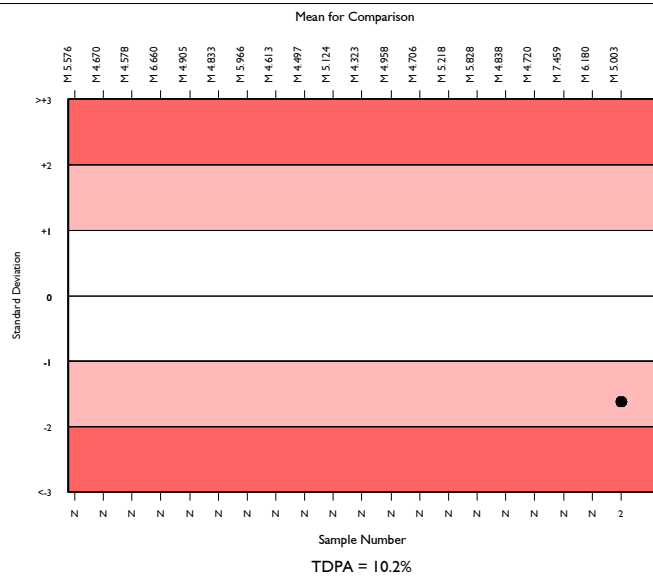
	N	Mean	CV%	U _m	SDPA	Exc.
All Methods	4441	10.231	7.5	0.01	0.63	370
Abbott Cell-Dyn Ruby	238	5.003	6.5	0.03	0.31	30

▲ Your Result	4.500	SDI	-1.62
		RMSDI	Too Few
■ Mean for Comparison	5.003	TS	51
		RMTS	Too Few
		%DEV	-10.1
		RM%DEV	Too Few

Acceptable limits derived from Biological Variation	N/A
Acceptable limits of performance for RIQAS	10.20%



Method	N	Mean	CV%	U _m
Siemens XN Series	1166	10.490	2.3	0.01
Siemens XN-L Series (330/350/450/550)	381	10.470	2.1	0.01
Mindray BC-6000/6200/6600/6800/6800Plus	280	11.286	3.4	0.03
Abbott Cell-Dyn Ruby	238	5.003	6.5	0.03
Beckman Coulter DxH 600/800/900 Series	227	9.237	2.3	0.02
Siemens XP Series	159	10.194	2.3	0.02
Siemens/Bayer Advia 120/2120	158	10.682	5.4	0.06
Mindray BC 1000/2000/3000 series	152	9.690	6.1	0.06
Siemens XS series	151	10.666	2.8	0.03
Siemens XT series	120	10.345	2.3	0.03
Mindray BC 5000/5150/5140/5130/5120	101	10.865	3.1	0.04
Mindray BC 5100/5180/5300/5380	83	9.753	2.5	0.03
Horiba Yumizen H500/ 550	87	11.043	3.9	0.06
Nihon Kohden Celltac Alpha	80	9.041	6.8	0.09
Beckman Coulter DxH 500 Series	74	9.607	3.5	0.05
Horiba ABX Pentra 60/80/XLR	62	10.129	3.7	0.06
Mindray BC 10/20/30	59	10.564	2.5	0.04
ABX Micros/Minos/ABC VET	60	8.935	5.5	0.08
Siemens KX 21	53	10.180	3.1	0.05
Abbott Cell-Dyn Emerald 22	42	10.214	3.3	0.07
Erba Lachema Elite series	39	10.159	4.9	0.10

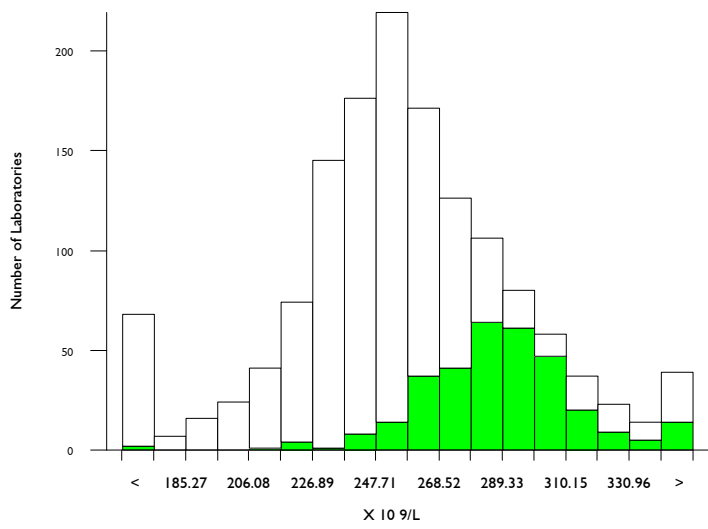


Platelets (Optical Count), X 10⁹/L

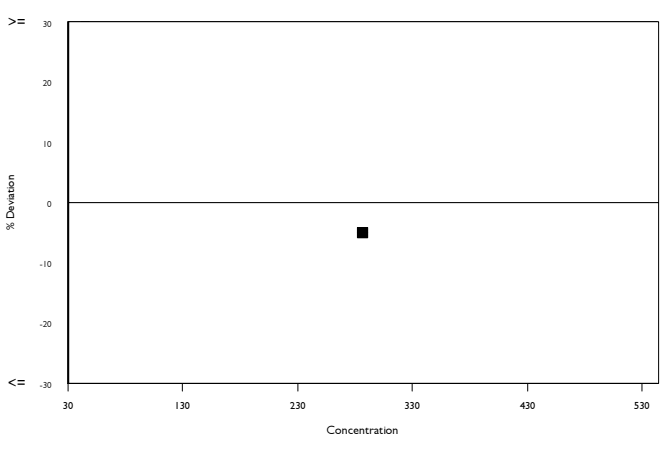
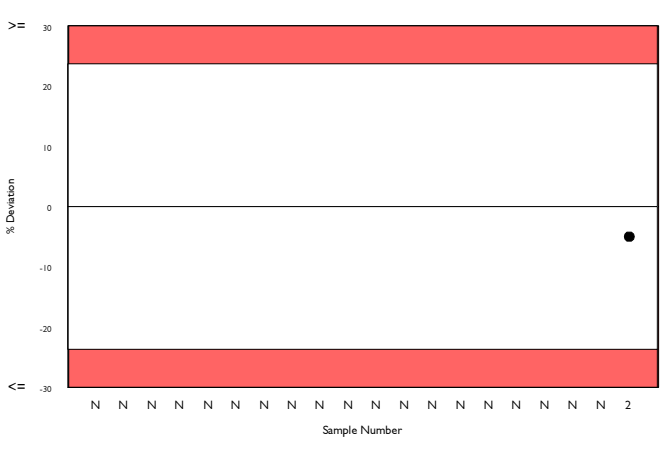
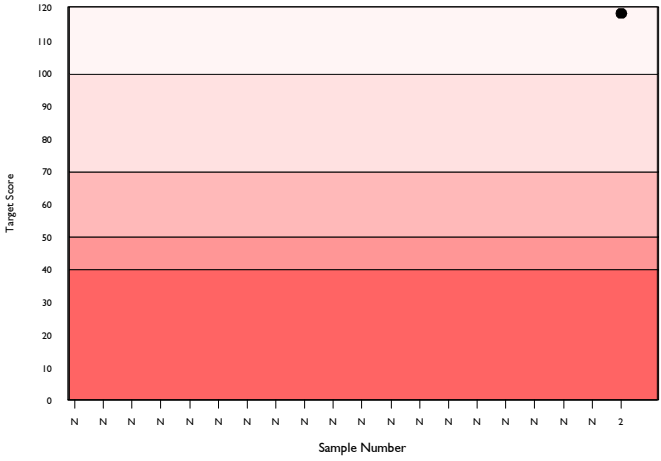
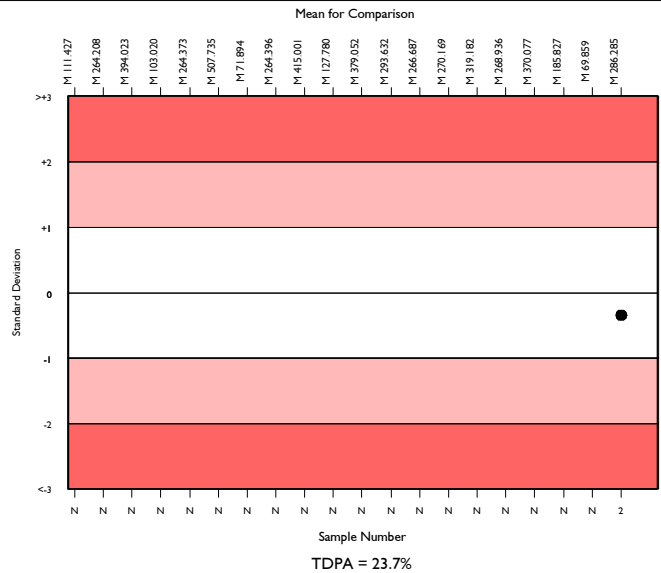
	N	Mean	CV%	U _m	SDPA	Exc.
All Methods	1285	258.118	10.8	0.97	37.19	139
Abbott Cell-Dyn Ruby	303	286.285	6.8	1.40	41.25	25

▲ Your Result	272.000	SDI	-0.35
		RMSDI	Too Few
■ Mean for Comparison	286.285	TS	118
		RMTS	Too Few
		%DEV	-5.0
		RM%DEV	Too Few

Acceptable limits derived from Biological Variation	N/A
Acceptable limits of performance for RIQAS	23.70%



Method	N	Mean	CV%	U _m
Manual Methods	329	240.493	10.0	1.66
Abbott Cell-Dyn Ruby	303	286.285	6.8	1.40
Siemens/Bayer Advia 120/2120	215	236.625	6.1	1.23
Sysmex XN Series PLT-O	104	284.250	12.4	4.33
Abbott Alinity hq	57	256.947	4.6	1.97
Mindray BC-6000/6200/6600/6800/6800Plus	47	259.702	4.6	2.19
Sysmex XN-L Series (330/350/450/550)	44	256.148	4.9	2.38
Sysmex XS Series	27	250.963	3.8	2.31
Sysmex XT Series	24	252.271	5.5	3.56
Horiba Yumizen H500/ 550	11	271.214	1.9	1.92
Abbott Cell-Dyn 3200	10	255.000	12.5	12.62
Sysmex XN Series PLT-F	12	252.667	5.4	4.93
Abbott Cell-Dyn Sapphire	11	274.545	5.5	5.66
Beckman Coulter DxH 600/800/900 Series	10	256.786	4.5	4.59
Sysmex KX21	8	263.750	4.3	5.02
Horiba ABX Pentra 60/80/XLR	8	248.750	6.3	6.97
UDIHEM-D	8	257.125	9.4	10.68
Beckman Coulter DxH 500 Series	7	264.871	6.6	8.31
ABX Micros/Minos/ABC VET	6	230.000	4.3	5.07
Horiba Yumizen H1500/ 2500	6	265.500	4.7	6.35
IDEXX ProCyte Dx Haematology Analyser	4	290.750	16.5	29.91

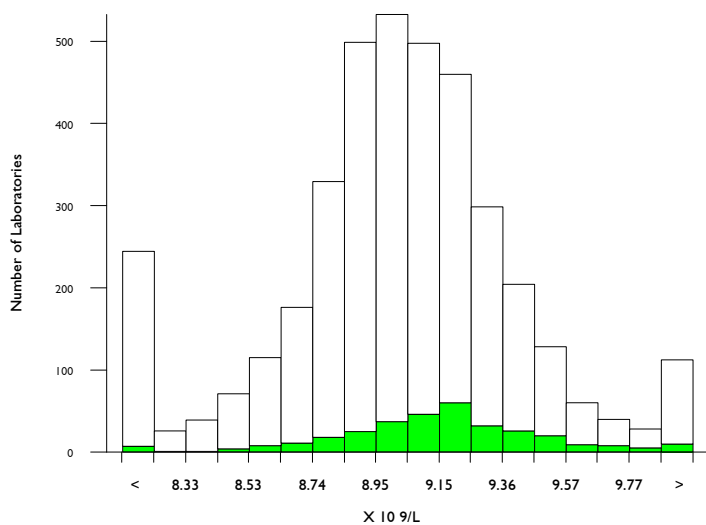


WBC (Optical Count), X 10⁹/L

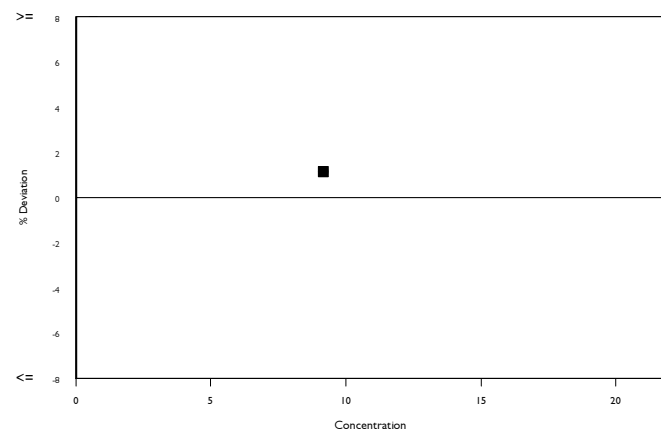
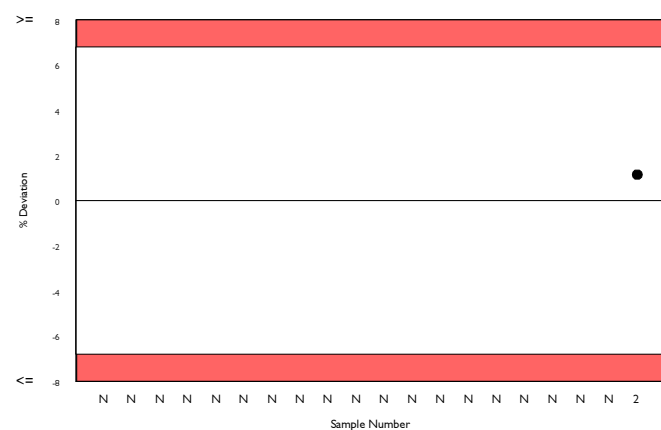
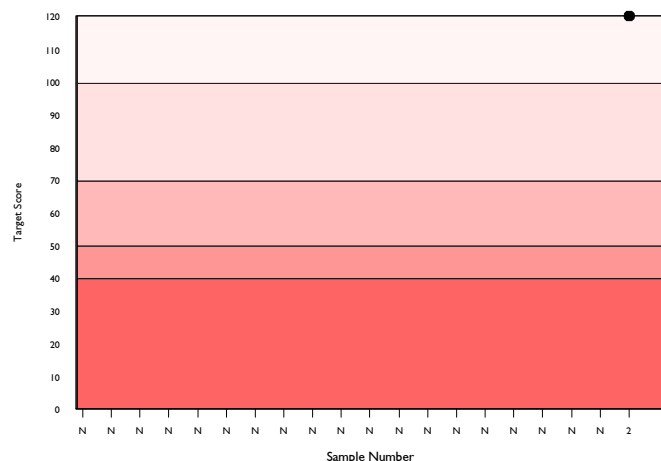
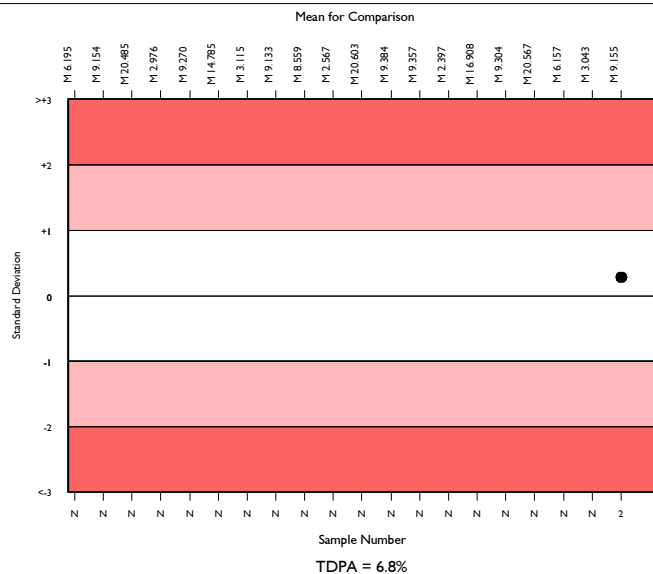
	N	Mean	CV%	U _m	SDPA	Exc.
All Methods	3485	9.055	3.0	0.01	0.37	372
Abbott Cell-Dyn Ruby	298	9.155	2.7	0.02	0.38	30

▲ Your Result	9.260	SDI	0.28
		RMSDI	Too Few
■ Mean for Comparison	9.155	TS	120
		RMTS	Too Few
		%DEV	1.1
		RM%DEV	Too Few

Acceptable limits derived from Biological Variation	N/A
Acceptable limits of performance for RIQAS	6.80%



Method	N	Mean	CV%	U _m
Sysmex XN Series	1301	9.024	2.1	0.01
Manual methods	384	9.009	6.9	0.04
Sysmex XN-L Series (330/350/450/550)	348	9.265	1.9	0.01
Abbott Cell-Dyn Ruby	298	9.155	2.7	0.02
Mindray BC-6000/6200/6600/6800/6800Plus	296	8.899	2.1	0.01
Siemens/Bayer Advia 120/2120	217	8.772	3.6	0.03
Sysmex XS Series	184	9.317	2.6	0.02
Sysmex XT Series	131	9.155	2.6	0.03
Mindray BC 5000/5150/5140/5130/5120	98	9.036	2.5	0.03
Abbott Alinity hq	59	8.920	2.9	0.04
Mindray BC 5600/5800	40	9.235	4.5	0.08
Beckman Coulter DxH 600/800/900 Series	22	8.961	2.3	0.05
Horiba Yumizen H500/ 550	17	8.493	2.4	0.06
Abbott Cell-Dyn 3200	13	9.080	3.4	0.11
Sysmex KX21	13	8.938	3.7	0.12
Abbott Cell-Dyn Sapphire	10	9.072	3.0	0.11
Beckman Coulter DxH 500 Series	11	9.078	1.6	0.05
Horiba ABX Pentra 60/80/XLR	8	9.005	2.6	0.10
UDIHEM-D	6	8.915	3.9	0.18
Shenzhen Dymind DF50	7	9.336	3.5	0.15
Mindray BC 5200/5500	5	8.922	3.5	0.18



Analyte	Mean for Comparison	Your Result	SDI	RMSDI	%DEV	RM%DEV	TS	RMTS	Performance
Haemoglobin	14.243	14.100	-0.39	Too Few	-1.0	Too Few	112	Too Few	
Haematocrit (HCT)	35.549	34.000	-1.07	Too Few	-4.4	Too Few	76	Too Few	
MCH	30.796	30.600	-0.16	Too Few	-0.6	Too Few	120	Too Few	
MCHC	40.068	41.500	0.73	Too Few	3.6	Too Few	85	Too Few	
MCV	76.869	73.700	-1.01	Too Few	-4.1	Too Few	79	Too Few	
Mean Platelet Volume	5.003	4.500	-1.62	Too Few	-10.1	Too Few	51	Too Few	
Platelets (Optical Count)	286.285	272.000	-0.35	Too Few	-5.0	Too Few	118	Too Few	
RBC (Optical Count)	4.625	4.610	-0.10	Too Few	-0.3	Too Few	120	Too Few	
WBC (Optical Count)	9.155	9.260	0.28	Too Few	1.1	Too Few	120	Too Few	

ORMSDI N/A

ORM%DEV N/A

ORMTS N/A

END OF REPORT