

Laboratorio Emotest s.r.l.

# COAGULATION

CYCLE 15 SAMPLE 9

## Explanation of codes used in this report

R - Results removed due to reconstitution error  
N - No result returned  
C - Result corrected

Authorised by: Sally Picton, RIQAS Manager

Issue No: 1

Issue Date: 20/09/2023

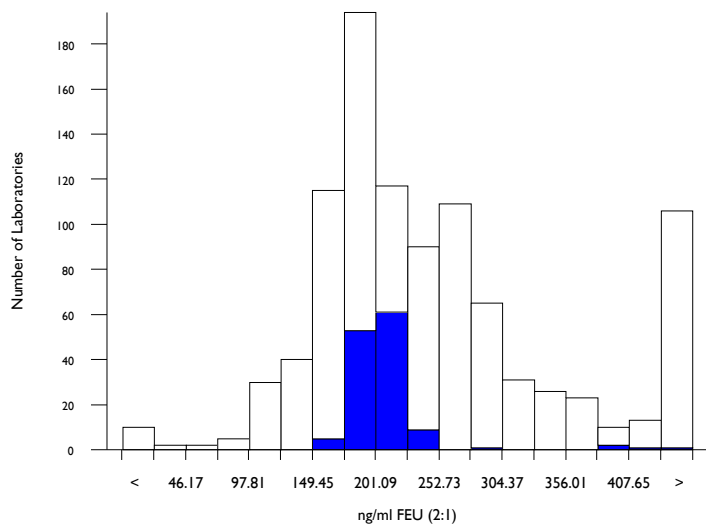
Randox Laboratories Limited  
55 Diamond Road  
CRUMLIN BT29 4QY  
Tel: +44 (0)28 9445 4399  
Fax: +44 (0)28 9445 4398  
Email: mail@riqas.com

# D-Dimer (Pilot), ng/ml FEU (2:1)

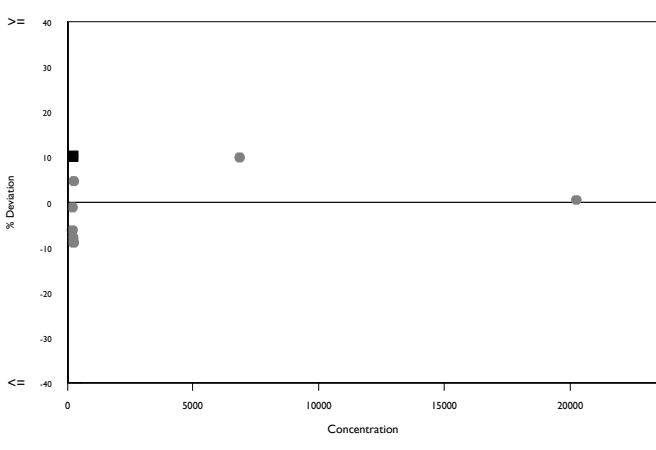
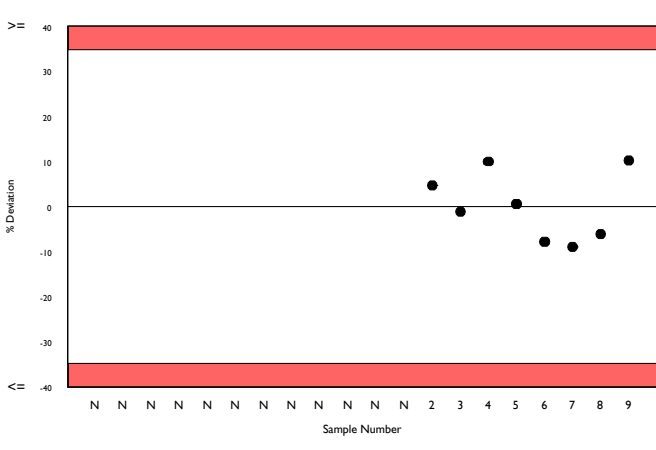
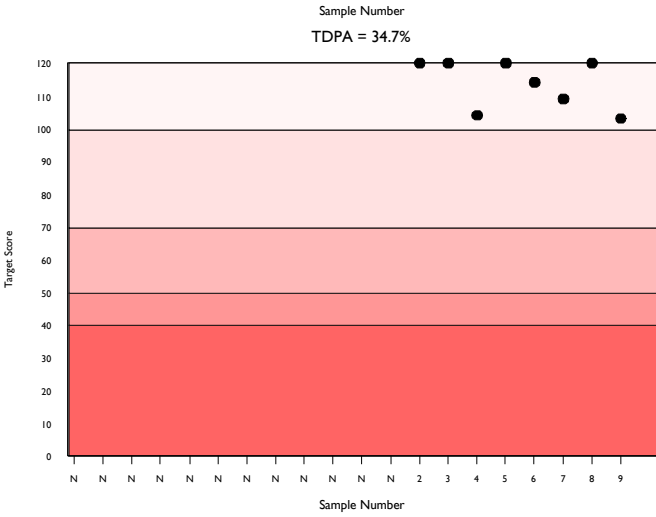
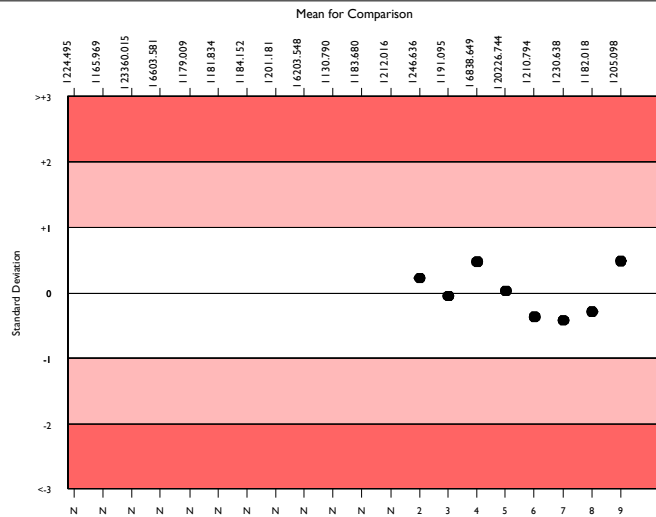
|                                    | N   | Mean    | CV%  | U <sub>m</sub> | SDPA  | Exc. |
|------------------------------------|-----|---------|------|----------------|-------|------|
| All Methods                        | 860 | 226.915 | 30.3 | 2.93           | 47.87 | 284  |
| Biomerieux VIDAS Exclusion II      | 120 | 205.098 | 6.7  | 1.58           | 43.27 | 13   |
| Biomerieux Vidas/miniVidas/Vidas 3 | 120 | 205.098 | 6.7  | 1.58           | 43.27 | 13   |

|                       |         |        |         |
|-----------------------|---------|--------|---------|
| ▲ Your Result         | 226.000 | SDI    | 0.48    |
|                       |         | RMSDI  | Too Few |
| ■ Mean for Comparison | 205.098 | TS     | 103     |
|                       |         | RMTS   | Too Few |
|                       |         | %DEV   | 10.2    |
|                       |         | RM%DEV | Too Few |

|   |        |
|---|--------|
| Acceptable limits derived from Biological Variation | N/A    |
| Acceptable limits of performance for RIQAS          | 34.70% |



| Method                                   | N   | Mean    | CV%  | U <sub>m</sub> |
|--|-----|---------|------|----------------|
| Siemens Innovance D-Dimer                | 192 | 169.699 | 11.8 | 1.81           |
| HemosIL D-Dimer HS 500                   | 158 | 257.882 | 17.2 | 4.42           |
| Stago Sta Liatest D-DI/Plus              | 118 | 256.008 | 11.9 | 3.50           |
| Biomerieux VIDAS Exclusion II            | 120 | 205.098 | 6.7  | 1.58           |
| HemosIL D-Dimer                          | 57  | 518.863 | 16.9 | 14.48          |
| HemosIL D-Dimer HS                       | 45  | 258.233 | 18.0 | 8.67           |
| Roche Cobas D-DI 2                       | 25  | 206.320 | 26.0 | 13.40          |
| Roche Cobas D-DI2 citrated plasma        | 15  | 199.400 | 11.2 | 7.18           |
| Abbott Architect/Alinity Quantia D-Dimer | 13  | 441.782 | 12.4 | 18.97          |
| HemosIL D-Dimer 500                      | 11  | 250.909 | 28.0 | 26.51          |
| ImproGen D-Dimer                         | 11  | 230.127 | 28.5 | 24.70          |
| Diagon D-Dimer                           | 7   | 118.571 | 14.4 | 8.07           |
| Finicare D-Dimer                         | 6   | 115.000 | 13.2 | 7.74           |
| Kinetic Latex Turbidimetry D-Dimer       | 7   | 702.857 | 3.0  | 10.10          |
| Roche Cobas t511/t711 D-DI2              | 2   | 175.000 | 20.2 | 31.25          |
| Roche Cobas h232 D-Dimer                 | 4   | 200.000 | 0.0  | 0.00           |
| Siemens D-Dimer Plus                     | 5   | 379.600 | 7.6  | 16.21          |
| Siemens Immulite 2000 D-Dimer            | 8   | 194.250 | 19.4 | 16.67          |
| Roche Integra D-DI 2                     | 5   | 240.400 | 26.0 | 34.92          |
| SNIBE Maglumi analyser                   | 6   | 322.000 | 8.0  | 13.15          |
| Mindray D-Dimer                          | 5   | 440.400 | 29.5 | 72.64          |

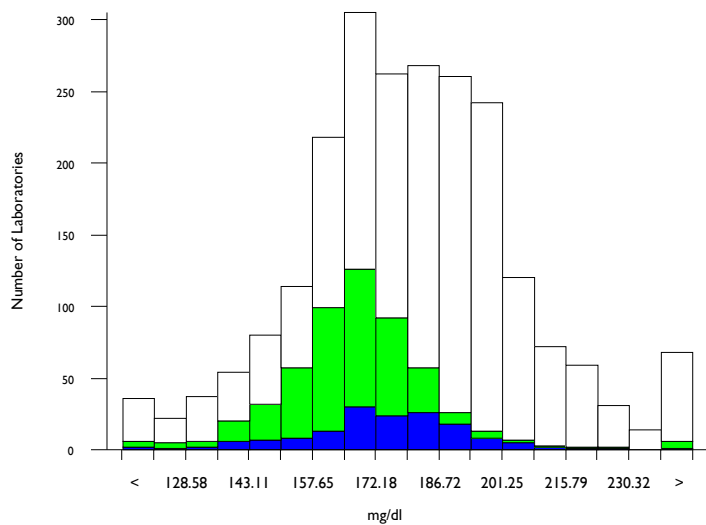


# Fibrinogen, mg/dl

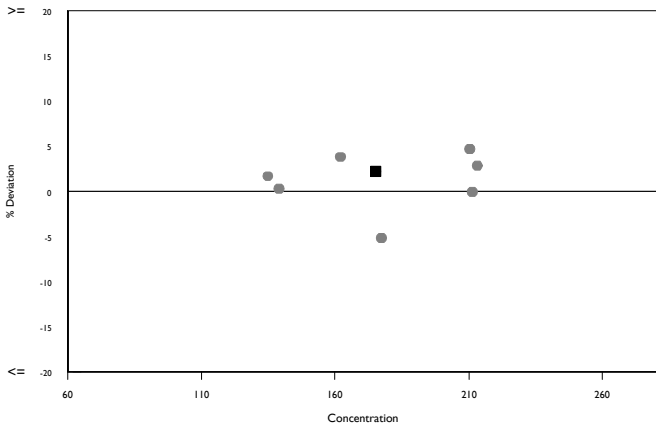
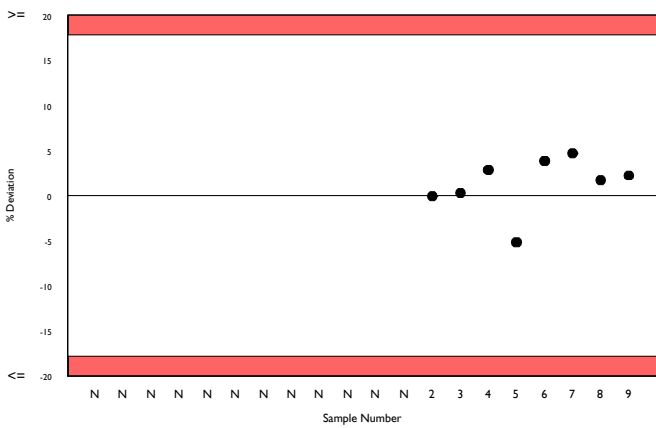
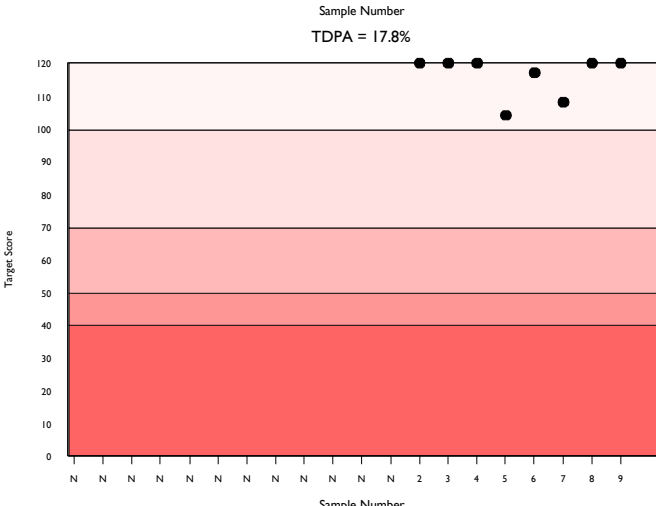
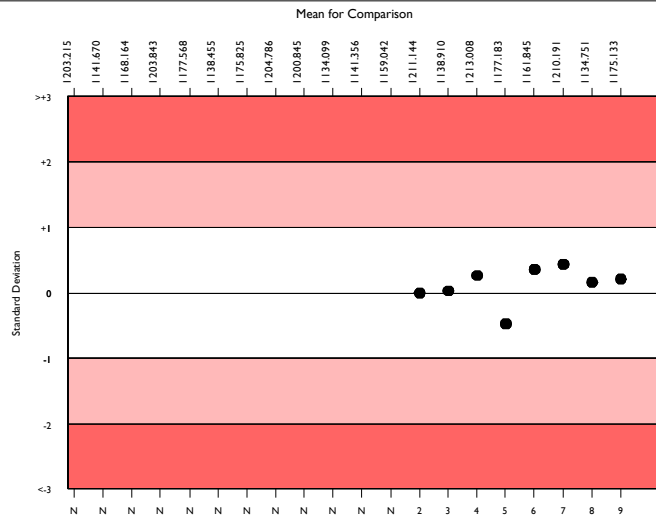
|                          | N    | Mean    | CV%  | U <sub>m</sub> | SDPA  | Exc. |
|--------------------------|------|---------|------|----------------|-------|------|
| All Methods              | 2084 | 179.455 | 10.8 | 0.53           | 19.42 | 179  |
| Siemens/Dade Thrombin    | 515  | 167.641 | 7.4  | 0.68           | 18.14 | 45   |
| Sysmex CA 500/600 series | 139  | 175.133 | 7.9  | 1.45           | 18.95 | 16   |

|                       |         |        |         |
|-----------------------|---------|--------|---------|
| ▲ Your Result         | 179.000 | SDI    | 0.20    |
|                       |         | RMSDI  | Too Few |
| ■ Mean for Comparison | 175.133 | TS     | 120     |
|                       |         | RMTS   | Too Few |
|                       |         | %DEV   | 2.2     |
|                       |         | RM%DEV | Too Few |

|   |        |
|---|--------|
| Acceptable limits derived from Biological Variation | N/A    |
| Acceptable limits of performance for RIQAS          | 17.80% |



| Method                           | N   | Mean    | CV%  | U <sub>m</sub> |
|----------------------------------|-----|---------|------|----------------|
| Siemens/Dade Thrombin            | 515 | 167.641 | 7.4  | 0.68           |
| Stago Fibrinogen/ Liquid-Fib     | 391 | 194.980 | 5.3  | 0.65           |
| HemosL QFA (bovine thrombin)     | 259 | 176.181 | 10.4 | 1.42           |
| HemosL Fibrinogen C              | 223 | 183.045 | 8.7  | 1.33           |
| Siemens/Dade Multifibren U       | 206 | 177.266 | 8.5  | 1.31           |
| Sclavo Fibrinogen                | 34  | 192.406 | 8.5  | 3.48           |
| HemosL RecombiPlasTin 2G         | 31  | 138.210 | 12.1 | 3.76           |
| Diagon Dia-FIB                   | 28  | 143.175 | 9.5  | 3.19           |
| Biolabo Bio-Fibri                | 24  | 193.458 | 9.7  | 4.79           |
| HemosL PT-Fibrinogen HS Plus     | 24  | 184.788 | 13.6 | 6.42           |
| Human Fibrinogen                 | 21  | 199.626 | 8.9  | 4.85           |
| Mindray/Longisland Fibrinogen    | 24  | 182.417 | 8.7  | 4.05           |
| Roche Cobas t511/t711 Fibrinogen | 22  | 203.227 | 5.5  | 2.95           |
| Helena Clauss Fibrinogen 100     | 18  | 187.450 | 10.4 | 5.73           |
| Labitec Fibrinogen               | 13  | 171.200 | 7.8  | 4.64           |
| Technoclone Fibrinogen           | 13  | 228.308 | 10.9 | 8.62           |
| Bio-Ksel Fibrinogen              | 12  | 204.750 | 3.8  | 2.77           |
| Roche Cobas t411 Fibrinogen      | 13  | 187.923 | 5.9  | 3.82           |
| Stago STA Fibrin-Prest Automate  | 11  | 198.909 | 6.5  | 4.86           |
| Yumizen G Fibrinogen             | 10  | 165.300 | 8.6  | 5.60           |
| Cobas Fibrinogen                 | 12  | 187.583 | 4.8  | 3.25           |

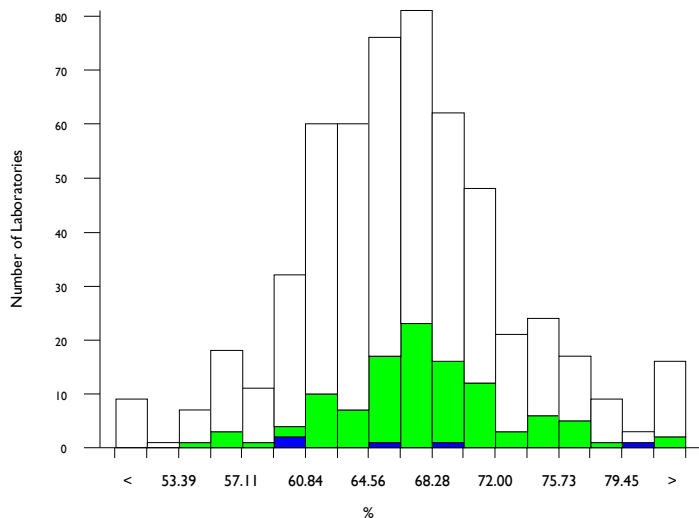


# Antithrombin III activity, %

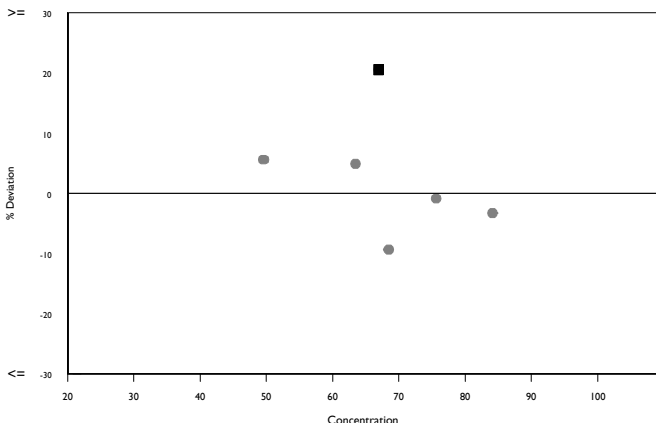
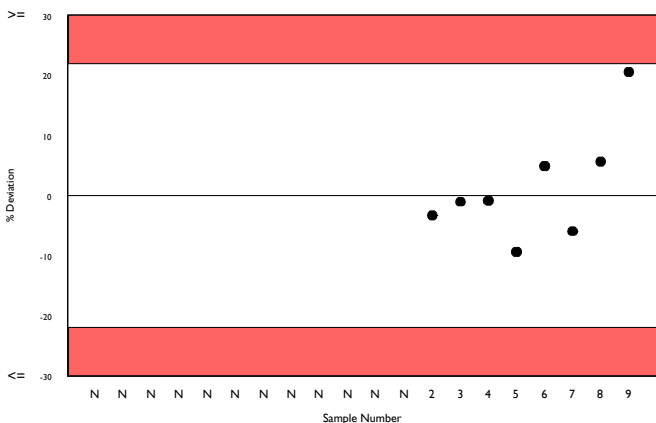
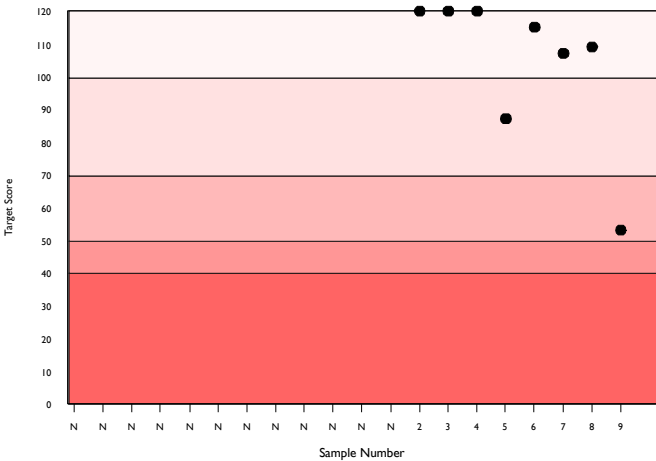
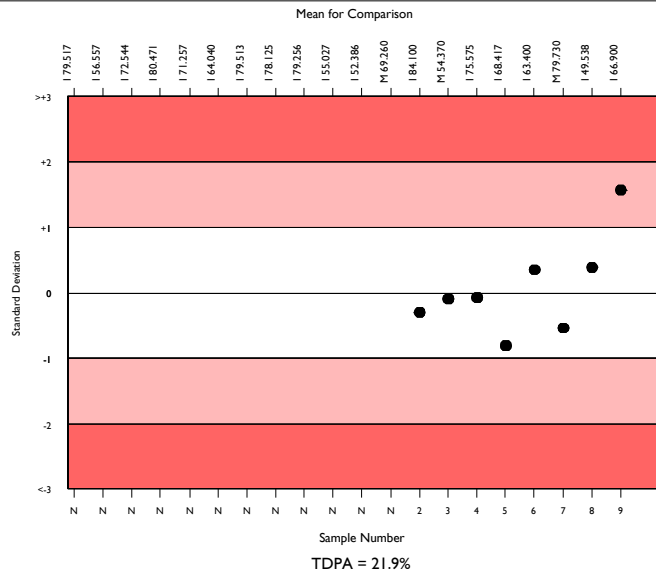
|                              | N   | Mean   | CV%  | U <sub>m</sub> | SDPA  | Exc. |
|------------------------------|-----|--------|------|----------------|-------|------|
| All Methods                  | 516 | 66.426 | 7.5  | 0.27           | 7.27  | 39   |
| Siemens/Dade Berichrom ATIII | 104 | 67.640 | 6.2  | 0.52           | 7.41  | 8    |
| Sysmex CA 500/600 series     | 5   | 66.900 | 12.8 | 4.80           | 8.76a | 0    |

|                       |        |        |         |
|-----------------------|--------|--------|---------|
| ▲ Your Result         | 80.600 | SDI    | 1.56    |
|                       |        | RMSDI  | Too Few |
| ■ Mean for Comparison | 66.900 | TS     | 53      |
|                       |        | RMTS   | Too Few |
|                       |        | %DEV   | 20.5    |
|                       |        | RM%DEV | Too Few |

|   |        |
|---|--------|
| Acceptable limits derived from Biological Variation | N/A    |
| Acceptable limits of performance for RIQAS          | 21.90% |



| Method                                  | N   | Mean   | CV%  | U <sub>m</sub> |
|---|-----|--------|------|----------------|
| HemosL Liquid Antithrombin              | 168 | 63.459 | 6.1  | 0.37           |
| Siemens/Dade Berichrom ATIII            | 104 | 67.640 | 6.2  | 0.52           |
| Siemens Innovance Antithrombin III      | 84  | 68.309 | 5.0  | 0.47           |
| STACHrom ATIII                          | 74  | 71.132 | 7.1  | 0.74           |
| Sclavo ATIII                            | 20  | 64.760 | 5.7  | 1.04           |
| Siemens/Dade Antithrombin III           | 14  | 67.857 | 14.3 | 3.24           |
| Roche Chromogenic Thrombin              | 11  | 67.036 | 4.4  | 1.12           |
| Roche Antithrombin                      | 9   | 69.556 | 8.2  | 2.37           |
| HaemoDiagnostics Antithrombin III (Fxa) | 5   | 65.714 | 10.5 | 3.85           |
| Tehnologia Standart Antithrombin III    | 5   | 71.380 | 17.7 | 7.05           |
| Chromogenix Substrate                   | 4   | 57.575 | 12.9 | 4.65           |
| HemosL Lyophilised Antithrombin         | 3   | 59.667 | 8.6  | 3.70           |
| Helena Chrom-Z                          | 2   | 62.850 | 1.0  | 0.56           |
| Biodevice ATIII                         | 2   | 63.950 | 16.7 | 9.44           |
| Diagon ATIII                            | 2   | 70.000 | 0.0  | 0.00           |
| Renam ATIII                             | 2   | 64.200 | 2.6  | 1.50           |

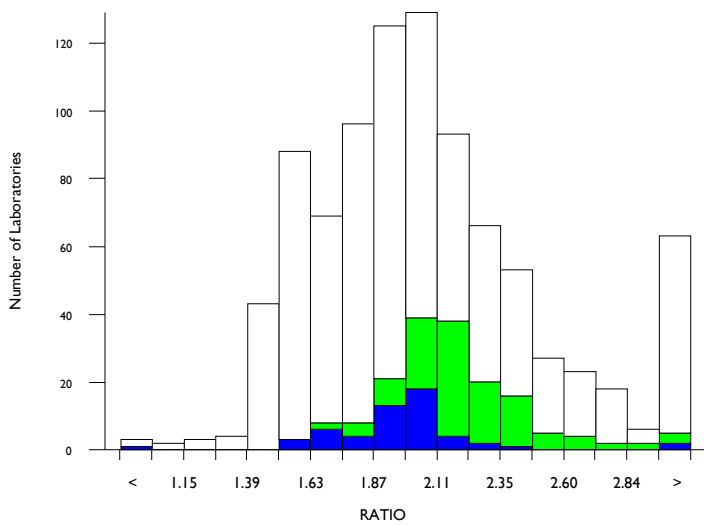


# aPTT as a ratio, RATIO

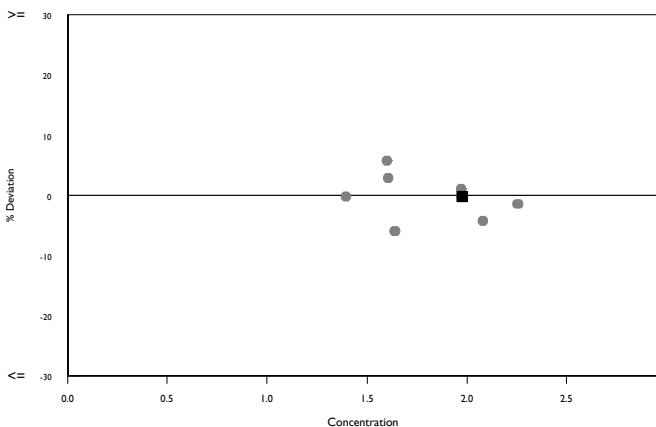
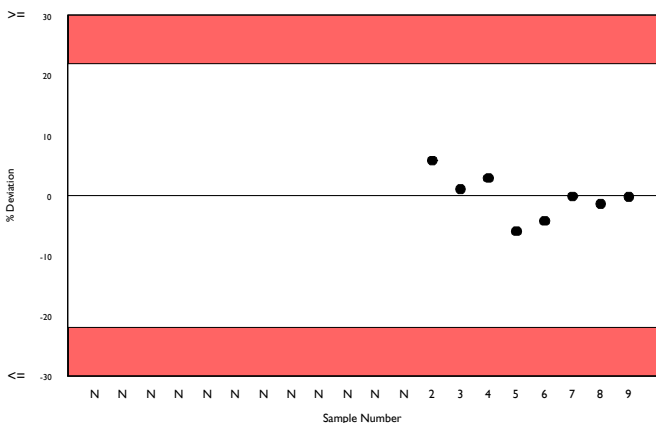
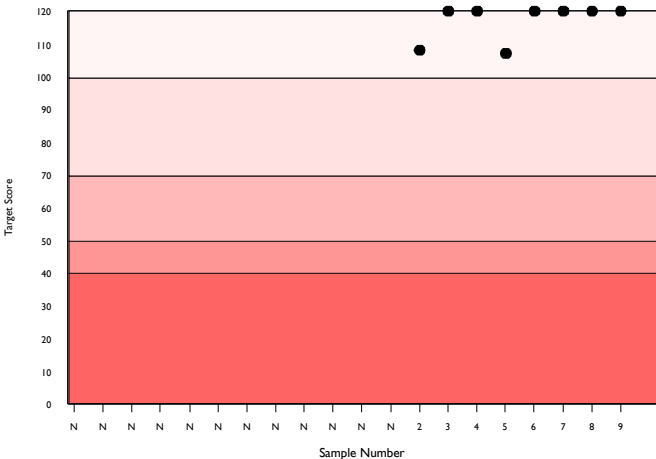
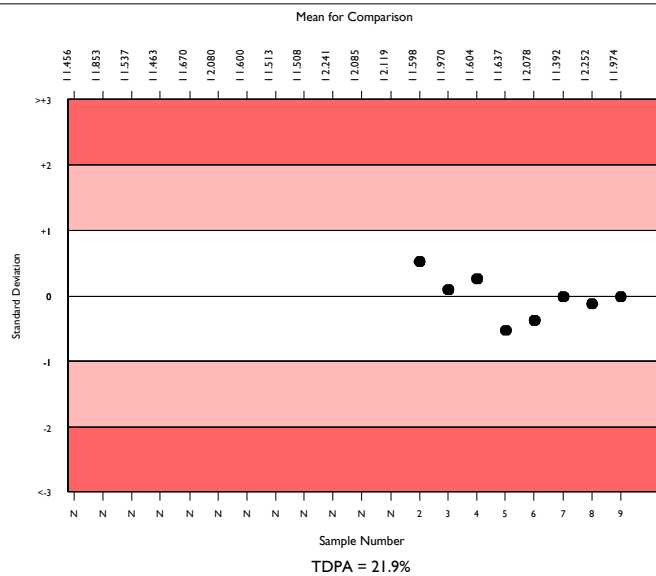
|                          | N   | Mean  | CV%  | U <sub>m</sub> | SDPA | Exc. |
|--------------------------|-----|-------|------|----------------|------|------|
| All Methods              | 831 | 1.998 | 16.1 | 0.01           | 0.22 | 83   |
| Siemens/Dade Actin FS    | 155 | 2.122 | 9.3  | 0.02           | 0.24 | 17   |
| Sysmex CA 500/600 series | 48  | 1.974 | 8.3  | 0.03           | 0.22 | 6    |

|                       |       |        |         |
|-----------------------|-------|--------|---------|
| ▲ Your Result         | 1.970 | SDI    | -0.02   |
|                       |       | RMSDI  | Too Few |
| ■ Mean for Comparison | 1.974 | TS     | 120     |
|                       |       | RMTS   | Too Few |
|                       |       | %DEV   | -0.2    |
|                       |       | RM%DEV | Too Few |

|   |        |
|---|--------|
| Acceptable limits derived from Biological Variation | N/A    |
| Acceptable limits of performance for RIQAS          | 21.90% |



| Method                     | N   | Mean  | CV%  | U <sub>m</sub> |
|----------------------------|-----|-------|------|----------------|
| Siemens/Dade Actin FS      | 155 | 2.122 | 9.3  | 0.02           |
| HemosIL Synthasil          | 146 | 2.190 | 13.3 | 0.03           |
| HemosIL APTT-SP liquid     | 88  | 1.559 | 5.2  | 0.01           |
| Siemens/Dade Actin FSL     | 90  | 1.803 | 7.8  | 0.02           |
| Stago CK Prest             | 61  | 2.003 | 5.6  | 0.02           |
| Siemens/Dade Pathromtin SL | 54  | 3.086 | 15.9 | 0.08           |
| Stago PTT Automate         | 46  | 1.873 | 8.7  | 0.03           |
| Scilavo APTT-S             | 22  | 2.589 | 14.7 | 0.10           |
| Stago Cephascreen          | 20  | 1.914 | 8.5  | 0.05           |
| Stago aPTT                 | 14  | 1.949 | 6.1  | 0.04           |
| Helena aPTT Si L Minus     | 13  | 2.353 | 12.6 | 0.10           |
| Human Hemostat APTT        | 12  | 1.907 | 4.7  | 0.03           |
| Labitec aPTT               | 12  | 1.897 | 13.3 | 0.09           |
| Biolabo Bio-CK APTT        | 11  | 2.022 | 7.0  | 0.05           |
| Erba Actime APTT           | 11  | 1.991 | 24.7 | 0.19           |
| Bio-Ksel System APTTs      | 9   | 1.541 | 8.3  | 0.05           |
| MTI Diagnostics APTT       | 6   | 1.952 | 4.2  | 0.04           |
| Tcoag TriniCLOT aPTT S     | 7   | 2.434 | 9.7  | 0.11           |
| Diagon Dia-PTT Lyophilised | 5   | 1.866 | 13.5 | 0.14           |
| Media IVD aPTT             | 4   | 1.822 | 22.8 | 0.26           |
| Roche Cobas APTT           | 4   | 2.770 | 20.5 | 0.36           |

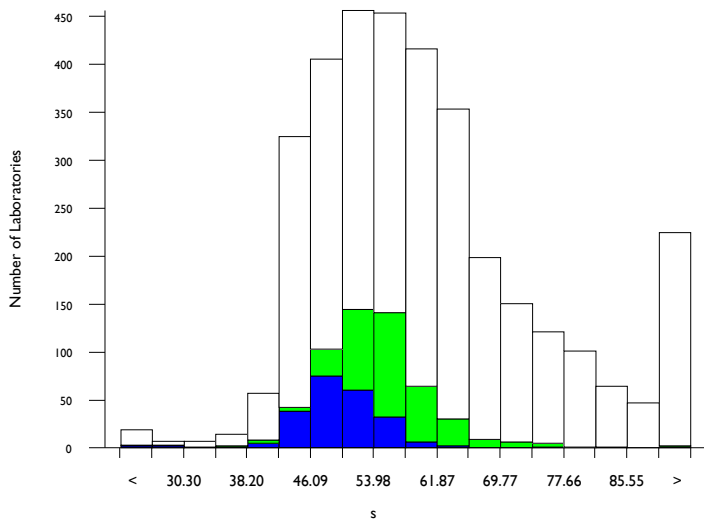


# aPTT in seconds, s

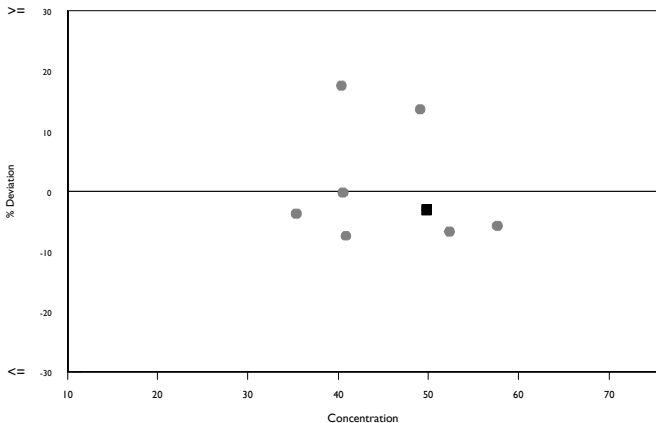
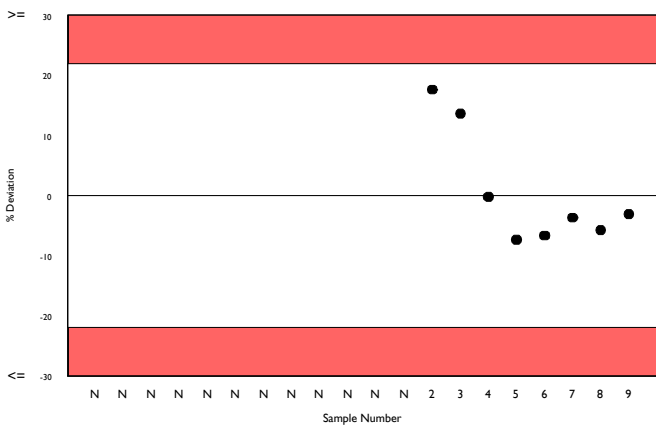
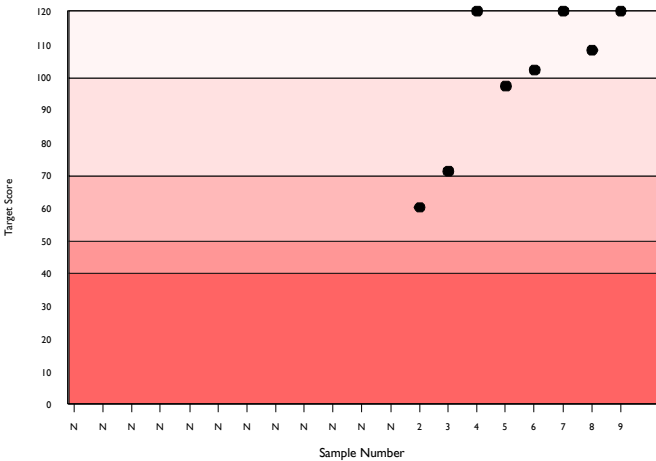
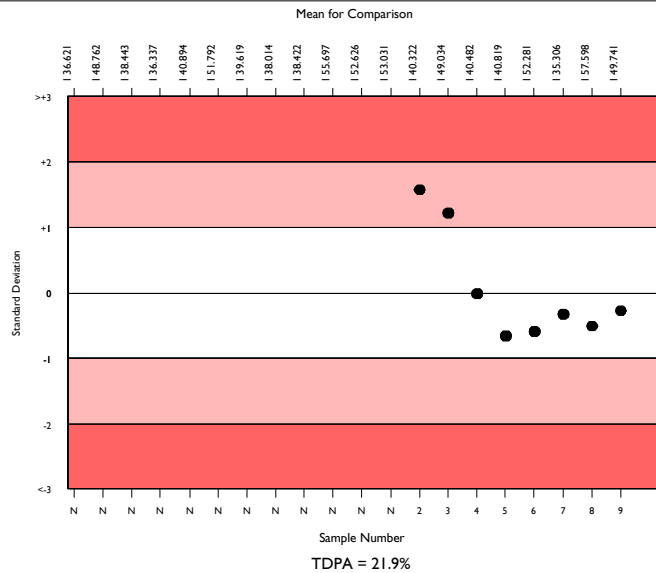
|                          | N    | Mean   | CV%  | U <sub>m</sub> | SDPA | Exc. |
|--------------------------|------|--------|------|----------------|------|------|
| All Methods              | 3137 | 57.932 | 18.2 | 0.23           | 6.47 | 289  |
| Siemens/Dade Actin FS    | 524  | 53.344 | 9.5  | 0.28           | 5.96 | 41   |
| Sysmex CA 500/600 series | 209  | 49.741 | 7.5  | 0.32           | 5.56 | 16   |

|                       |        |        |         |
|-----------------------|--------|--------|---------|
| ▲ Your Result         | 48.200 | SDI    | -0.28   |
|                       |        | RMSDI  | Too Few |
| ■ Mean for Comparison | 49.741 | TS     | 120     |
|                       |        | RMTS   | Too Few |
|                       |        | %DEV   | -3.1    |
|                       |        | RM%DEV | Too Few |

|   |        |
|---|--------|
| Acceptable limits derived from Biological Variation | N/A    |
| Acceptable limits of performance for RIQAS          | 21.90% |



| Method                     | N   | Mean   | CV%  | U <sub>m</sub> |
|----------------------------|-----|--------|------|----------------|
| Siemens/Dade Actin FS      | 524 | 53.344 | 9.5  | 0.28           |
| Stago CK Prest             | 384 | 60.695 | 7.8  | 0.30           |
| HemosIL Synthasil          | 390 | 66.067 | 16.4 | 0.68           |
| Siemens/Dade Actin FSL     | 331 | 48.435 | 7.0  | 0.23           |
| Siemens/Dade Pathromtin SL | 283 | 93.741 | 16.4 | 1.14           |
| HemosIL APTT-SP liquid     | 263 | 45.404 | 5.7  | 0.20           |
| Stago PTT Automate         | 158 | 62.015 | 6.3  | 0.39           |
| Stago aPTT                 | 90  | 61.377 | 7.5  | 0.61           |
| Stago Cephascreen          | 79  | 60.446 | 7.3  | 0.62           |
| Human Hemostat APTT        | 46  | 55.102 | 11.0 | 1.12           |
| Sclavo APTT-S              | 37  | 74.216 | 11.4 | 1.73           |
| Helena aPTT Si L Minus     | 30  | 68.153 | 13.6 | 2.11           |
| Biolabo Bio-CK APTT        | 32  | 55.281 | 11.2 | 1.37           |
| Diagon Dia-PTT Liquid      | 26  | 56.038 | 7.2  | 0.99           |
| Mindray/Longisland APTT    | 28  | 49.887 | 12.0 | 1.41           |
| Roche Cobas APTT           | 28  | 71.786 | 14.7 | 2.49           |
| Beijing Succeder aPTT      | 25  | 56.998 | 7.8  | 1.12           |
| Cobas aPTT MedS            | 26  | 82.163 | 8.2  | 1.65           |
| Siemens/Dade Actin         | 25  | 50.962 | 8.0  | 1.02           |
| Labitec aPTT               | 25  | 58.648 | 13.6 | 2.00           |
| Bio-Ksel System APTTs      | 21  | 51.476 | 9.1  | 1.28           |

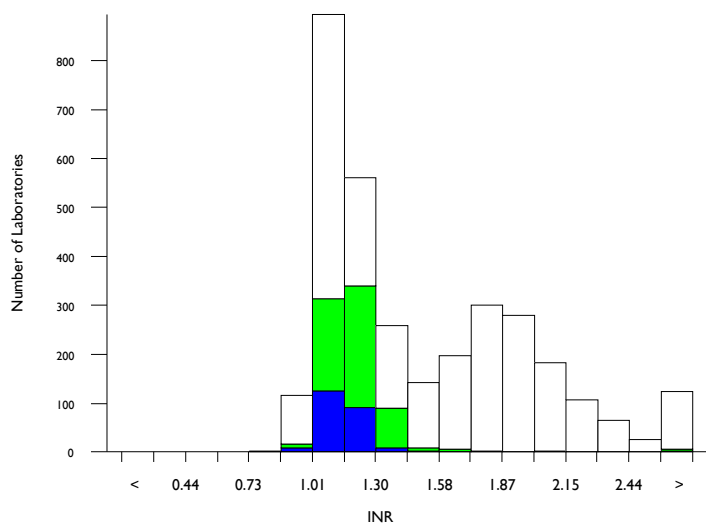


# PT as an INR, INR

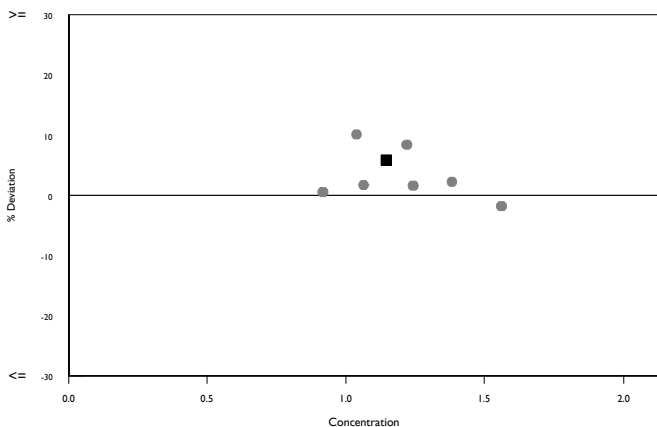
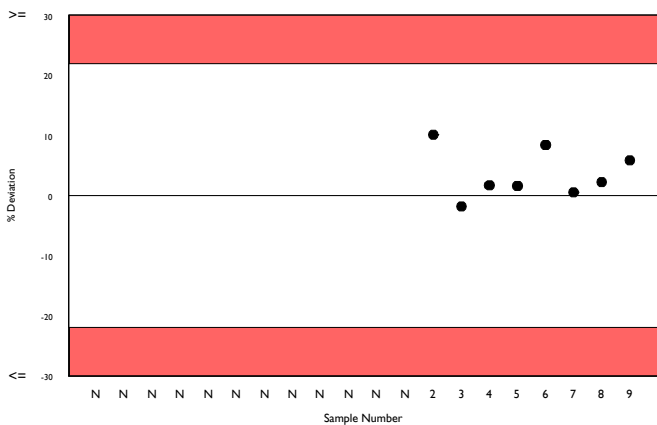
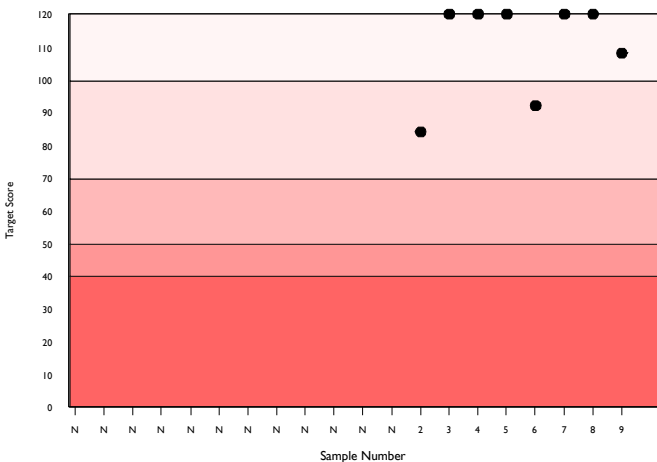
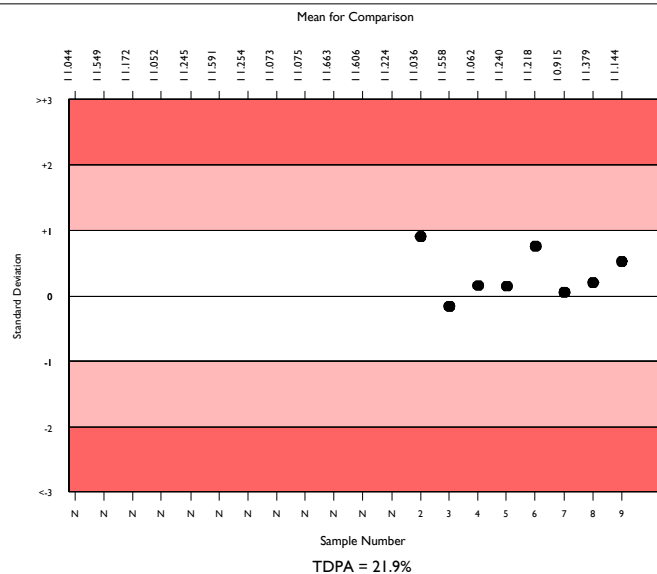
|                           | N    | Mean  | CV%  | U <sub>m</sub> | SDPA | Exc. |
|---------------------------|------|-------|------|----------------|------|------|
| All Methods               | 3048 | 1.443 | 26.3 | 0.01           | 0.16 | 198  |
| Siemens/Dade Thromborel S | 731  | 1.179 | 7.5  | 0.00           | 0.13 | 47   |
| Sysmex CA 500/600 series  | 223  | 1.144 | 6.3  | 0.01           | 0.13 | 12   |

|                       |       |        |         |
|-----------------------|-------|--------|---------|
| ▲ Your Result         | 1.210 | SDI    | 0.52    |
|                       |       | RMSDI  | Too Few |
| ■ Mean for Comparison | 1.144 | TS     | 108     |
|                       |       | RMST   | Too Few |
|                       |       | %DEV   | 5.8     |
|                       |       | RM%DEV | Too Few |

|   |        |
|---|--------|
| Acceptable limits derived from Biological Variation | N/A    |
| Acceptable limits of performance for RIQAS          | 21.90% |



| Method                           | N   | Mean  | CV%  | U <sub>m</sub> |
|----------------------------------|-----|-------|------|----------------|
| Siemens/Dade Thromborel S        | 731 | 1.179 | 7.5  | 0.00           |
| HemosIL RecombiPlasTin 2G        | 579 | 1.077 | 4.8  | 0.00           |
| Stago STA-NeoPTimal              | 442 | 1.847 | 7.5  | 0.01           |
| Siemens/Dade Innovin             | 431 | 2.023 | 10.0 | 0.01           |
| Stago STA Neoplastine CI Plus    | 156 | 1.418 | 15.2 | 0.02           |
| HemosIL PT-Fibrinogen HS Plus    | 47  | 1.409 | 7.7  | 0.02           |
| Human Thromboplastin             | 43  | 2.081 | 31.0 | 0.12           |
| Roche Cobas PT Screen            | 38  | 1.354 | 5.9  | 0.02           |
| Sclavo PT                        | 32  | 1.390 | 9.2  | 0.03           |
| Diagon, Dia-PT                   | 27  | 1.440 | 15.6 | 0.05           |
| Stago Neoplastine R              | 26  | 1.109 | 4.7  | 0.01           |
| Mindray/Longisland PT            | 29  | 1.516 | 10.9 | 0.04           |
| Helena Thromboplastin L          | 28  | 1.690 | 17.4 | 0.07           |
| Beijing Succeeder PT             | 25  | 1.174 | 4.2  | 0.01           |
| Roche Cobas PT Rec               | 21  | 2.933 | 5.7  | 0.05           |
| Biolabo Bio-TP (Low ISI)         | 18  | 1.672 | 4.1  | 0.02           |
| HemosIL ReadiPlasTin             | 20  | 1.095 | 5.3  | 0.02           |
| Erba Protimex PT                 | 18  | 1.312 | 9.8  | 0.04           |
| Labitec PT                       | 17  | 1.407 | 13.1 | 0.06           |
| Bio-Ksel PT Plus                 | 15  | 1.038 | 4.6  | 0.02           |
| MTI Diagnostics Prothrombin Time | 13  | 2.366 | 26.5 | 0.22           |

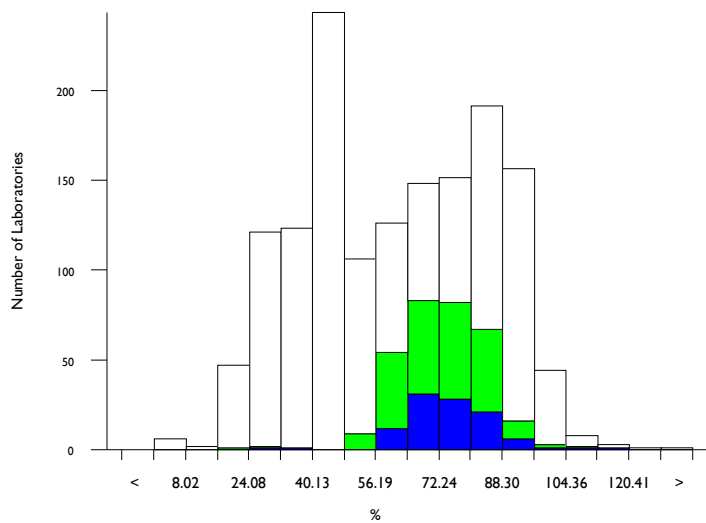


# PT activity, %

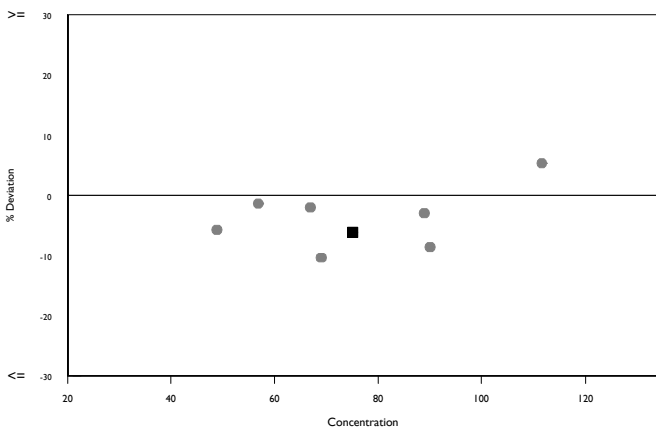
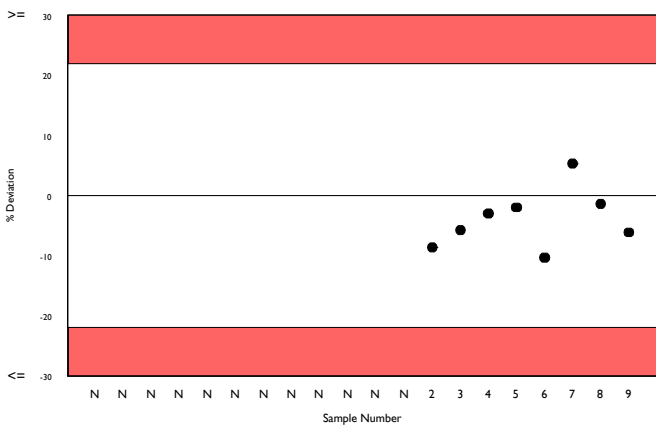
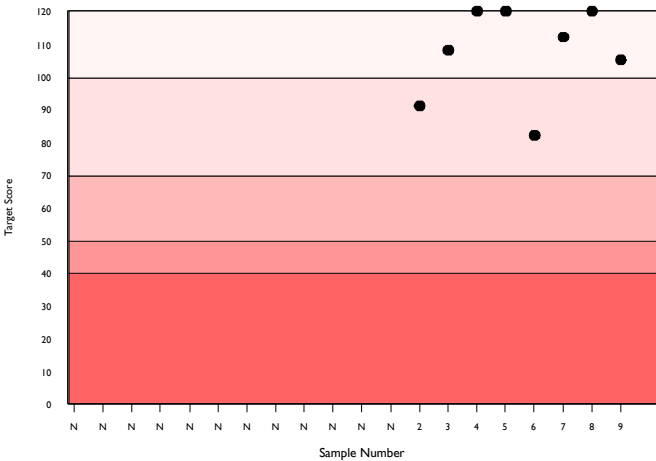
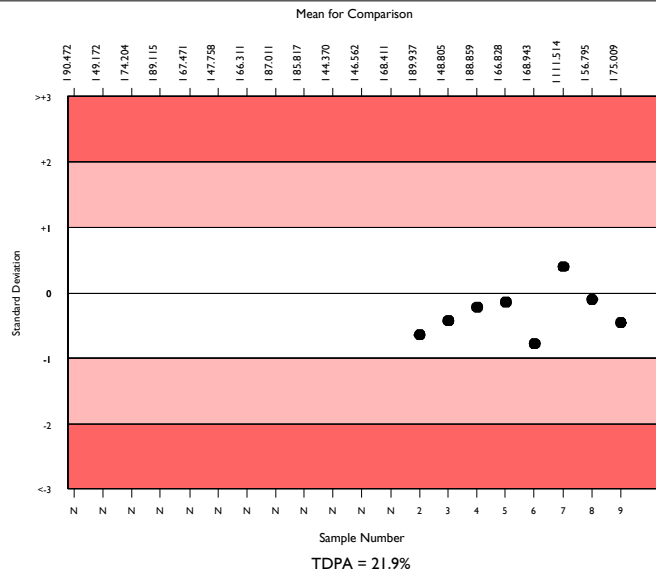
|                           | N    | Mean   | CV%  | U <sub>m</sub> | SDPA | Exc. |
|---------------------------|------|--------|------|----------------|------|------|
| All Methods               | 1438 | 61.801 | 35.9 | 0.73           | 8.23 | 39   |
| Siemens/Dade Thromborel S | 307  | 73.330 | 12.6 | 0.66           | 9.76 | 14   |
| Sysmex CA 500/600 series  | 95   | 75.009 | 10.7 | 1.03           | 9.99 | 8    |

|                       |        |        |         |
|-----------------------|--------|--------|---------|
| ▲ Your Result         | 70.400 | SDI    | -0.46   |
|                       |        | RMSDI  | Too Few |
| ■ Mean for Comparison | 75.009 | TS     | 105     |
|                       |        | RMTS   | Too Few |
|                       |        | %DEV   | -6.1    |
|                       |        | RM%DEV | Too Few |

|   |        |
|---|--------|
| Acceptable limits derived from Biological Variation | N/A    |
| Acceptable limits of performance for RIQAS          | 21.90% |



| Method                           | N   | Mean   | CV%  | U <sub>m</sub> |
|----------------------------------|-----|--------|------|----------------|
| Siemens/Dade Thromborel S        | 307 | 73.330 | 12.6 | 0.66           |
| Stago STA-NeoPTimal              | 262 | 42.964 | 8.8  | 0.29           |
| HemosIL RecombiPlasTin 2G        | 256 | 89.574 | 6.4  | 0.44           |
| Siemens/Dade Innovin             | 104 | 29.523 | 10.1 | 0.37           |
| HemosIL PT-Fibrinogen HS Plus    | 43  | 58.671 | 11.4 | 1.27           |
| Stago STA Neoplastine CI Plus    | 43  | 55.042 | 20.6 | 2.17           |
| Helena Thromboplastin L          | 21  | 54.186 | 16.8 | 2.49           |
| Human Thromboplastin             | 17  | 24.797 | 31.4 | 2.36           |
| Sclavo PT                        | 22  | 67.430 | 13.1 | 2.36           |
| Mindray/Longisland PT            | 21  | 60.763 | 21.8 | 3.61           |
| Biolabo Bio-TP (Low ISI)         | 19  | 52.709 | 8.5  | 1.28           |
| Beijing Succeder PT              | 17  | 87.835 | 7.0  | 1.87           |
| Stago Neoplastine R              | 17  | 81.294 | 7.6  | 1.86           |
| Labitec PT                       | 15  | 62.258 | 23.6 | 4.74           |
| Erba Protime PT                  | 15  | 66.344 | 20.3 | 4.35           |
| Roche Cobas PT Rec               | 13  | 20.931 | 5.5  | 0.40           |
| MTI Diagnostics Prothrombin Time | 9   | 25.478 | 12.7 | 1.35           |
| Roche Cobas PT Screen            | 11  | 74.245 | 10.0 | 2.80           |
| Diagon, Dia-PT                   | 11  | 47.836 | 27.6 | 4.97           |
| Tcoag TriniCLOT PT Excel S       | 9   | 27.911 | 8.2  | 0.95           |
| Biolabo Bio-TP                   | 8   | 36.450 | 23.2 | 3.74           |



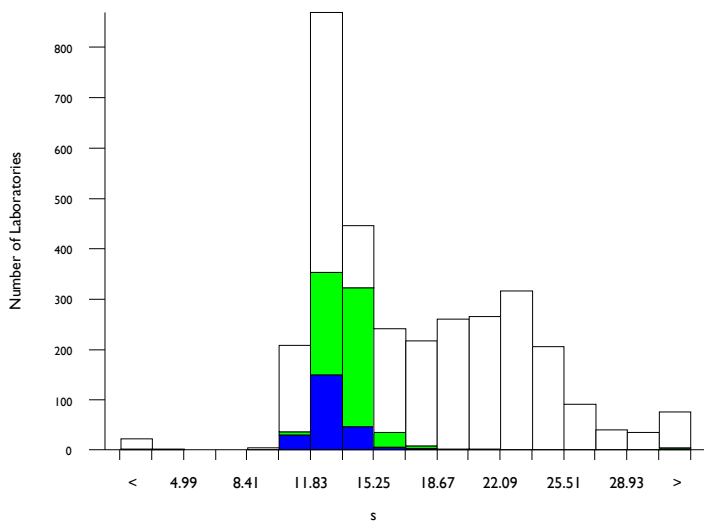


# PT in seconds, s

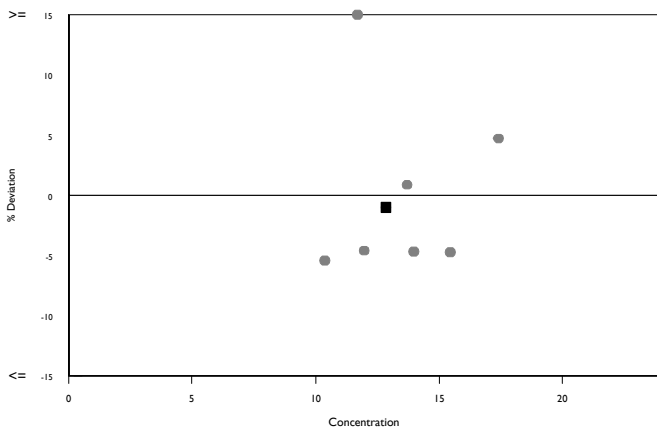
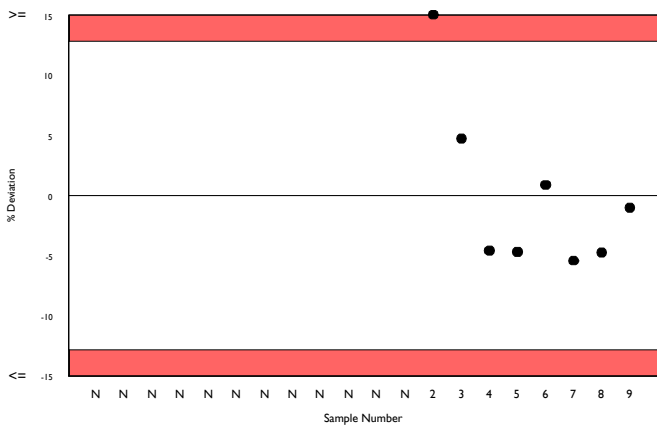
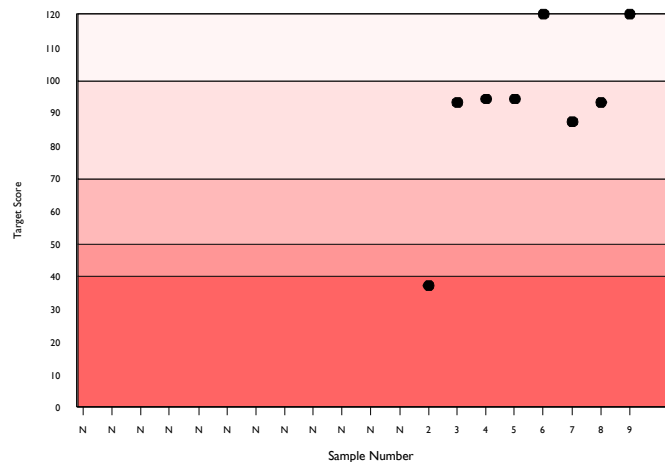
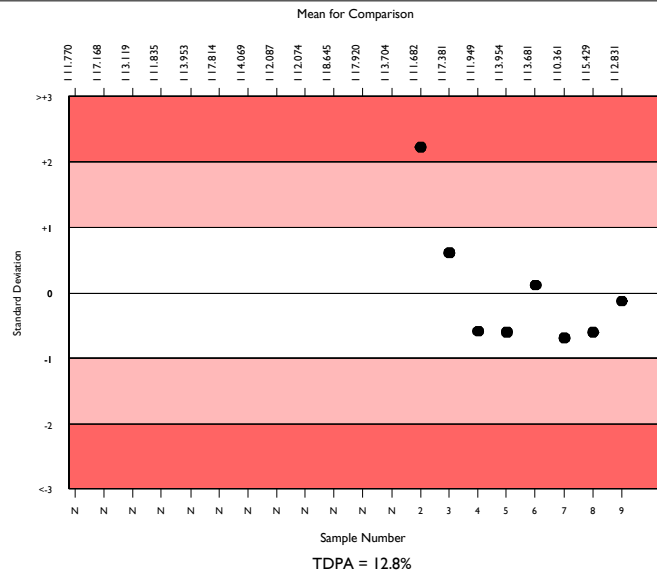
|                           | N    | Mean   | CV%  | U <sub>m</sub> | SDPA | Exc. |
|---------------------------|------|--------|------|----------------|------|------|
| All Methods               | 3114 | 16.961 | 26.9 | 0.10           | 1.32 | 178  |
| Siemens/Dade Thromborel S | 718  | 13.532 | 6.6  | 0.04           | 1.05 | 47   |
| Sysmex CA 500/600 series  | 214  | 12.831 | 6.1  | 0.07           | 1.00 | 23   |

|                       |        |                |                  |
|-----------------------|--------|----------------|------------------|
| ▲ Your Result         | 12.700 | SDI<br>RMSDI   | -0.13<br>Too Few |
| ■ Mean for Comparison | 12.831 | TS<br>RMTS     | 120<br>Too Few   |
|                       |        | %DEV<br>RM%DEV | -1.0<br>Too Few  |

|   |        |
|---|--------|
| Acceptable limits derived from Biological Variation | N/A    |
| Acceptable limits of performance for RIQAS          | 12.80% |



| Method                        | N   | Mean   | CV%  | U <sub>m</sub> |
|-------------------------------|-----|--------|------|----------------|
| Siemens/Dade Thromborel S     | 718 | 13.532 | 6.6  | 0.04           |
| HemosIL RecombiPlasTin 2G     | 573 | 12.225 | 4.1  | 0.03           |
| Siemens/Dade Innovin          | 451 | 20.505 | 9.7  | 0.12           |
| Stago STA-NeoPTimal           | 447 | 23.729 | 6.8  | 0.10           |
| Stago STA Neoplastine CI Plus | 184 | 18.168 | 16.9 | 0.28           |
| Human Thromboplastin          | 48  | 24.110 | 29.6 | 1.29           |
| HemosIL PT-Fibrinogen HS Plus | 44  | 19.335 | 4.3  | 0.16           |
| Roche Cobas PT Screen         | 37  | 14.273 | 3.8  | 0.11           |
| Helena Thromboplastin L       | 31  | 19.706 | 12.7 | 0.56           |
| Diagon, Dia-PT                | 25  | 17.064 | 11.9 | 0.51           |
| Sclavo PT                     | 24  | 17.785 | 10.2 | 0.46           |
| Mindray/Longisland PT         | 27  | 18.470 | 10.5 | 0.47           |
| Beijing Succeder PT           | 25  | 15.092 | 4.9  | 0.19           |
| Roche Cobas PT Rec            | 21  | 27.738 | 6.4  | 0.49           |
| Biolabo Bio-TP                | 23  | 21.439 | 27.5 | 1.54           |
| Labitec PT                    | 21  | 16.370 | 13.8 | 0.62           |
| Stago Neoplastine R           | 21  | 14.855 | 5.1  | 0.21           |
| Erba Protimex PT              | 21  | 16.986 | 12.8 | 0.59           |
| HemosIL ReadiplasTin          | 20  | 12.175 | 2.8  | 0.09           |
| Biolabo Bio-TP (Low ISI)      | 21  | 21.786 | 5.2  | 0.31           |
| Tcoag TriniCLOT PT Excel S    | 16  | 29.219 | 11.0 | 1.00           |



| Analyte                   | Mean for Comparison | Your Result | SDI   | RMSDI   | %DEV | RM%DEV  | TS  | RMTS    | Performance |
|---------------------------|---------------------|-------------|-------|---------|------|---------|-----|---------|-------------|
| D-Dimer (Pilot)           | 205.098             | 226.000     | 0.48  | Too Few | 10.2 | Too Few | 103 | Too Few |             |
| Fibrinogen                | 175.133             | 179.000     | 0.20  | Too Few | 2.2  | Too Few | 120 | Too Few |             |
| Antithrombin III activity | 66.900              | 80.600      | 1.56  | Too Few | 20.5 | Too Few | 53  | Too Few |             |
| aPTT as a ratio           | 1.974               | 1.970       | -0.02 | Too Few | -0.2 | Too Few | 120 | Too Few |             |
| aPTT in seconds           | 49.741              | 48.200      | -0.28 | Too Few | -3.1 | Too Few | 120 | Too Few |             |
| PT as an INR              | 1.144               | 1.210       | 0.52  | Too Few | 5.8  | Too Few | 108 | Too Few |             |
| PT activity               | 75.009              | 70.400      | -0.46 | Too Few | -6.1 | Too Few | 105 | Too Few |             |
| PT in seconds             | 12.831              | 12.700      | -0.13 | Too Few | -1.0 | Too Few | 120 | Too Few |             |

ORMSDI N/A

ORM%DEV N/A

ORMTS N/A

END OF REPORT