

Laboratorio Emotest s.r.l.

COAGULATION

CYCLE 15 SAMPLE 8

Explanation of codes used in this report

R - Results removed due to reconstitution error
N - No result returned
C - Result corrected

Authorised by: Sally Picton, RIQAS Manager

Issue No: 1

Issue Date: 23/08/2023

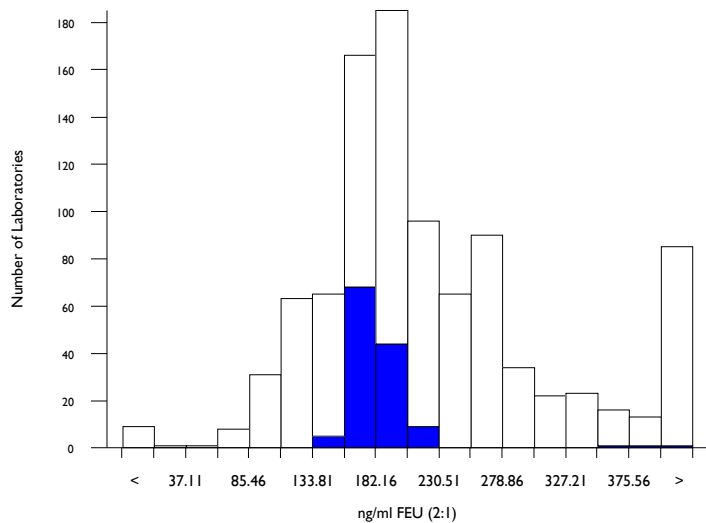
Randox Laboratories Limited
55 Diamond Road
CRUMLIN BT29 4QY
Tel: +44 (0)28 9445 4399
Fax: +44 (0)28 9445 4398
Email: mail@riqas.com

D-Dimer (Pilot), ng/ml FEU (2:1)

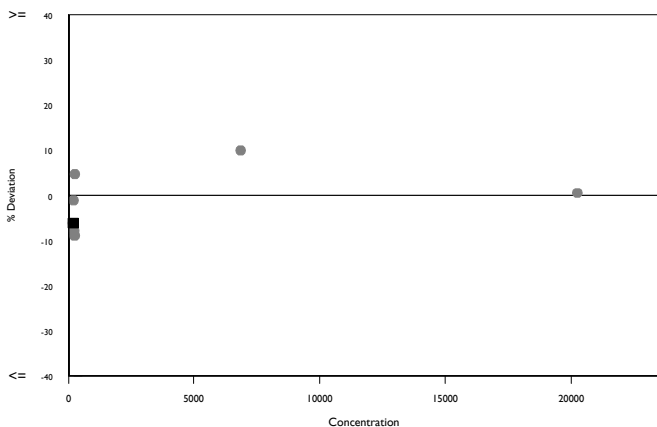
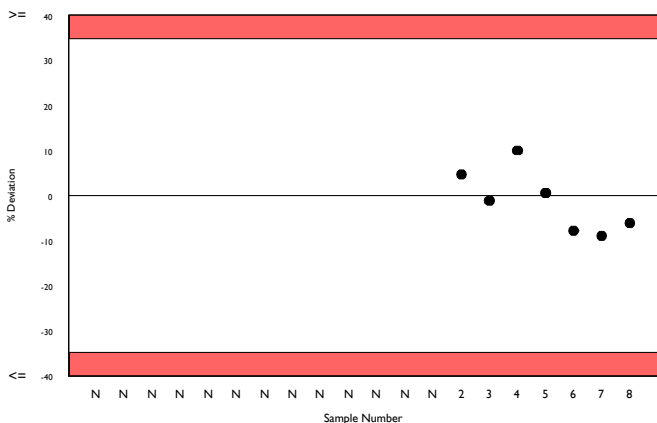
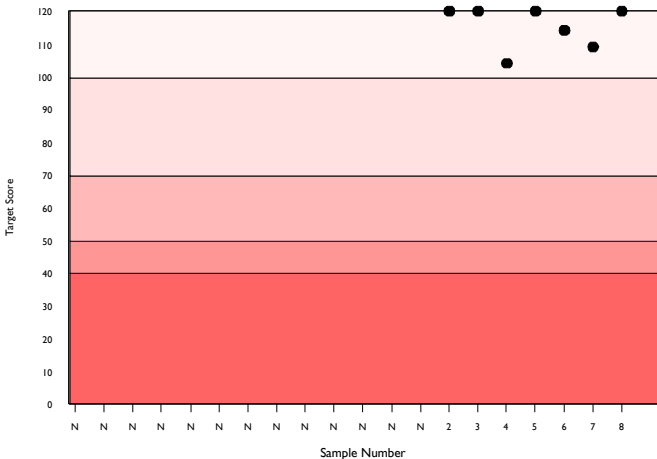
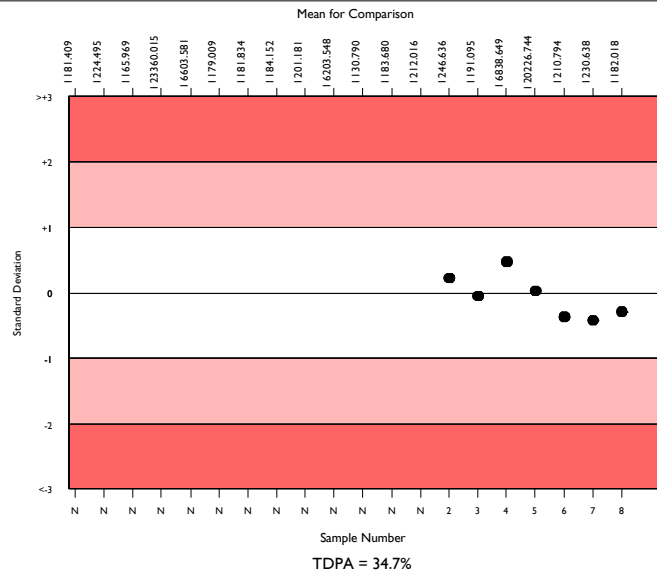
	N	Mean	CV%	U _m	SDPA	Exc.
All Methods	873	206.340	31.2	2.73	43.53	266
Biomerieux VIDAS Exclusion II	116	182.018	6.8	1.43	38.40	13
Biomerieux Vidas/miniVidas/Vidas 3	116	182.018	6.8	1.43	38.40	13

▲ Your Result	170.800	SDI	-0.29
		RMSDI	Too Few
■ Mean for Comparison	182.018	TS	120
		RMTS	Too Few
		%DEV	-6.2
		RM%DEV	Too Few

Acceptable limits derived from Biological Variation	N/A
Acceptable limits of performance for RIQAS	34.70%



Method	N	Mean	CV%	U _m
Siemens Innovance D-Dimer	194	156.062	21.4	3.00
HemosIL D-Dimer HS 500	157	224.560	16.1	3.60
Stago Sta Liatest D-DI/Plus	121	253.562	16.0	4.60
Biomerieux VIDAS Exclusion II	116	182.018	6.8	1.43
HemosIL D-Dimer	48	416.073	15.8	11.87
HemosIL D-Dimer HS	47	232.147	23.0	9.76
Roche Cobas D-DI 2	30	165.467	21.8	8.23
Roche Cobas D-DI2 citrated plasma	12	161.583	7.2	4.18
HemosIL D-Dimer 500	10	218.100	17.1	14.78
Abbott Architect/Alinity Quantia D-Dimer	11	392.245	7.6	11.27
ImproGen D-Dimer	9	207.811	8.2	7.13
Kinetic Latex Turbidimetry D-Dimer	9	497.778	7.9	16.37
Diagon D-Dimer	7	110.000	11.5	5.98
Finicare D-Dimer	4	100.000	0.0	0.00
Roche Cobas t511/t711 D-DI2	1	140.000	0.0	0.00
Siemens D-Dimer Plus	4	380.000	0.0	0.00
Siemens Immulite 2000 D-Dimer	8	184.750	19.5	15.89
Roche Integra D-DI 2	7	167.286	18.6	14.68
Roche Cobas h232 D-Dimer	5	200.000	0.0	0.00
SNIBE Maglumi analyser	6	297.667	19.3	29.35
Boditech AFAS D-Dimer	6	270.983	18.2	25.10

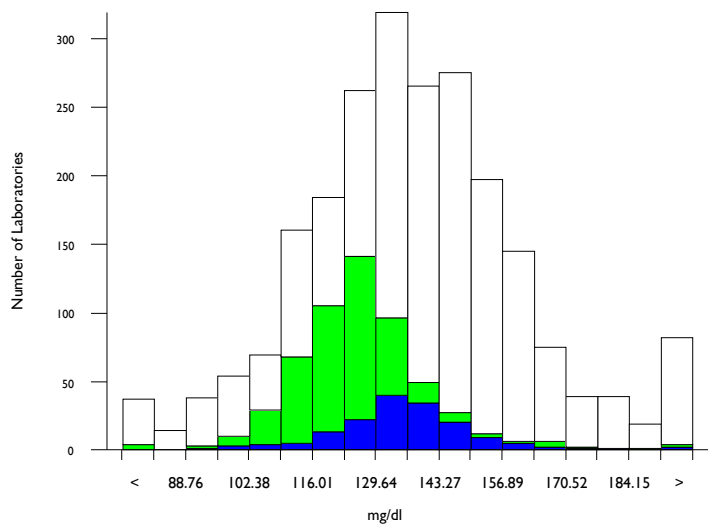


Fibrinogen, mg/dl

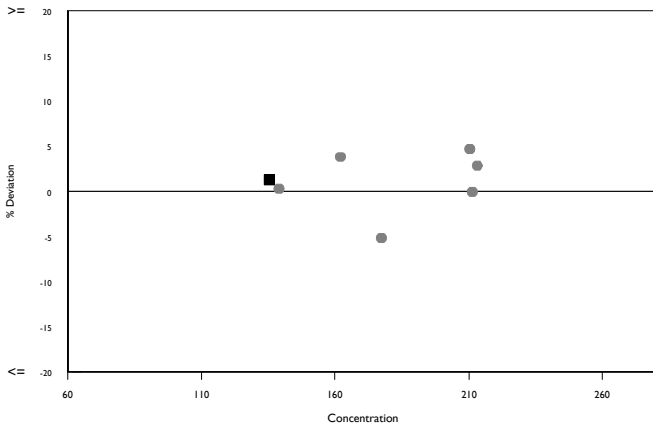
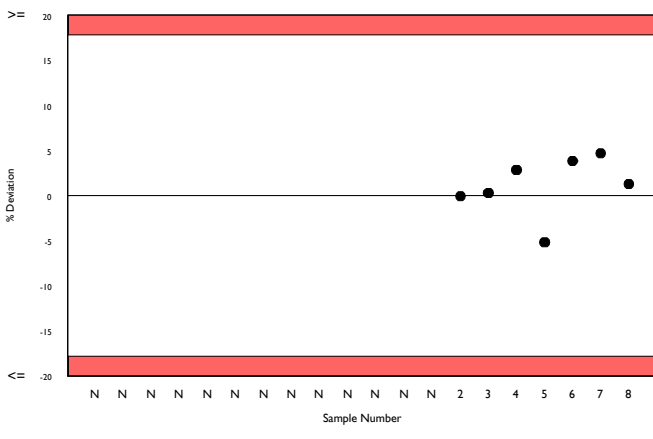
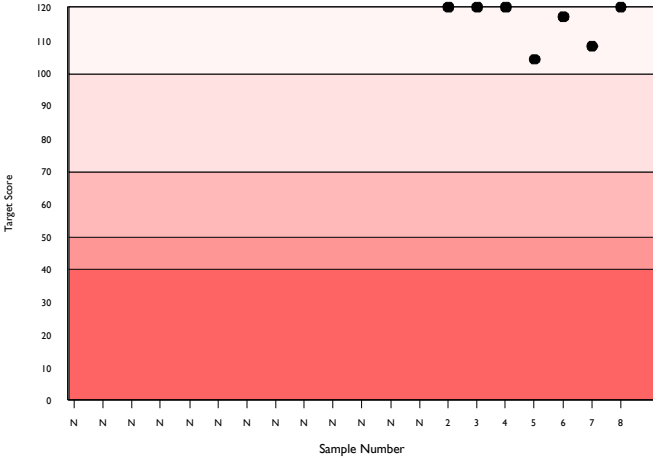
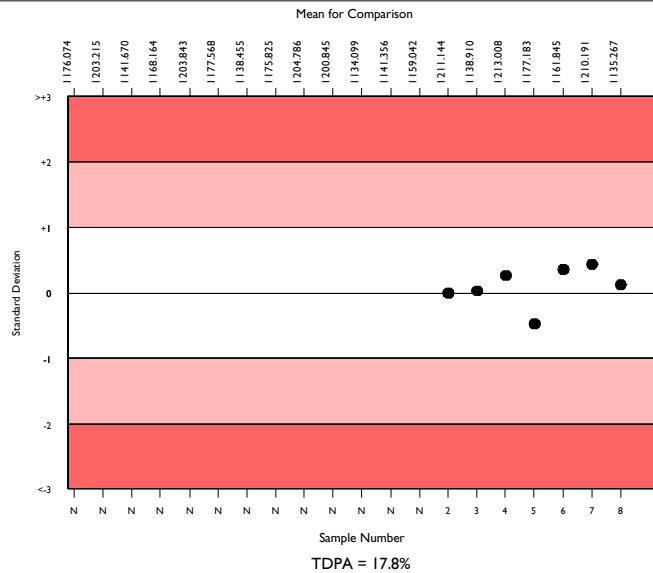
	N	Mean	CV%	U _m	SDPA	Exc.
All Methods	2083	136.459	13.3	0.49	14.76	195
Siemens/Dade Thrombin	519	125.247	8.2	0.56	13.55	45
Sysmex CA 500/600 series	147	135.267	8.0	1.11	14.63	15

▲ Your Result	137.000	SDI	0.12
		RMSDI	Too Few
■ Mean for Comparison	135.267	TS	120
		RMTS	Too Few
		%DEV	1.3
		RM%DEV	Too Few

Acceptable limits derived from Biological Variation	N/A
Acceptable limits of performance for RIQAS	17.80%



Method	N	Mean	CV%	U _m
Siemens/Dade Thrombin	519	125.247	8.2	0.56
Stago Fibrinogen/ Liquid-Fib	403	150.279	6.1	0.56
HemosIL QFA (bovine thrombin)	256	138.820	11.7	1.27
HemosIL Fibrinogen C	214	142.754	7.3	0.89
Siemens/Dade Multifibrin U	196	112.219	15.3	1.52
HemosIL RecombiPlasTin 2G	32	108.526	16.4	3.92
Sclavo Fibrinogen	30	145.827	10.0	3.33
Diagon Dia-FIB	26	120.569	8.0	2.35
Biolabo Bio-Fibri	27	155.016	12.3	4.58
Human Fibrinogen	24	168.824	8.8	3.77
HemosIL PT-Fibrinogen HS Plus	20	151.245	9.1	3.83
Mindray/Longisland Fibrinogen	20	133.150	12.8	4.76
Roche Cobas t511/t711 Fibrinogen	20	133.600	3.6	1.34
Helena Clauss Fibrinogen 100	17	153.529	9.4	4.35
Technoclone Fibrinogen	18	175.528	17.3	8.92
Bio-Ksel Fibrinogen	15	159.067	8.3	4.26
Labitec Fibrinogen	14	140.179	10.8	5.07
Tcoag TriniCLOT Fibrinogen	13	144.654	11.4	5.69
Yumizen G Fibrinogen	11	121.455	10.2	4.67
Siemens/Dade Innovin derived Fibrinogen	10	100.400	9.2	3.64
Roche Cobas t411 Fibrinogen	12	149.250	6.5	3.48

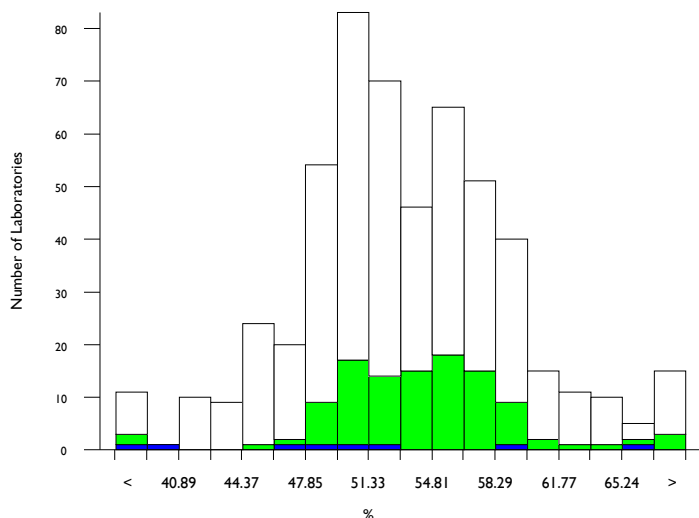


Antithrombin III activity, %

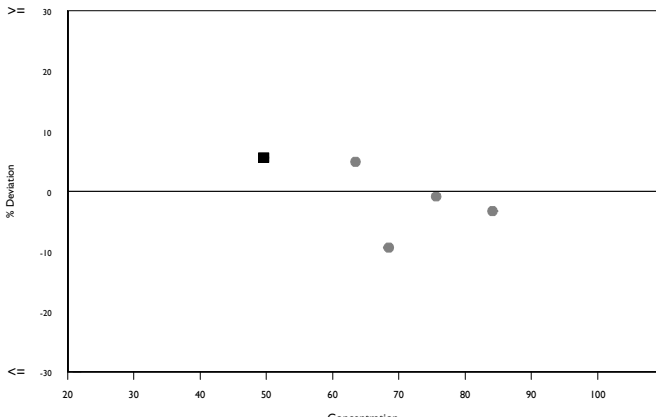
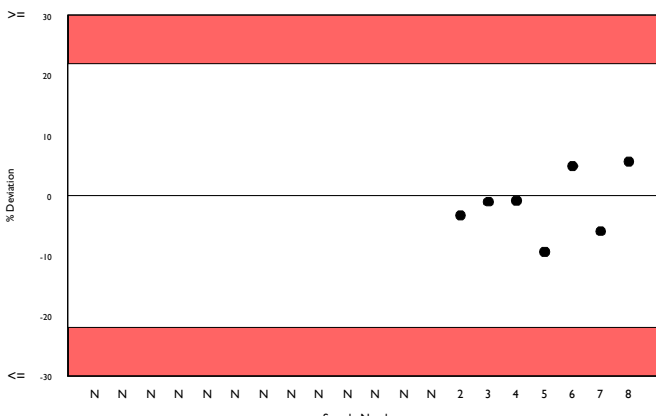
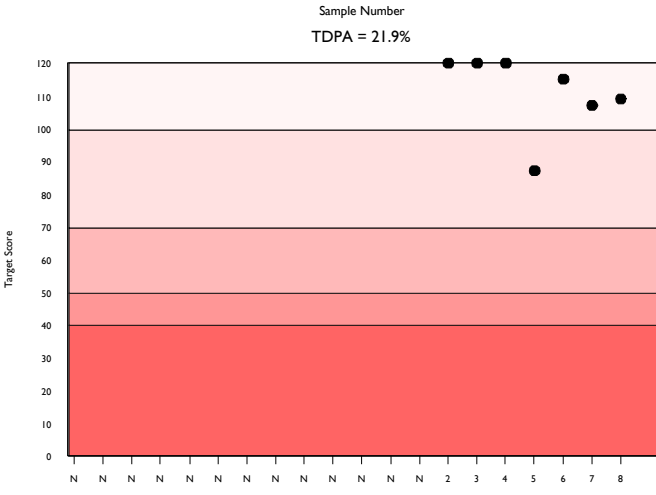
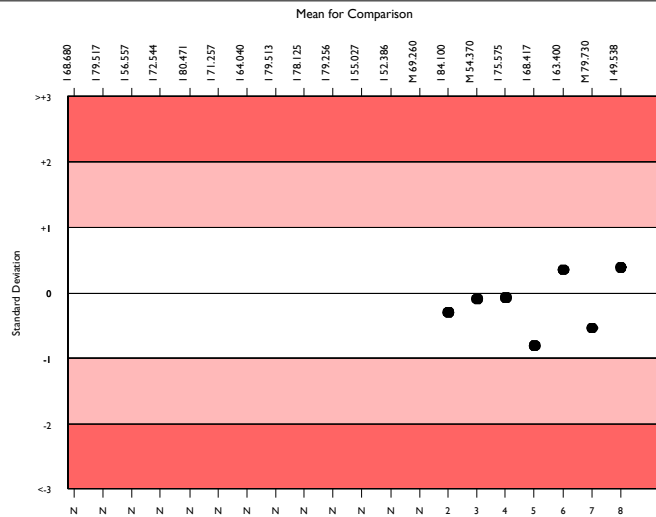
	N	Mean	CV%	U _m	SDPA	Exc.
All Methods	498	53.074	8.7	0.26	5.81	42
Siemens/Dade Berichrom ATIII	102	54.082	6.6	0.44	5.92	11
Sysmex CA 500/600 series	8	49.538	21.5	4.71	7.18a	0

▲ Your Result	52.300	SDI	0.38
		RMSDI	Too Few
■ Mean for Comparison	49.538	TS	109
		RMTS	Too Few
		%DEV	5.6
		RM%DEV	Too Few

Acceptable limits derived from Biological Variation	N/A
Acceptable limits of performance for RIQAS	21.90%



Method	N	Mean	CV%	U _m
HemosL Liquid Antithrombin	164	50.049	8.2	0.40
Siemens/Dade Berichrom ATIII	102	54.082	6.6	0.44
Siemens Innovance Antithrombin III	79	52.534	6.4	0.47
STACHrom ATIII	73	58.130	6.9	0.58
Sclavo ATIII	17	52.071	8.5	1.34
Siemens/Dade Antithrombin III	11	56.580	3.5	0.74
Roche Chromogenic Thrombin	11	55.356	10.3	2.16
Roche Antithrombin	10	53.972	6.6	1.41
HaemoDiagnostics Antithrombin III (Fxa)	5	48.140	23.6	6.36
Tehnologia Standart Antithrombin III	5	52.280	15.2	4.43
Chromogenix Substrate	4	48.875	18.2	5.55
HemosL Lyophilised Antithrombin	4	53.150	6.7	2.23
Helena Chrom-Z	3	54.467	9.8	3.83
Biodevice ATIII	2	57.300	17.3	8.75
Diagon ATIII	2	57.500	8.6	4.37

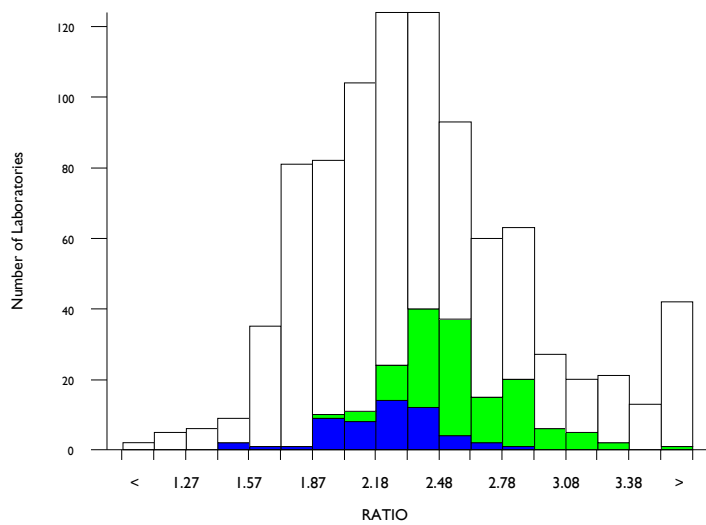


aPTT as a ratio, RATIO

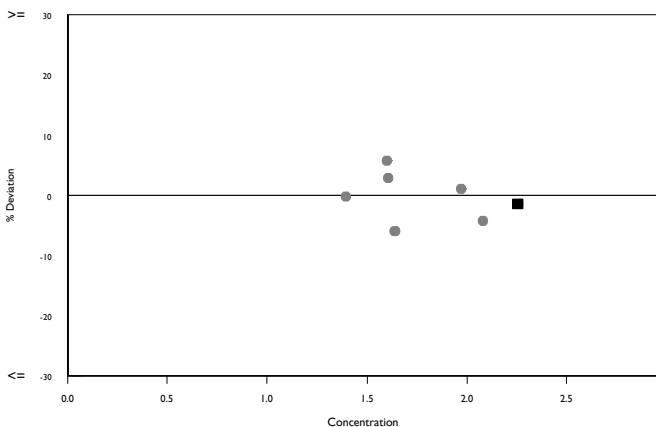
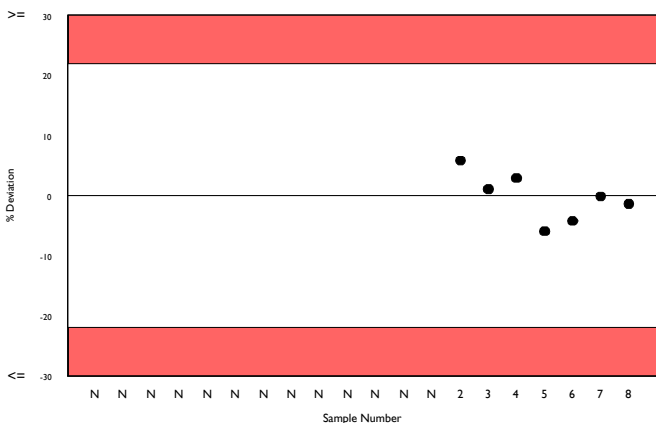
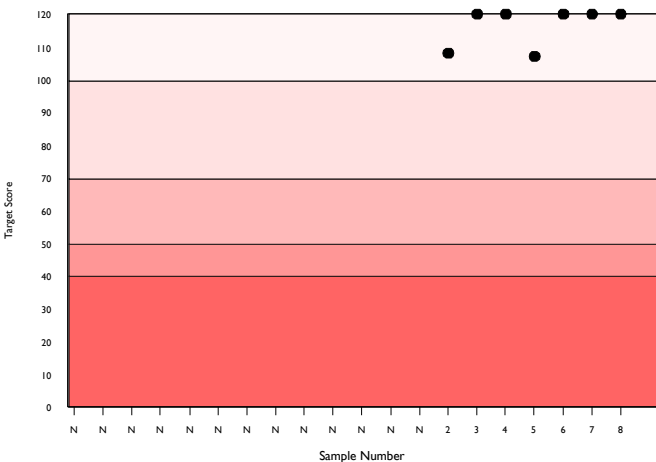
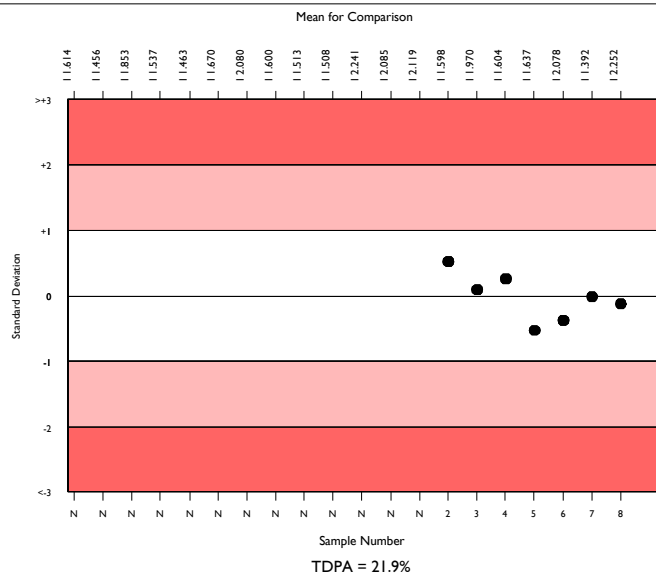
	N	Mean	CV%	U _m	SDPA	Exc.
All Methods	841	2.332	17.2	0.02	0.26	73
Siemens/Dade Actin FS	163	2.475	10.4	0.03	0.28	12
Sysmex CA 500/600 series	48	2.252	8.4	0.03	0.25	6

▲ Your Result	2.220	SDI	-0.13
		RMSDI	Too Few
■ Mean for Comparison	2.252	TS	120
		RMTS	Too Few
		%DEV	-1.4
		RM%DEV	Too Few

Acceptable limits derived from Biological Variation	N/A
Acceptable limits of performance for RIQAS	21.90%



Method	N	Mean	CV%	U _m
Siemens/Dade Actin FS	163	2.475	10.4	0.03
HemosIL Synthasil	132	2.626	12.1	0.03
HemosIL APTT-SP liquid	99	1.823	8.1	0.02
Siemens/Dade Actin FSL	97	2.109	7.4	0.02
Stago CK Prest	63	2.445	6.6	0.03
Siemens/Dade Pathromtin SL	49	3.606	17.6	0.11
Stago PTT Automate	47	2.163	8.5	0.03
Stago Cephascreen	19	2.211	13.5	0.09
Sclavo APTT-S	16	3.172	11.2	0.11
Stago aPTT	16	2.225	13.3	0.09
Helena aPTT Si L Minus	15	2.883	19.1	0.18
Human Hemostat APTT	15	2.025	17.5	0.11
Labitec aPTT	13	2.338	24.5	0.20
Biolabo Bio-CK APTT	11	2.287	7.0	0.06
Erba Actime APTT	10	2.239	25.6	0.23
Tcoag TriniCLOT aPTT S	10	2.800	17.3	0.19
Bio-Ksel System APTTs	8	1.808	7.4	0.06
MTI Diagnostics APTT	5	2.387	5.5	0.07
Diagon Dia-PTT Lyophilised	6	2.333	3.8	0.05
Media IVD aPTT	5	2.109	13.4	0.16
Teco TEClot APTT	4	2.783	19.0	0.33

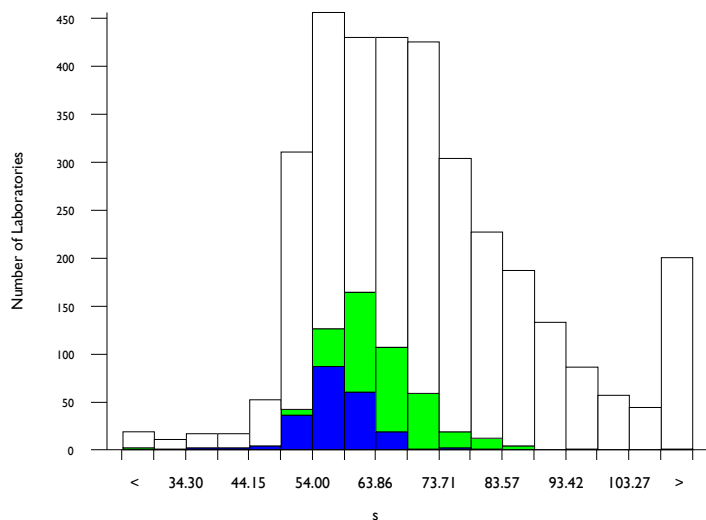


aPTT in seconds, s

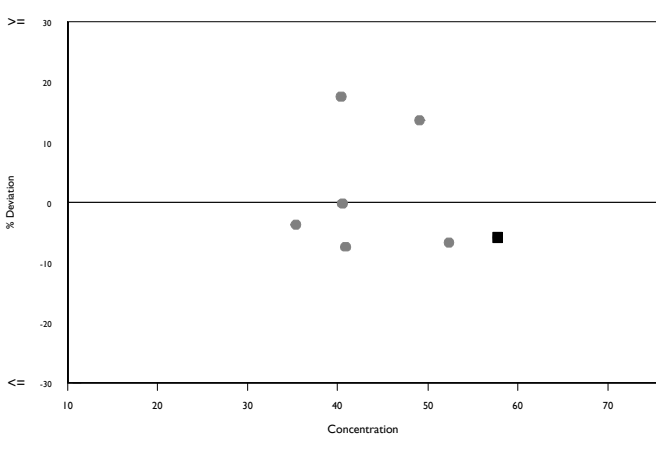
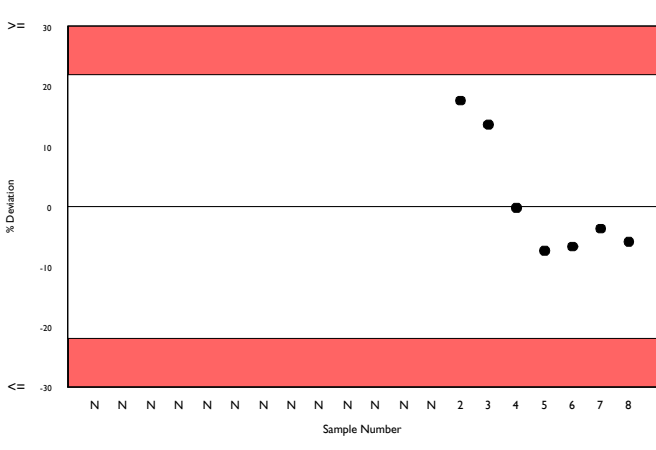
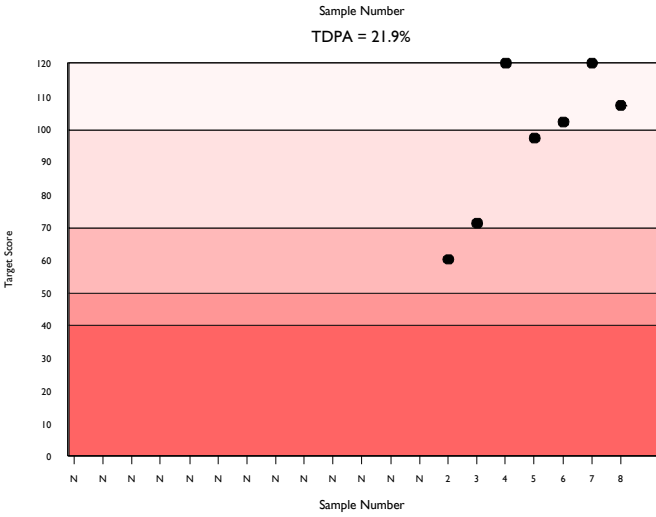
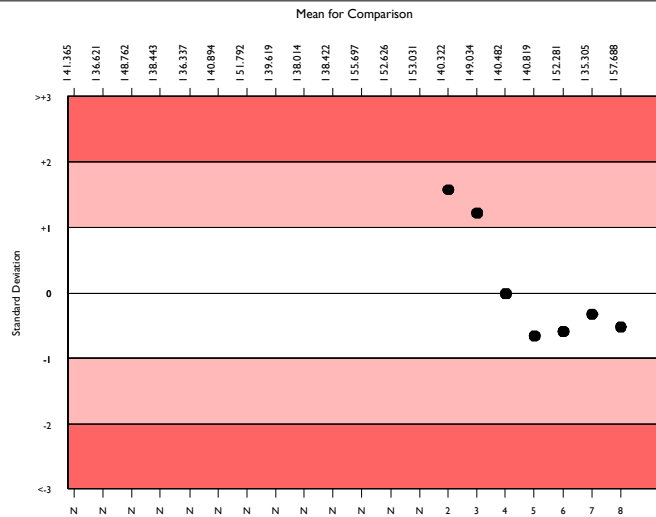
	N	Mean	CV%	U _m	SDPA	Exc.
All Methods	3133	68.789	19.1	0.29	7.69	288
Siemens/Dade Actin FS	513	61.888	9.4	0.32	6.92	33
Sysmex CA 500/600 series	200	57.688	7.2	0.37	6.45	16

▲ Your Result	54.300	SDI	-0.53
		RMSDI	Too Few
■ Mean for Comparison	57.688	TS	107
		RMTS	Too Few
		%DEV	-5.9
		RM%DEV	Too Few

Acceptable limits derived from Biological Variation	N/A
Acceptable limits of performance for RIQAS	21.90%



Method	N	Mean	CV%	U _m
Siemens/Dade Actin FS	513	61.888	9.4	0.32
Stago CK Prest	384	74.988	8.9	0.43
HemosIL Synthasil	365	79.623	14.6	0.76
Siemens/Dade Actin FSL	328	57.772	7.0	0.28
HemosIL APTT-SP liquid	264	53.081	6.0	0.25
Siemens/Dade Pathromtin SL	275	108.988	14.0	1.15
Stago PTT Automate	160	72.055	6.3	0.45
Stago aPTT	86	70.678	9.0	0.86
Stago Cephascreen	82	71.825	11.3	1.12
Human Hemostat APTT	51	65.175	14.2	1.61
Beijing Succeder aPTT	37	68.105	6.5	0.91
Biolabo Bio-CK APTT	30	65.295	13.2	1.97
Sclavo APTT-S	32	89.628	12.0	2.38
Helena aPTT Si L Minus	27	80.319	17.2	3.33
Roche Cobas APTT	25	80.060	14.5	2.90
Mindray/Longisland APTT	27	64.164	17.9	2.76
Labitec aPTT	26	73.027	15.6	2.79
Siemens/Dade Actin	25	64.668	6.0	0.96
Tcoag TriniCLOT aPTT S	24	77.633	11.6	2.31
Cobas aPTT MedS	21	98.399	6.3	1.68
Diagon Dia-PTT Liquid	25	66.957	15.4	2.58

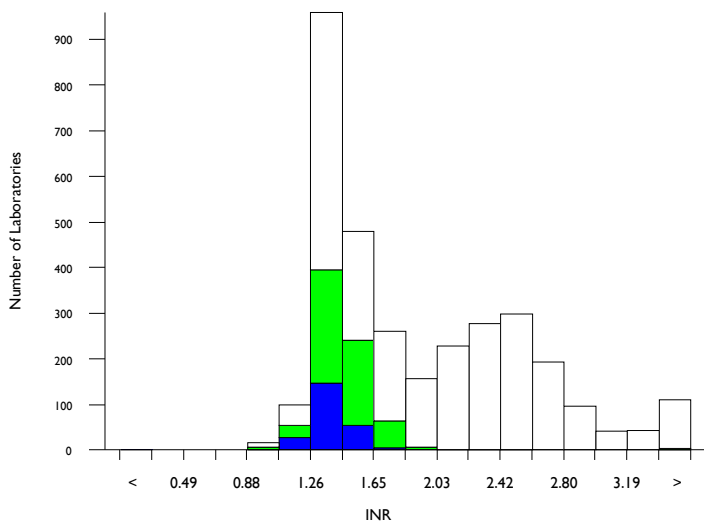


PT as an INR, INR

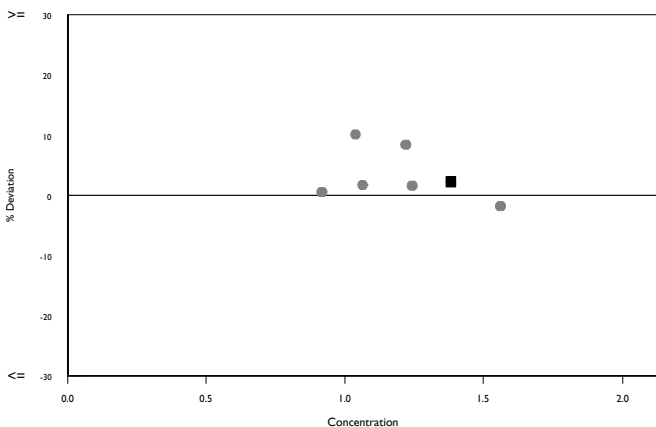
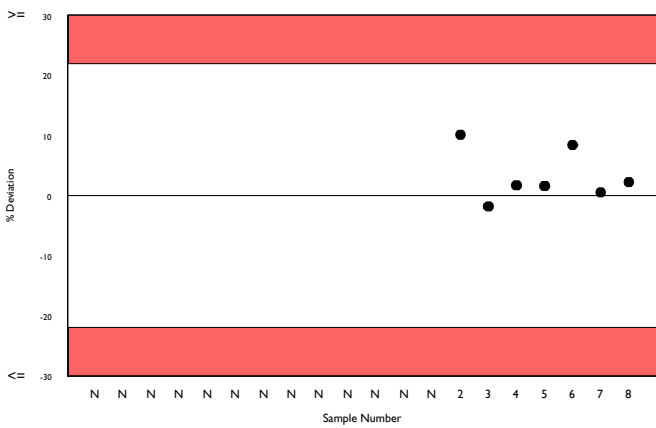
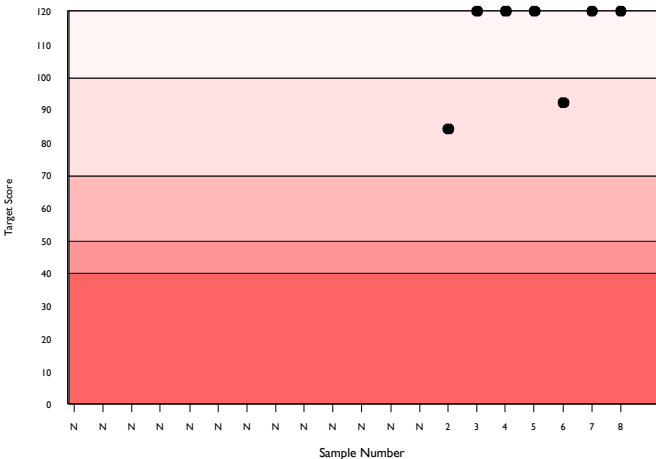
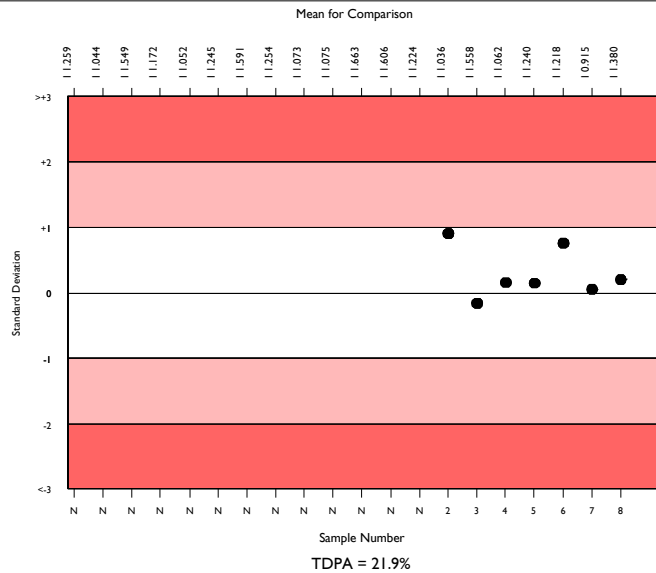
	N	Mean	CV%	U _m	SDPA	Exc.
All Methods	3073	1.845	27.9	0.01	0.21	182
Siemens/Dade Thromborel S	719	1.432	8.2	0.01	0.16	52
Sysmex CA 500/600 series	218	1.380	6.5	0.01	0.15	16

▲ Your Result	1.410	SDI	0.20
		RMSDI	Too Few
■ Mean for Comparison	1.380	TS	120
		RMTS	Too Few
		%DEV	2.2
		RM%DEV	Too Few

Acceptable limits derived from Biological Variation	N/A
Acceptable limits of performance for RIQAS	21.90%



Method	N	Mean	CV%	U _m
Siemens/Dade Thromborel S	719	1.432	8.2	0.01
HemosIL RecombiPlasTin 2G	582	1.403	4.7	0.00
Stago STA-NeoPTimal	457	2.432	9.5	0.01
Siemens/Dade Innovin	424	2.534	10.5	0.02
Stago STA Neoplastine CI Plus	159	1.864	12.0	0.02
Human Thromboplastin	43	2.491	22.6	0.11
HemosIL PT-Fibrinogen HS Plus	46	1.925	8.6	0.03
Beijing Succeder PT	39	1.465	9.1	0.03
Roche Cobas PT Screen	34	1.674	6.4	0.02
Stago Neoplastine R	26	1.313	4.6	0.01
Sclavo PT	25	1.939	5.5	0.03
Helena Thromboplastin L	26	2.475	18.4	0.11
Diagon, Dia-PT	26	1.927	21.9	0.10
Mindray/Longisland PT	25	1.868	13.8	0.06
Roche Cobas PT Rec	20	3.608	5.0	0.05
Erba Protine PT	23	1.969	19.1	0.10
Biolabo Bio-TP (Low ISI)	17	2.171	6.3	0.04
HemosIL ReadiPlasTin	21	1.439	5.7	0.02
Labitec PT	16	1.793	15.2	0.09
Tcoag TriniCLOT PT Excel S	16	4.098	16.5	0.21
Bio-Ksel PT Plus	16	1.336	5.2	0.02



PT activity, %

All Methods

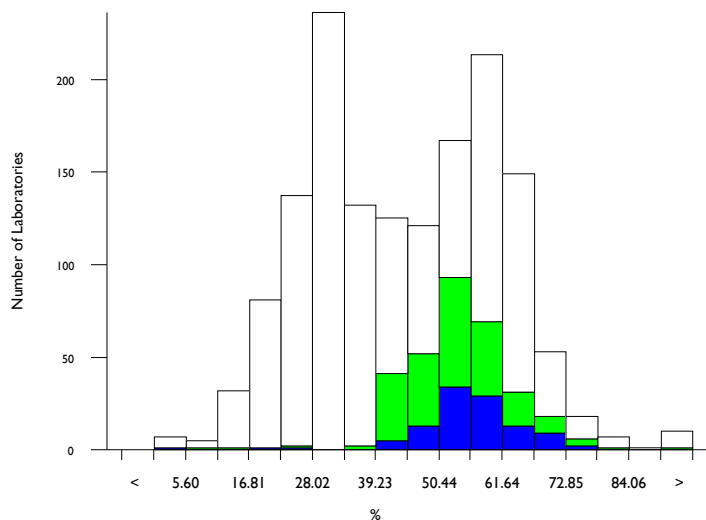
Siemens/Dade Thromborel S

Sysmex CA 500/600 series

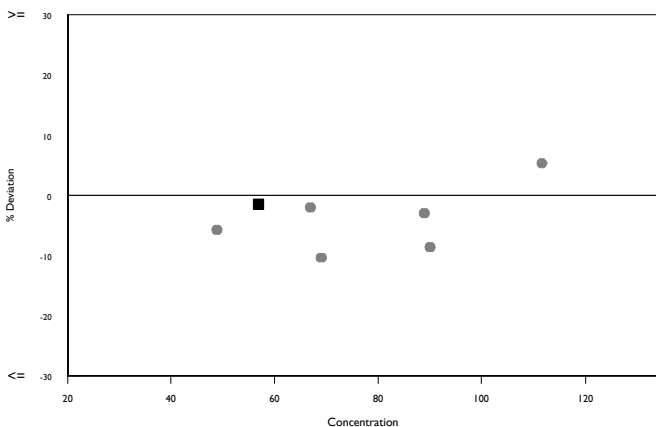
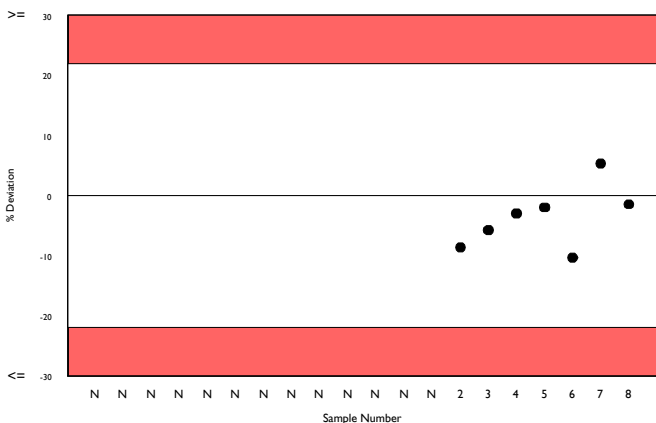
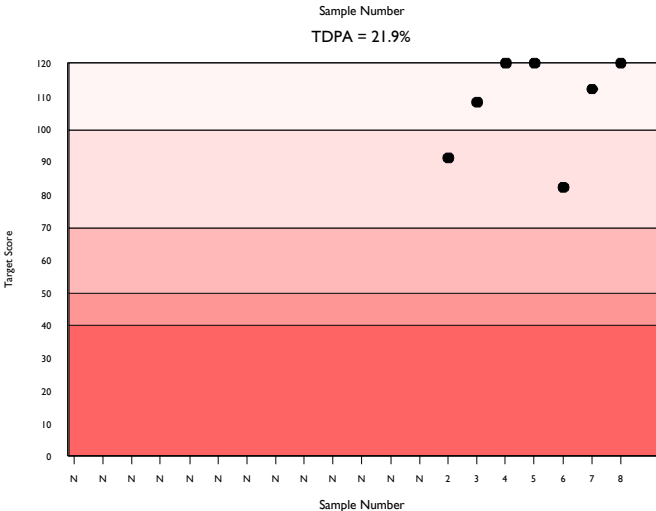
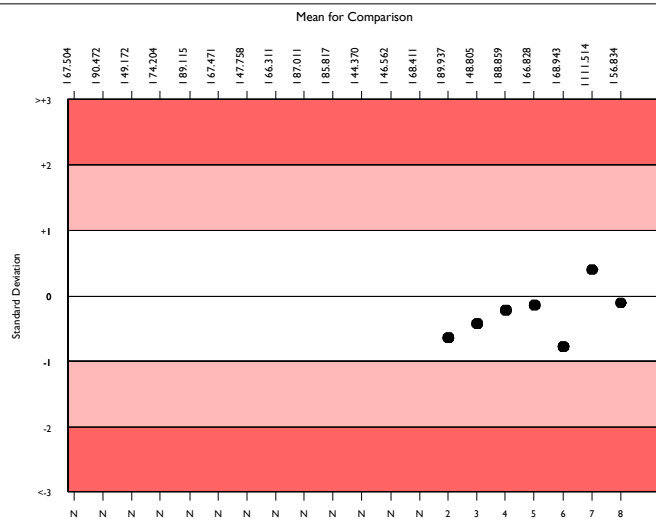
N	Mean	CV%	U _m	SDPA	Exc.
1445	44.151	34.4	0.50	5.88	53
298	53.885	13.2	0.52	7.17	22
100	56.834	11.4	0.81	7.57	8

▲ Your Result	56.000	SDI	-0.11
		RMSDI	Too Few
■ Mean for Comparison	56.834	TS	120
		RMTS	Too Few
		%DEV	-1.5
		RM%DEV	Too Few

Acceptable limits derived from Biological Variation	N/A
Acceptable limits of performance for RIQAS	21.90%



Method	N	Mean	CV%	U _m
Siemens/Dade Thromborel S	298	53.885	13.2	0.52
Stago STA-NeoPTimal	266	31.165	8.6	0.21
HemosIL RecombiPlasTin 2G	255	60.892	6.4	0.31
Siemens/Dade Innovin	108	22.458	15.4	0.42
Stago STA Neoplastine CI Plus	47	39.577	18.6	1.34
HemosIL PT-Fibrinogen HS Plus	42	39.343	13.6	1.03
Human Thromboplastin	22	24.742	23.8	1.57
Beijing Succeder PT	24	63.431	14.8	2.39
Helena Thromboplastin L	20	36.450	14.7	1.49
Sclavo PT	20	41.455	5.3	0.62
Mindray/Longisland PT	17	46.355	29.3	4.11
Biolabo Bio-TP (Low ISI)	15	39.055	9.3	1.17
Stago Neoplastine R	18	59.667	7.5	1.32
Labitec PT	13	44.495	26.1	4.03
Erba Prottime PT	12	44.990	14.3	2.33
Roche Cobas PT Rec	12	16.142	9.0	0.52
Roche Cobas PT Screen	11	50.973	7.0	1.34
MTI Diagnostics Prothrombin Time	13	32.292	25.3	2.83
Tcoag TriniCLOT PT Excel S	12	16.500	22.6	1.35
Biolabo Bio-TP	10	30.715	29.3	3.56
Diagon, Dia-PT	9	39.522	2.5	0.41

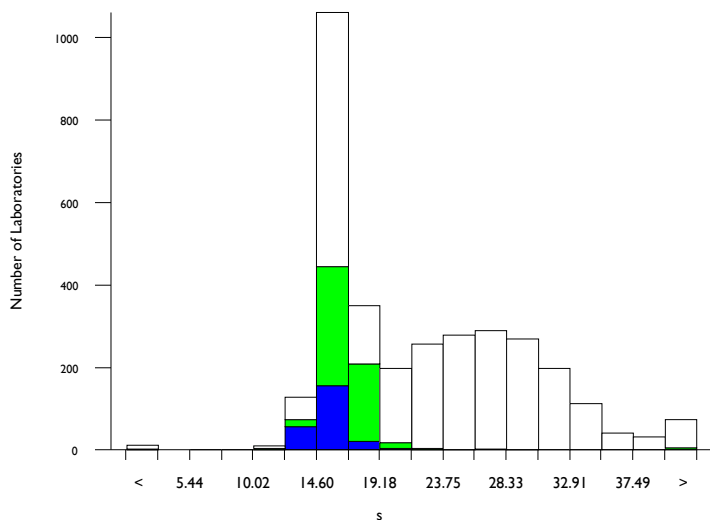


PT in seconds, s

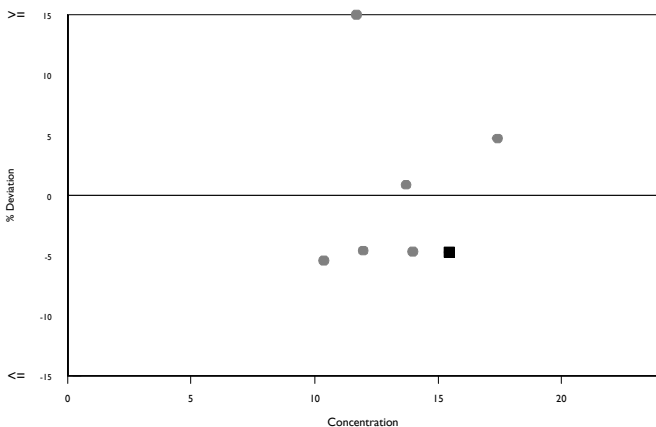
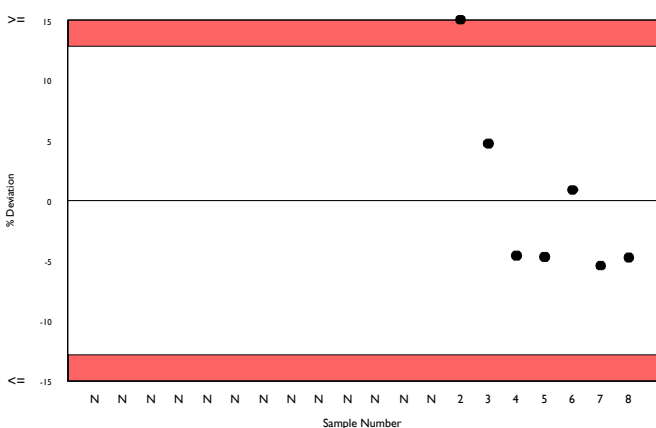
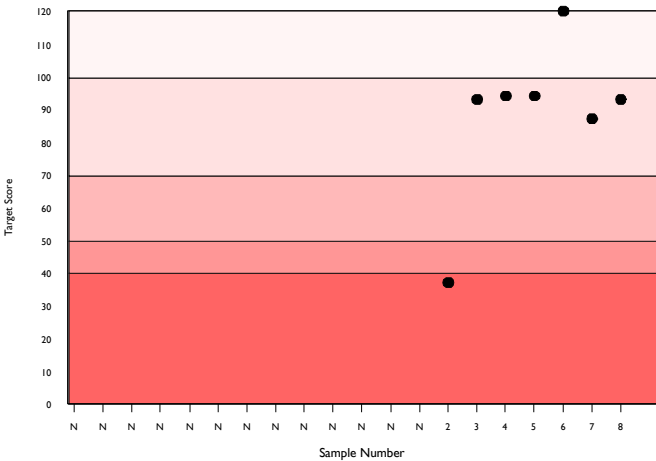
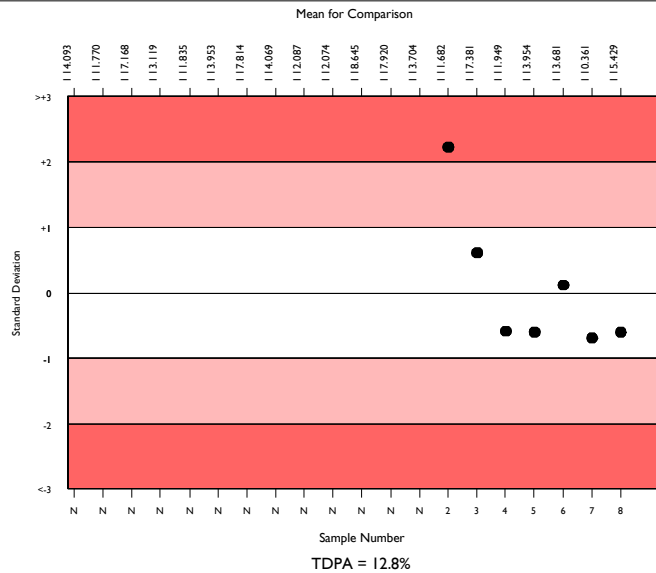
	N	Mean	CV%	U _m	SDPA	Exc.
All Methods	3143	21.470	28.4	0.14	1.67	163
Siemens/Dade Thromborel S	706	16.226	7.0	0.05	1.26	56
Sysmex CA 500/600 series	223	15.429	6.0	0.08	1.20	19

▲ Your Result	14.700	SDI	-0.61
		RMSDI	Too Few
■ Mean for Comparison	15.429	TS	93
		RMTS	Too Few
		%DEV	-4.7
		RM%DEV	Too Few

Acceptable limits derived from Biological Variation	N/A
Acceptable limits of performance for RIQAS	12.80%



Method	N	Mean	CV%	U _m
Siemens/Dade Thromborel S	706	16.226	7.0	0.05
HemosIL RecombiPlasTin 2G	571	15.873	4.0	0.03
Stago STA-NeoPTimal	450	30.624	8.2	0.15
Siemens/Dade Innovin	450	25.576	10.3	0.16
Stago STA Neoplastine CI Plus	188	23.134	15.0	0.32
Human Thromboplastin	55	27.118	23.9	1.09
HemosIL PT-Fibrinogen HS Plus	47	25.760	7.4	0.35
Beijing Succeder PT	37	18.670	7.6	0.29
Roche Cobas PT Screen	33	16.784	5.3	0.19
Helena Thromboplastin L	30	26.840	14.2	0.87
Biolabo Bio-TP	24	24.775	27.2	1.72
Mindray/Longisland PT	23	22.665	12.3	0.72
Diagon, Dia-PT	23	20.696	14.2	0.77
HemosIL ReadiplasTin	21	15.819	3.4	0.15
Roche Cobas PT Rec	20	34.520	5.9	0.57
Sclavo PT	20	24.215	4.2	0.28
Stago Neoplastine R	20	18.098	5.5	0.28
Erba Prottime PT	20	22.085	12.3	0.76
Labitec PT	18	20.320	14.5	0.87
Tcoag TriniCLOT PT Excel S	19	41.595	13.4	1.60
Biolabo Bio-TP (Low ISI)	15	27.100	3.8	0.33



Analyte	Mean for Comparison	Your Result	SDI	RMSDI	%DEV	RM%DEV	TS	RMTS	Performance
D-Dimer (Pilot)	182.018	170.800	-0.29	Too Few	-6.2	Too Few	120	Too Few	
Fibrinogen	135.267	137.000	0.12	Too Few	1.3	Too Few	120	Too Few	
Antithrombin III activity	49.538	52.300	0.38	Too Few	5.6	Too Few	109	Too Few	
aPTT as a ratio	2.252	2.220	-0.13	Too Few	-1.4	Too Few	120	Too Few	
aPTT in seconds	57.688	54.300	-0.53	Too Few	-5.9	Too Few	107	Too Few	
PT as an INR	1.380	1.410	0.20	Too Few	2.2	Too Few	120	Too Few	
PT activity	56.834	56.000	-0.11	Too Few	-1.5	Too Few	120	Too Few	
PT in seconds	15.429	14.700	-0.61	Too Few	-4.7	Too Few	93	Too Few	

ORMSDI N/A

ORM%DEV N/A

ORMTS N/A

END OF REPORT