

Laboratorio Emotest s.r.l.

# COAGULATION

CYCLE 15 SAMPLE 7

## Explanation of codes used in this report

R - Results removed due to reconstitution error  
N - No result returned  
C - Result corrected

Authorised by: Sally Picton, RIQAS Manager

Issue No: 1

Issue Date: 19/07/2023

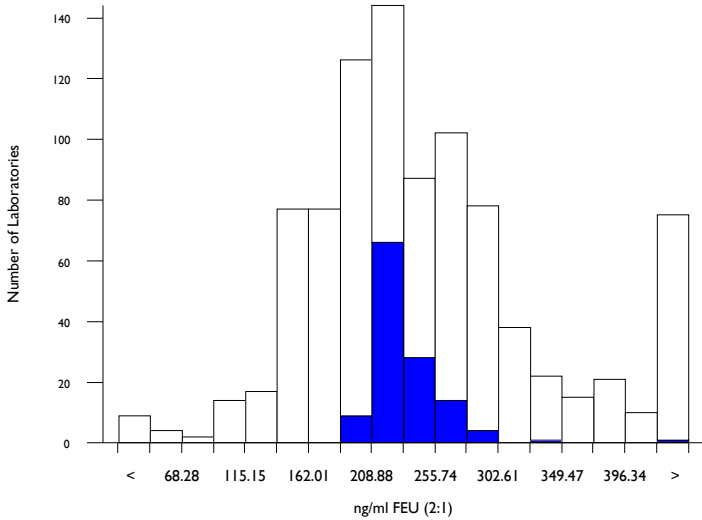
Randox Laboratories Limited  
55 Diamond Road  
CRUMLIN BT29 4QY  
Tel: +44 (0)28 9445 4399  
Fax: +44 (0)28 9445 4398  
Email: mail@riqas.com

# D-Dimer (Pilot), ng/ml FEU (2:1)

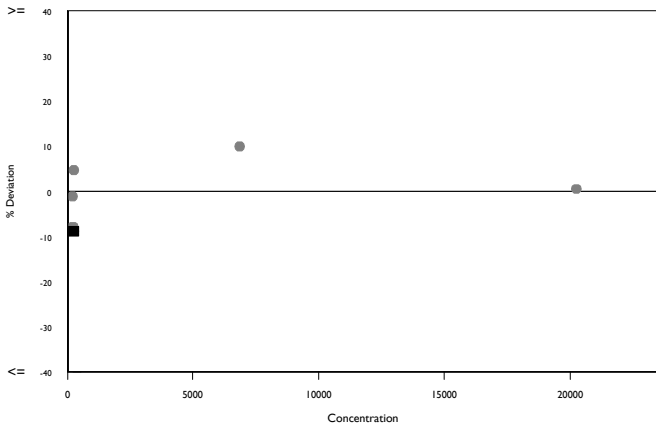
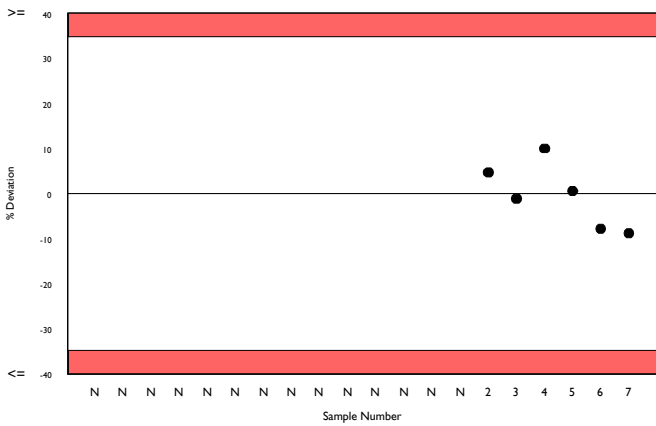
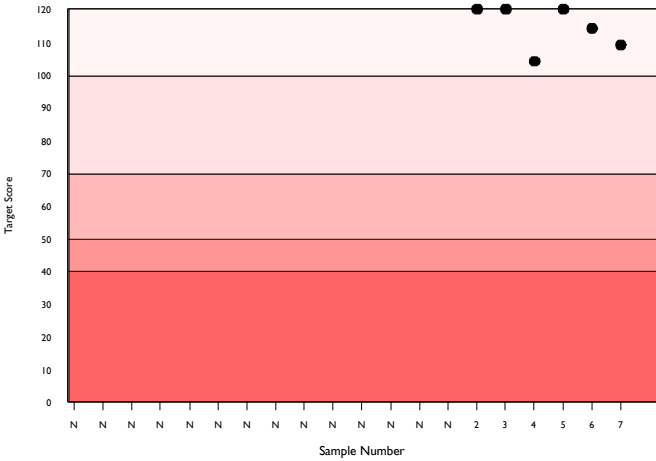
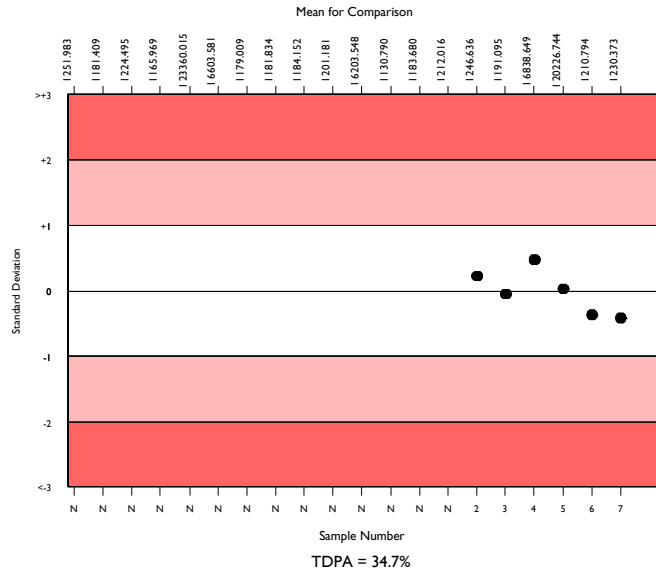
	N	Mean	CV%	U <sub>m</sub>	SDPA	Exc.
All Methods	823	232.314	26.9	2.72	49.01	229
Biomerieux VIDAS Exclusion II	116	230.373	7.5	2.01	48.60	7
Biomerieux Vidas/miniVidas/Vidas 3	116	230.373	7.5	2.01	48.60	7

▲ Your Result	209.970	SDI	-0.42
		RMSDI	Too Few
■ Mean for Comparison	230.373	TS	109
		RMTS	Too Few
		%DEV	-8.9
		RM%DEV	Too Few

Acceptable limits derived from Biological Variation	N/A
Acceptable limits of performance for RIQAS	34.70%



Method	N	Mean	CV%	U <sub>m</sub>
Siemens Innovance D-Dimer	182	173.346	11.8	1.89
HemosIL D-Dimer HS 500	157	251.586	17.9	4.50
Stago Sta Liatest D-Di/Plus	104	267.356	11.5	3.78
Biomerieux VIDAS Exclusion II	116	230.373	7.5	2.01
HemosIL D-Dimer	47	400.746	17.0	12.43
HemosIL D-Dimer HS	34	249.731	17.0	9.11
Roche Cobas D-DI 2	27	179.852	15.8	6.83
Roche Cobas D-DI2 citrated plasma	14	185.500	12.3	7.60
HemosIL D-Dimer 500	11	270.000	15.3	15.62
ImproGen D-Dimer	11	253.227	14.3	13.64
Abbott Architect/Alinity Quantia D-Dimer	11	376.244	15.2	21.50
Finicare D-Dimer	10	221.000	43.1	37.66
Diagon D-Dimer	9	136.000	26.0	14.75
Roche Cobas t511/t711 D-DI2	2	248.000	61.6	135.00
Kinetic Latex Turbidimetry D-Dimer	10	1038.000	33.5	137.56
Roche Integra D-DI 2	8	191.875	11.1	9.44
Siemens D-Dimer Plus	4	380.000	0.0	0.00
Roche Cobas h232 D-Dimer	5	200.000	0.0	0.00
SNIBE Maglumi analyser	4	293.000	4.5	8.28
Siemens Immulite 2000 D-Dimer	5	228.000	6.7	8.55
Getein Biotech Inc D-Dimer	4	301.500	26.3	49.62

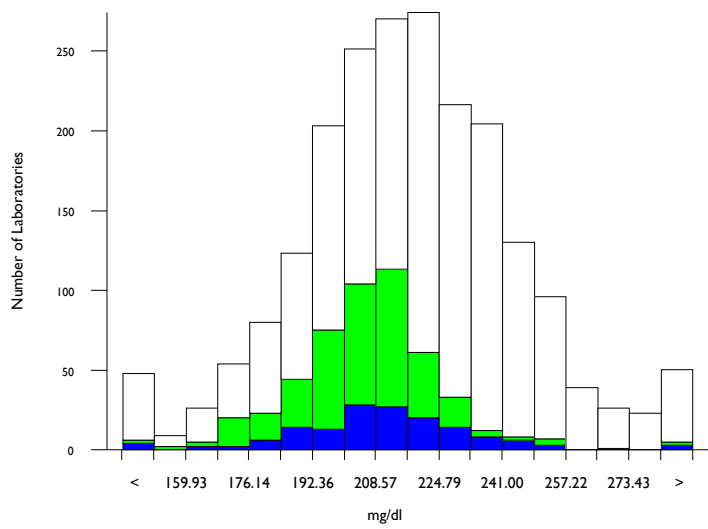


# Fibrinogen, mg/dl

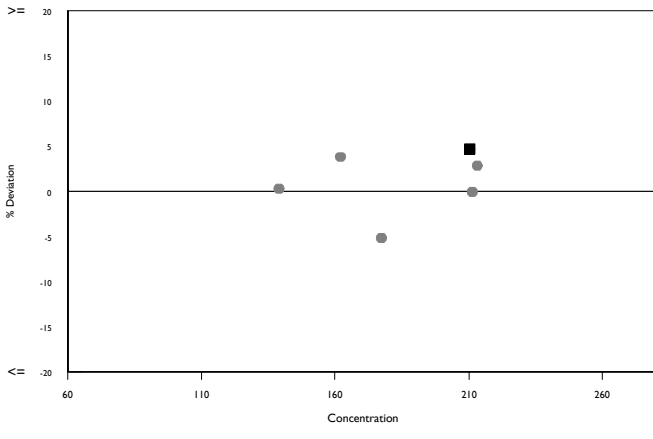
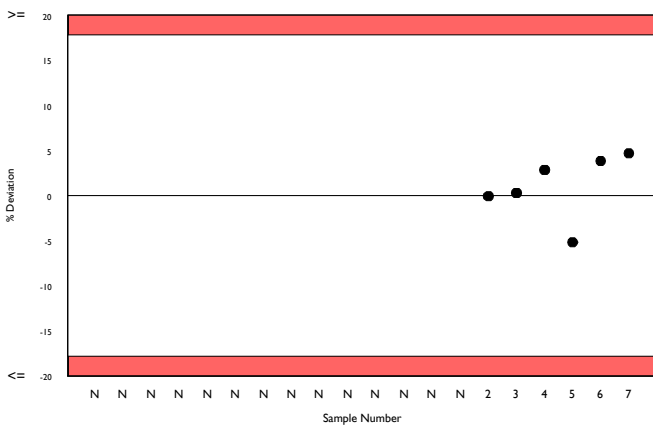
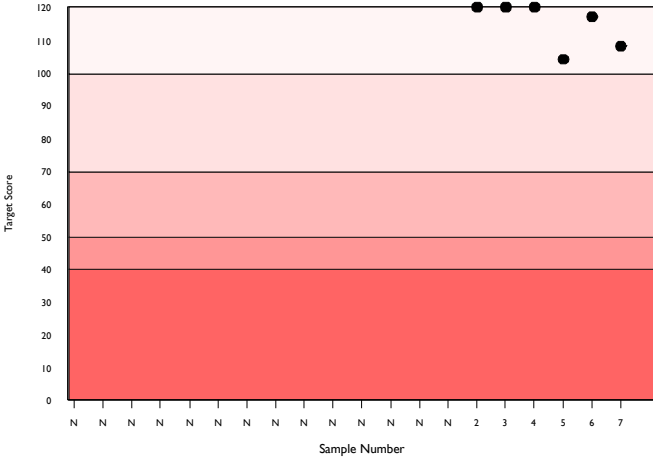
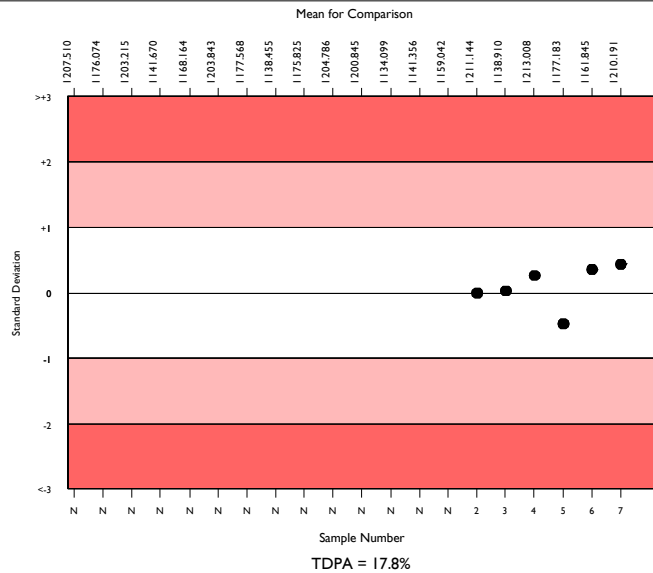
	N	Mean	CV%	U <sub>m</sub>	SDPA	Exc.
All Methods	1962	216.686	10.0	0.61	23.44	163
Siemens/Dade Thrombin	476	205.956	6.7	0.79	22.28	44
Sysmex CA 500/600 series	133	210.191	7.4	1.69	22.74	17

▲ Your Result	220.000	SDI	0.43
		RMSDI	Too Few
■ Mean for Comparison	210.191	TS	108
		RMTS	Too Few
		%DEV	4.7
		RM%DEV	Too Few

Acceptable limits derived from Biological Variation	N/A
Acceptable limits of performance for RIQAS	17.80%



Method	N	Mean	CV%	U <sub>m</sub>
Siemens/Dade Thrombin	476	205.956	6.7	0.79
Stago Fibrinogen/ Liquid-Fib	362	237.331	5.1	0.79
HemosL QFA (bovine thrombin)	246	206.950	9.0	1.48
HemosL Fibrinogen C	201	217.857	7.3	1.39
Siemens/Dade Multifibren U	179	212.031	7.4	1.47
HemosL RecombiPlasTin 2G	32	216.376	8.8	4.19
Diagon Dia-FIB	27	180.311	3.1	1.34
Sclavo Fibrinogen	31	223.939	8.3	4.15
Human Fibrinogen	23	237.348	9.8	6.04
Mindray/Longisland Fibrinogen	22	207.273	16.7	9.23
Biolabo Bio-Fibri	17	220.235	9.4	6.28
Roche Cobas t511/t711 Fibrinogen	20	231.400	4.8	3.10
HemosL PT-Fibrinogen HS Plus	20	227.735	11.3	7.19
Technoclone Fibrinogen	20	251.200	13.9	9.79
Helena Clauss Fibrinogen 100	18	246.378	8.6	6.23
Labitec Fibrinogen	15	226.793	11.0	8.08
Roche Cobas t411 Fibrinogen	13	219.923	4.8	3.63
Bio-Ksel Fibrinogen	14	231.357	7.6	5.84
Tcoag TriniCLOT Fibrinogen	14	226.086	13.9	10.53
Teco Teclot Fibrinogen	11	206.545	6.0	4.66
Yumizen G Fibrinogen	13	188.462	13.1	8.58

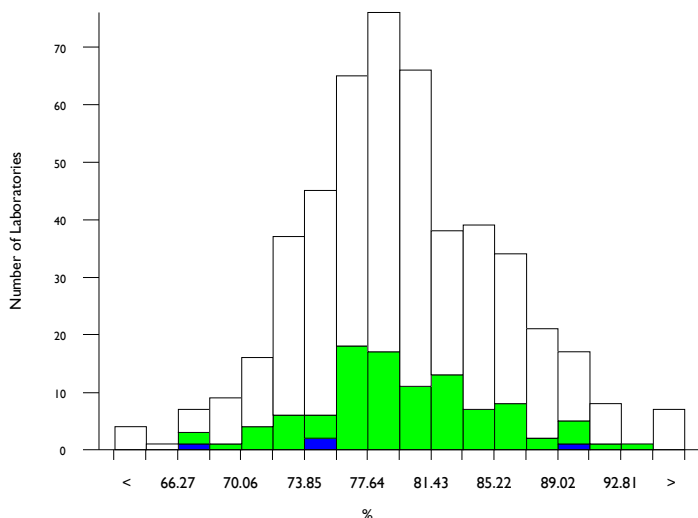


# Antithrombin III activity, %

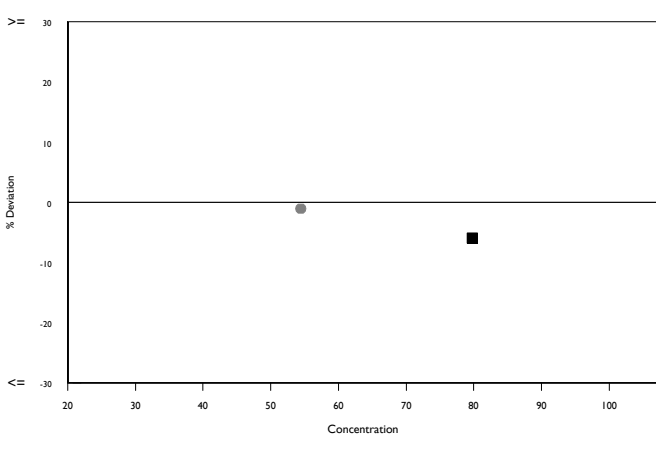
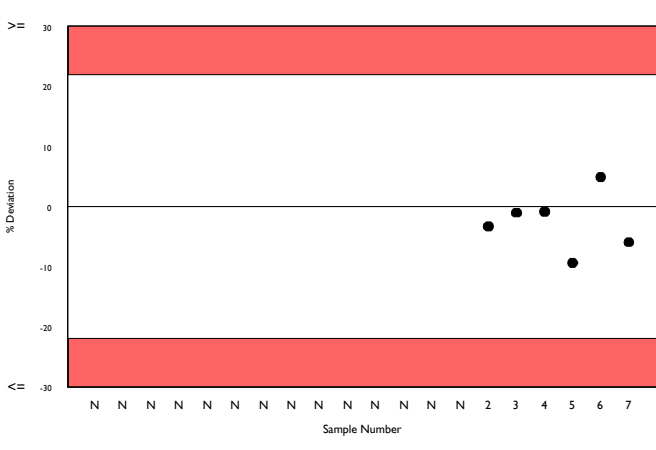
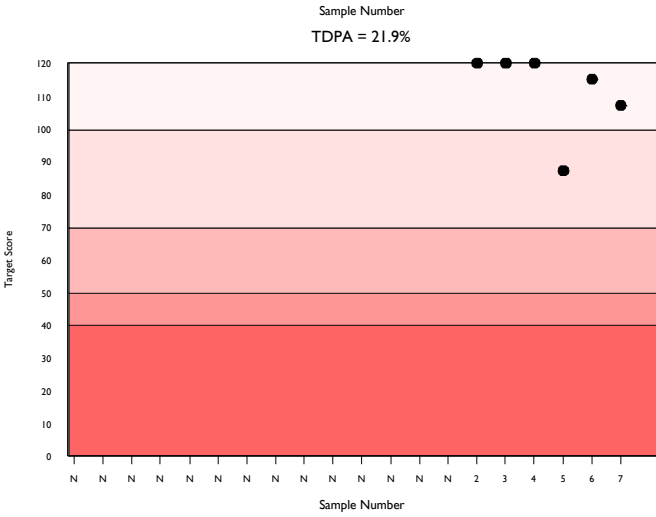
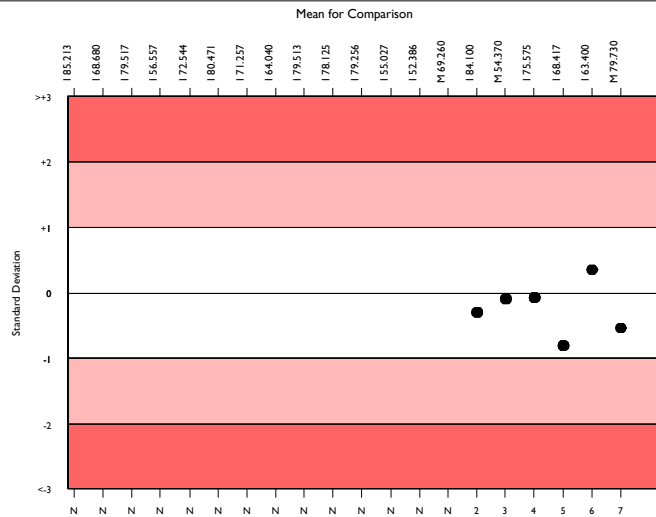
	N	Mean	CV%	U <sub>m</sub>	SDPA	Exc.
All Methods	463	79.544	6.4	0.29	8.71	28
Siemens/Dade Berichrom ATIII	96	79.730	5.8	0.59	8.73	7
Sysmex CA 500/600 series	4	76.875	12.3	5.92	10.29a	0

▲ Your Result	75.000	SDI	-0.54
		RMSDI	Too Few
■ Mean for Comparison	79.730	TS	107
		RMTS	Too Few
		%DEV	-5.9
		RM%DEV	Too Few

Acceptable limits derived from Biological Variation	N/A
Acceptable limits of performance for RIQAS	21.90%



Method	N	Mean	CV%	U <sub>m</sub>
HemosL Liquid Antithrombin	148	77.763	4.9	0.40
Siemens/Dade Berichrom ATIII	96	79.730	5.8	0.59
Siemens Innovance Antithrombin III	77	80.552	6.0	0.69
STACHrom ATIII	56	84.804	4.8	0.68
Sclavo ATIII	16	76.175	4.4	1.04
Siemens/Dade Antithrombin III	13	79.742	3.3	0.91
Roche Chromogenic Thrombin	13	78.146	7.7	2.08
Roche Antithrombin	11	74.909	3.9	1.11
HaemoDiagnostics Antithrombin III (Fxa)	6	78.372	8.2	3.29
Chromogenix Substrate	3	80.300	0.8	0.45
HemosL Lyophilised Antithrombin	3	77.467	9.1	5.08
Biodevice ATIII	2	87.800	12.6	9.75
Diagon ATIII	2	85.000	1.7	1.25

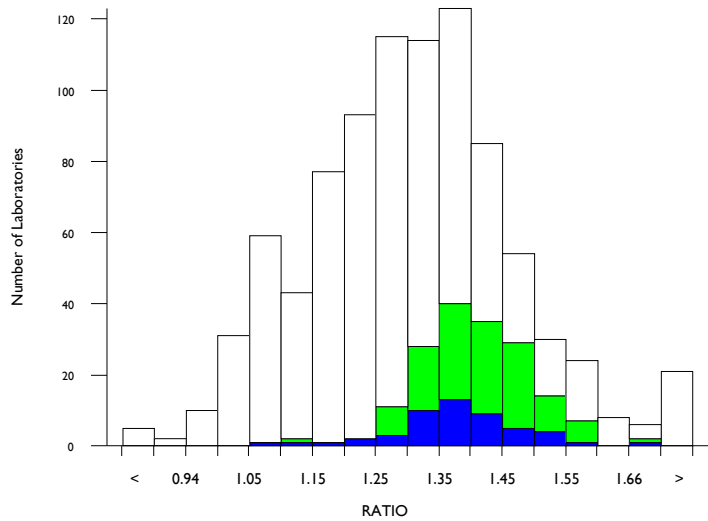


# aPTT as a ratio, RATIO

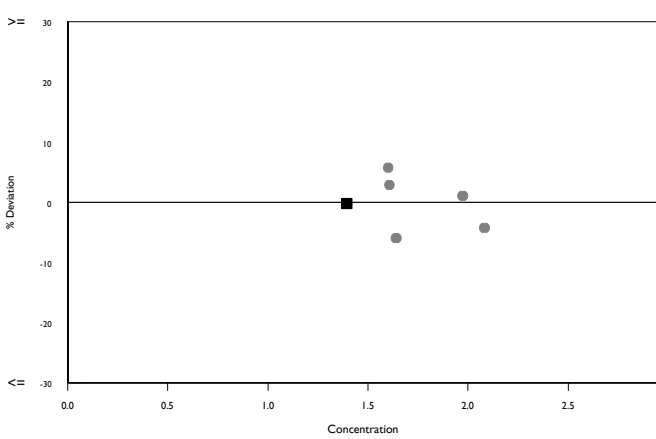
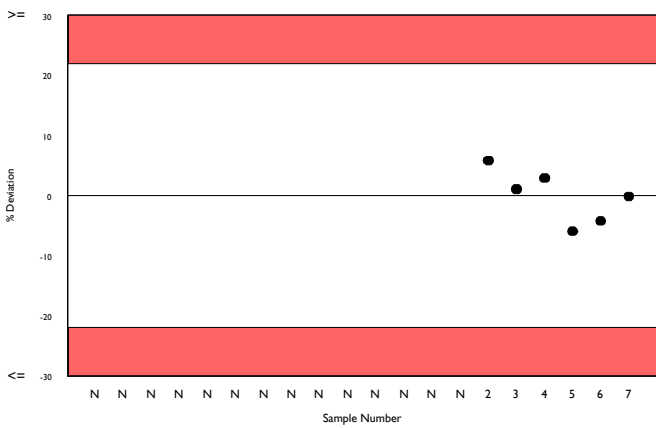
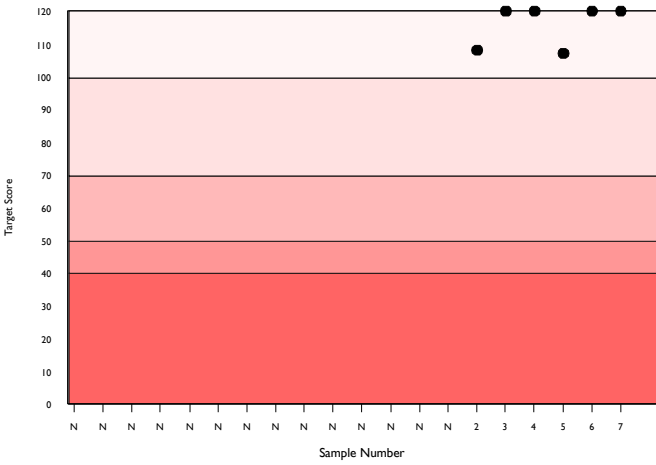
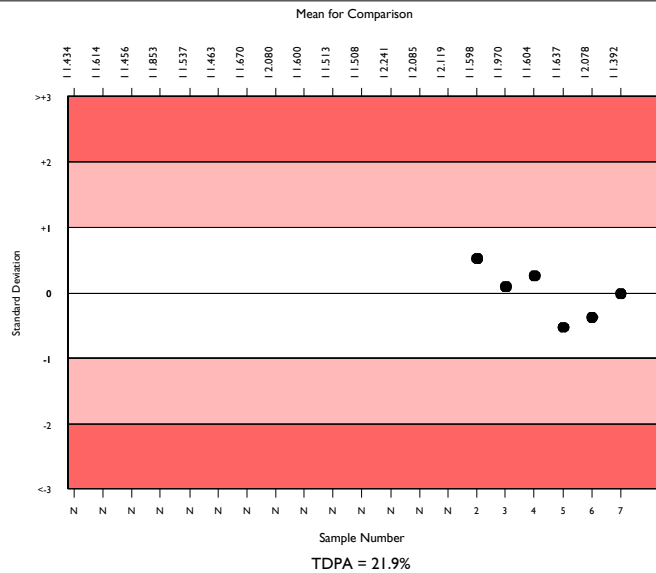
	N	Mean	CV%	U <sub>m</sub>	SDPA	Exc.
All Methods	849	1.304	10.4	0.01	0.15	51
Siemens/Dade Actin FS	160	1.412	5.1	0.01	0.16	12
Sysmex CA 500/600 series	46	1.392	5.4	0.01	0.16	5

▲ Your Result	1.390	SDI	-0.02
		RMSDI	Too Few
■ Mean for Comparison	1.392	TS	120
		RMTS	Too Few
		%DEV	-0.2
		RM%DEV	Too Few

Acceptable limits derived from Biological Variation	N/A
Acceptable limits of performance for RIQAS	21.90%



Method	N	Mean	CV%	U <sub>m</sub>
Siemens/Dade Actin FS	160	1.412	5.1	0.01
HemosIL Synthasil	145	1.269	7.5	0.01
HemosIL APTT-SP liquid	102	1.092	5.9	0.01
Siemens/Dade Actin FSL	89	1.263	4.3	0.01
Stago CK Prest	56	1.392	3.4	0.01
Siemens/Dade Pathromtin SL	54	1.453	9.2	0.02
Stago PTT Automate	38	1.219	5.0	0.01
Stago Cephascreen	21	1.296	7.1	0.03
Sclavo APTT-S	18	1.326	5.7	0.02
Helena aPTT Si L Minus	14	1.296	6.4	0.03
Human Hemostat APTT	13	1.353	7.2	0.03
Stago aPTT	11	1.298	3.6	0.02
Labitec aPTT	11	1.338	10.1	0.05
Tcoag TriniCLOT aPTT S	11	1.405	16.9	0.09
Erba Actime APTT	8	1.205	10.4	0.06
Bio-Ksel System APTTs	8	1.128	4.4	0.02
MTI Diagnostics APTT	7	1.426	16.5	0.11
Biolabo Bio-CK APTT	7	1.380	4.5	0.03
Diagon Dia-PTT Lyophilised	6	1.257	7.6	0.05
Media IVD aPTT	4	1.272	18.5	0.15
Teco TEClot APTT	5	1.306	9.8	0.07

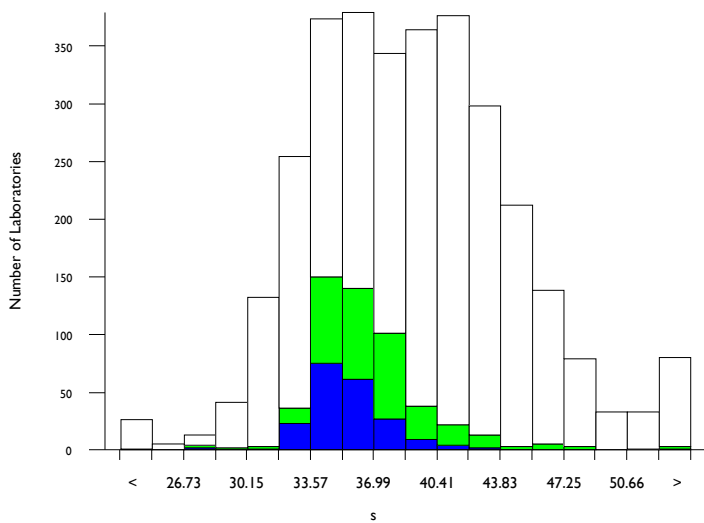


# aPTT in seconds, s

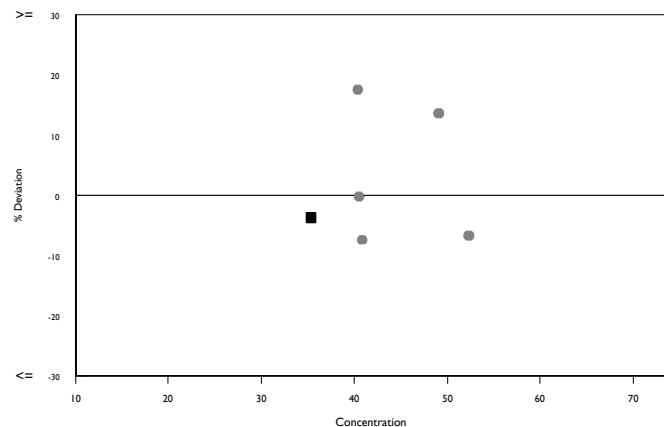
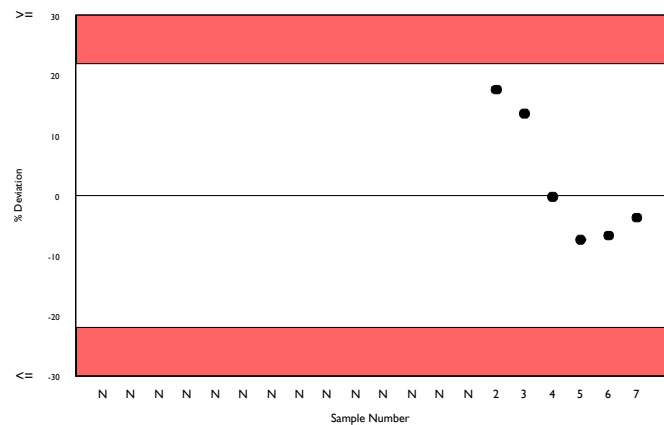
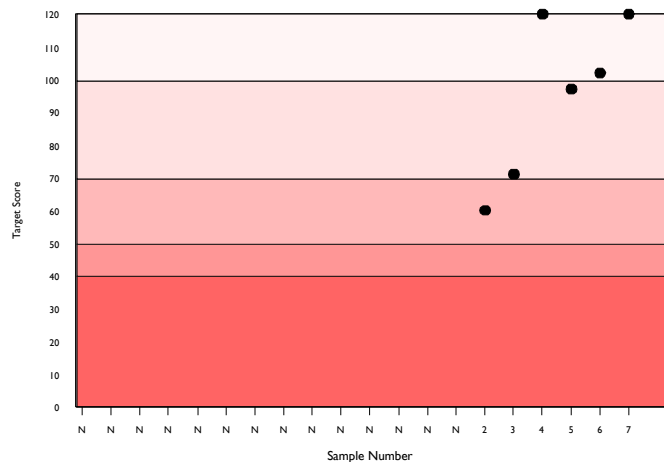
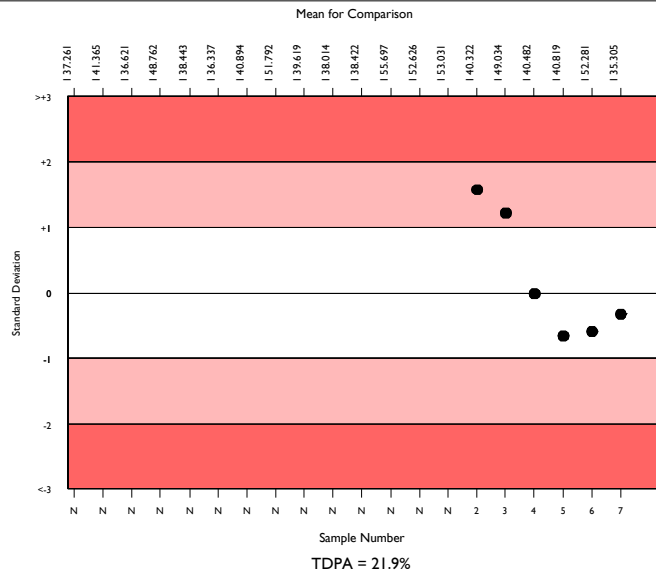
	N	Mean	CV%	U <sub>m</sub>	SDPA	Exc.
All Methods	3003	38.704	11.8	0.10	4.32	180
Siemens/Dade Actin FS	487	36.105	5.8	0.12	4.03	38
Sysmex CA 500/600 series	189	35.305	4.3	0.14	3.94	17

▲ Your Result	34.000	SDI	-0.33
		RMSDI	Too Few
■ Mean for Comparison	35.305	TS	120
		RMTS	Too Few
		%DEV	-3.7
		RM%DEV	Too Few

Acceptable limits derived from Biological Variation	N/A
Acceptable limits of performance for RIQAS	21.90%



Method	N	Mean	CV%	U <sub>m</sub>
Siemens/Dade Actin FS	487	36.105	5.8	0.12
HemosIL Synthasil	373	38.975	6.6	0.17
Stago CK Prest	348	43.045	6.0	0.17
Siemens/Dade Actin FSL	307	34.142	4.7	0.12
HemosIL APTT-SP liquid	244	32.093	5.2	0.13
Siemens/Dade Pathromtin SL	219	46.183	8.0	0.31
Stago PTT Automate	143	41.791	4.5	0.19
Stago aPTT	80	41.417	6.7	0.39
Stago Cephascreen	73	41.395	4.4	0.27
Human Hemostat APTT	48	38.156	7.3	0.50
Beijing Succeder aPTT	34	44.844	7.0	0.68
Sclavo APTT-S	31	37.842	4.0	0.34
Helena aPTT Si L Minus	26	36.035	4.6	0.40
Diagon Dia-PTT Liquid	27	40.152	8.6	0.83
Biolabo Bio-CK APTT	26	40.503	8.9	0.88
Cobas aPTT MedS	25	41.278	4.7	0.49
Roche Cobas APTT	26	40.054	5.6	0.55
Mindray/Longisland APTT	25	39.914	9.3	0.93
Labitec aPTT	22	41.117	6.1	0.67
Siemens/Dade Actin	22	38.150	10.3	1.05
Teco TEClot APTT	19	40.300	5.0	0.58

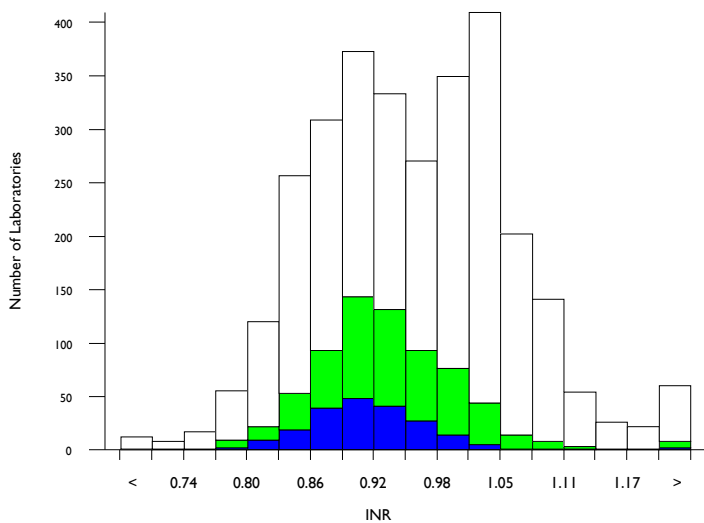


# PT as an INR, INR

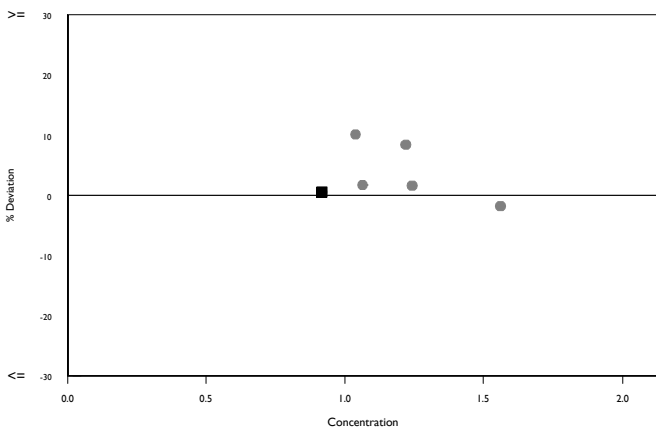
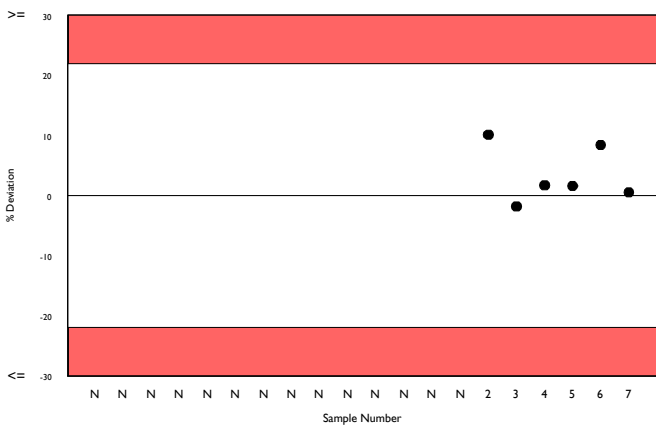
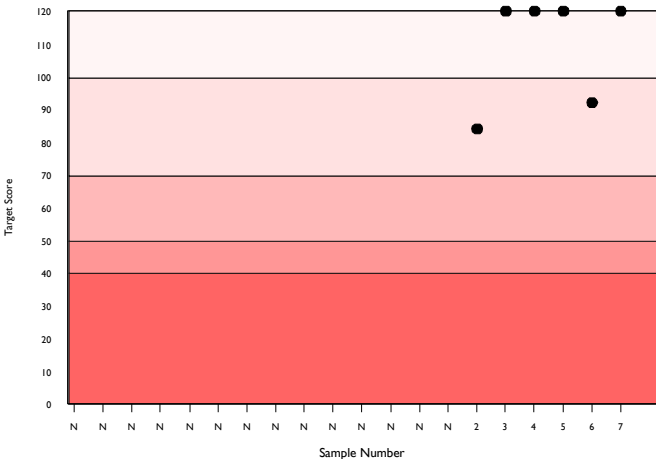
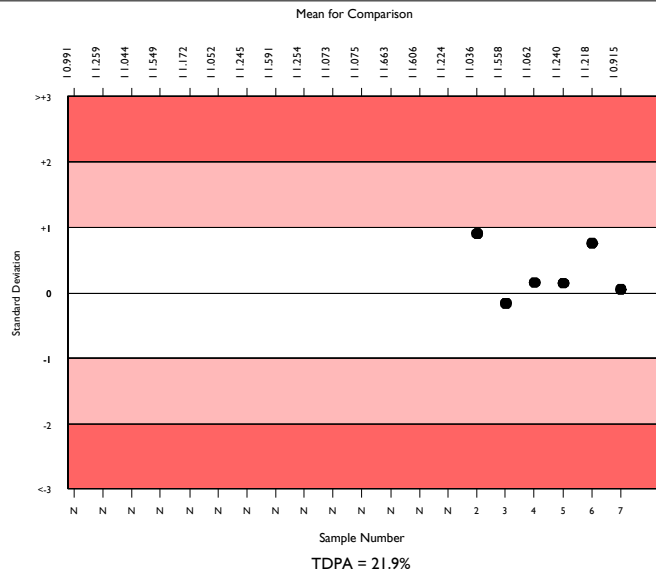
	N	Mean	CV%	U <sub>m</sub>	SDPA	Exc.
All Methods	2867	0.958	8.6	0.00	0.11	151
Siemens/Dade Thromborel S	655	0.931	5.7	0.00	0.10	48
Sysmex CA 500/600 series	195	0.915	4.9	0.00	0.10	18

▲ Your Result	0.920	SDI	0.05
		RMSDI	Too Few
■ Mean for Comparison	0.915	TS	120
		RMTS	Too Few
		%DEV	0.5
		RM%DEV	Too Few

Acceptable limits derived from Biological Variation	N/A
Acceptable limits of performance for RIQAS	21.90%



Method	N	Mean	CV%	U <sub>m</sub>
Siemens/Dade Thromborel S	655	0.931	5.7	0.00
HemosIL RecombiPlasTin 2G	548	0.887	4.5	0.00
Stago STA-NeoPTimal	418	1.033	4.7	0.00
Siemens/Dade Innovin	406	1.038	3.8	0.00
Stago STA Neoplastine CI Plus	155	0.988	5.8	0.01
Human Thromboplastin	43	0.883	7.8	0.01
HemosIL PT-Fibrinogen HS Plus	40	0.866	5.7	0.01
Roche Cobas PT Screen	37	1.008	4.5	0.01
Beijing Succeder PT	32	0.828	6.9	0.01
Sclavo PT	31	0.873	4.9	0.01
Diagon, Dia-PT	30	0.910	7.8	0.02
Helena Thromboplastin L	27	0.929	8.9	0.02
Stago Neoplastine R	26	0.943	5.7	0.01
Mindray/Longisland PT	24	0.975	5.3	0.01
Roche Cobas PT Rec	20	1.043	1.6	0.00
HemosIL ReadiplasTin	20	0.910	5.3	0.01
Biolabo Bio-TP (Low ISI)	20	1.063	5.7	0.02
Labitec PT	18	1.002	12.0	0.04
Tcoag TriniCLOT PT Excel S	17	1.144	4.8	0.02
Bio-Ksel PT Plus	14	0.881	3.0	0.01
Teco TEClot PT-S	14	0.866	11.2	0.03

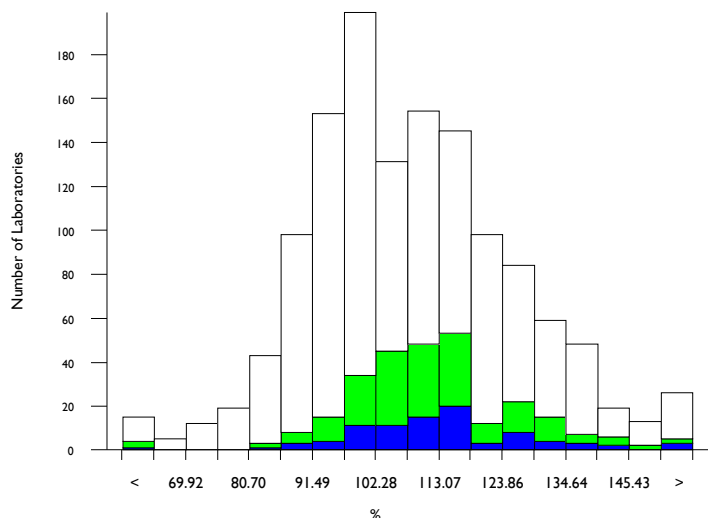


# PT activity, %

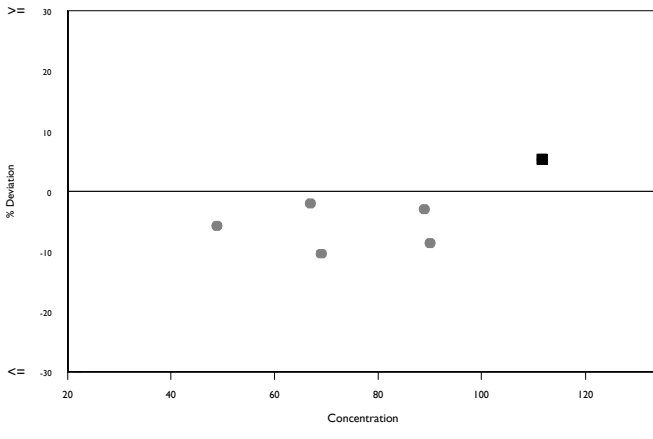
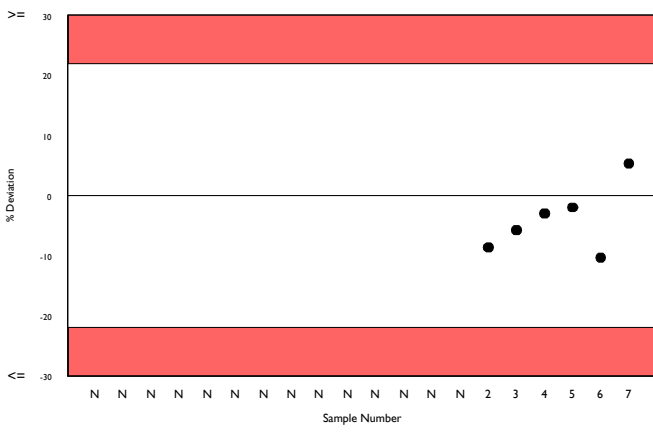
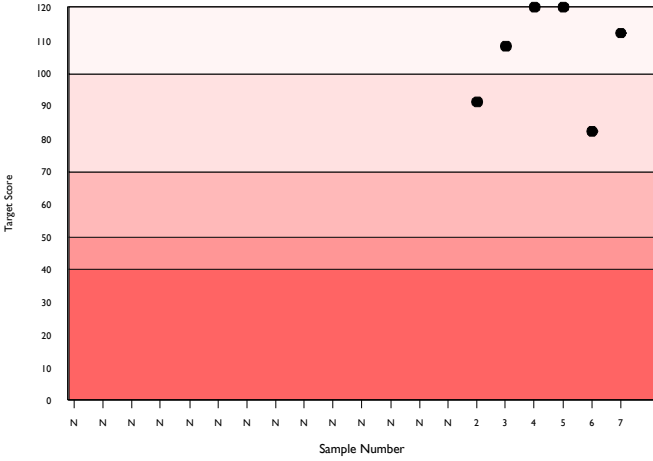
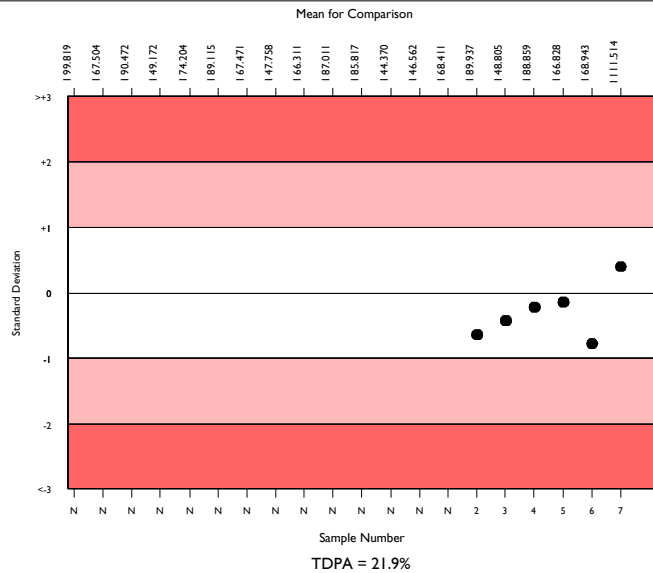
	N	Mean	CV%	U <sub>m</sub>	SDPA	Exc.
All Methods	1236	107.679	13.4	0.51	14.34	99
Siemens/Dade Thromborel S	257	111.013	9.9	0.86	14.78	27
Sysmex CA 500/600 series	81	111.514	9.9	1.54	14.85	12

▲ Your Result	117.400	SDI	0.40
		RMSDI	Too Few
■ Mean for Comparison	111.514	TS	112
		RMST	Too Few
		%DEV	5.3
		RM%DEV	Too Few

Acceptable limits derived from Biological Variation	N/A
Acceptable limits of performance for RIQAS	21.90%



Method	N	Mean	CV%	U <sub>m</sub>
Siemens/Dade Thromborel S	257	111.013	9.9	0.86
Stago STA-NeoPTimal	241	95.338	6.5	0.50
HemosIL RecombiPlasTin 2G	233	119.096	7.6	0.74
Siemens/Dade Innovin	90	95.627	5.5	0.69
HemosIL PT-Fibrinogen HS Plus	37	128.541	10.6	2.79
Stago STA Neoplastine CI Plus	33	97.733	6.7	1.42
Human Thromboplastin	27	120.326	13.3	3.85
Beijing Succeder PT	22	135.978	10.6	3.85
Sclavo PT	21	119.252	6.0	1.96
Helena Thromboplastin L	20	113.574	6.2	1.97
Mindray/Longisland PT	18	101.097	7.7	2.28
Stago Neoplastine R	15	112.533	11.9	4.33
Biolabo Bio-TP (Low ISI)	17	92.258	10.2	2.84
Labitec PT	16	94.193	17.2	5.07
Diagon, Dia-PT	14	121.779	14.2	5.77
Roche Cobas PT Screen	12	107.775	7.4	2.88
MTI Diagnostics Prothrombin Time	10	103.711	5.5	2.25
Tcoag TriniCLOT PT Excel S	12	75.592	7.0	1.91
Biolabo Bio-TP	9	99.078	12.6	5.19
Erba Protine PT	9	108.533	9.2	4.18
HemosIL ReadiPlasTin	9	111.533	4.6	2.14



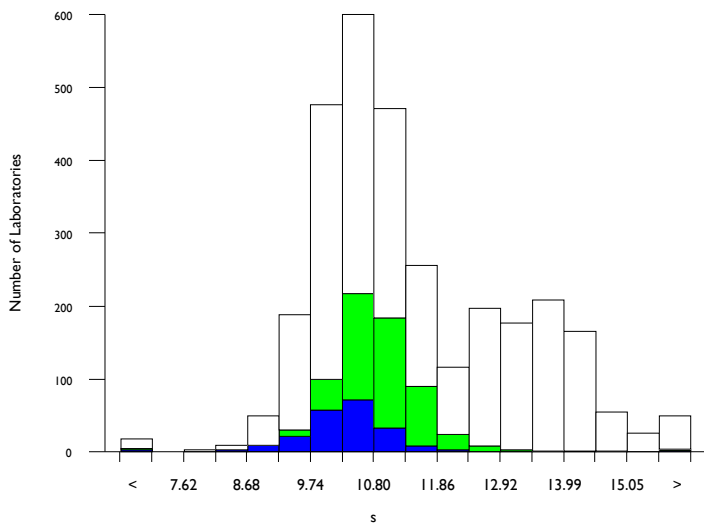


# PT in seconds, s

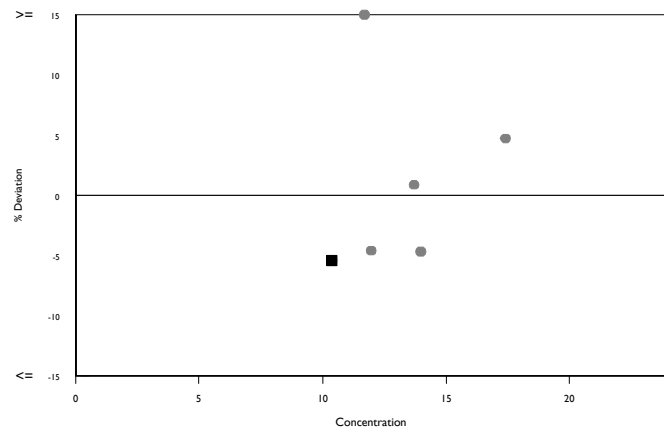
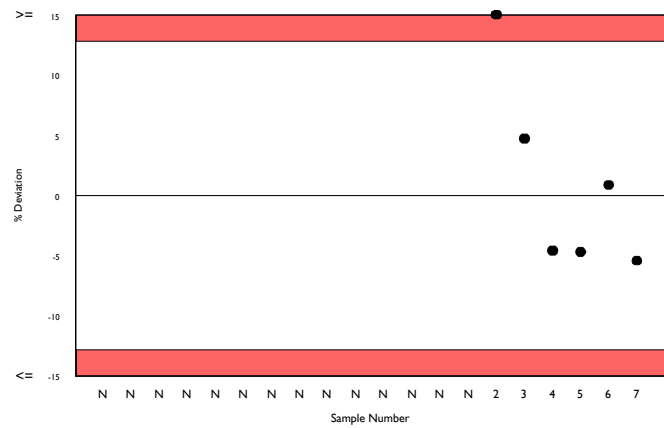
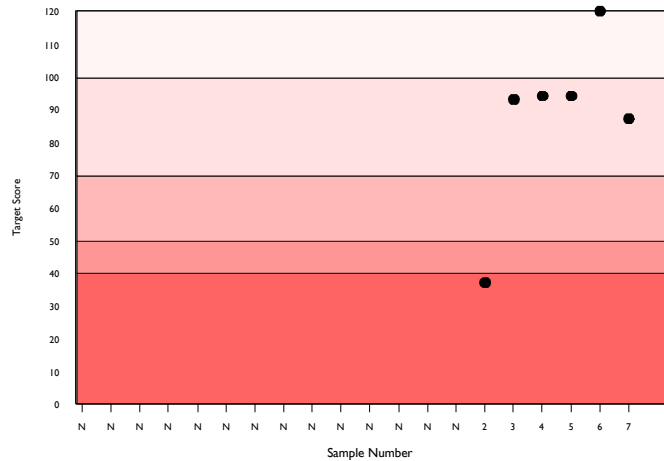
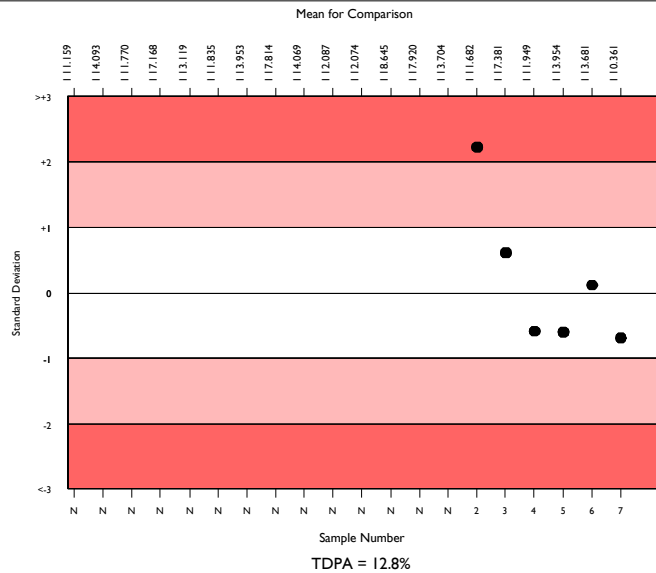
	N	Mean	CV%	U <sub>m</sub>	SDPA	Exc.
All Methods	2913	11.338	12.5	0.03	0.88	153
Siemens/Dade Thromborel S	638	10.775	5.4	0.03	0.84	41
Sysmex CA 500/600 series	191	10.361	5.1	0.05	0.81	20

▲ Your Result	9.800	SDI	-0.70
		RMSDI	Too Few
■ Mean for Comparison	10.361	TS	87
		RMST	Too Few
		%DEV	-5.4
		RM%DEV	Too Few

Acceptable limits derived from Biological Variation	N/A
Acceptable limits of performance for RIQAS	12.80%



Method	N	Mean	CV%	U <sub>m</sub>
Siemens/Dade Thromborel S	638	10.775	5.4	0.03
HemosIL RecombiPlasTin 2G	531	10.067	3.3	0.02
Siemens/Dade Innovin	418	10.833	4.3	0.03
Stago STA-NeoPTimal	416	13.732	4.1	0.03
Stago STA Neoplastine CI Plus	174	13.047	4.9	0.06
Human Thromboplastin	51	11.272	6.7	0.13
HemosIL PT-Fibrinogen HS Plus	40	12.427	3.9	0.09
Roche Cobas PT Screen	37	10.466	3.6	0.08
Beijing Succeder PT	32	10.784	6.6	0.16
Helena Thromboplastin L	26	11.727	5.1	0.15
Diagon, Dia-PT	25	11.132	4.2	0.12
Mindray/Longisland PT	26	11.672	7.1	0.20
Sclavo PT	24	11.675	4.3	0.13
HemosIL ReadiPlasTin	21	10.000	2.5	0.07
Roche Cobas PT Rec	19	9.186	1.7	0.04
Biolabo Bio-TP	20	13.100	11.8	0.43
Labitec PT	21	11.687	10.2	0.32
Stago Neoplastine R	17	12.129	3.6	0.13
Tcoag TriniCLOT PT Excel S	19	13.847	4.5	0.18
Biolabo Bio-TP (Low ISI)	17	14.071	3.8	0.16
Bio-Ksel PT Plus	15	9.553	5.1	0.16



Analyte	Mean for Comparison	Your Result	SDI	RMSDI	%DEV	RM%DEV	TS	RMTS	Performance
D-Dimer (Pilot)	230.373	209.970	-0.42	Too Few	-8.9	Too Few	109	Too Few	
Fibrinogen	210.191	220.000	0.43	Too Few	4.7	Too Few	108	Too Few	
Antithrombin III activity	79.730	75.000	-0.54	Too Few	-5.9	Too Few	107	Too Few	
aPTT as a ratio	1.392	1.390	-0.02	Too Few	-0.2	Too Few	120	Too Few	
aPTT in seconds	35.305	34.000	-0.33	Too Few	-3.7	Too Few	120	Too Few	
PT as an INR	0.915	0.920	0.05	Too Few	0.5	Too Few	120	Too Few	
PT activity	111.514	117.400	0.40	Too Few	5.3	Too Few	112	Too Few	
PT in seconds	10.361	9.800	-0.70	Too Few	-5.4	Too Few	87	Too Few	

ORMSDI N/A

ORM%DEV N/A

ORMTS N/A

END OF REPORT