

Laboratorio Emotest s.r.l.

COAGULATION

CYCLE 15 SAMPLE 6

Explanation of codes used in this report

R - Results removed due to reconstitution error
N - No result returned
C - Result corrected

Authorised by: Stephen Doherty, RIQAS Manager

Issue No: 1

Issue Date: 21/06/2023

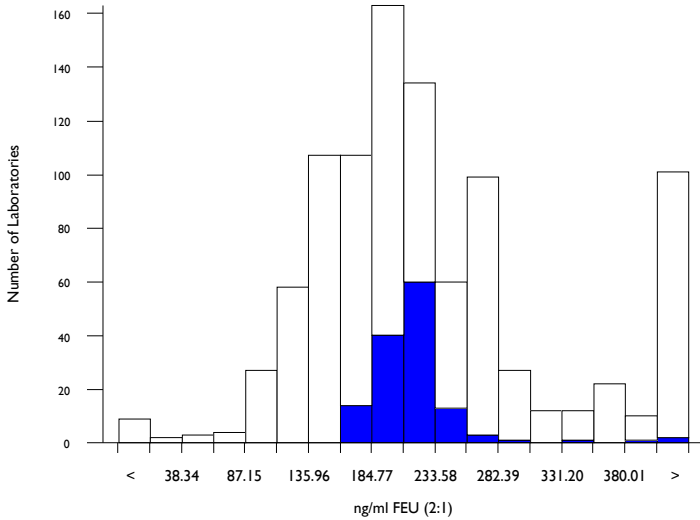
Randox Laboratories Limited
55 Diamond Road
CRUMLIN BT29 4QY
Tel: +44 (0)28 9445 4399
Fax: +44 (0)28 9445 4398
Email: mail@riqas.com

D-Dimer (Pilot), ng/ml FEU (2:1)

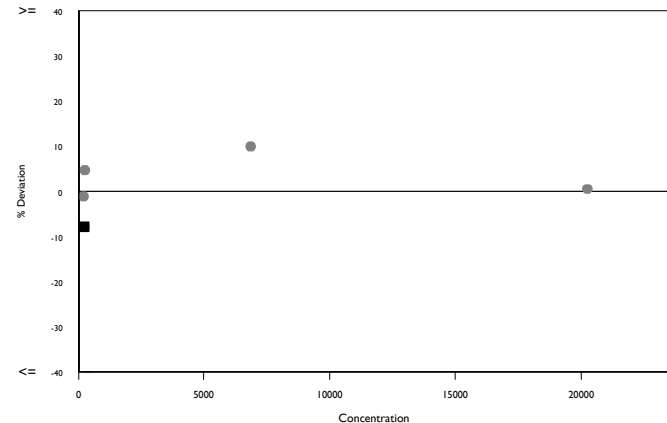
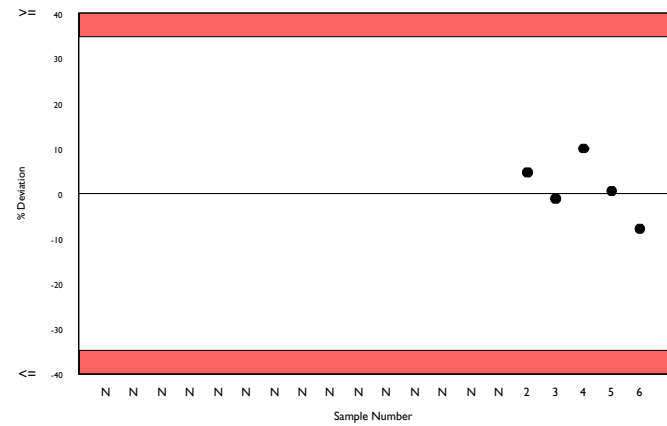
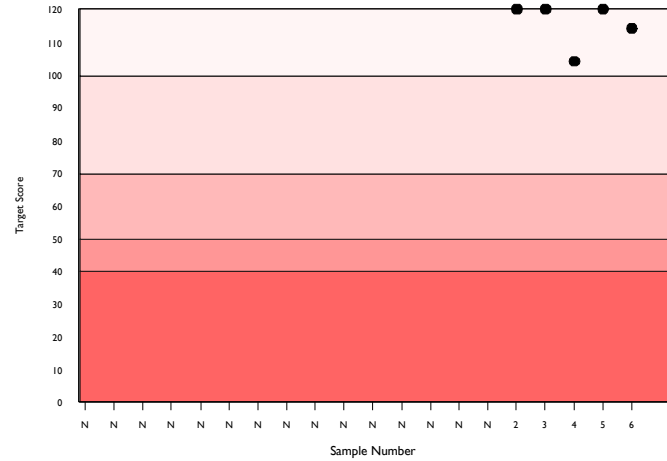
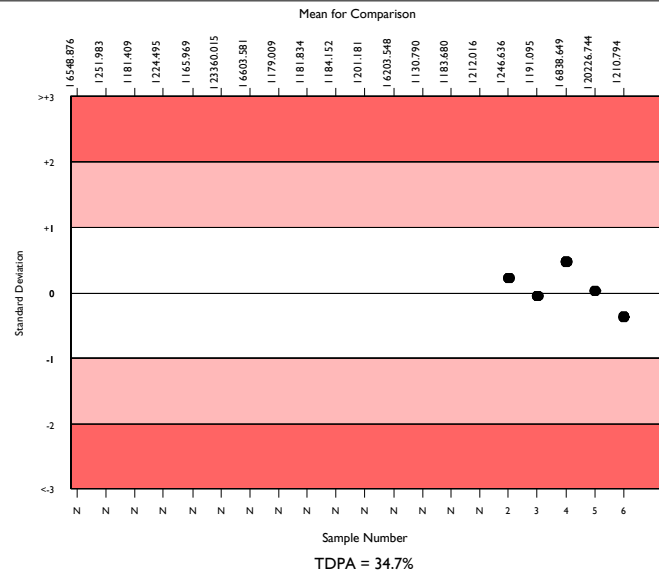
	N	Mean	CV%	U _m	SDPA	Exc.
All Methods	844	209.179	31.1	2.80	44.13	299
Biomerieux VIDAS Exclusion II	124	210.794	8.6	2.02	44.47	11
Biomerieux Vidas/miniVidas/Vidas 3	124	210.794	8.6	2.02	44.47	11

▲ Your Result	194.230	SDI	-0.37
		RMSDI	Too Few
■ Mean for Comparison	210.794	TS	114
		RMTS	Too Few
		%DEV	-7.9
		RM%DEV	Too Few

Acceptable limits derived from Biological Variation	N/A
Acceptable limits of performance for RIQAS	34.70%



Method	N	Mean	CV%	U _m
Siemens Innovance D-Dimer	180	160.031	17.5	2.62
HemosIL D-Dimer HS 500	148	209.019	19.7	4.23
Stago Sta Liatest D-DI/Plus	120	257.968	13.6	4.01
Biomerieux VIDAS Exclusion II	124	210.794	8.6	2.02
HemosIL D-Dimer	56	461.661	19.0	14.68
HemosIL D-Dimer HS	45	202.911	20.1	7.59
Roche Cobas D-DI 2	27	168.296	16.8	6.81
Roche Cobas D-DI2 citrated plasma	12	150.083	9.6	5.22
Abbott Architect/Alinity Quantia D-Dimer	12	413.515	7.9	11.76
HemosIL D-Dimer 500	10	180.600	24.0	17.16
ImproGen D-Dimer	12	222.400	21.4	17.19
Roche Cobas t511/t711 D-DI2	3	153.333	27.2	30.05
Diagon D-Dimer	8	135.300	30.8	18.39
Finicare D-Dimer	9	155.556	31.3	20.32
Kinetic Latex Turbidimetry D-Dimer	7	497.143	11.0	25.84
Siemens Immulite 2000 D-Dimer	5	167.400	19.7	18.39
Siemens D-Dimer Plus	3	366.667	6.3	16.67
Helena Auto-Red D-Dimer	7	162.000	29.2	22.37
Roche Integra D-DI 2	6	158.500	24.7	19.99
Roche Cobas h232 D-Dimer	3	200.000	0.0	0.00
SNIBE Maglumi analyser	5	371.400	11.0	22.84

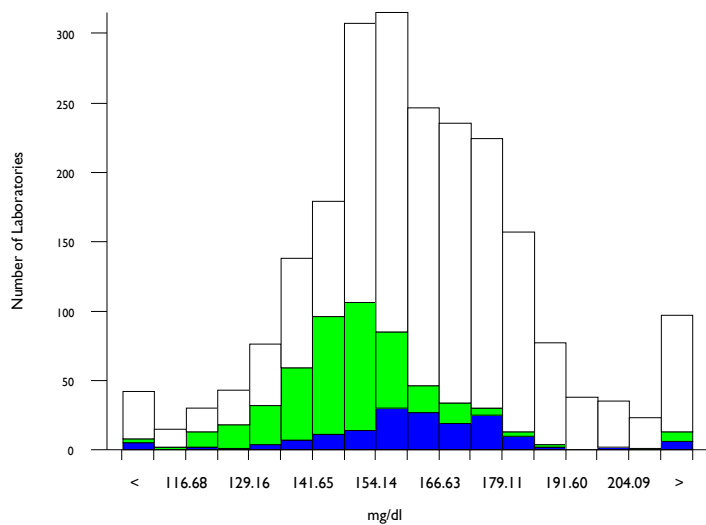


Fibrinogen, mg/dl

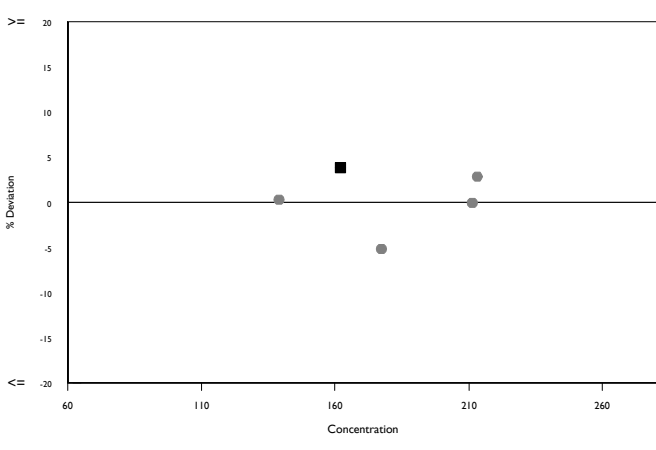
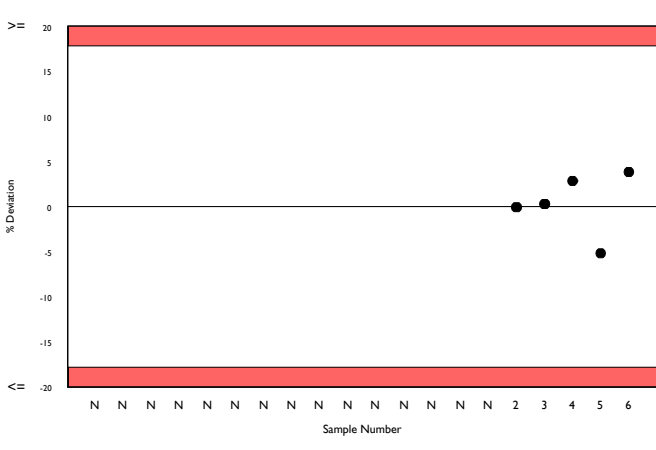
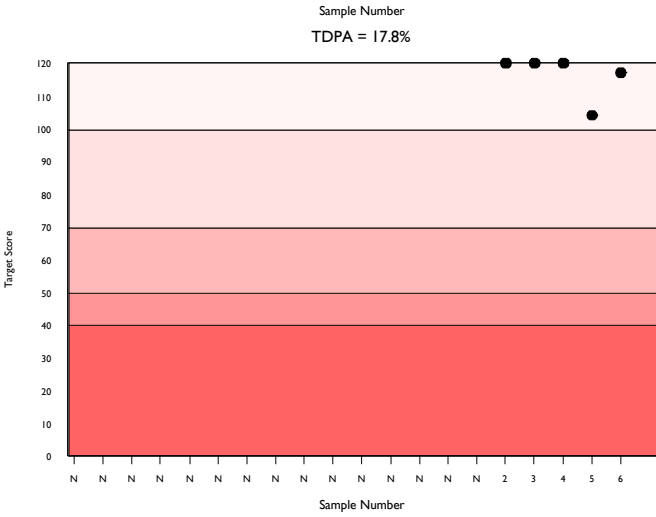
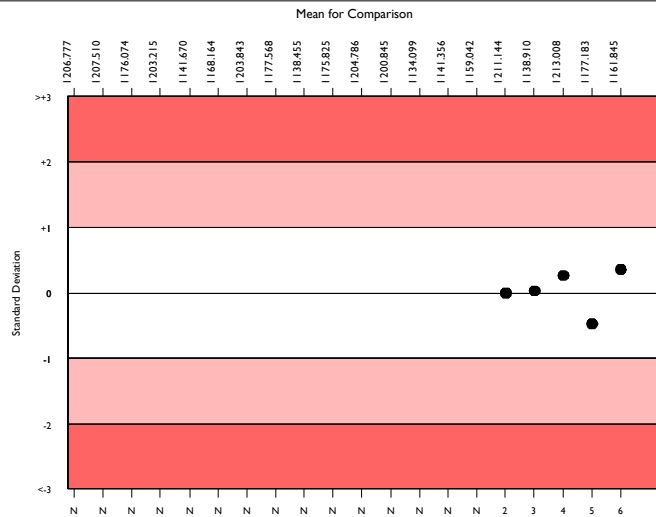
	N	Mean	CV%	U _m	SDPA	Exc.
All Methods	2084	160.387	10.4	0.45	17.35	193
Siemens/Dade Thrombin	528	151.063	8.8	0.72	16.34	34
Sysmex CA 500/600 series	147	161.845	7.6	1.26	17.51	18

▲ Your Result	168.000	SDI	0.35
		RMSDI	Too Few
■ Mean for Comparison	161.845	TS	117
		RMTS	Too Few
		%DEV	3.8
		RM%DEV	Too Few

Acceptable limits derived from Biological Variation	N/A
Acceptable limits of performance for RIQAS	17.80%



Method	N	Mean	CV%	U _m
Siemens/Dade Thrombin	528	151.063	8.8	0.72
Stago Fibrinogen/ Liquid-Fib	385	172.855	5.2	0.57
HemosIL QFA (bovine thrombin)	243	157.954	10.1	1.27
HemosIL Fibrinogen C	225	160.125	6.5	0.87
Siemens/Dade Multifibrin U	210	160.664	9.7	1.34
Sclavo Fibrinogen	38	167.279	8.6	2.93
HemosIL RecombiPlasTin 2G	30	143.081	8.7	2.85
Diagon Dia-FIB	28	138.875	8.4	2.76
Biolabo Bio-Fibri	23	168.630	11.7	5.16
Mindray/Longisland Fibrinogen	22	158.455	10.0	4.22
Human Fibrinogen	20	188.191	6.8	3.59
Roche Cobas t511/t711 Fibrinogen	22	174.955	10.0	4.67
Helena Claus Fibrinogen 100	20	181.125	9.8	4.95
HemosIL PT-Fibrinogen HS Plus	20	167.150	8.6	4.03
Technoclone Fibrinogen	17	202.941	15.8	9.74
Labitec Fibrinogen	14	164.636	9.7	5.36
Tcoag TriniCLOT Fibrinogen	14	176.643	6.3	3.71
Yumizen G Fibrinogen	14	154.429	11.4	5.87
Bio-Ksel Fibrinogen	13	180.308	8.1	5.06
Roche Cobas t411 Fibrinogen	13	174.615	7.2	4.34
Stago STA Fibri-Prest Automate	10	168.500	4.3	2.85

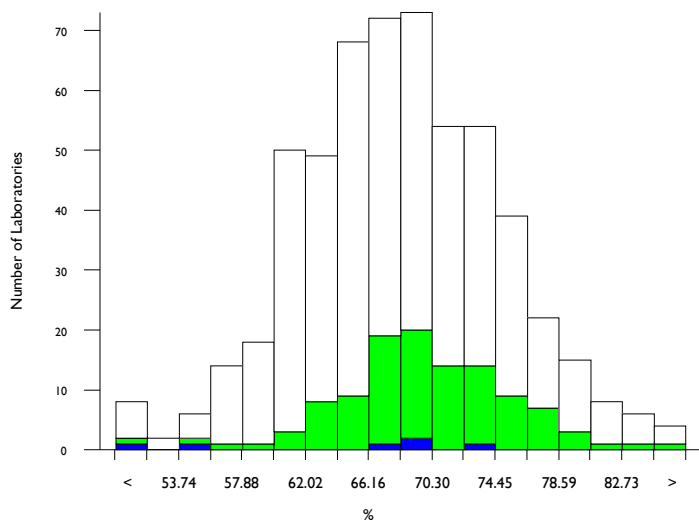


Antithrombin III activity, %

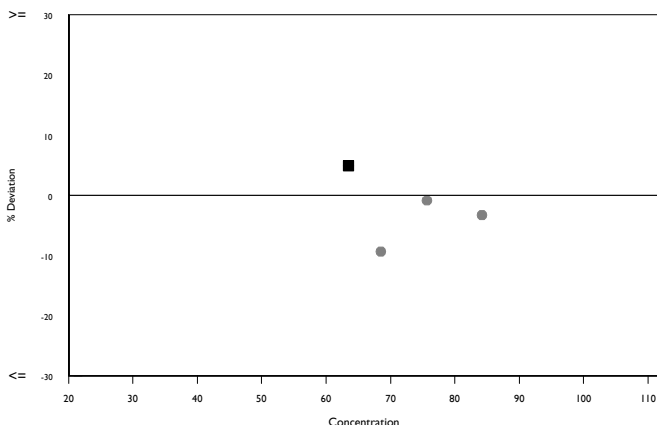
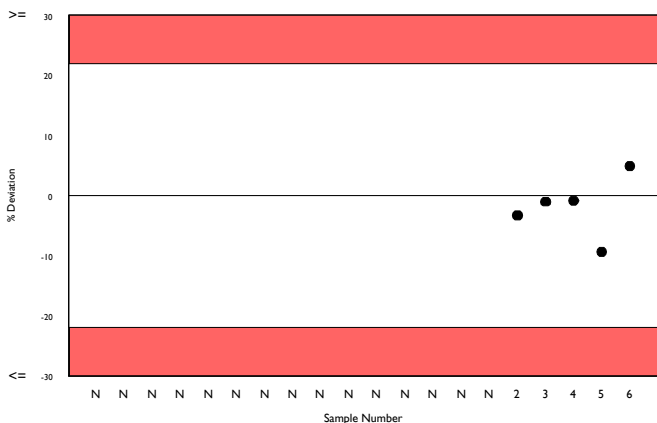
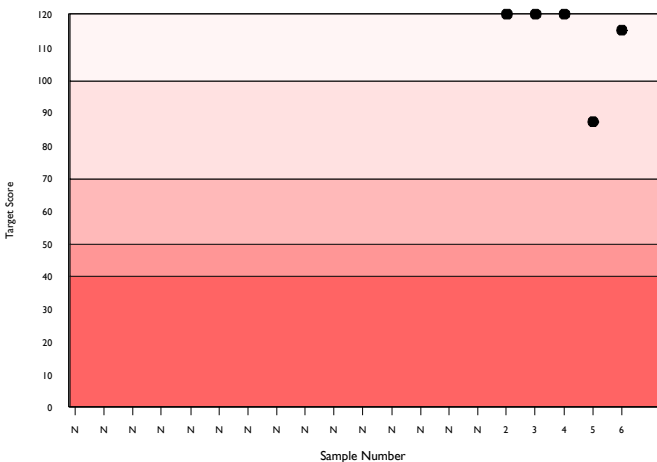
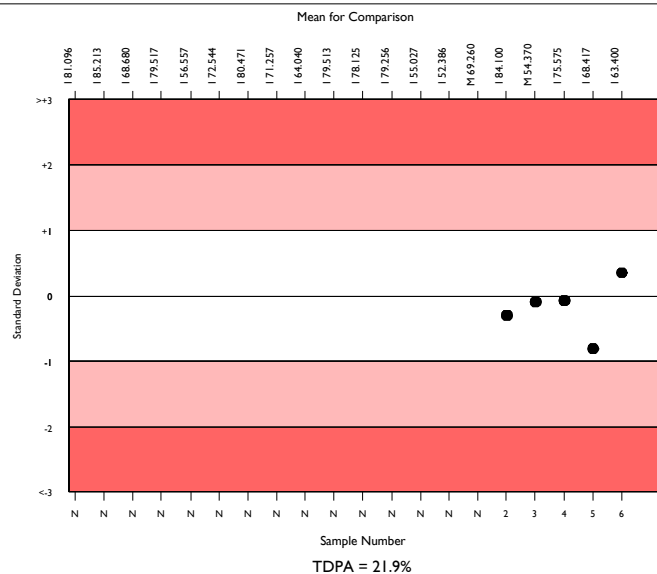
	N	Mean	CV%	U _m	SDPA	Exc.
All Methods	530	68.238	8.1	0.30	7.47	32
Siemens/Dade Berichrom ATIII	106	70.047	6.4	0.54	7.67	9
Sysmex CA 500/600 series	6	63.400	17.3	5.61	8.93a	0

▲ Your Result	66.500	SDI	0.35
		RMSDI	Too Few
■ Mean for Comparison	63.400	TS	115
		RMTS	Too Few
		%DEV	4.9
		RM%DEV	Too Few

Acceptable limits derived from Biological Variation	N/A
Acceptable limits of performance for RIQAS	21.90%



Method	N	Mean	CV%	U _m
HemosL Liquid Antithrombin	176	64.755	7.5	0.46
Siemens/Dade Berichrom ATIII	106	70.047	6.4	0.54
Siemens Innovance Antithrombin III	83	69.155	7.3	0.69
STACHrom ATIII	70	72.155	5.7	0.61
Sclavo ATIII	22	67.641	6.8	1.22
Roche Chromogenic Thrombin	12	67.517	3.2	0.79
Siemens/Dade Antithrombin III	12	74.266	6.6	1.76
Roche Antithrombin	10	72.530	6.5	1.86
HaemoDiagnostics Antithrombin III (Fxa)	6	64.445	8.5	2.81
Tehnologia Standart Antithrombin III	6	64.000	9.4	3.08
HemosL Lyophilised Antithrombin	5	68.580	10.2	3.91
Chromogenix Substrate	4	64.450	5.6	2.26
Biodevice ATIII	2	71.450	10.8	6.81
Diagon ATIII	2	74.500	8.5	5.62
Helena Chrom-Z	2	52.650	29.7	13.81
Teco TEChrom AT	2	79.300	1.2	0.87

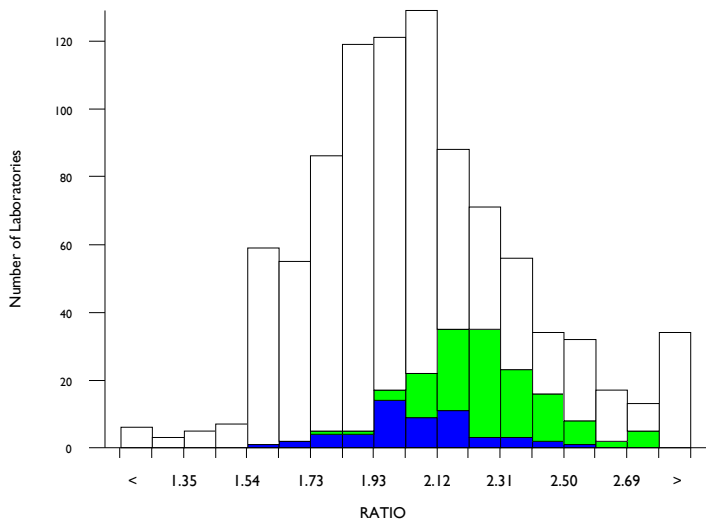


aPTT as a ratio, RATIO

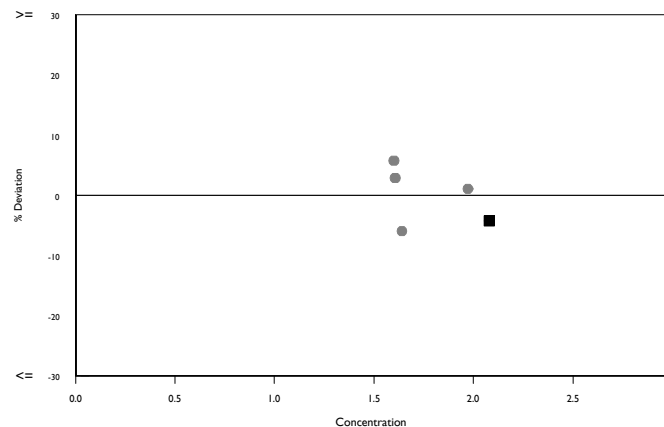
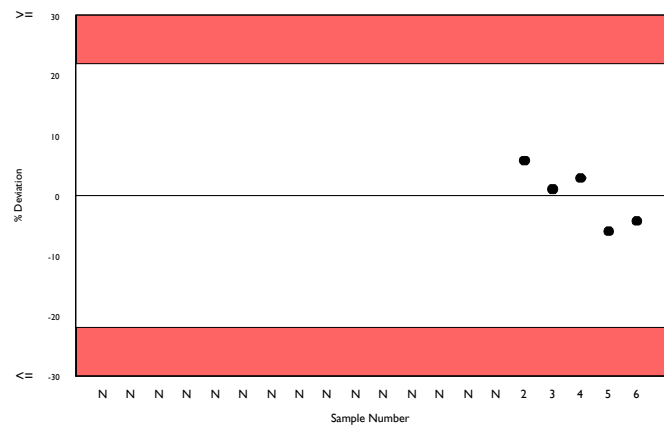
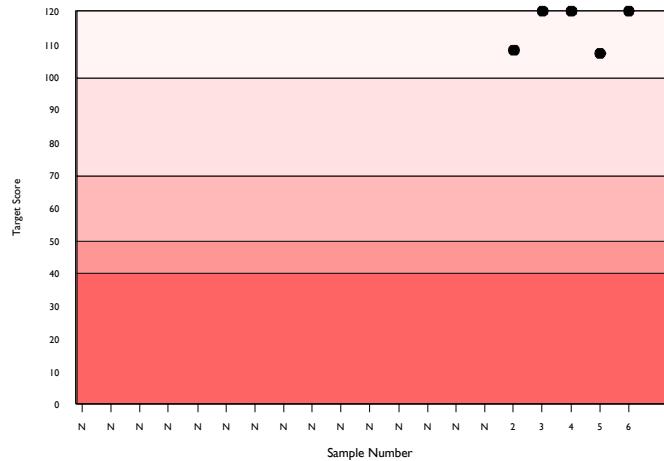
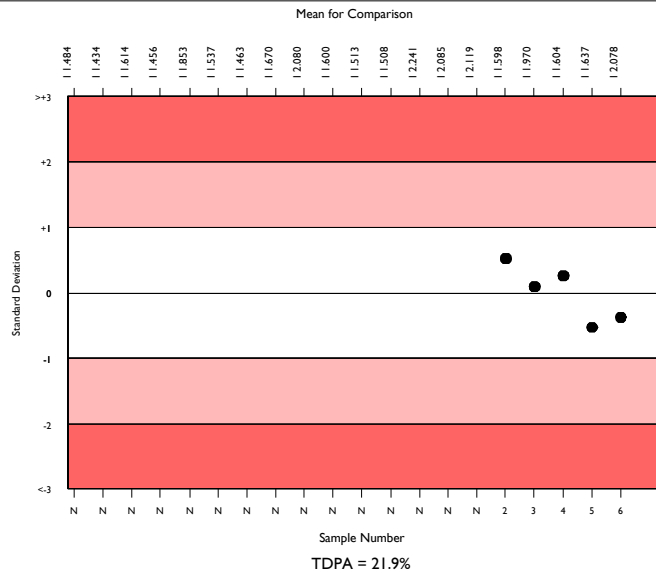
	N	Mean	CV%	U _m	SDPA	Exc.
All Methods	862	2.027	12.6	0.01	0.23	73
Siemens/Dade Actin FS	161	2.230	7.5	0.02	0.25	15
Sysmex CA 500/600 series	50	2.078	7.7	0.03	0.23	4

▲ Your Result	1.990	SDI	-0.38
		RMSDI	Too Few
■ Mean for Comparison	2.078	TS	120
		RMTS	Too Few
		%DEV	-4.2
		RM%DEV	Too Few

Acceptable limits derived from Biological Variation	N/A
Acceptable limits of performance for RIQAS	21.90%



Method	N	Mean	CV%	U _m
Siemens/Dade Actin FS	161	2.230	7.5	0.02
HemosIL Synthasil	151	2.030	8.7	0.02
HemosIL APTT-SP liquid	101	1.689	5.7	0.01
Siemens/Dade Actin FSL	89	1.851	6.3	0.02
Siemens/Dade Pathromtin SL	56	2.509	8.7	0.04
Stago CK Prest	49	2.027	2.8	0.01
Stago PTT Automate	45	1.921	5.9	0.02
Sclavo APTT-S	19	2.471	10.3	0.07
Stago Cephascreen	21	1.912	7.9	0.04
Helena aPTT Si L Minus	18	2.427	9.4	0.07
Stago aPTT	14	1.977	6.2	0.04
Human Hemostat APTT	11	1.899	4.6	0.03
Labitec aPTT	11	1.950	9.8	0.07
Tcoag TriniCLOT aPTT S	10	2.143	8.0	0.07
Erba Actime APTT	8	2.038	19.4	0.17
Bio-Ksel System APTTs	9	1.733	8.8	0.06
MTI Diagnostics APTT	6	2.015	4.1	0.04
Biolabo Bio-CK APTT	5	2.026	3.9	0.04
Diagon Dia-PTT Lyophilised	5	2.186	13.7	0.17
Media IVD aPTT	5	2.207	13.4	0.16
Teco TEClot APTT	5	2.222	9.8	0.12

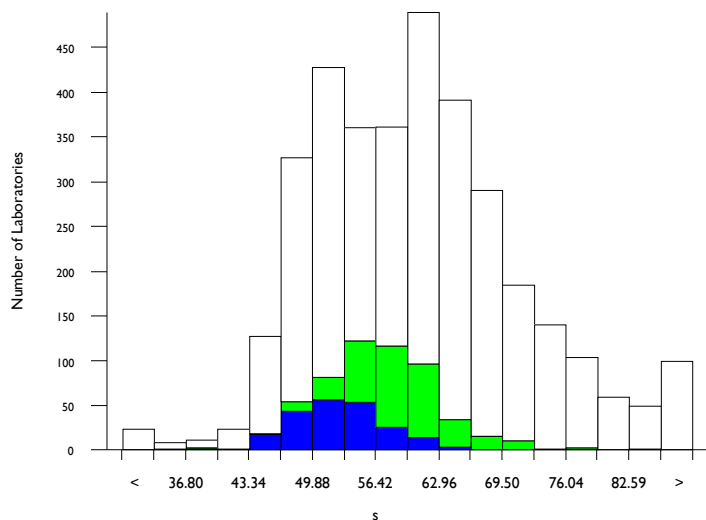


aPTT in seconds, s

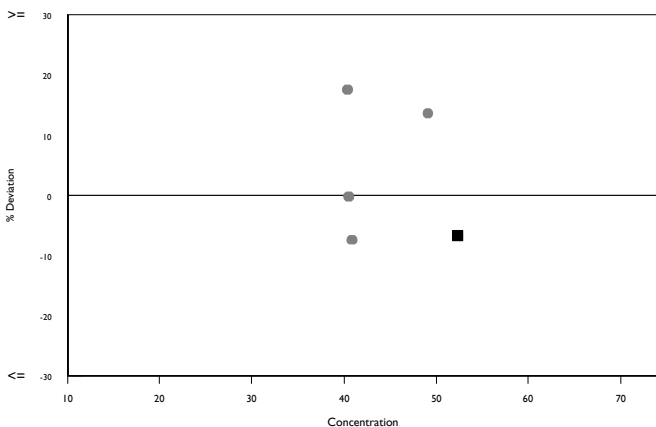
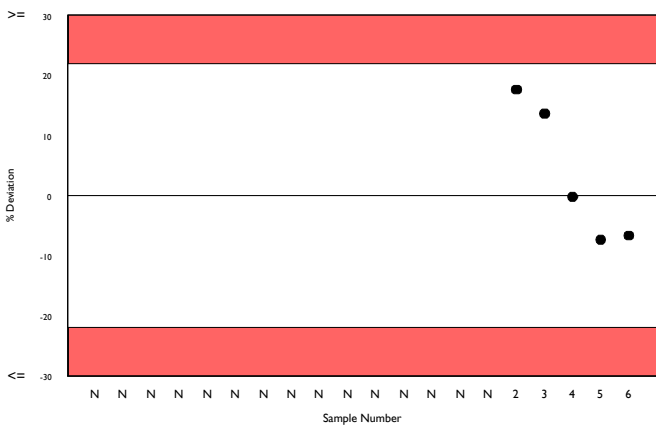
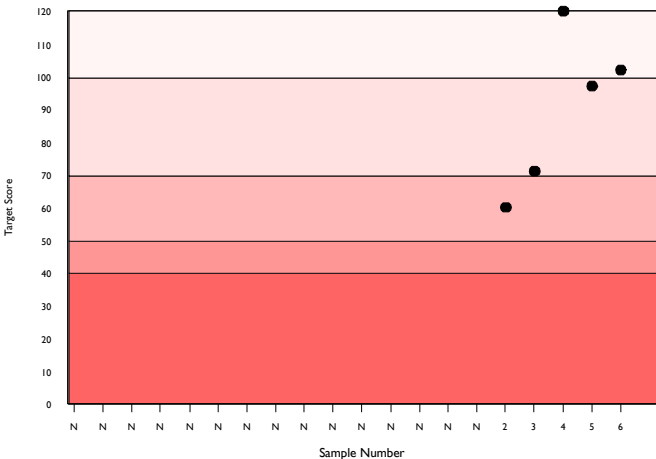
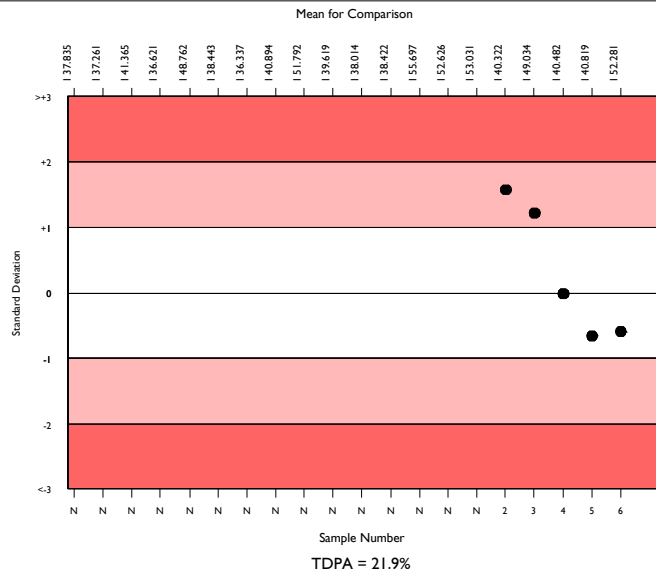
	N	Mean	CV%	U _m	SDPA	Exc.
All Methods	3255	59.698	14.6	0.19	6.67	215
Siemens/Dade Actin FS	527	56.113	9.0	0.28	6.27	27
Sysmex CA 500/600 series	202	52.281	7.6	0.35	5.84	11

▲ Your Result	48.800	SDI	-0.60
		RMSDI	Too Few
■ Mean for Comparison	52.281	TS	102
		RMTS	Too Few
		%DEV	-6.7
		RM%DEV	Too Few

Acceptable limits derived from Biological Variation	N/A
Acceptable limits of performance for RIQAS	21.90%



Method	N	Mean	CV%	U _m
Siemens/Dade Actin FS	527	56.113	9.0	0.28
HemosIL Synthasil	393	61.945	10.2	0.40
Stago CK Prest	367	63.045	7.5	0.31
Siemens/Dade Actin FSL	329	49.796	6.9	0.24
Siemens/Dade Pathromtin SL	304	78.081	8.5	0.48
HemosIL APTT-SP liquid	273	49.640	5.4	0.20
Stago PTT Automate	165	64.929	5.8	0.37
Stago aPTT	83	63.638	5.4	0.47
Stago Cephascreen	83	61.146	8.6	0.72
Human Hemostat APTT	45	55.148	10.0	1.02
Sclavo APTT-S	39	72.785	11.0	1.61
Beijing Succeder aPTT	36	65.224	7.4	1.00
Helena aPTT Si L Minus	34	64.509	8.7	1.20
Roche Cobas APTT	30	69.428	11.2	1.78
Biolabo Bio-CK APTT	28	56.193	11.1	1.48
Teco TEClot APTT	29	63.636	13.6	2.00
Siemens/Dade Actin	26	57.058	9.7	1.35
Cobas aPTT MedS	22	72.686	5.1	0.98
Diagon Dia-PTT Liquid	24	54.121	6.9	0.95
Mindray/Longisland APTT	24	52.986	13.4	1.81
Tcoag TriniCLOT aPTT S	25	65.648	7.4	1.21

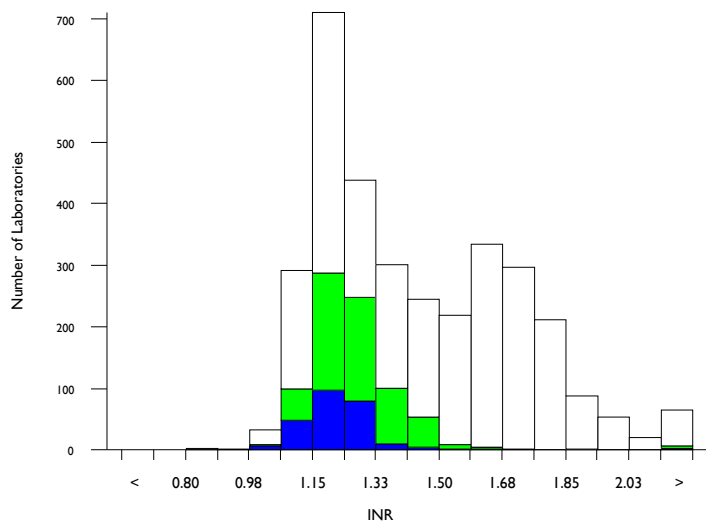


PT as an INR, INR

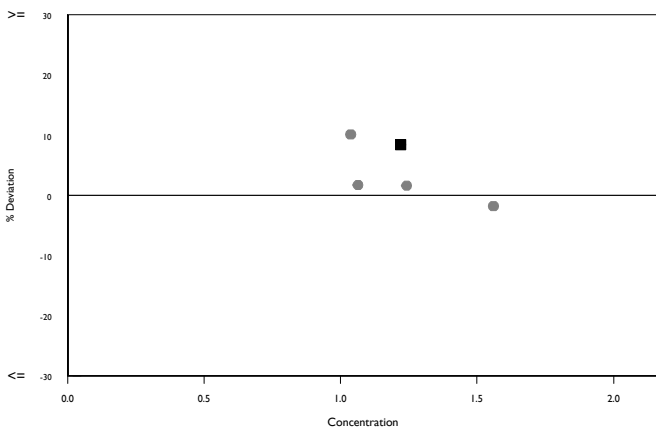
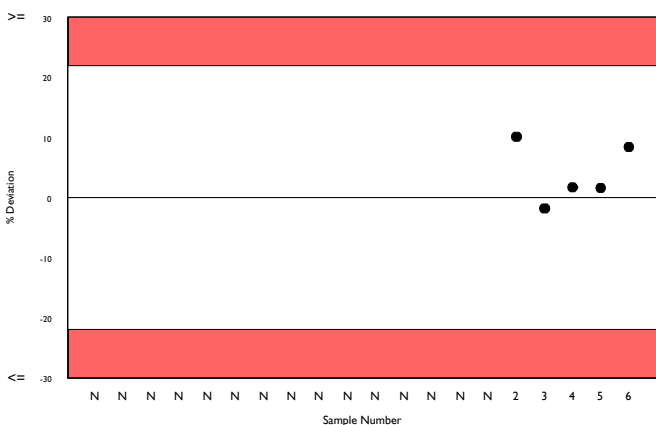
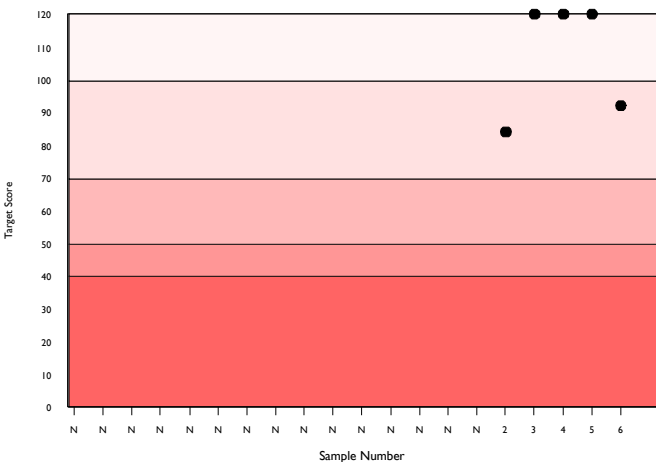
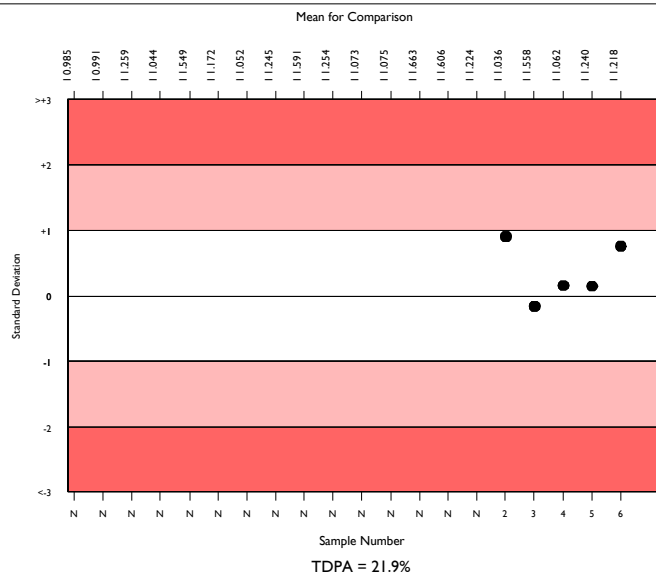
	N	Mean	CV%	U _m	SDPA	Exc.
All Methods	3161	1.419	16.5	0.01	0.16	140
Siemens/Dade Thromborel S	756	1.249	6.6	0.00	0.14	62
Sysmex CA 500/600 series	234	1.218	5.8	0.01	0.14	15

▲ Your Result	1.320	SDI	0.75
		RMSDI	Too Few
■ Mean for Comparison	1.218	TS	92
		RMST	Too Few
		%DEV	8.4
		RM%DEV	Too Few

Acceptable limits derived from Biological Variation	N/A
Acceptable limits of performance for RIQAS	21.90%



Method	N	Mean	CV%	U _m
Siemens/Dade Thromborel S	756	1.249	6.6	0.00
HemosIL RecombiPlasTin 2G	570	1.189	4.3	0.00
Stago STA-NeoPTimal	462	1.692	5.8	0.01
Siemens/Dade Innovin	430	1.708	6.0	0.01
Stago STA Neoplastine CI Plus	161	1.474	8.2	0.01
HemosIL PT-Fibrinogen HS Plus	42	1.408	8.0	0.02
Human Thromboplastin	37	1.521	11.2	0.03
Beijing Succeder PT	39	1.269	5.7	0.01
Roche Cobas PT Screen	35	1.426	3.7	0.01
Sclavo PT	36	1.437	4.1	0.01
Helena Thromboplastin L	30	1.642	10.1	0.04
Stago Neoplastine R	27	1.212	2.1	0.01
Diagon, Dia-PT	28	1.426	11.2	0.04
Mindray/Longisland PT	24	1.391	6.8	0.02
Roche Cobas PT Rec	23	2.028	2.8	0.01
HemosIL ReadiplasTin	18	1.215	5.0	0.02
Teco TEClot PT-S	17	1.339	6.3	0.03
Biolabo Bio-TP (Low ISI)	18	1.600	3.9	0.02
Labitec PT	16	1.346	7.3	0.03
Tcoag TriniCLOT PT Excel S	17	2.103	10.2	0.07
Biolabo Bio-TP	16	1.858	22.9	0.13

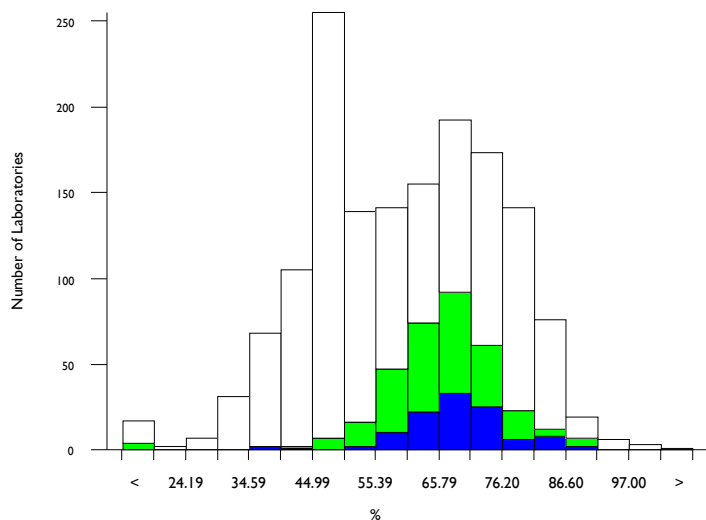


PT activity, %

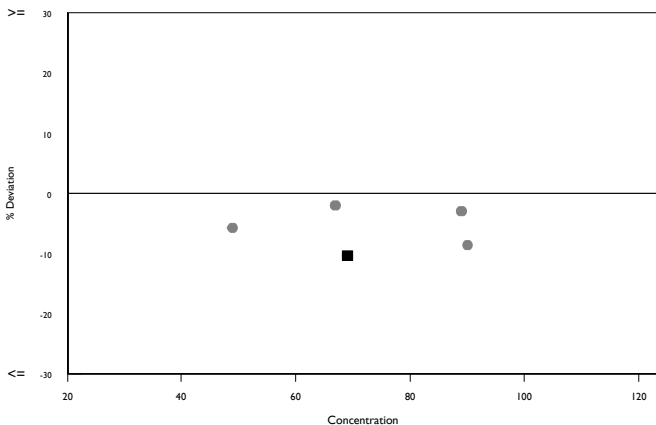
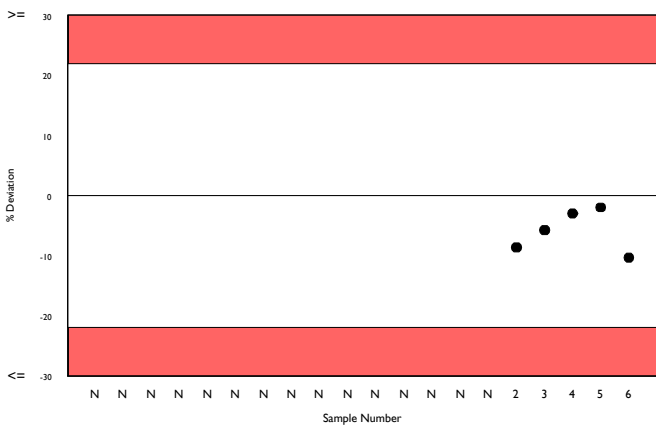
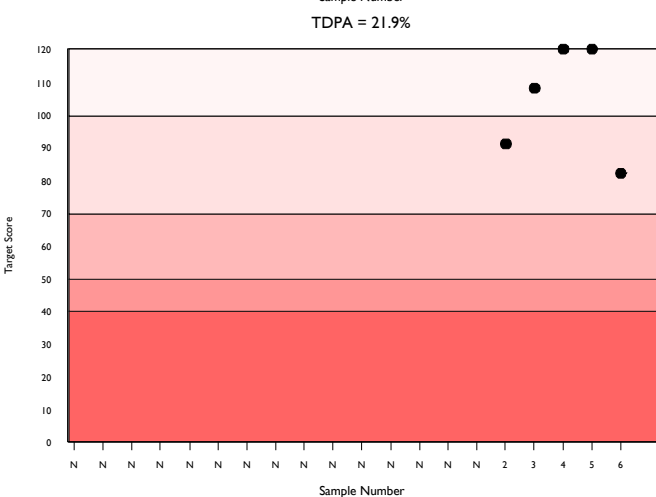
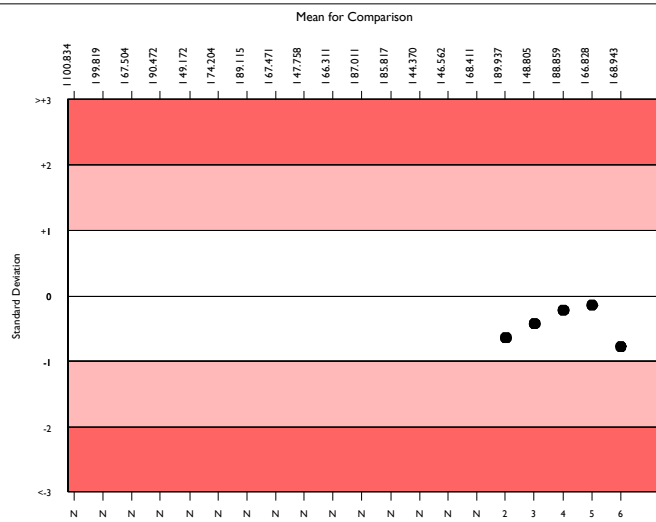
	N	Mean	CV%	U _m	SDPA	Exc.
All Methods	1482	60.598	22.9	0.45	8.07	50
Siemens/Dade Thromborel S	320	66.999	10.5	0.49	8.92	27
Sysmex CA 500/600 series	101	68.943	9.1	0.78	9.18	10

▲ Your Result	61.800	SDI	-0.78
		RMSDI	Too Few
■ Mean for Comparison	68.943	TS	82
		RMTS	Too Few
		%DEV	-10.4
		RM%DEV	Too Few

Acceptable limits derived from Biological Variation	N/A
Acceptable limits of performance for RIQAS	21.90%



Method	N	Mean	CV%	U _m
Siemens/Dade Thromborel S	320	66.999	10.5	0.49
Stago STA-NeoPTimal	276	47.936	6.4	0.23
HemosIL RecombiPlasTin 2G	268	76.691	6.5	0.38
Siemens/Dade Innovin	100	38.882	7.1	0.34
Stago STA Neoplastine CI Plus	47	55.163	10.1	1.02
HemosIL PT-Fibrinogen HS Plus	41	58.808	14.1	1.62
Helena Thromboplastin L	24	57.700	9.6	1.41
Scilavo PT	25	62.948	5.3	0.83
Beijing Succeder PT	21	80.307	6.1	1.34
Human Thromboplastin	19	47.796	11.2	1.54
Mindray/Longisland PT	19	61.977	17.8	3.17
Stago Neoplastine R	19	68.842	3.4	0.68
Labitec PT	13	59.751	16.6	3.44
Biolabo Bio-TP (Low ISI)	14	53.389	6.0	1.06
Diagon, Dia-PT	13	54.699	17.4	3.31
MTI Diagnostics Prothrombin Time	10	53.140	18.0	3.78
Tcoag TriniCLOT PT Excel S	12	34.133	13.8	1.70
Roche Cobas PT Screen	11	62.745	4.9	1.16
Biolabo Bio-TP	10	52.100	20.2	4.16
Erba Prottime PT	10	60.602	13.6	3.26
Roche Cobas PT Rec	10	31.890	4.3	0.54

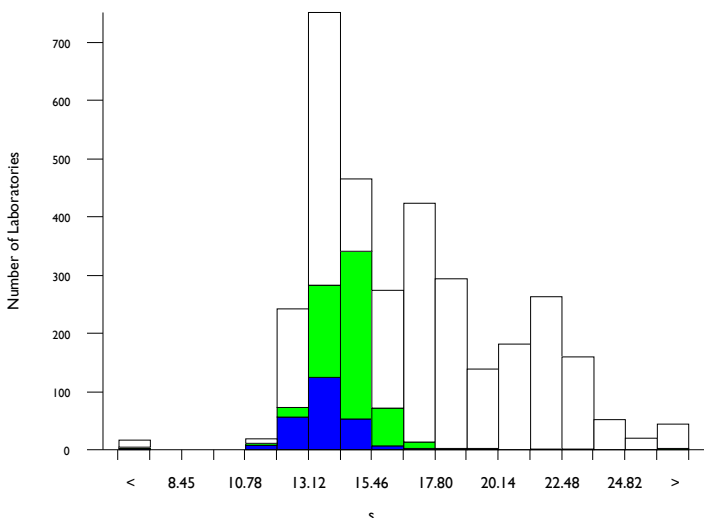


PT in seconds, s

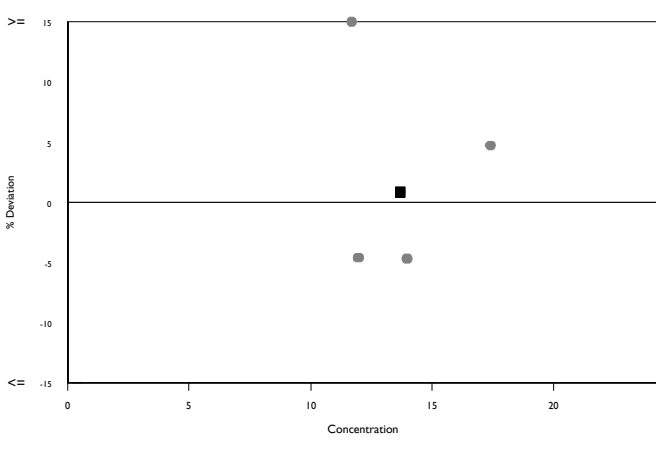
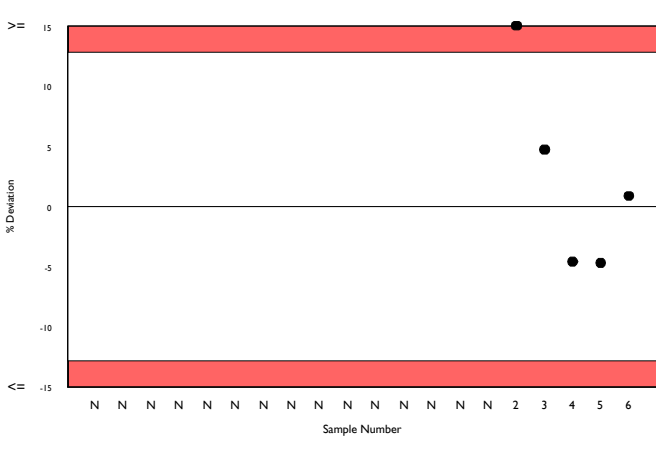
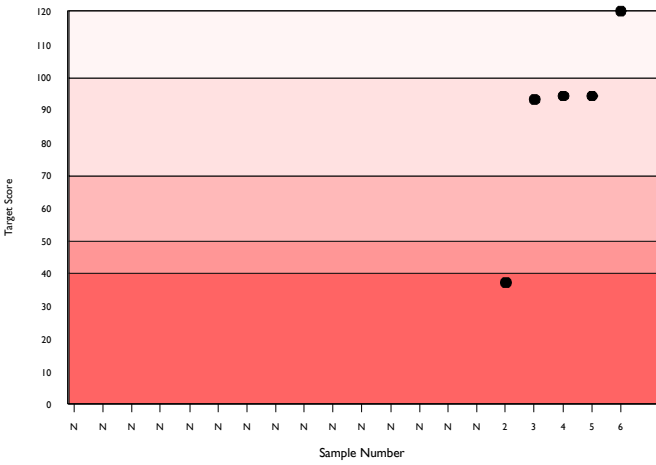
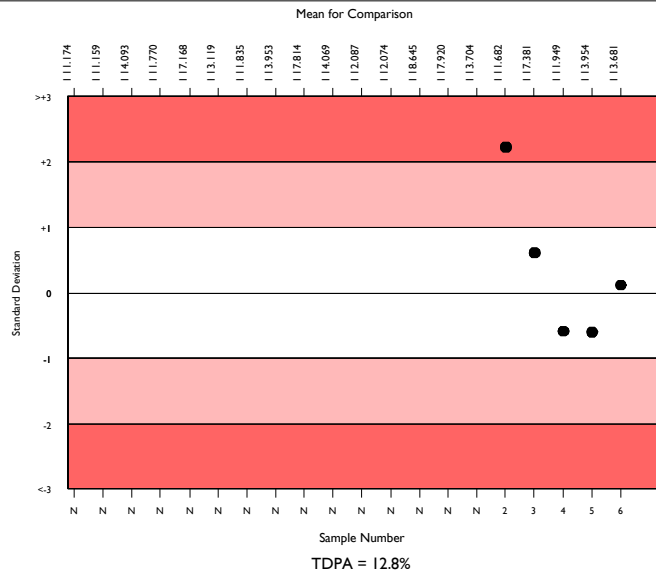
	N	Mean	CV%	U _m	SDPA	Exc.
All Methods	3204	16.637	18.7	0.07	1.29	139
Siemens/Dade Thromborel S	753	14.306	5.6	0.04	1.11	54
Sysmex CA 500/600 series	233	13.681	5.0	0.06	1.06	21

▲ Your Result	13.800	SDI	0.11
		RMSDI	Too Few
■ Mean for Comparison	13.681	TS	120
		RMTS	Too Few
		%DEV	0.9
		RM%DEV	Too Few

Acceptable limits derived from Biological Variation	N/A
Acceptable limits of performance for RIQAS	12.80%



Method	N	Mean	CV%	U _m
Siemens/Dade Thromborel S	753	14.306	5.6	0.04
HemosIL RecombiPlasTin 2G	565	13.467	3.3	0.02
Stago STA-NeoPTimal	462	21.931	4.6	0.06
Siemens/Dade Innovin	442	17.432	5.4	0.06
Stago STA Neoplastine CI Plus	189	18.573	8.9	0.15
Human Thromboplastin	48	18.062	12.6	0.41
HemosIL PT-Fibrinogen HS Plus	39	19.564	5.0	0.20
Roche Cobas PT Screen	36	14.299	2.4	0.07
Beijing Succeder PT	37	16.153	5.1	0.17
Helena Thromboplastin L	33	18.981	8.1	0.33
Sclavo PT	25	18.156	2.2	0.10
Diagon, Dia-PT	25	16.818	7.8	0.33
Biolabo Bio-TP	25	21.648	11.7	0.63
Mindray/Longisland PT	22	17.140	4.9	0.22
Roche Cobas PT Rec	21	18.800	2.8	0.14
Stago Neoplastine R	21	16.638	2.6	0.12
HemosIL ReadPlasTin	20	13.424	2.7	0.10
Tcoag TriniCLOT PT Excel S	20	23.355	5.7	0.37
Teco TEClot PT-S	18	17.142	4.4	0.22
Labitec PT	14	16.313	5.6	0.30
Biolabo Bio-TP (Low ISI)	17	20.959	1.9	0.12



Analyte	Mean for Comparison	Your Result	SDI	RMSDI	%DEV	RM%DEV	TS	RMTS	Performance
D-Dimer (Pilot)	210.794	194.230	-0.37	Too Few	-7.9	Too Few	114	Too Few	
Fibrinogen	161.845	168.000	0.35	Too Few	3.8	Too Few	117	Too Few	
Antithrombin III activity	63.400	66.500	0.35	Too Few	4.9	Too Few	115	Too Few	
aPTT as a ratio	2.078	1.990	-0.38	Too Few	-4.2	Too Few	120	Too Few	
aPTT in seconds	52.281	48.800	-0.60	Too Few	-6.7	Too Few	102	Too Few	
PT as an INR	1.218	1.320	0.75	Too Few	8.4	Too Few	92	Too Few	
PT activity	68.943	61.800	-0.78	Too Few	-10.4	Too Few	82	Too Few	
PT in seconds	13.681	13.800	0.11	Too Few	0.9	Too Few	120	Too Few	

ORMSDI N/A

ORM%DEV N/A

ORMTS N/A

END OF REPORT