

Laboratorio Emotest s.r.l.

COAGULATION

CYCLE 15 SAMPLE 5

Explanation of codes used in this report

R - Results removed due to reconstitution error
N - No result returned
C - Result corrected

Authorised by: Stephen Doherty, RIQAS Manager

Issue No: 1

Issue Date: 18/05/2023

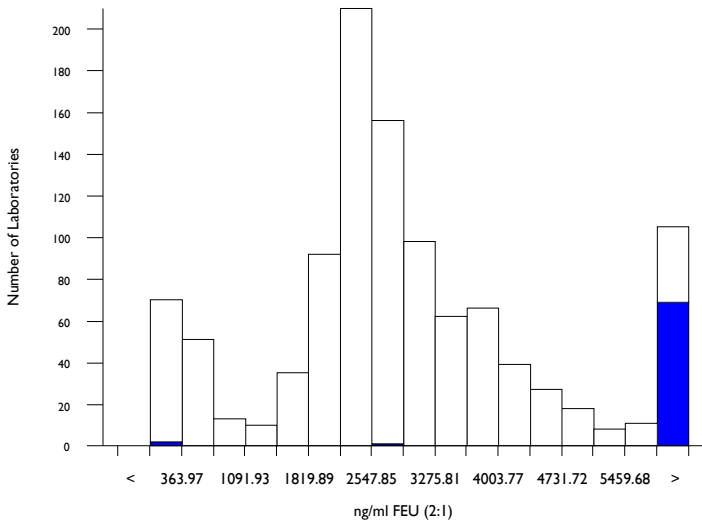
Randox Laboratories Limited
55 Diamond Road
CRUMLIN BT29 4QY
Tel: +44 (0)28 9445 4399
Fax: +44 (0)28 9445 4398
Email: mail@riqas.com

D-Dimer (Pilot), ng/ml FEU (2:1)

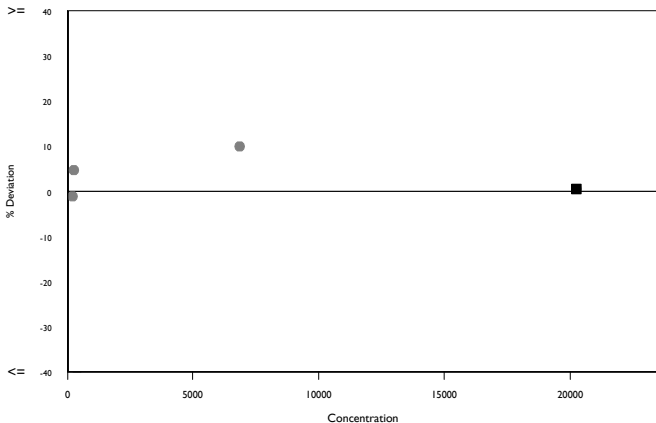
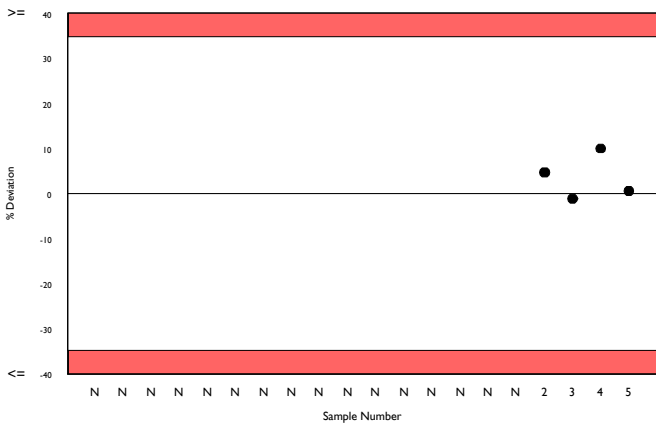
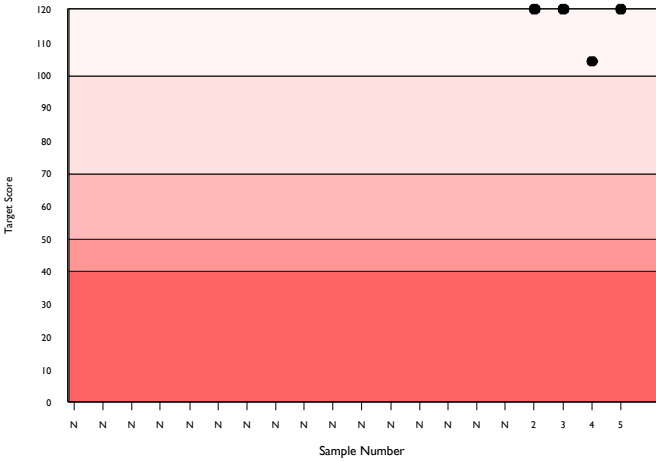
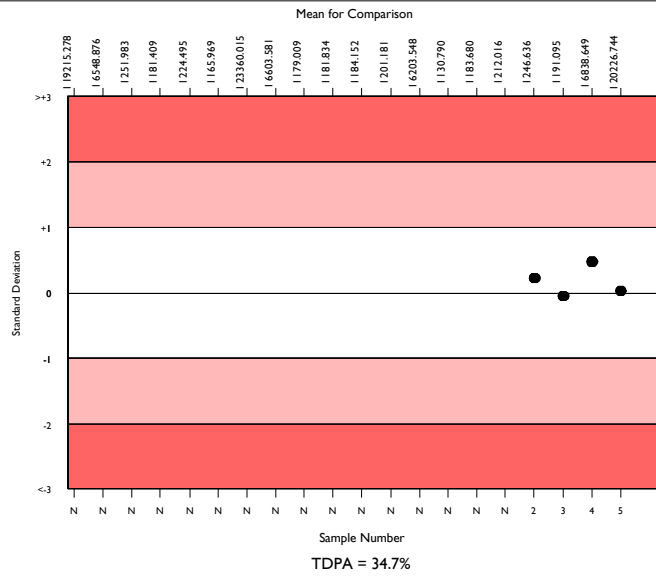
	N	Mean	CV%	U _m	SDPA	Exc.
All Methods	909	2622.210	40.7	44.24	553.19	226
Biomerieux VIDAS Exclusion II	58	20226.744	9.1	303.18	4267.06	72
Biomerieux Vidas/miniVidas/Vidas 3	58	20226.744	9.1	303.18	4267.06	72

▲ Your Result	20330.000	SDI	0.02
		RMSDI	Too Few
■ Mean for Comparison	20226.744	TS	120
		RMTS	Too Few
		%DEV	0.5
		RM%DEV	Too Few

Acceptable limits derived from Biological Variation	N/A
Acceptable limits of performance for RIQAS	34.70%



Method	N	Mean	CV%	U _m
Siemens Innovance D-Dimer	308	2835.350	12.7	25.60
HemosIL D-Dimer HS 500	153	2346.612	6.7	15.92
Stago Sta Liatest D-DI/Plus	121	3859.378	8.9	39.09
Biomerieux VIDAS Exclusion II	58	20226.744	9.1	303.18
HemosIL D-Dimer	48	2460.167	51.8	229.94
HemosIL D-Dimer HS	42	2222.801	11.2	48.01
Roche Cobas D-DI 2	29	403.724	19.6	18.34
Roche Cobas D-DI2 citrated plasma	16	393.188	11.4	14.06
ImproGen D-Dimer	8	317.738	10.2	14.31
Roche Cobas t511/t711 D-DI2	12	348.500	3.9	4.90
Abbott Architect/Alinity Quantia D-Dimer	10	2778.788	3.1	34.31
HemosIL D-Dimer 500	11	2154.209	10.6	86.34
Diagon D-Dimer	9	2193.333	10.8	98.78
Siemens Immulite 2000 D-Dimer	8	4451.625	17.9	352.81
Finicare D-Dimer	7	3560.000	35.5	597.62
Kinetic Latex Turbidimetry D-Dimer	8	945.000	33.6	140.13
Roche Integra D-DI 2	8	436.086	17.1	32.92
Siemens D-Dimer Plus	8	5764.250	15.3	391.00
Roche Cobas h232 D-Dimer	7	5354.286	7.5	190.61
Helena Auto-Red D-Dimer	4	1779.500	11.0	122.87
Beckman AU D-Dimer	4	532.500	23.7	78.95

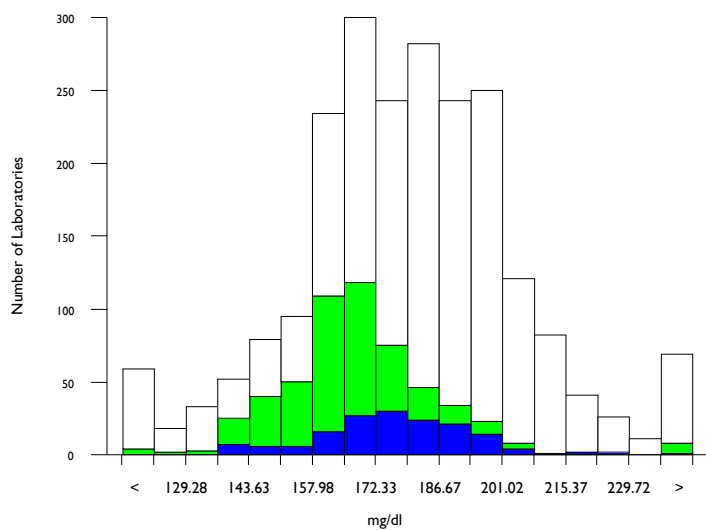


Fibrinogen, mg/dl

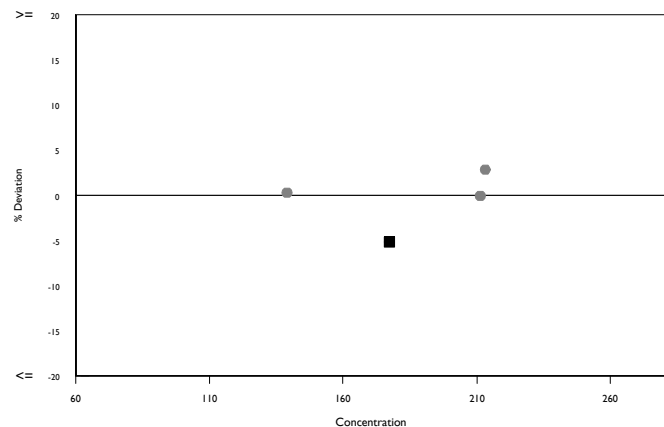
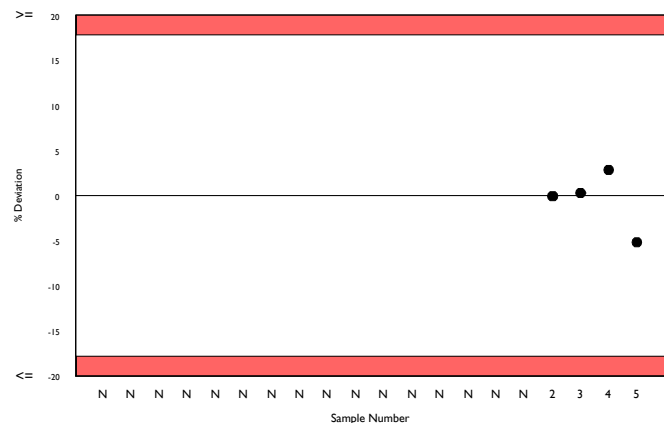
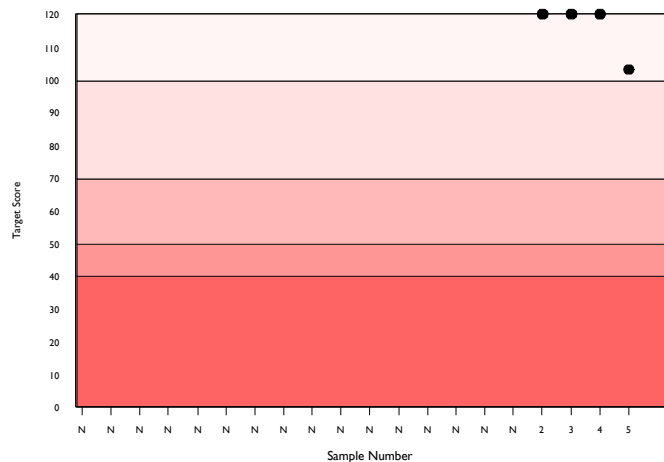
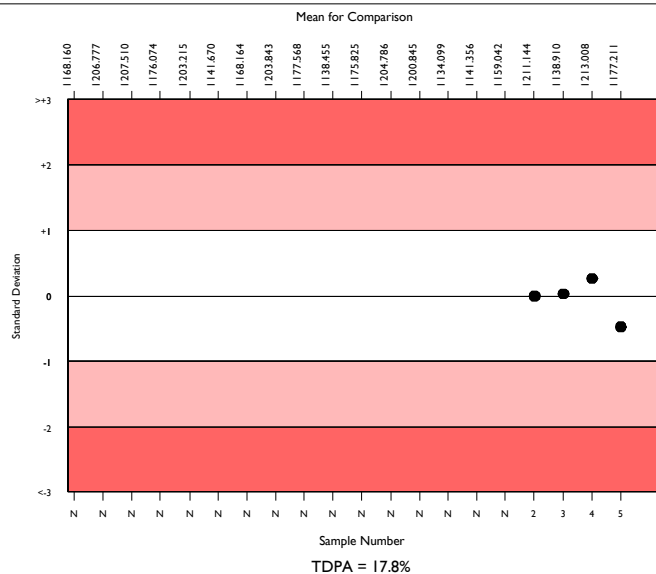
	N	Mean	CV%	U _m	SDPA	Exc.
All Methods	2059	179.504	10.7	0.52	19.42	179
Siemens/Dade Thrombin	511	167.292	8.1	0.74	18.10	39
Sysmex CA 500/600 series	148	177.211	7.9	1.44	19.17	13

▲ Your Result	168.000	SDI	-0.48
		RMSDI	Too Few
■ Mean for Comparison	177.211	TS	103
		RMTS	Too Few
		%DEV	-5.2
		RM%DEV	Too Few

Acceptable limits derived from Biological Variation	N/A
Acceptable limits of performance for RIQAS	17.80%



Method	N	Mean	CV%	U _m
Siemens/Dade Thrombin	511	167.292	8.1	0.74
Stago Fibrinogen/ Liquid-Fib	391	195.025	5.1	0.62
HemosIL QFA (bovine thrombin)	240	173.753	8.7	1.22
HemosIL Fibrinogen C	223	182.513	7.1	1.09
Siemens/Dade Multifibrin U	210	178.435	9.1	1.39
HemosIL RecombiPlasTin 2G	32	139.253	13.8	4.23
Sclavo Fibrinogen	34	188.579	8.6	3.46
Diagon Dia-FIB	27	149.222	6.4	2.30
Biolabo Bio-Fibri	23	189.753	13.0	6.43
Roche Cobas t511/t711 Fibrinogen	22	198.636	7.0	3.68
Helena Clausa Fibrinogen 100	18	198.011	9.0	5.26
HemosIL PT-Fibrinogen HS Plus	19	185.089	8.6	4.55
Human Fibrinogen	18	205.783	7.4	4.46
Mindray/Longisland Fibrinogen	18	180.556	6.5	3.47
Technoclone Fibrinogen	20	210.550	19.8	11.68
Labitec Fibrinogen	11	188.441	11.6	8.26
Bio-Ksel Fibrinogen	14	199.429	8.1	5.41
Siemens/Dade Innovin derived Fibrinogen	13	130.915	17.4	7.88
Roche Cobas t411 Fibrinogen	14	185.500	7.0	4.32
Stago STA Fibr-i-Prest Automate	11	189.727	6.6	4.68
Tcoag TriniCLOT Fibrinogen	12	193.808	6.1	4.23

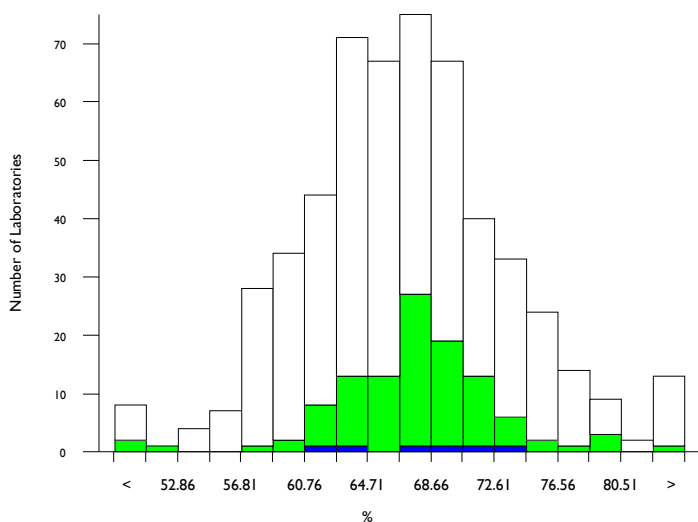


Antithrombin III activity, %

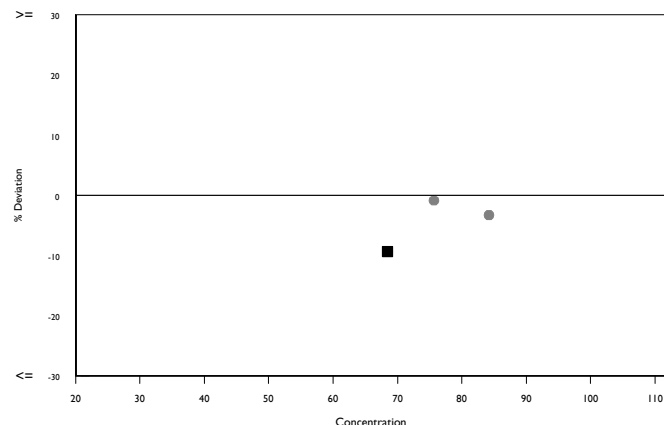
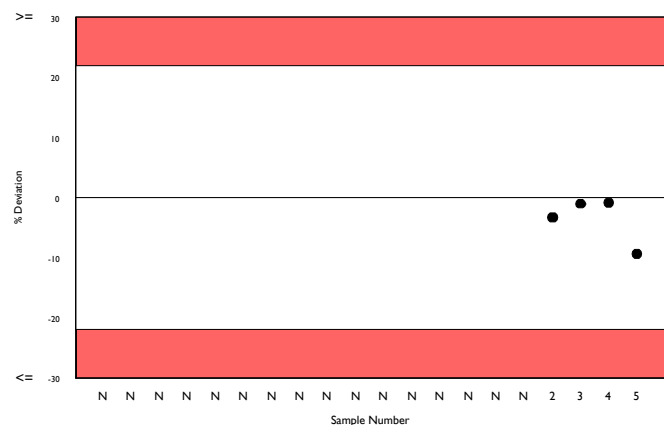
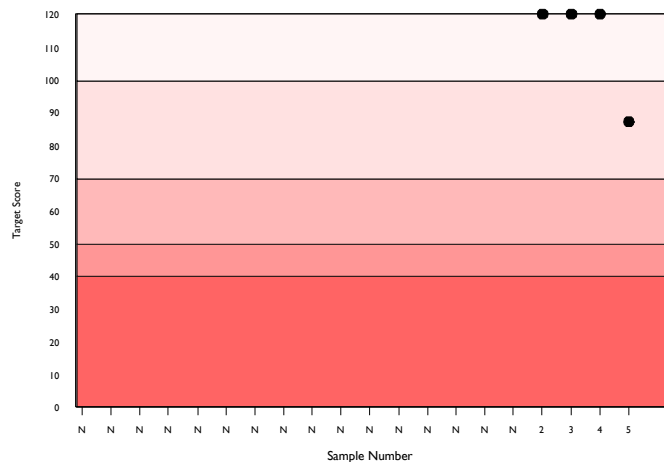
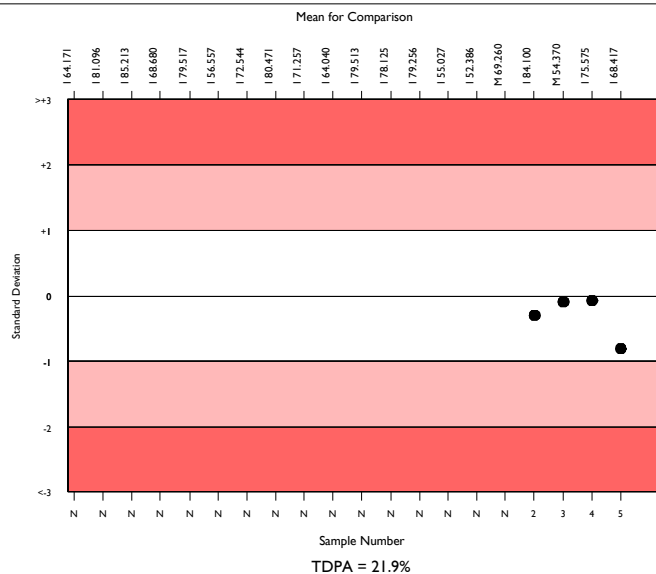
	N	Mean	CV%	U _m	SDPA	Exc.
All Methods	507	66.692	7.9	0.29	7.30	34
Siemens/Dade Berichrom ATIII	103	67.700	5.3	0.44	7.41	9
Sysmex CA 500/600 series	6	68.417	7.1	2.46	7.89a	0

▲ Your Result	62.000	SDI	-0.81
		RMSDI	Too Few
■ Mean for Comparison	68.417	TS	87
		RMTS	Too Few
		%DEV	-9.4
		RM%DEV	Too Few

Acceptable limits derived from Biological Variation	N/A
Acceptable limits of performance for RIQAS	21.90%



Method	N	Mean	CV%	U _m
HemosL Liquid Antithrombin	166	62.962	6.0	0.37
Siemens/Dade Berichrom ATIII	103	67.700	5.3	0.44
Siemens Innovance Antithrombin III	79	68.668	5.4	0.53
STACHrom ATIII	62	72.663	5.9	0.68
Sclavo ATIII	22	65.552	9.0	1.57
Siemens/Dade Antithrombin III	12	68.179	7.8	1.93
Roche Chromogenic Thrombin	11	65.109	4.2	1.03
Roche Antithrombin	9	67.489	6.8	1.91
HaemoDiagnostics Antithrombin III (Fxa)	7	63.927	12.6	3.80
Tehnologia Standart Antithrombin III	5	73.540	20.1	8.26
HemosL Lyophilised Antithrombin	4	63.275	14.0	5.54
Chromogenix Substrate	3	61.667	7.5	3.33
Biodevice ATIII	2	67.400	15.9	9.50
Diagon ATIII	2	70.500	9.0	5.62
Teco TEChrom AT	2	60.450	23.5	12.56

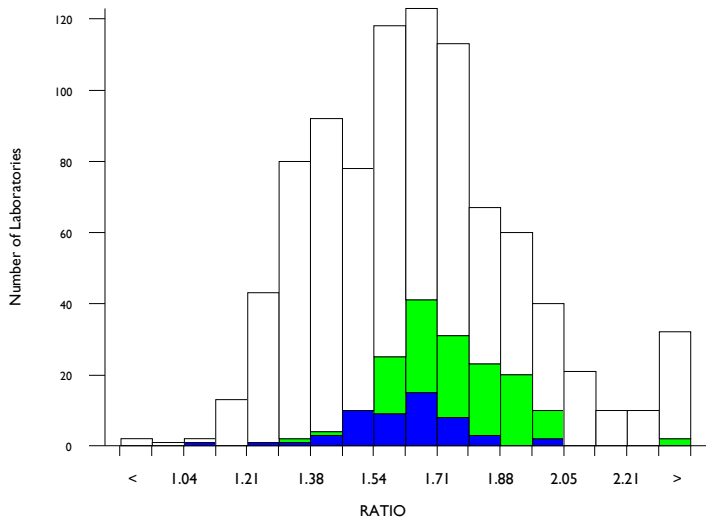


aPTT as a ratio, RATIO

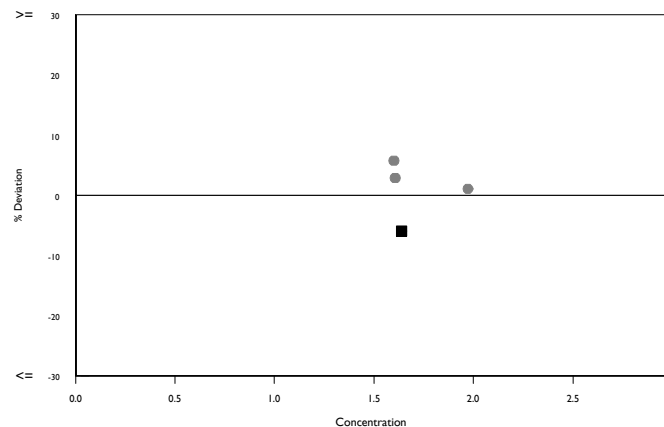
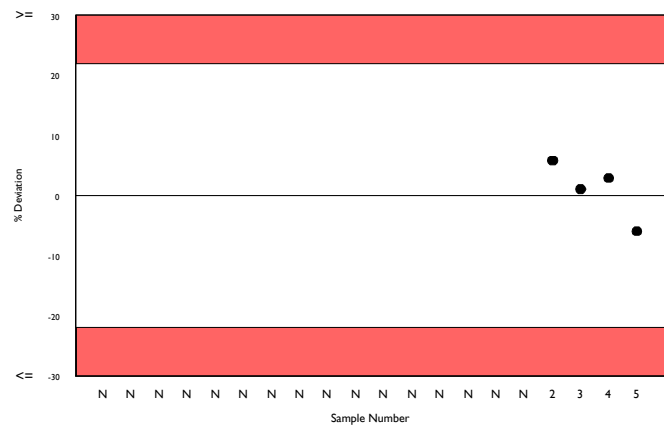
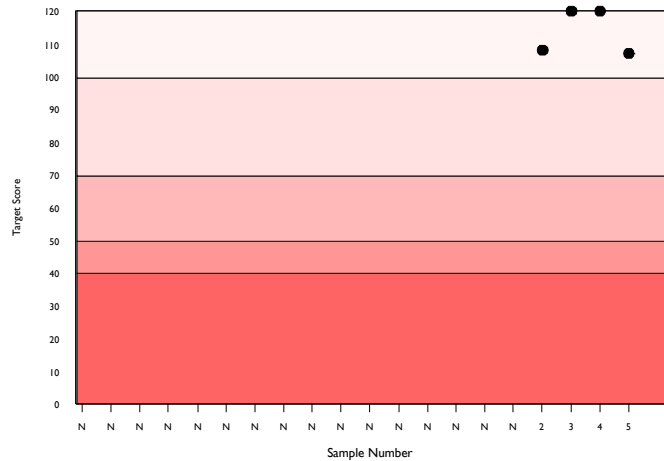
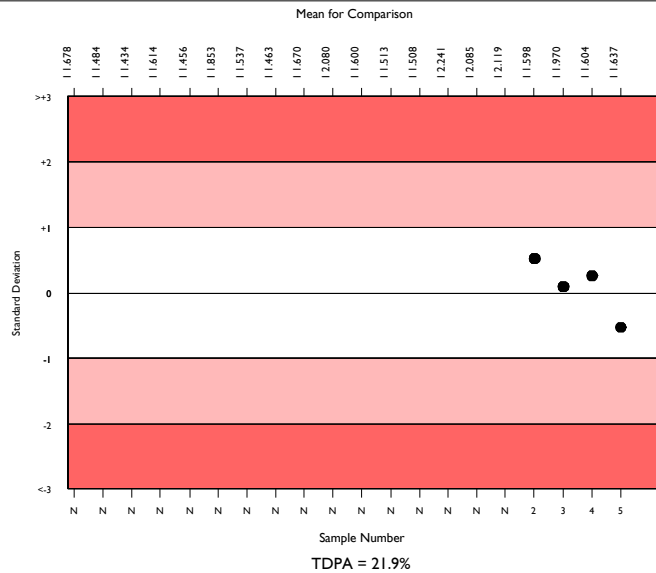
	N	Mean	CV%	U _m	SDPA	Exc.
All Methods	853	1.633	13.7	0.01	0.18	52
Siemens/Dade Actin FS	162	1.742	7.9	0.01	0.19	8
Sysmex CA 500/600 series	48	1.637	7.0	0.02	0.18	5

▲ Your Result	1.540	SDI RMSDI	-0.53 Too Few
■ Mean for Comparison	1.637	TS RMST	107 Too Few
		%DEV RM%DEV	-5.9 Too Few

Acceptable limits derived from Biological Variation	N/A
Acceptable limits of performance for RIQAS	21.90%



Method	N	Mean	CV%	U _m
Siemens/Dade Actin FS	162	1.742	7.9	0.01
HemosIL Synthasil	145	1.734	8.4	0.02
HemosIL APTT-SP liquid	97	1.331	4.6	0.01
Siemens/Dade Actin FSL	86	1.428	4.8	0.01
Siemens/Dade Pathromtin SL	58	2.104	9.2	0.03
Stago CK Prest	54	1.710	4.2	0.01
Stago PTT Automate	40	1.559	5.5	0.02
Stago Cephascreen	28	1.551	8.1	0.03
Sclavo APTT-S	18	1.976	7.3	0.04
Helena aPTT Si L Minus	16	1.841	12.2	0.07
Stago aPTT	15	1.628	5.9	0.03
Human Hemostat APTT	12	1.583	6.2	0.04
Labitec aPTT	9	1.670	5.7	0.04
Erba Actime APTT	9	1.702	23.8	0.17
Bio-Ksel System APTTs	9	1.334	4.7	0.03
Tcoag TriniCLOT aPTT S	8	1.709	9.8	0.07
MTI Diagnostics APTT	5	1.592	8.9	0.08
Biolabo Bio-CK APTT	6	1.632	5.8	0.05
Diagon Dia-PTT Lyophilised	5	1.676	10.0	0.09
Media IVD aPTT	4	1.634	5.1	0.05
Siemens/Dade Actin SL	4	1.860	8.5	0.10

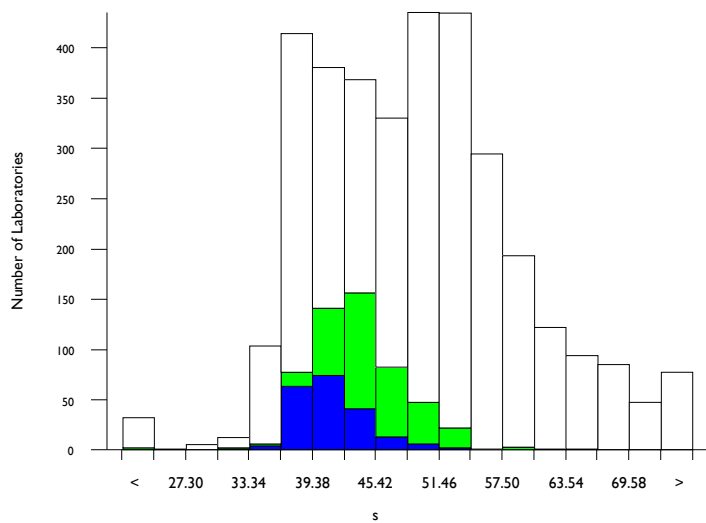


aPTT in seconds, s

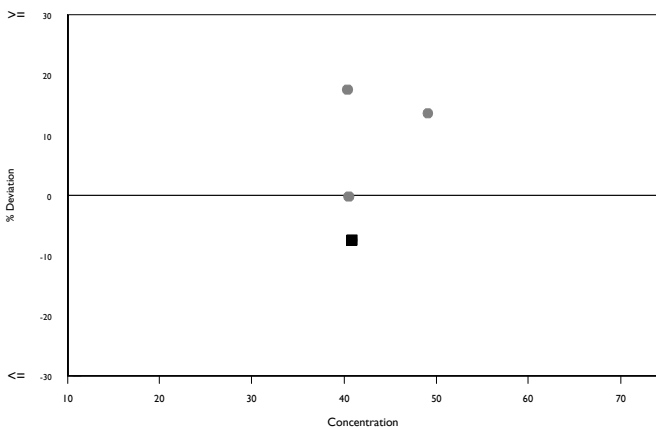
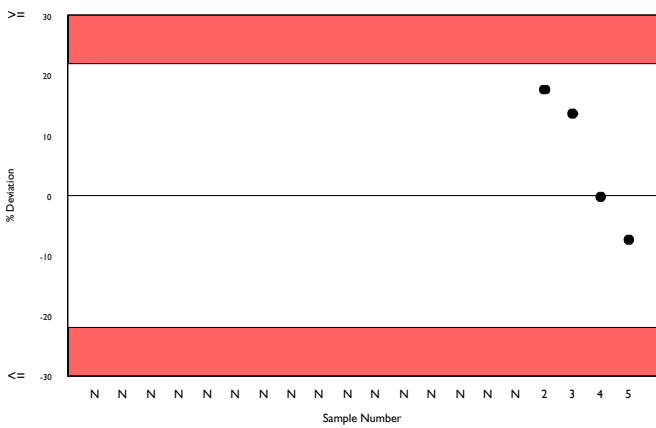
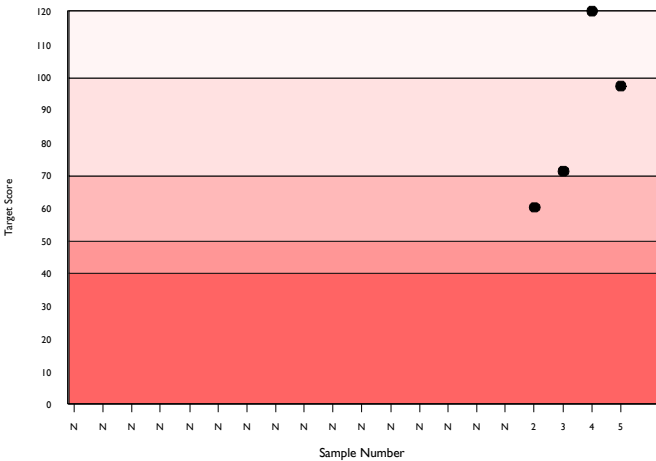
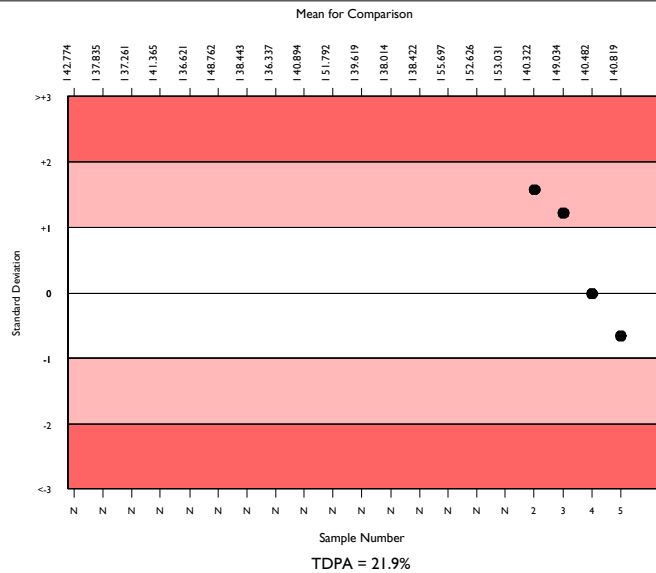
	N	Mean	CV%	U _m	SDPA	Exc.
All Methods	3225	48.444	16.6	0.18	5.41	201
Siemens/Dade Actin FS	508	43.321	8.2	0.20	4.84	33
Sysmex CA 500/600 series	190	40.819	6.4	0.24	4.56	15

▲ Your Result	37.800	SDI	-0.66
		RMSDI	Too Few
■ Mean for Comparison	40.819	TS	97
		RMTS	Too Few
		%DEV	-7.4
		RM%DEV	Too Few

Acceptable limits derived from Biological Variation	N/A
Acceptable limits of performance for RIQAS	21.90%



Method	N	Mean	CV%	U _m
Siemens/Dade Actin FS	508	43.321	8.2	0.20
Stago CK Prest	367	52.511	6.1	0.21
HemosIL Synthasil	375	53.242	9.3	0.32
Siemens/Dade Actin FSL	316	38.328	6.1	0.17
Siemens/Dade Pathromtin SL	305	66.315	8.0	0.38
HemosIL APTT-SP liquid	271	39.620	5.2	0.16
Stago PTT Automate	156	53.077	5.5	0.29
Stago Cephascreen	95	49.280	8.2	0.52
Stago aPTT	89	52.540	5.8	0.40
Human Hemostat APTT	47	46.353	10.0	0.84
Beijing Succeder aPTT	36	49.761	4.8	0.49
Sclavo APTT-S	35	56.486	6.7	0.81
Helena aPTT Si L Minus	30	52.220	9.3	1.11
Roche Cobas APTT	30	55.390	12.1	1.53
Diagon Dia-PTT Liquid	26	41.617	9.0	0.91
Biolabo Bio-CK APTT	25	48.006	9.2	1.11
Siemens/Dade Actin	25	44.028	10.3	1.13
Cobas aPTT MedS	23	61.506	6.9	1.10
Teco TEClot APTT	25	49.964	11.6	1.45
Tcoag TriniCLOT aPTT S	22	49.782	4.5	0.60
Labitec aPTT	22	49.963	8.7	1.16

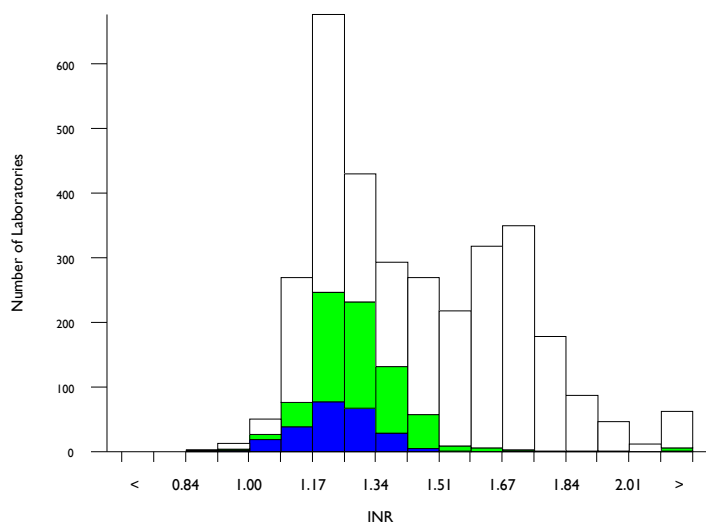


PT as an INR, INR

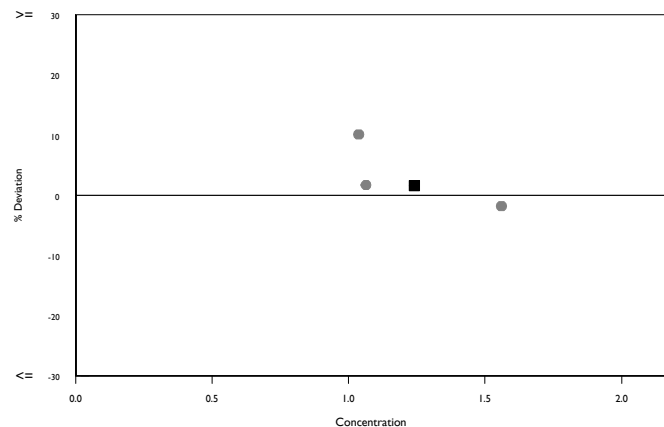
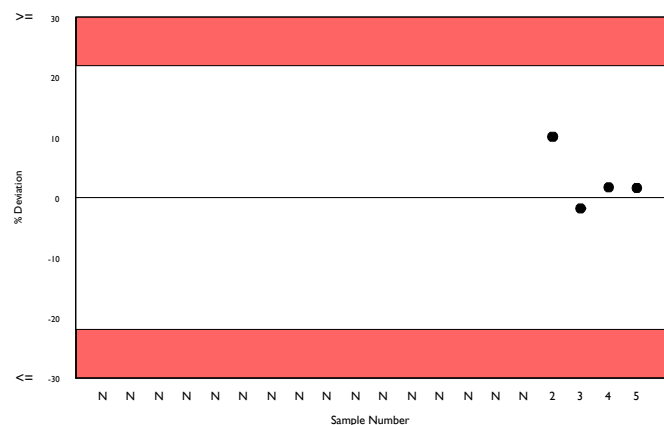
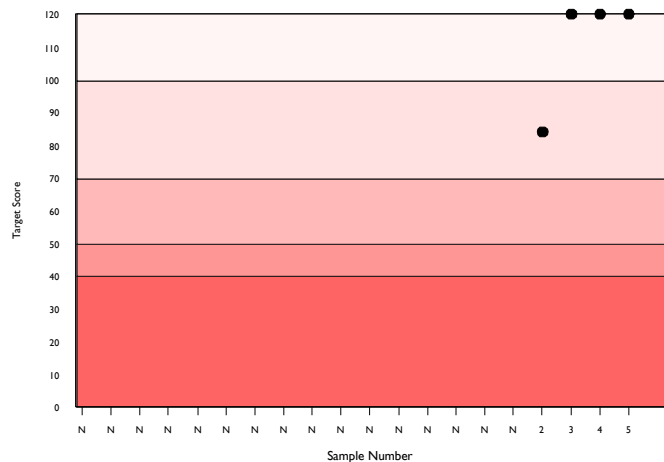
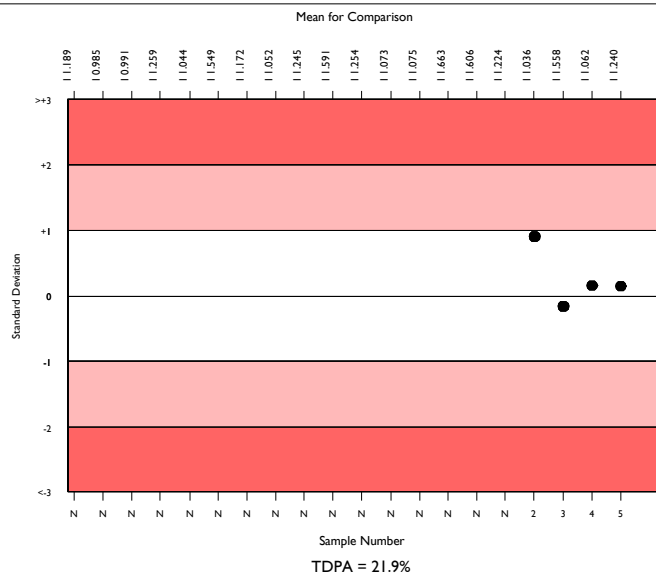
	N	Mean	CV%	U _m	SDPA	Exc.
All Methods	3143	1.428	15.6	0.00	0.16	133
Siemens/Dade Thromborel S	742	1.278	6.9	0.00	0.14	63
Sysmex CA 500/600 series	230	1.240	7.0	0.01	0.14	15

▲ Your Result	1.260	SDI	0.14
		RMSDI	Too Few
■ Mean for Comparison	1.240	TS	120
		RMST	Too Few
		%DEV	1.6
		RM%DEV	Too Few

Acceptable limits derived from Biological Variation	N/A
Acceptable limits of performance for RIQAS	21.90%



Method	N	Mean	CV%	U _m
Siemens/Dade Thromborel S	742	1.278	6.9	0.00
HemosIL RecombiPlasTin 2G	564	1.214	4.4	0.00
Stago STA-NeoPTimal	458	1.717	5.7	0.01
Siemens/Dade Innovin	429	1.659	5.1	0.01
Stago STA Neoplastine CI Plus	163	1.508	7.5	0.01
HemosIL PT-Fibrinogen HS Plus	50	1.406	7.4	0.02
Human Thromboplastin	42	1.574	10.3	0.03
Roche Cobas PT Screen	37	1.444	3.9	0.01
Beijing Succeder PT	36	1.203	4.3	0.01
Sciavo PT	33	1.411	5.3	0.02
Helena Thromboplastin L	26	1.578	6.1	0.02
Stago Neoplastine R	27	1.213	4.3	0.01
Diagon, Dia-PT	29	1.324	14.9	0.05
Roche Cobas PT Rec	24	1.916	4.0	0.02
Mindray/Longisland PT	20	1.423	7.7	0.03
HemosIL ReadiplasTin	18	1.210	6.8	0.02
Biolabo Bio-TP (Low ISI)	19	1.651	5.7	0.03
Tcoag TriniCLOT PT Excel S	18	2.072	8.3	0.05
Labitec PT	15	1.335	9.9	0.04
Teco TEClot PT-S	16	1.321	11.9	0.05
Bio-Ksel PT Plus	13	1.190	1.7	0.01



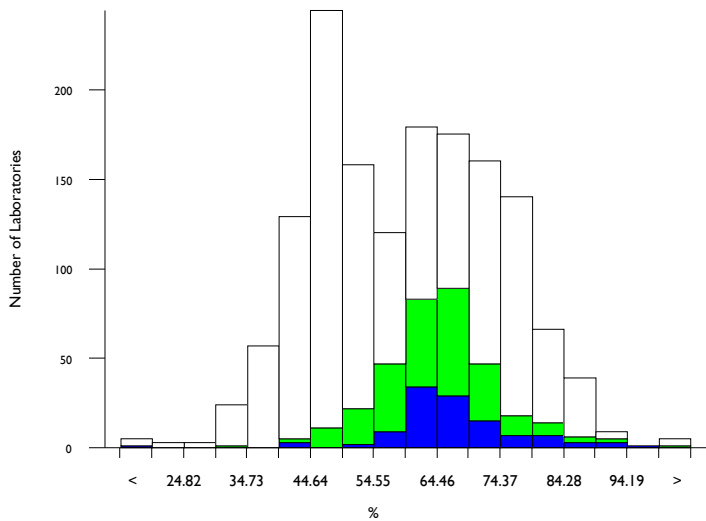
PT activity, %

- All Methods
- Siemens/Dade Thromborel S
- Sysmex CA 500/600 series

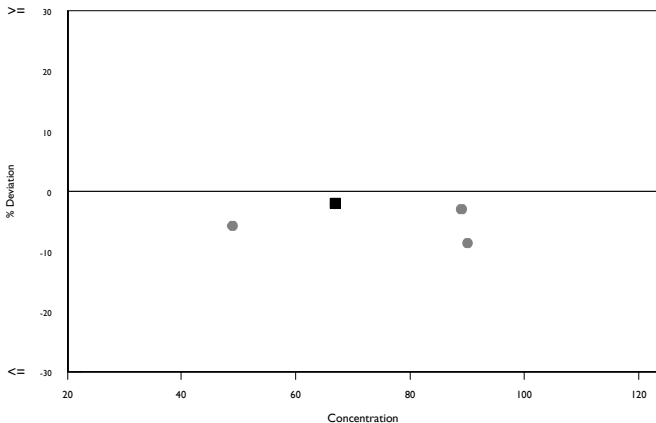
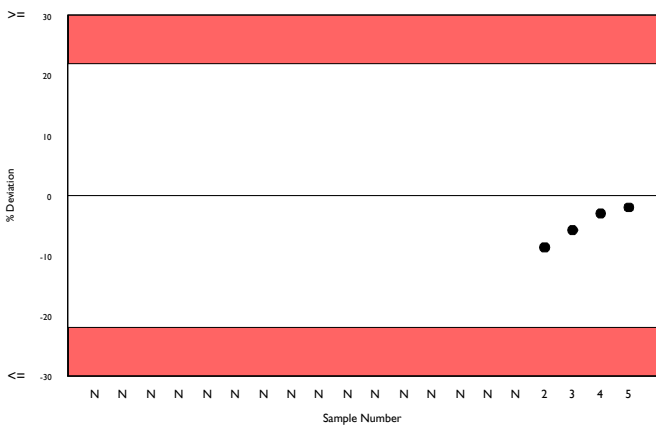
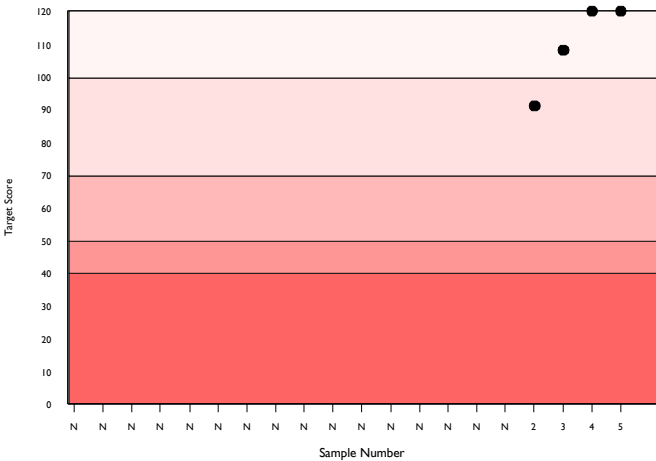
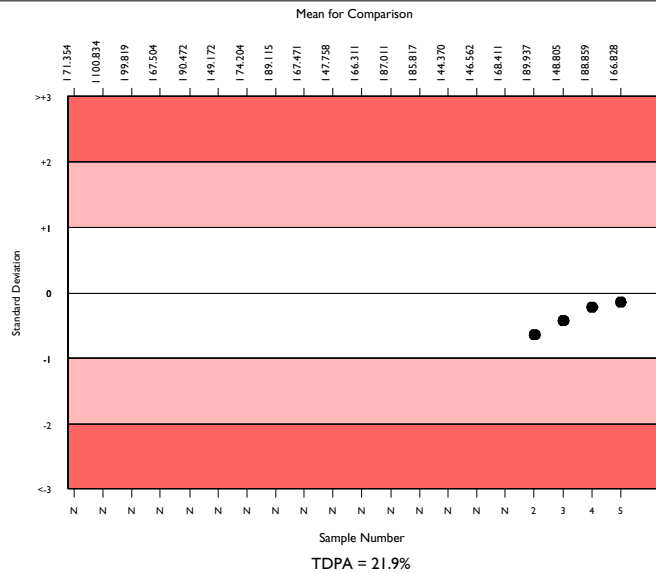
	N	Mean	CV%	U _m	SDPA	Exc.
All Methods	1471	59.508	22.2	0.43	7.92	46
Siemens/Dade Thromborel S	325	64.779	11.3	0.51	8.62	26
Sysmex CA 500/600 series	104	66.828	10.2	0.83	8.90	10

▲ Your Result	65.500	SDI	-0.15
		RMSDI	Too Few
■ Mean for Comparison	66.828	TS	120
		RMTS	Too Few
		%DEV	-2.0
		RM%DEV	Too Few

Acceptable limits derived from Biological Variation	N/A
Acceptable limits of performance for RIQAS	21.90%



Method	N	Mean	CV%	U _m
Siemens/Dade Thromborel S	325	64.779	11.3	0.51
Stago STA-NeoPTimal	282	47.147	6.7	0.24
HemosL RecombiPlasTin 2G	269	74.409	7.1	0.40
Siemens/Dade Innovin	103	40.776	7.2	0.36
Stago STA Neoplastine CI Plus	47	53.012	10.2	0.99
HemosL PT-Fibrinogen HS Plus	43	58.934	10.9	1.23
Beijing Succeder PT	23	82.821	6.3	1.37
Helena Thromboplastin L	22	58.741	15.1	2.36
Human Thromboplastin	23	50.212	16.4	2.14
Sclavo PT	23	63.422	5.7	0.94
Stago Neoplastine R	18	69.472	6.2	1.27
Mindray/Longisland PT	18	61.264	22.8	4.11
Biolabo Bio-TP (Low ISI)	12	51.300	4.5	0.84
Labitec PT	11	59.534	15.2	3.40
MTI Diagnostics Prothrombin Time	13	56.865	18.9	3.73
Roche Cobas PT Screen	11	63.418	5.1	1.22
Tcoag TriniCLOT PT Excel S	12	34.425	14.3	1.77
Biolabo Bio-TP	10	54.310	13.7	2.94
Diagon, Dia-PT	9	53.900	12.0	2.70
HemosL ReadiPlasTin	10	77.960	8.5	2.63
Erba Prottime PT	9	59.929	11.1	2.78

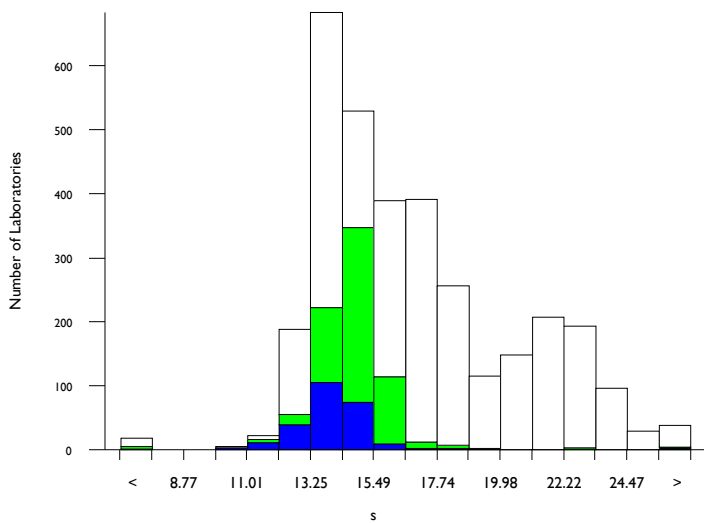


PT in seconds, s

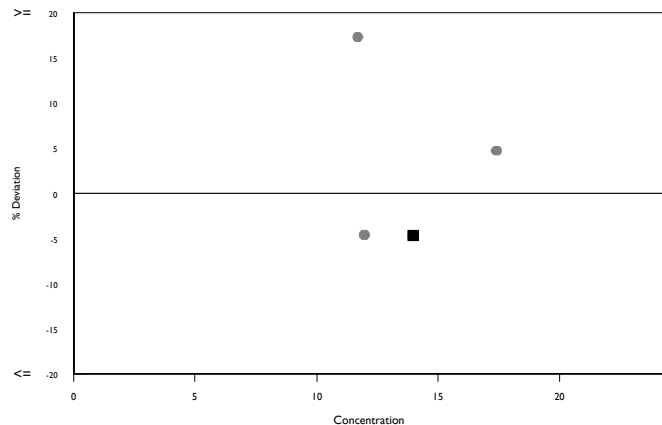
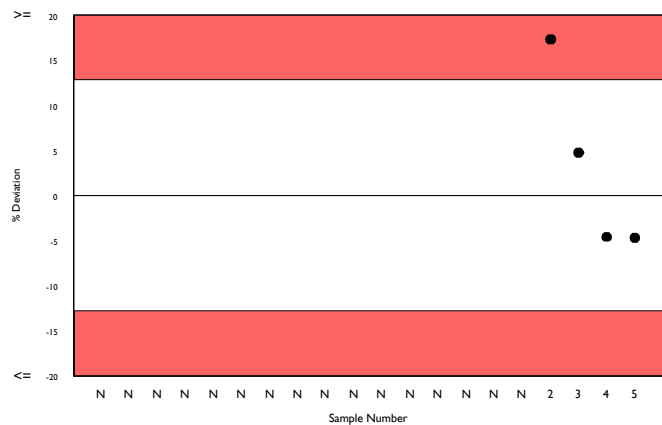
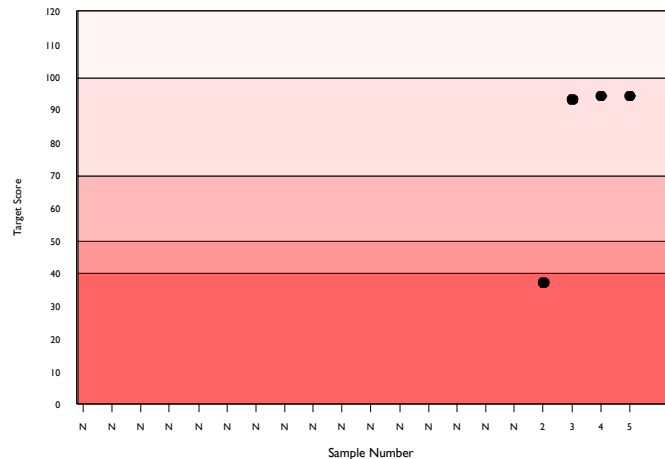
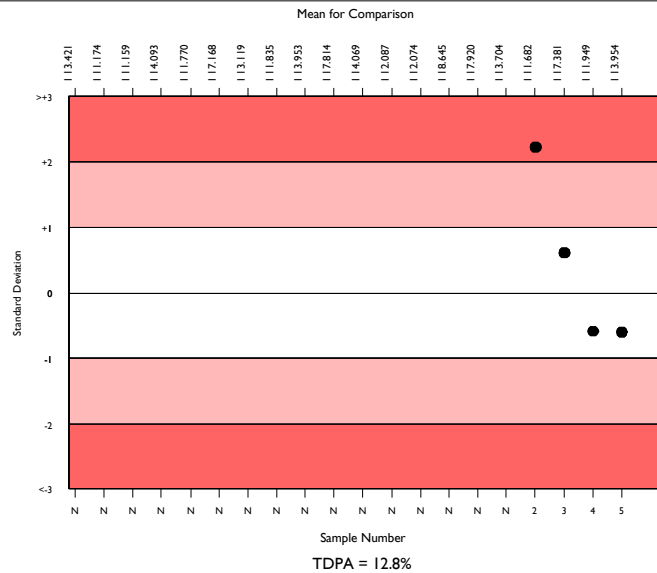
	N	Mean	CV%	U _m	SDPA	Exc.
All Methods	3135	16.621	18.0	0.07	1.29	169
Siemens/Dade Thromborel S	731	14.603	5.8	0.04	1.14	58
Sysmex CA 500/600 series	230	13.954	5.9	0.07	1.09	19

▲ Your Result	13.300	SDI RMSDI	-0.60 Too Few
■ Mean for Comparison	13.954	TS RMST	94 Too Few
		%DEV RM%DEV	-4.7 Too Few

Acceptable limits derived from Biological Variation	N/A
Acceptable limits of performance for RIQAS	12.80%



Method	N	Mean	CV%	U _m
Siemens/Dade Thromborel S	731	14.603	5.8	0.04
HemosIL RecombiPlasTin 2G	547	13.743	3.5	0.03
Stago STA-NeoPTimal	461	22.307	5.0	0.06
Siemens/Dade Innovin	440	16.970	4.4	0.04
Stago STA Neoplastine CI Plus	181	18.837	8.2	0.14
Human Thromboplastin	53	18.218	11.2	0.35
HemosIL PT-Fibrinogen HS Plus	49	19.761	5.2	0.18
Roche Cobas PT Screen	38	14.668	2.9	0.09
Beijing Succeder PT	33	15.409	3.4	0.12
Helena Thromboplastin L	27	18.542	6.3	0.28
Diagon, Dia-PT	25	16.372	5.2	0.21
Sclavo PT	24	17.848	3.2	0.15
Roche Cobas PT Rec	23	17.693	4.6	0.21
Biolabo Bio-TP	23	19.761	11.5	0.59
Stago Neoplastine R	22	16.450	5.1	0.22
HemosIL ReadiplasTin	19	13.537	2.8	0.11
Mindray/Longisland PT	20	17.064	8.2	0.39
Labitec PT	17	15.574	9.5	0.45
Tcoag TriniCLOT PT Excel S	18	23.228	4.9	0.33
Biolabo Bio-TP (Low ISI)	17	21.624	4.2	0.27
Teco TEClot PT-S	15	17.093	7.9	0.44



Analyte	Mean for Comparison	Your Result	SDI	RMSDI	%DEV	RM%DEV	TS	RMTS	Performance
D-Dimer (Pilot)	20226.744	20330.000	0.02	Too Few	0.5	Too Few	120	Too Few	
Fibrinogen	177.211	168.000	-0.48	Too Few	-5.2	Too Few	103	Too Few	
Antithrombin III activity	68.417	62.000	-0.81	Too Few	-9.4	Too Few	87	Too Few	
aPTT as a ratio	1.637	1.540	-0.53	Too Few	-5.9	Too Few	107	Too Few	
aPTT in seconds	40.819	37.800	-0.66	Too Few	-7.4	Too Few	97	Too Few	
PT as an INR	1.240	1.260	0.14	Too Few	1.6	Too Few	120	Too Few	
PT activity	66.828	65.500	-0.15	Too Few	-2.0	Too Few	120	Too Few	
PT in seconds	13.954	13.300	-0.60	Too Few	-4.7	Too Few	94	Too Few	

ORMSDI N/A

ORM%DEV N/A

ORMTS N/A

END OF REPORT