

Laboratorio Emotest s.r.l.

COAGULATION

CYCLE 15 SAMPLE 4

Explanation of codes used in this report

R - Results removed due to reconstitution error
N - No result returned
C - Result corrected

Authorised by: Stephen Doherty, RIQAS Manager

Issue No: 1

Issue Date: 18/04/2023

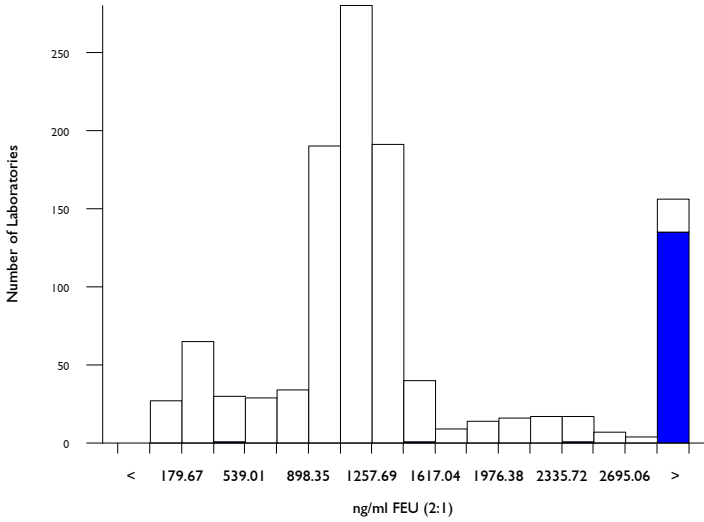
Randox Laboratories Limited
55 Diamond Road
CRUMLIN BT29 4QY
Tel: +44 (0)28 9445 4399
Fax: +44 (0)28 9445 4398
Email: mail@riqas.com

D-Dimer (Pilot), ng/ml FEU (2:1)

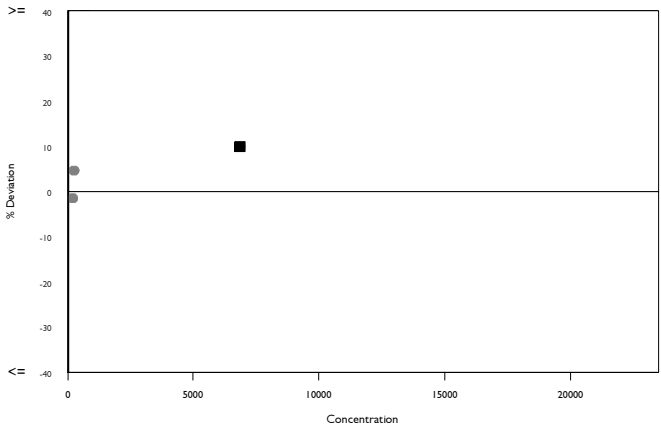
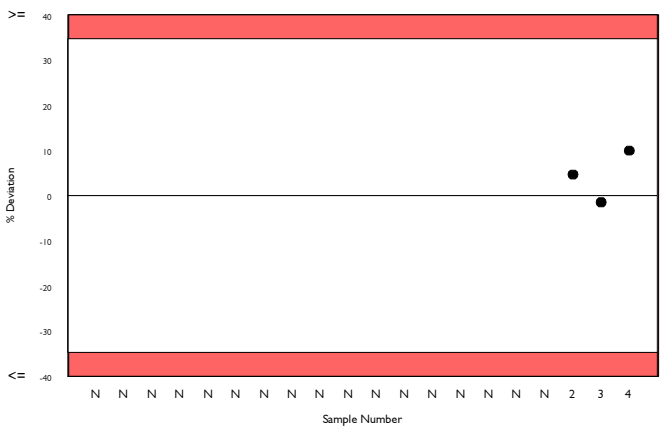
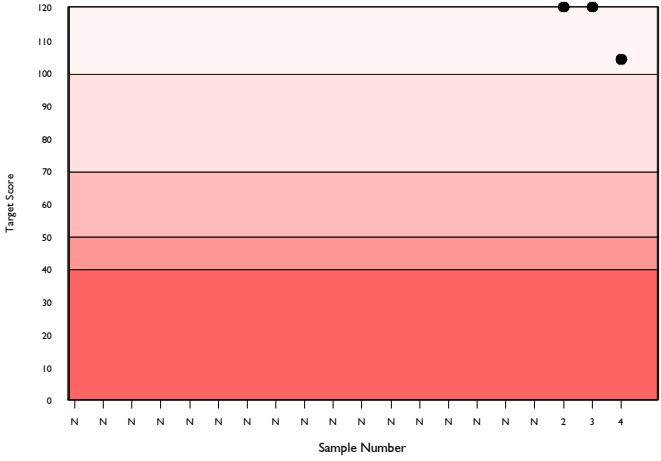
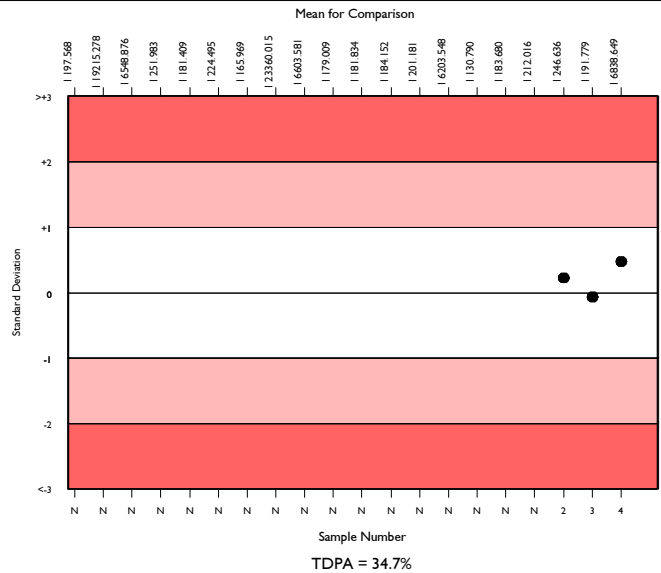
	N	Mean	CV%	U _m	SDPA	Exc.
All Methods	959	1188.011	47.3	22.69	250.62	177
Biomerieux VIDAS Exclusion II	124	6838.649	6.2	47.30	1442.69	14
Biomerieux Vidas/miniVidas/Vidas 3	124	6838.649	6.2	47.30	1442.69	14

▲ Your Result	7519.000	SDI	0.47
		RMSDI	Too Few
■ Mean for Comparison	6838.649	TS	104
		RMTS	Too Few
		%DEV	9.9
		RM%DEV	Too Few

Acceptable limits derived from Biological Variation	N/A
Acceptable limits of performance for RIQAS	34.70%



Method	N	Mean	CV%	U _m
Siemens Innovance D-Dimer	295	1198.918	8.3	7.28
HemosIL D-Dimer HS 500	148	1049.689	9.2	9.88
Stago Sta Liatest D-Di/Plus	117	1338.910	4.6	7.14
Biomerieux VIDAS Exclusion II	124	6838.649	6.2	47.30
HemosIL D-Dimer	44	980.613	23.8	43.96
HemosIL D-Dimer HS	41	995.942	7.2	14.08
Roche Cobas D-Di 2	28	289.375	21.9	14.98
Roche Cobas h232 D-Dimer	14	269.429	13.8	12.44
HemosIL D-Dimer 500	9	1041.889	8.1	35.11
Roche Cobas t511/t711 D-Di2	11	229.455	6.4	5.54
ImproGen D-Dimer	10	287.370	25.5	29.01
Diagon D-Dimer	10	836.200	19.7	65.02
Siemens Immulite 2000 D-Dimer	10	1934.500	21.8	166.65
Finicare D-Dimer	9	1802.222	38.9	291.75
Roche Integra D-Di 2	10	377.273	20.7	30.88
Abbott Architect/Alinity Quantia D-Dimer	8	1328.453	2.3	13.30
Roche Cobas h232 D-Dimer	7	1848.571	10.6	92.88
Beckman AU D-Dimer	6	192.417	63.0	61.82
Kinetic Latex Turbidimetry D-Dimer	6	620.000	0.0	0.00
Siemens D-Dimer Plus	7	2260.000	3.6	38.96
Helena Auto-Red D-Dimer	4	667.500	31.9	133.05

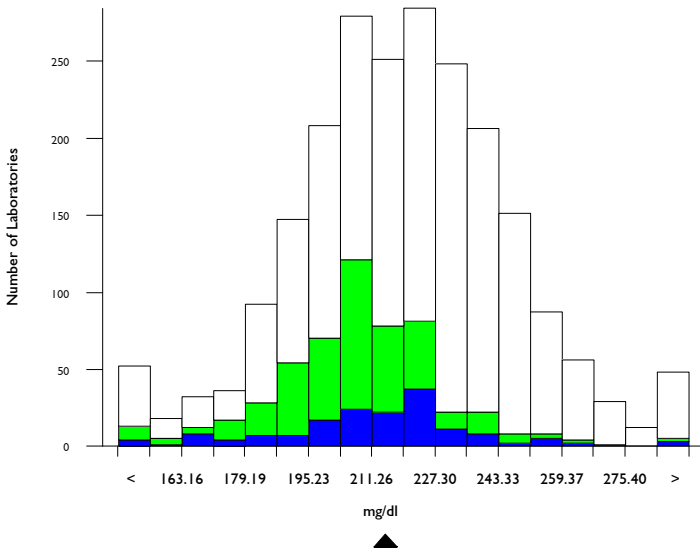


Fibrinogen, mg/dl

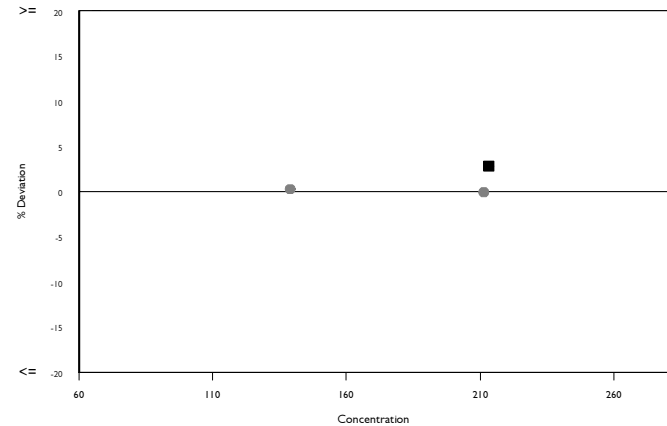
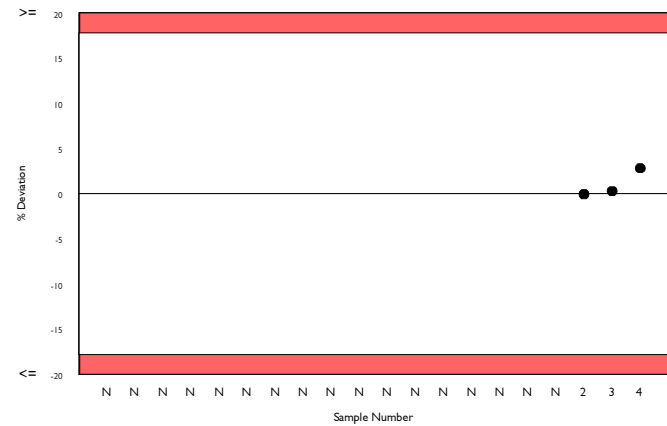
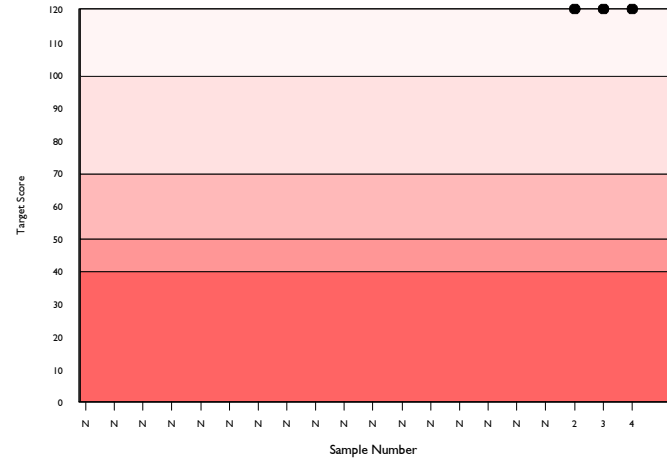
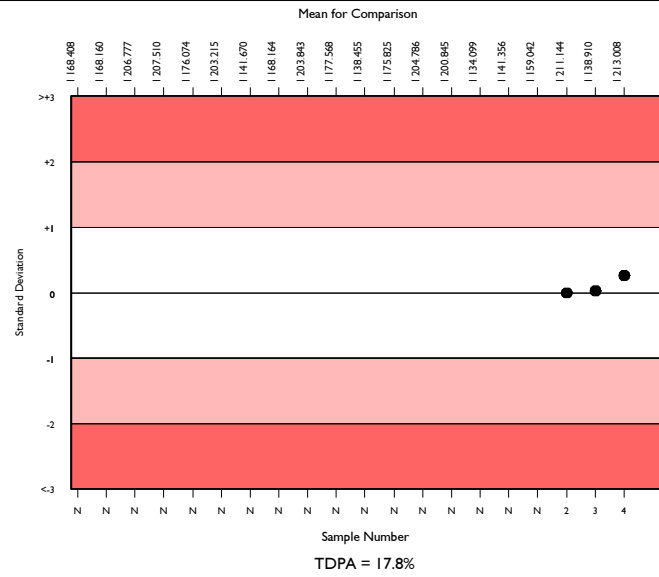
	N	Mean	CV%	U _m	SDPA	Exc.
All Methods	2069	219.286	9.7	0.58	23.73	167
Siemens/Dade Thrombin	504	208.294	7.6	0.88	22.54	45
Sysmex CA 500/600 series	146	213.008	8.5	1.87	23.05	16

▲ Your Result	219.000	SDI	0.26
		RMSDI	Too Few
■ Mean for Comparison	213.008	TS	120
		RMTS	Too Few
		%DEV	2.8
		RM%DEV	Too Few

Acceptable limits derived from Biological Variation	N/A
Acceptable limits of performance for RIQAS	17.80%



Method	N	Mean	CV%	U _m
Siemens/Dade Thrombin	504	208.294	7.6	0.88
Stago Fibrinogen/ Liquid-Fib	388	237.283	5.1	0.76
HemosIL QFA (bovine thrombin)	241	209.882	9.5	1.60
HemosIL Fibrinogen C	214	223.476	7.1	1.36
Siemens/Dade Multifibren U	213	208.512	7.8	1.38
HemosIL RecombiPlasTin 2G	34	210.759	7.5	3.39
Sclavo Fibrinogen	37	237.357	6.9	3.36
Diagon Dia-FIB	30	205.030	13.1	6.14
Biolabo Bio-Fibri	22	221.546	11.1	6.54
Helena Clauss Fibrinogen 100	20	250.985	5.1	3.60
HemosIL PT-Fibrinogen HS Plus	22	225.286	12.6	7.54
Roche Cobas t511/t711 Fibrinogen	22	232.227	6.3	3.89
Mindray/Longisland Fibrinogen	21	214.381	7.0	4.06
Human Fibrinogen	18	246.657	5.8	4.23
Technoclone Fibrinogen	19	246.474	10.2	7.24
Tcoag TriniCLOT Fibrinogen	15	240.233	6.6	5.08
Bio-Ksel Fibrinogen	16	229.750	8.4	6.01
Labitec Fibrinogen	15	223.513	15.8	11.36
Siemens/Dade Innovin derived Fibrinogen	14	165.400	23.8	13.14
Roche Cobas t411 Fibrinogen	13	223.231	4.2	3.23
Teco Teclot Fibrinogen	11	211.091	4.5	3.54

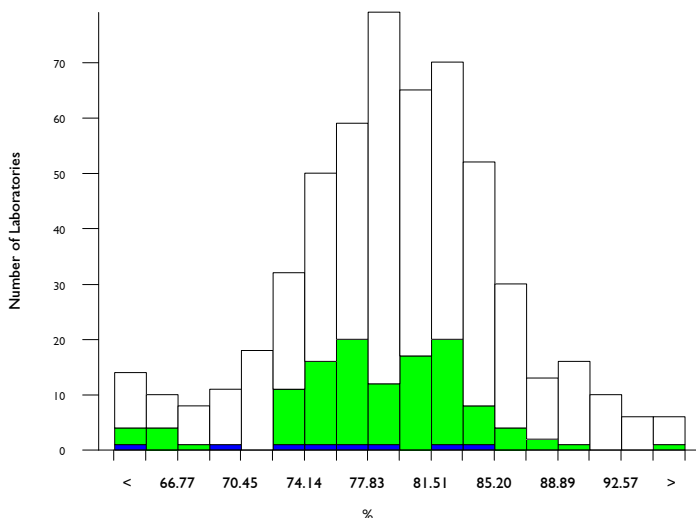


Antithrombin III activity, %

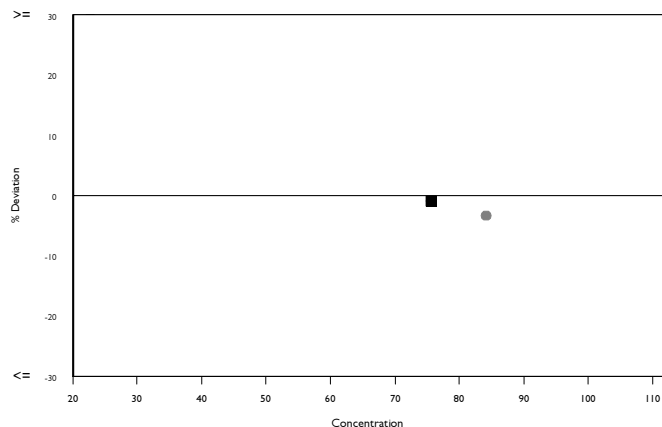
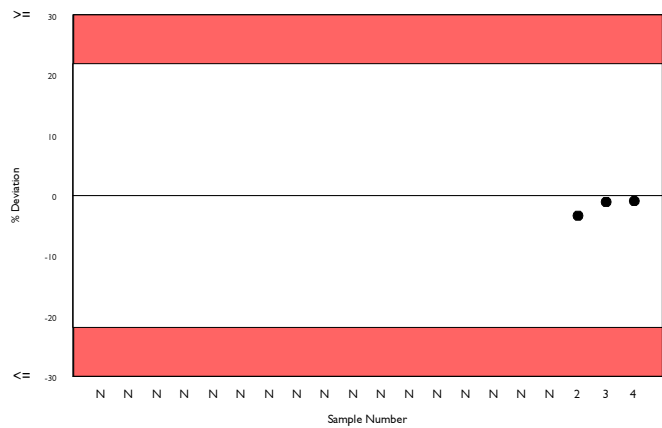
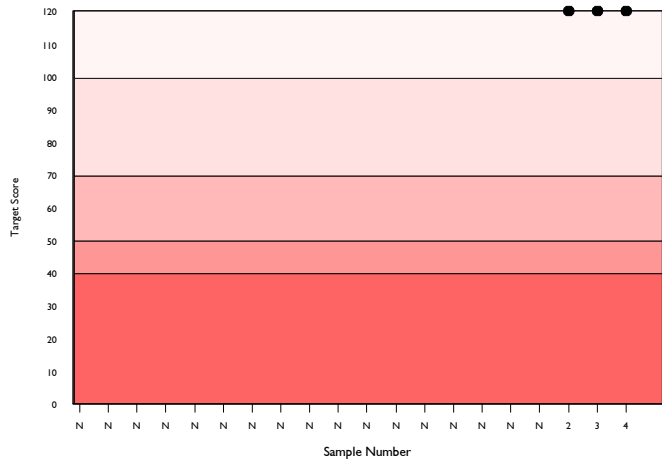
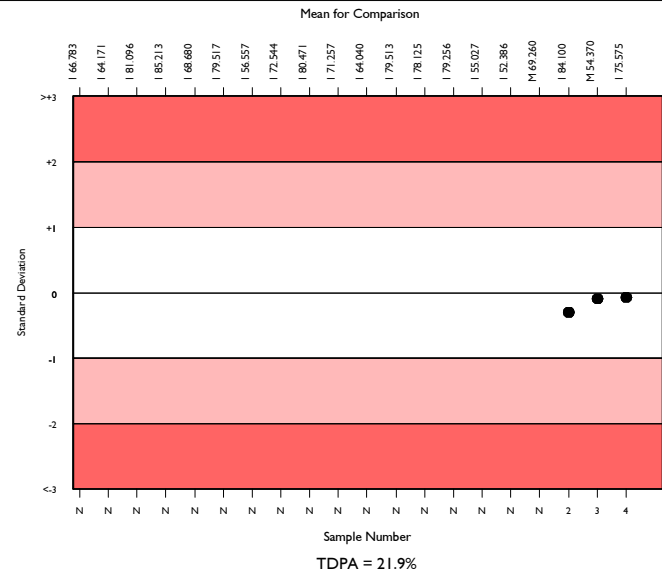
	N	Mean	CV%	U _m	SDPA	Exc.
All Methods	505	79.674	6.2	0.27	8.72	44
Siemens/Dade Berichrom ATIII	110	78.931	4.8	0.45	8.64	12
Sysmex CA 500/600 series	8	75.575	8.5	2.83	8.74a	0

▲ Your Result	74.900	SDI RMSDI	-0.08 Too Few
■ Mean for Comparison	75.575	TS RMTS	120 Too Few
		%DEV RM%DEV	-0.9 Too Few

Acceptable limits derived from Biological Variation	N/A
Acceptable limits of performance for RIQAS	21.90%



Method	N	Mean	CV%	U _m
HemosL Liquid Antithrombin	167	79.243	5.2	0.40
Siemens/Dade Berichrom ATIII	110	78.931	4.8	0.45
Siemens Innovance Antithrombin III	84	79.934	6.6	0.71
STACHrom ATIII	62	84.660	5.2	0.70
Scavo ATIII	22	75.700	6.8	1.37
Roche Chromogenic Thrombin	13	78.215	7.8	2.13
Siemens/Dade Antithrombin III	10	80.494	5.7	1.80
Roche Antithrombin	9	75.389	4.8	1.50
HaemoDiagnostics Antithrombin III (Fxa)	6	79.825	9.5	3.85
Chromogenix Substrate	4	74.125	13.9	6.42
HemosL Lyophilised Antithrombin	3	77.000	13.7	7.64
Biodevice ATIII	2	86.100	10.0	7.62
Diagon ATIII	2	85.000	6.7	5.00
Tehnologia Standart Antithrombin III	2	86.100	11.3	8.62

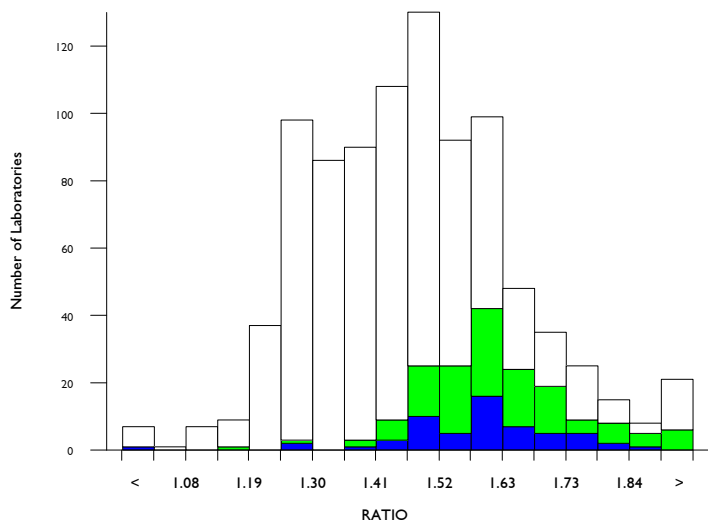


aPTT as a ratio, RATIO

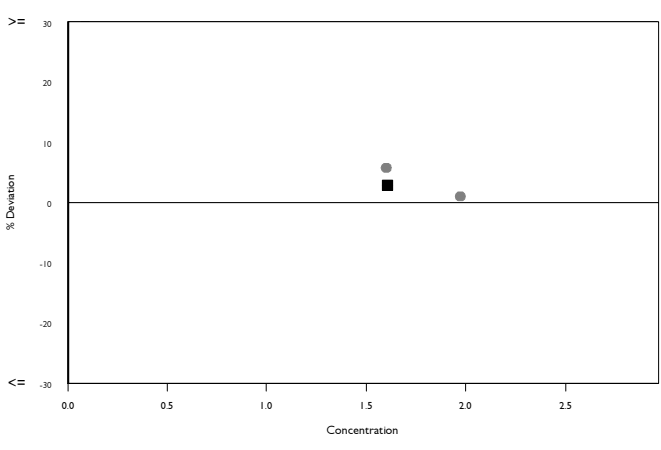
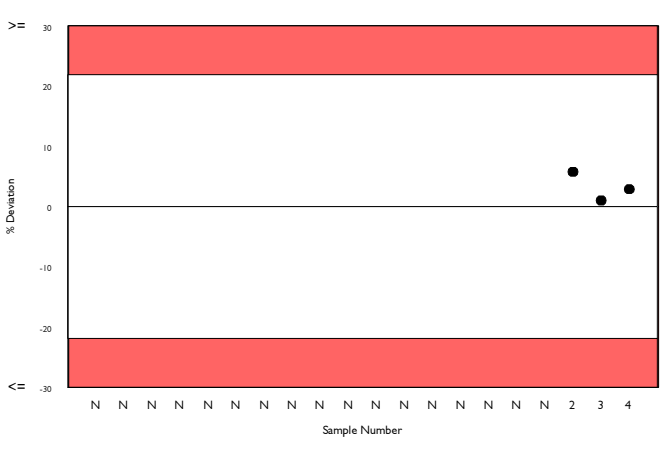
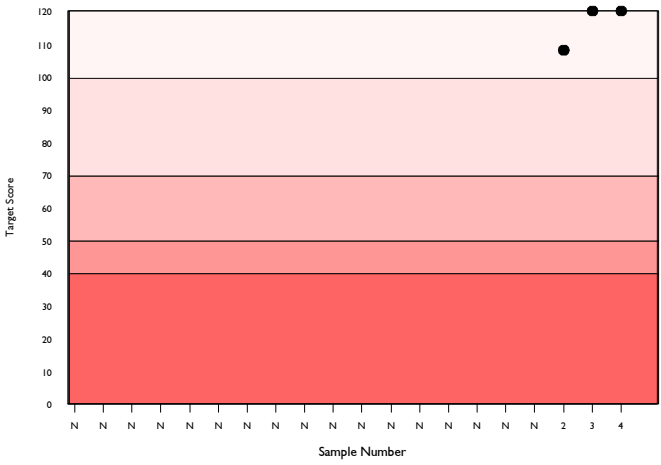
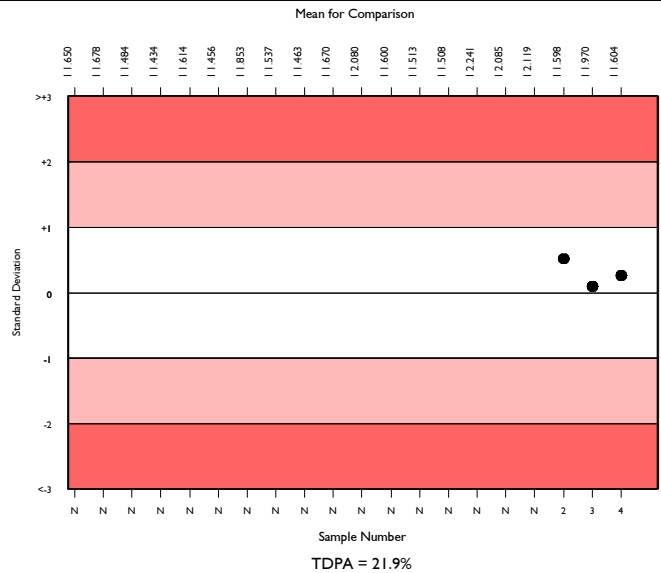
	N	Mean	CV%	U _m	SDPA	Exc.
All Methods	866	1.468	9.9	0.01	0.16	50
Siemens/Dade Actin FS	164	1.606	6.2	0.01	0.18	16
Sysmex CA 500/600 series	54	1.604	6.3	0.02	0.18	4

▲ Your Result	1.650	SDI	0.26
		RMSDI	Too Few
■ Mean for Comparison	1.604	TS	120
		RMTS	Too Few
		%DEV	2.9
		RM%DEV	Too Few

Acceptable limits derived from Biological Variation	N/A
Acceptable limits of performance for RIQAS	21.90%



Method	N	Mean	CV%	U _m
Siemens/Dade Actin FS	164	1.606	6.2	0.01
HemosIL Synthasil	142	1.415	6.2	0.01
HemosIL APTT-SP liquid	100	1.298	4.4	0.01
Siemens/Dade Actin FSL	89	1.375	5.7	0.01
Stago CK Prest	53	1.552	4.8	0.01
Siemens/Dade Pathromtin SL	52	1.624	6.2	0.02
Stago PTT Automate	40	1.429	5.7	0.02
Stago Cephascreen	25	1.473	5.7	0.02
Sclavo APTT-S	18	1.500	5.0	0.02
Helena aPTT Si L Minus	18	1.394	10.8	0.04
Stago aPTT	14	1.518	5.4	0.03
Human Hemostat APTT	11	1.444	6.2	0.03
Labitec aPTT	13	1.383	18.8	0.09
Erba Actime APTT	9	1.426	7.3	0.04
Bio-Ksel System APTTs	9	1.263	5.8	0.03
Biolabo Bio-CK APTT	6	1.557	11.0	0.09
Tcoag TriniCLOT aPTT S	6	1.423	9.9	0.07
MTI Diagnostics APTT	5	1.542	3.3	0.03
Diagon Dia-PTT Lyophilised	5	1.472	9.4	0.08
Media IVD aPTT	5	1.356	12.0	0.09
Siemens/Dade Actin SL	4	1.573	5.8	0.06

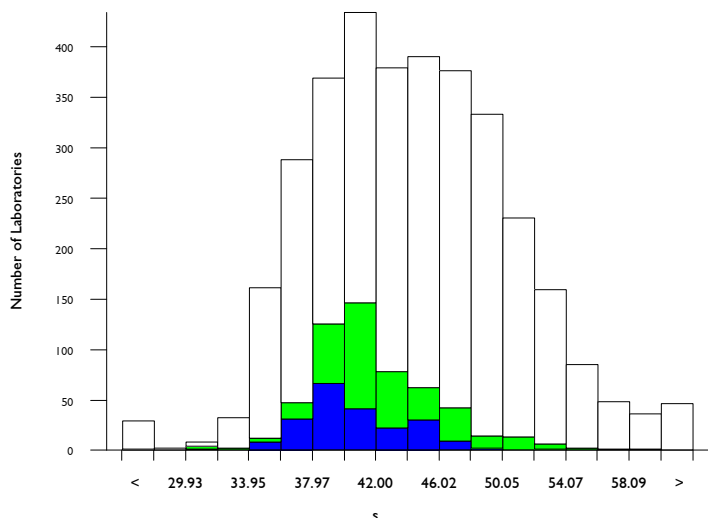


aPTT in seconds, s

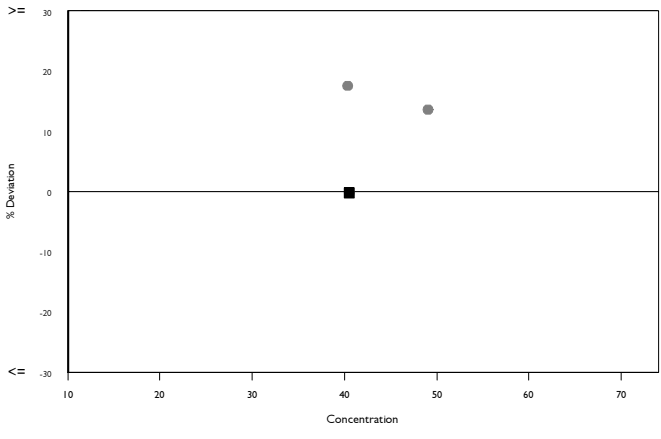
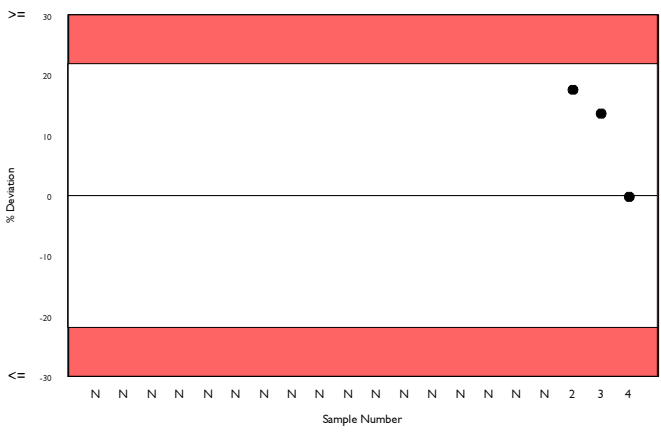
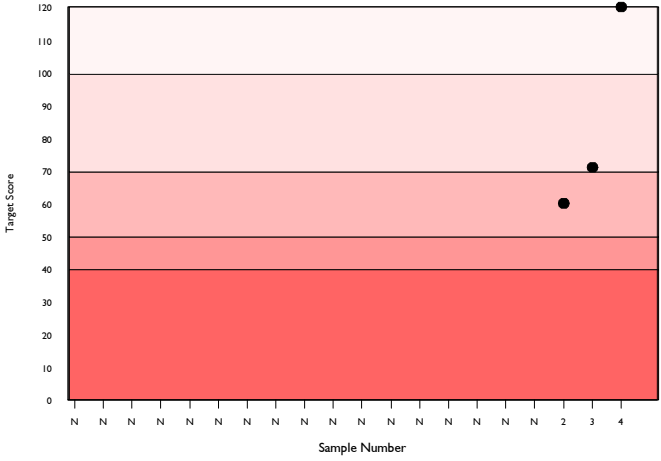
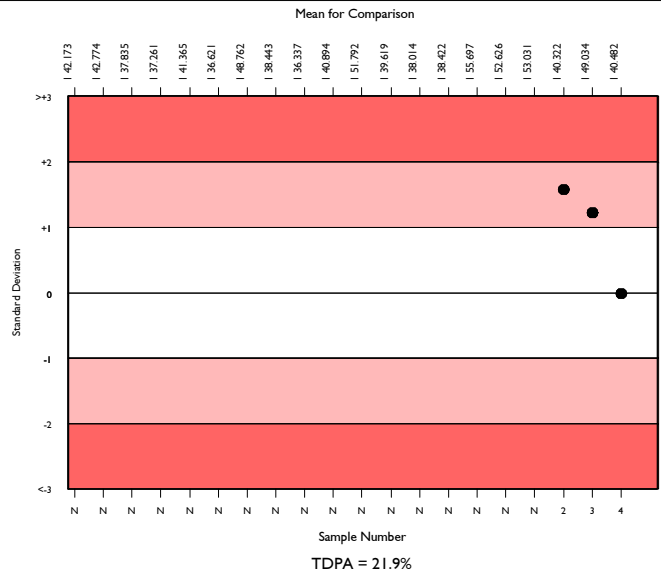
	N	Mean	CV%	U _m	SDPA	Exc.
All Methods	3239	44.015	12.2	0.12	4.92	168
Siemens/Dade Actin FS	521	41.421	7.5	0.17	4.63	35
Sysmex CA 500/600 series	202	40.482	7.1	0.25	4.52	9

▲ Your Result	40.400	SDI	-0.02
		RMSDI	Too Few
■ Mean for Comparison	40.482	TS	120
		RMTS	Too Few
		%DEV	-0.2
		RM%DEV	Too Few

Acceptable limits derived from Biological Variation	N/A
Acceptable limits of performance for RIQAS	21.90%



Method	N	Mean	CV%	U _m
Siemens/Dade Actin FS	521	41.421	7.5	0.17
Stago CK Prest	364	48.214	6.8	0.21
HemosIL Synthasil	360	43.461	5.7	0.16
Siemens/Dade Actin FSL	315	36.655	6.1	0.16
Siemens/Dade Pathromtin SL	296	52.167	6.1	0.23
HemosIL APTT-SP liquid	275	38.645	4.3	0.12
Stago PTT Automate	149	48.861	5.0	0.25
Stago Cephascreen	97	46.287	6.1	0.36
Stago aPTT	79	48.143	4.8	0.32
Human Hemostat APTT	50	43.720	8.9	0.69
Sclavo APTT-S	37	42.986	4.4	0.39
Beijing Succeder aPTT	35	48.080	7.7	0.78
Helena aPTT Si L Minus	32	39.815	6.3	0.56
Roche Cobas APTT	29	46.807	8.0	0.87
Biolabo Bio-CK APTT	26	45.377	11.3	1.26
Teco TEClot APTT	27	43.711	10.5	1.10
Cobas aPTT MedS	24	48.720	6.3	0.78
Siemens/Dade Actin	26	45.478	11.1	1.24
Labitec aPTT	25	46.396	9.3	1.08
Bio-Ksel System APTTs	22	44.386	3.1	0.37
Diagon Dia-PTT Liquid	21	43.647	7.4	0.88

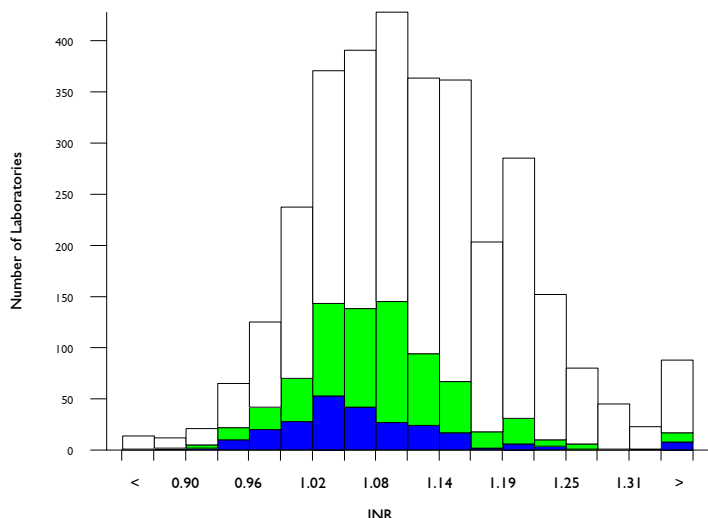


PT as an INR, INR

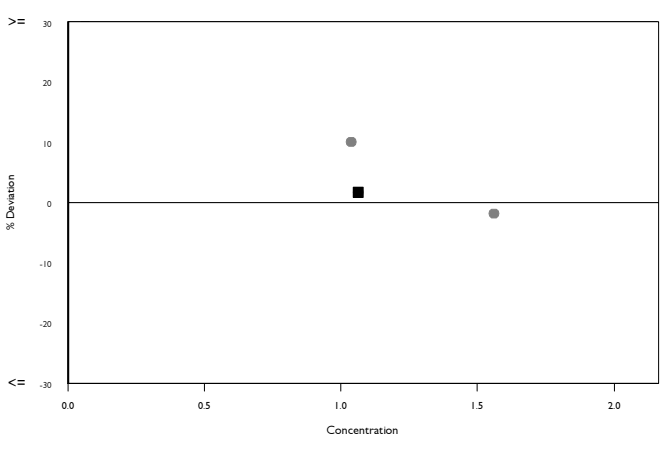
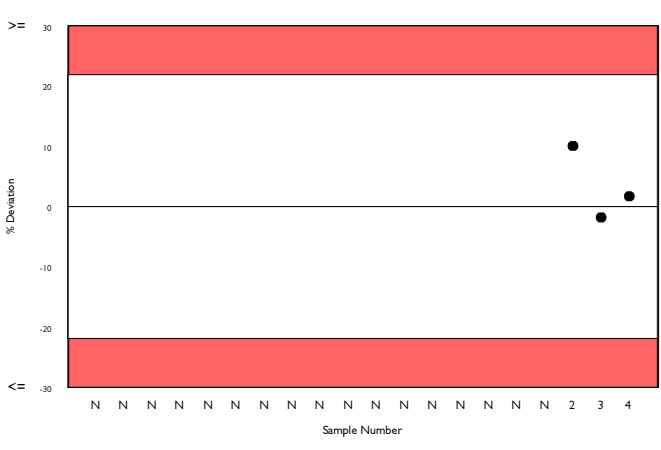
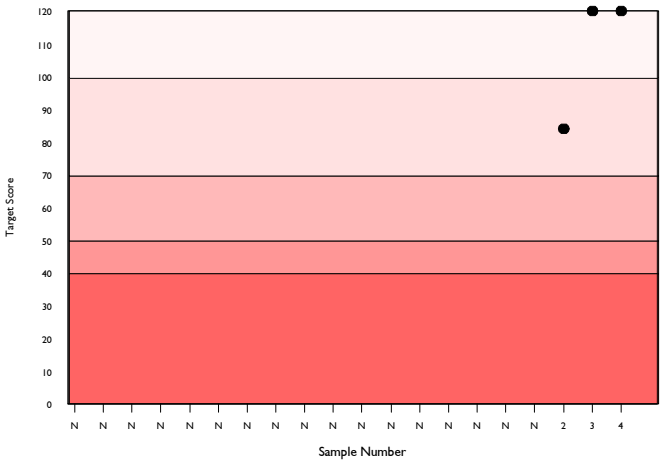
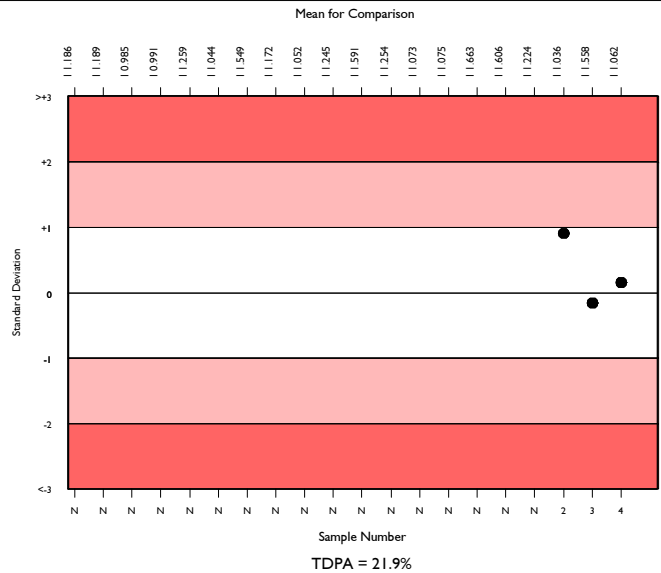
	N	Mean	CV%	U _m	SDPA	Exc.
All Methods	3071	1.112	7.0	0.00	0.12	192
Siemens/Dade Thromborel S	762	1.080	5.4	0.00	0.12	51
Sysmex CA 500/600 series	230	1.062	5.8	0.01	0.12	17

▲ Your Result	1.080	SDI	0.15
		RMSDI	Too Few
■ Mean for Comparison	1.062	TS	120
		RMST	Too Few
		%DEV	1.7
		RM%DEV	Too Few

Acceptable limits derived from Biological Variation	N/A
Acceptable limits of performance for RIQAS	21.90%



Method	N	Mean	CV%	U _m
Siemens/Dade Thromborel S	762	1.080	5.4	0.00
HemosIL RecombiPlasTin 2G	545	1.058	4.1	0.00
Stago STA-NeoPTimal	456	1.191	4.3	0.00
Siemens/Dade Innovin	428	1.160	4.0	0.00
Stago STA Neoplastine CI Plus	170	1.178	4.5	0.01
HemosIL PT-Fibrinogen HS Plus	41	1.052	5.0	0.01
Human Thromboplastin	42	1.090	6.5	0.01
Roche Cobas PT Screen	37	1.150	5.1	0.01
Beijing Succeder PT	38	1.009	6.0	0.01
Sclavo PT	34	1.061	4.3	0.01
Helena Thromboplastin L	33	1.115	5.7	0.01
Stago Neoplastine R	28	1.058	3.6	0.01
Diagon, Dia-PT	23	1.106	6.0	0.02
Roche Cobas PT Rec	25	1.180	2.2	0.01
Mindray/Longisland PT	21	1.117	6.0	0.02
HemosIL ReadiPlasTin	18	1.093	5.1	0.02
Labitec PT	19	1.098	10.2	0.03
Teco TEClot PT-S	17	1.007	4.0	0.01
Bio-Ksel PT Plus	16	1.059	2.6	0.01
Biolabo Bio-TP (Low ISI)	17	1.219	3.3	0.01
Tcoag TriniCLOT PT Excel S	18	1.237	6.3	0.02



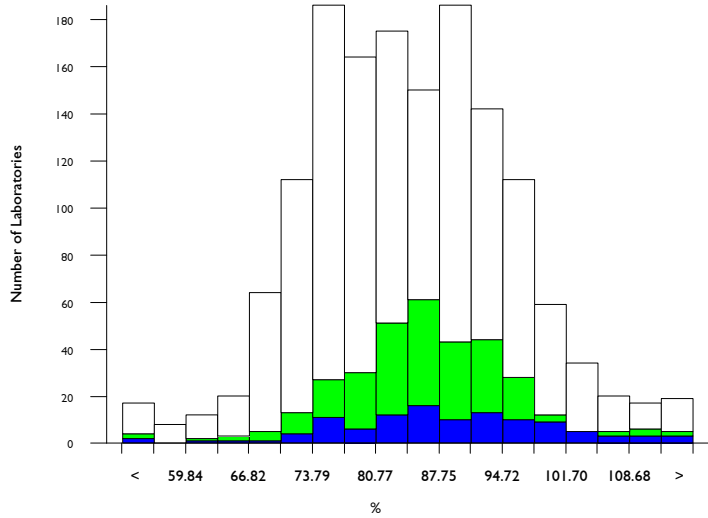
PT activity, %

- All Methods
- Siemens/Dade Thromborel S
- Sysmex CA 500/600 series

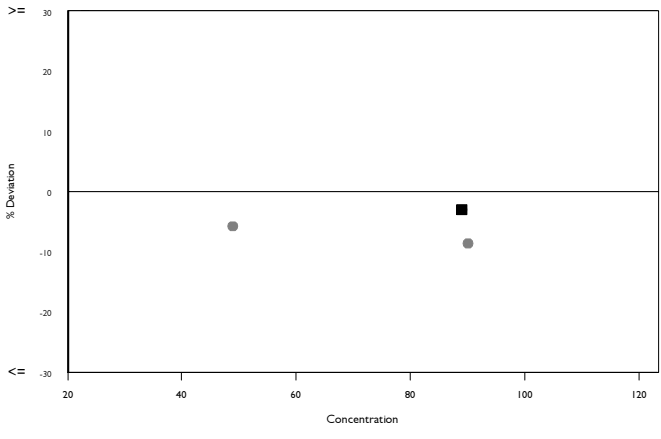
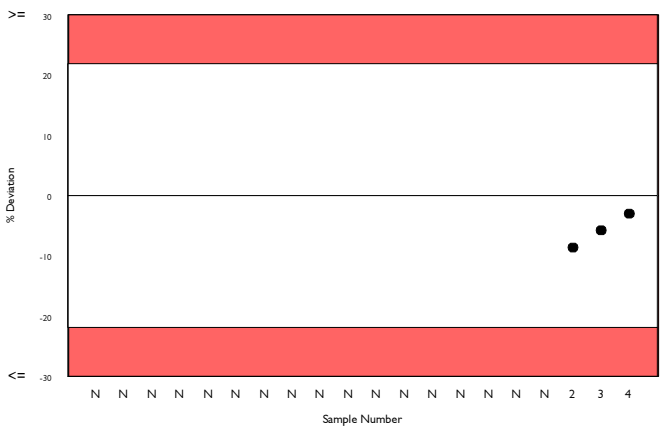
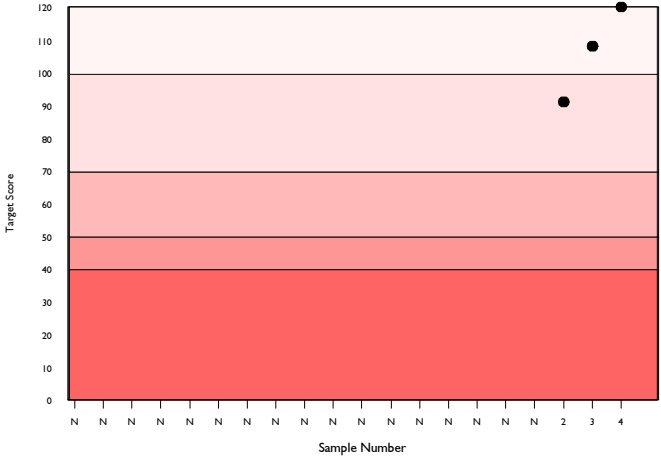
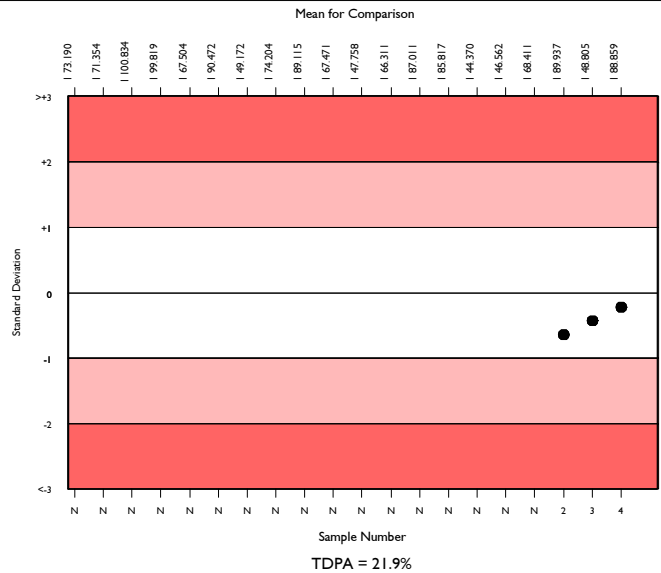
	N	Mean	CV%	U _m	SDPA	Exc.
All Methods	1409	84.263	11.0	0.31	11.22	88
Siemens/Dade Thromborel S	318	86.301	8.8	0.53	11.49	26
Sysmex CA 500/600 series	103	88.859	11.2	1.22	11.83	7

▲ Your Result	86.200	SDI	-0.22
		RMSDI	Too Few
■ Mean for Comparison	88.859	TS	120
		RMTS	Too Few
		%DEV	-3.0
		RM%DEV	Too Few

Acceptable limits derived from Biological Variation	N/A
Acceptable limits of performance for RIQAS	21.90%



Method	N	Mean	CV%	U _m
Siemens/Dade Thromborel S	318	86.301	8.8	0.53
Stago STA-NeoPTimal	284	76.836	5.4	0.31
HemosIL RecombiPlasTin 2G	257	91.122	6.5	0.46
Siemens/Dade Innovin	102	74.514	7.7	0.71
Stago STA Neoplastine CI Plus	47	78.086	5.6	0.79
HemosIL PT-Fibrinogen HS Plus	38	92.415	7.6	1.43
Sclavo PT	28	92.168	5.8	1.27
Helena Thromboplastin L	24	89.842	6.0	1.38
Beijing Succeeder PT	23	107.329	7.1	1.99
Human Thromboplastin	19	91.822	7.7	2.03
Stago Neoplastine R	17	90.412	5.4	1.49
Mindray/Longisland PT	17	78.769	15.1	3.60
Labitec PT	16	82.503	17.5	4.52
Biolabo Bio-TP (Low ISI)	11	74.473	3.8	1.06
Tcoag TriniCLOT PT Excel S	13	68.846	10.0	2.38
Roche Cobas PT Screen	11	84.791	6.9	2.21
Diagon, Dia-PT	12	82.392	11.8	3.50
MTI Diagnostics Prothrombin Time	11	88.882	14.0	4.68
Roche Cobas PT Rec	9	67.822	2.5	0.70
Biolabo Bio-TP	10	80.060	17.8	5.63
Erba Protine PT	9	84.111	8.2	2.86

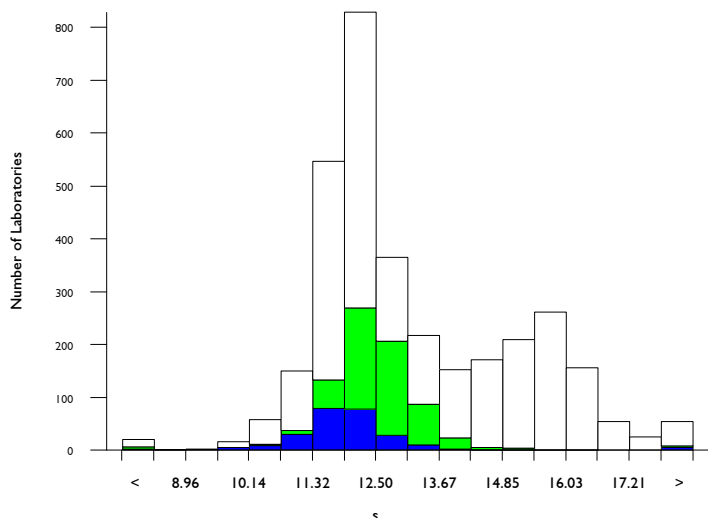


PT in seconds, s

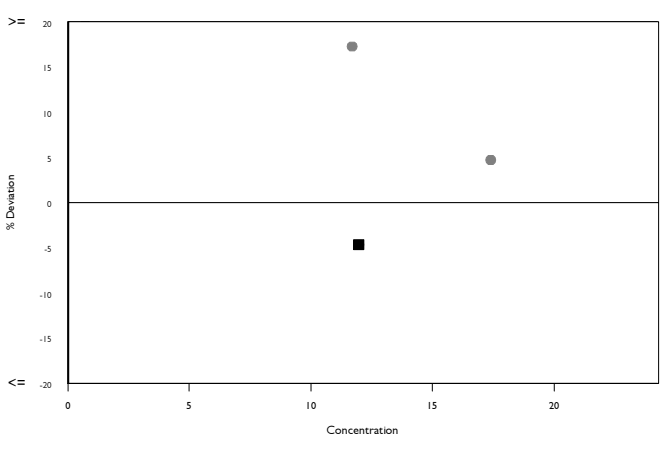
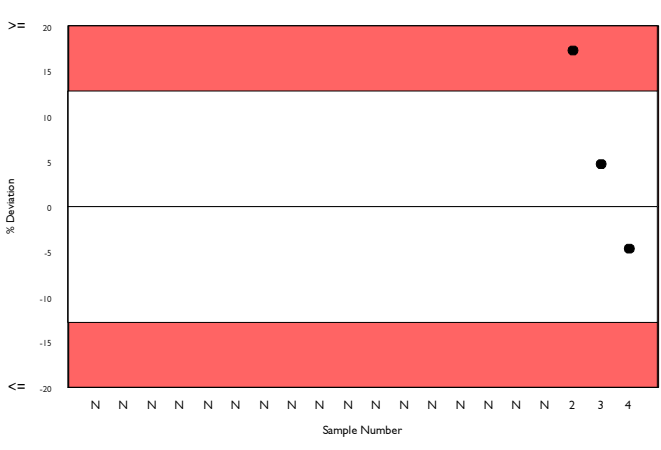
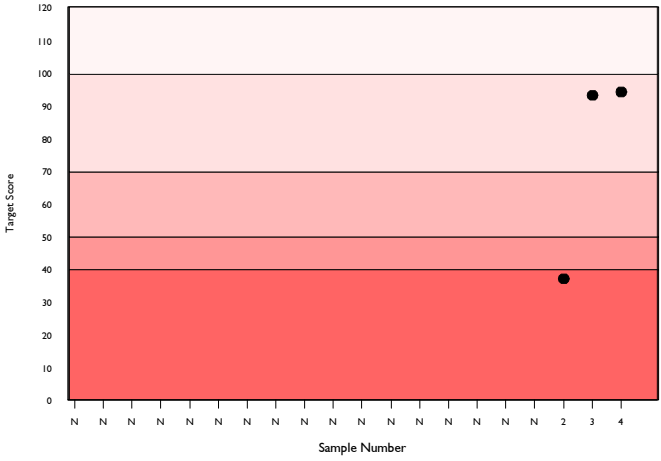
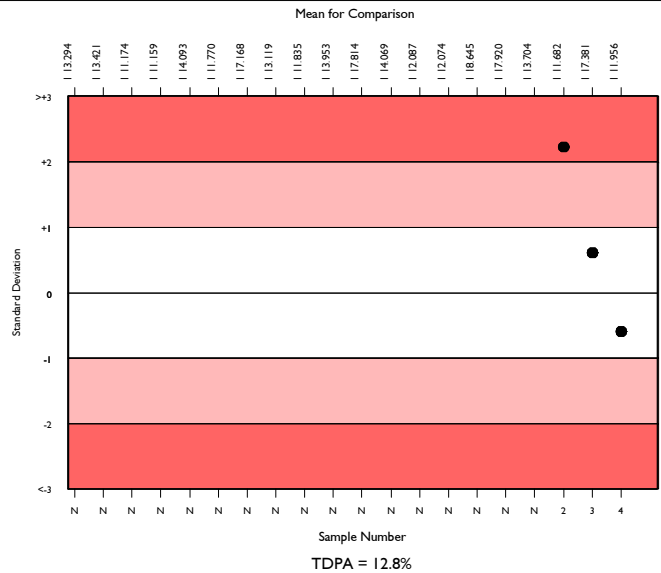
	N	Mean	CV%	U _m	SDPA	Exc.
All Methods	3125	13.090	12.0	0.04	1.02	160
Siemens/Dade Thromborel S	737	12.416	4.7	0.03	0.97	59
Sysmex CA 500/600 series	228	11.956	5.1	0.05	0.93	22

▲ Your Result	11.400	SDI	-0.60
		RMSDI	Too Few
■ Mean for Comparison	11.956	TS	94
		RMTS	Too Few
		%DEV	-4.6
		RM%DEV	Too Few

Acceptable limits derived from Biological Variation	N/A
Acceptable limits of performance for RIQAS	12.80%



Method	N	Mean	CV%	U _m
Siemens/Dade Thromborel S	737	12.416	4.7	0.03
HemosIL RecombiPlasTin 2G	544	11.983	3.6	0.02
Stago STA-NeoPTimal	456	15.818	4.0	0.04
Siemens/Dade Innovin	433	12.011	3.7	0.03
Stago STA Neoplastine CI Plus	189	15.154	4.8	0.07
Human Thromboplastin	44	13.432	4.7	0.12
HemosIL PT-Fibrinogen HS Plus	46	15.151	4.7	0.13
Roche Cobas PT Screen	40	11.868	3.6	0.08
Beijing Succeder PT	38	13.058	5.8	0.15
Helena Thromboplastin L	31	14.116	3.4	0.11
Sclavo PT	27	13.874	3.2	0.11
Diagon, Dia-PT	25	13.518	7.9	0.27
Roche Cobas PT Rec	21	10.571	1.6	0.04
Biolabo Bio-TP	20	14.160	11.9	0.47
HemosIL ReadiPlasTin	23	12.152	3.1	0.10
Stago Neoplastine R	21	14.436	3.3	0.13
Mindray/Longisland PT	20	13.419	5.8	0.22
Labitec PT	19	12.858	6.0	0.22
Tcoag TriniCLOT PT Excel S	18	15.211	3.7	0.17
Teco TEClot PT-S	17	13.368	5.2	0.21
Biolabo Bio-TP (Low ISI)	14	16.300	2.5	0.13



Analyte	Mean for Comparison	Your Result	SDI	RMSDI	%DEV	RM%DEV	TS	RMTS	Performance
D-Dimer (Pilot)	6838.649	7519.000	0.47	Too Few	9.9	Too Few	104	Too Few	
Fibrinogen	213.008	219.000	0.26	Too Few	2.8	Too Few	120	Too Few	
Antithrombin III activity	75.575	74.900	-0.08	Too Few	-0.9	Too Few	120	Too Few	
aPTT as a ratio	1.604	1.650	0.26	Too Few	2.9	Too Few	120	Too Few	
aPTT in seconds	40.482	40.400	-0.02	Too Few	-0.2	Too Few	120	Too Few	
PT as an INR	1.062	1.080	0.15	Too Few	1.7	Too Few	120	Too Few	
PT activity	88.859	86.200	-0.22	Too Few	-3.0	Too Few	120	Too Few	
PT in seconds	11.956	11.400	-0.60	Too Few	-4.6	Too Few	94	Too Few	

ORMSDI N/A

ORM%DEV N/A

ORMTS N/A

END OF REPORT