

Laboratorio Emotest s.r.l.

# COAGULATION

CYCLE 15 SAMPLE 3

## Explanation of codes used in this report

R - Results removed due to reconstitution error  
N - No result returned  
C - Result corrected

Authorised by: Stephen Doherty, RIQAS Manager

Issue No: 1

Issue Date: 21/03/2023

Randox Laboratories Limited  
55 Diamond Road  
CRUMLIN BT29 4QY  
Tel: +44 (0)28 9445 4399  
Fax: +44 (0)28 9445 4398  
Email: mail@riqas.com

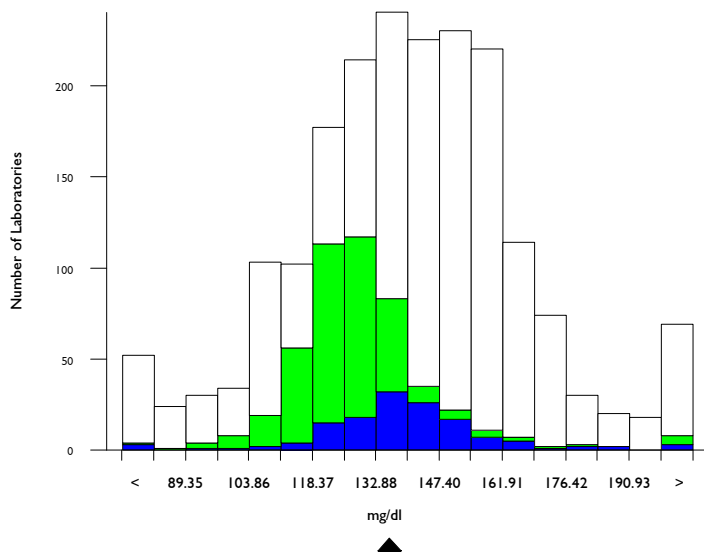


# Fibrinogen, mg/dl

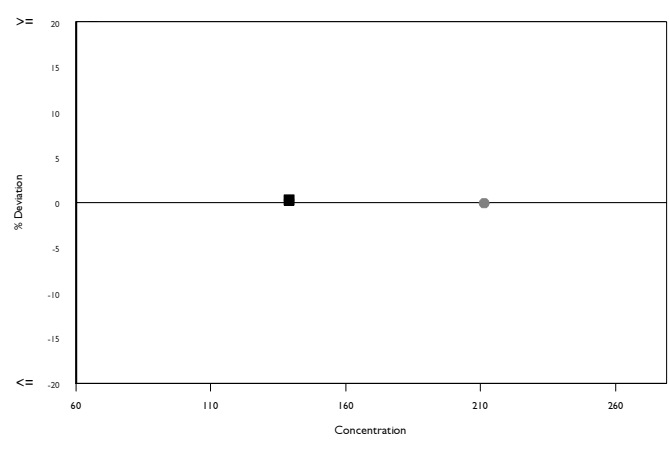
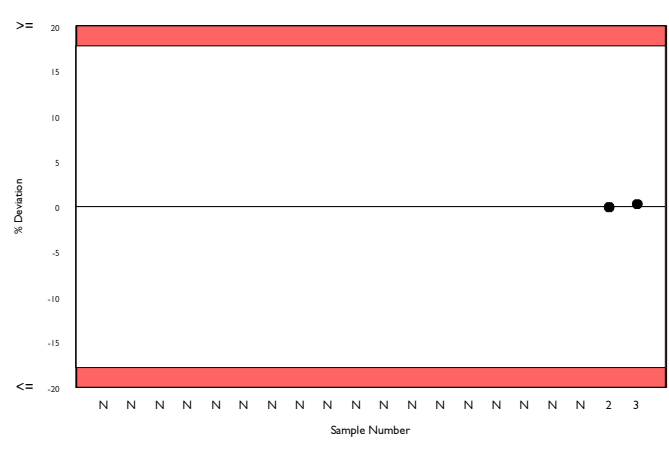
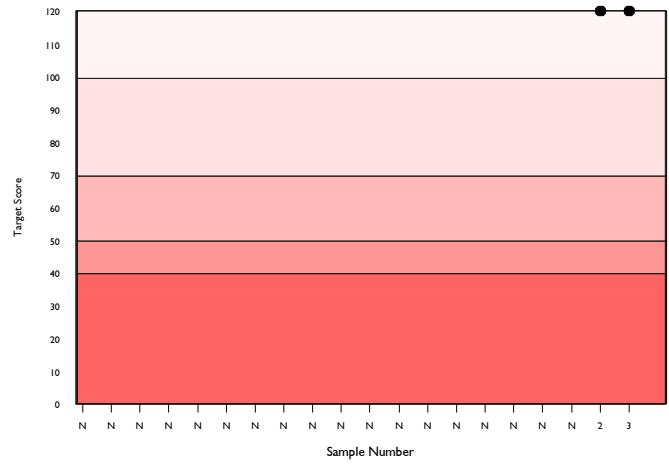
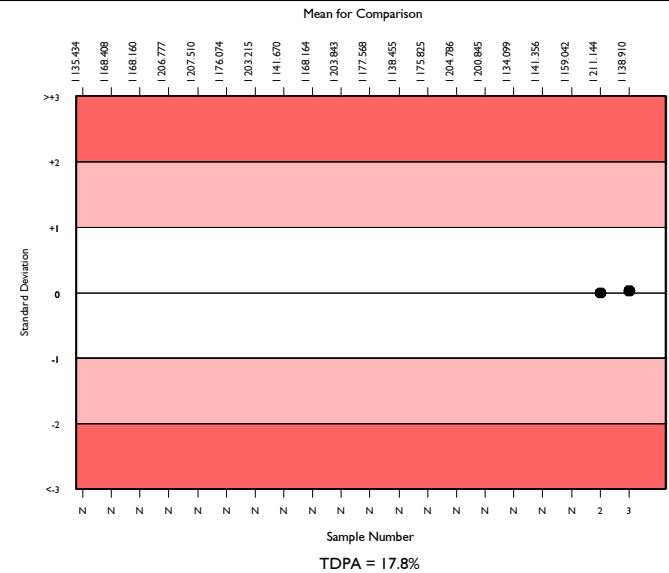
	N	Mean	CV%	U <sub>m</sub>	SDPA	Exc.
All Methods	1794	140.145	13.8	0.57	15.16	188
Siemens/Dade Thrombin	447	128.381	8.2	0.62	13.89	48
Sysmex CA 500/600 series	125	138.910	8.5	1.31	15.03	14

▲ Your Result	139.300	SDI	0.03
		RMSDI	Too Few
■ Mean for Comparison	138.910	TS	120
		RMTS	Too Few
		%DEV	0.3
		RM%DEV	Too Few

Acceptable limits derived from Biological Variation	N/A
Acceptable limits of performance for RIQAS	17.80%



Method	N	Mean	CV%	U <sub>m</sub>
Siemens/Dade Thrombin	447	128.381	8.2	0.62
Stago Fibrinogen/ Liquid-Fib	361	156.006	5.6	0.56
HemosL QFA (bovine thrombin)	218	144.590	9.7	1.19
Siemens/Dade Multifibren U	190	110.679	14.0	1.40
HemosL Fibrinogen C	183	148.054	7.4	1.01
Sclavo Fibrinogen	33	152.024	7.9	2.62
Diagon Dia-FIB	27	128.174	8.3	2.56
HemosL RecombiPlasTin 2G	29	96.696	18.2	4.08
Technoclone Fibrinogen	21	182.667	22.4	11.15
Roche Cobas t511/t711 Fibrinogen	17	137.235	7.1	2.95
HemosL PT-Fibrinogen HS Plus	17	157.641	7.9	3.75
Biolabo Bio-Fibri	15	154.926	15.8	7.89
Bio-Ksel Fibrinogen	15	163.267	6.6	3.50
Siemens/Dade Innovin derived Fibrinogen	13	104.638	25.6	9.29
Mindray/Longisland Fibrinogen	14	142.714	12.7	6.03
Human Fibrinogen	12	175.635	10.7	6.78
Roche Cobas t411 Fibrinogen	14	147.929	8.5	4.20
Tcoag TriniCLOT Fibrinogen	11	153.564	4.4	2.56
Cobas Fibrinogen	10	160.300	3.9	2.44
Stago STA Fibrri-Prest Automate	11	157.455	8.9	5.29
Teco Teclot Fibrinogen	10	136.250	12.1	6.51

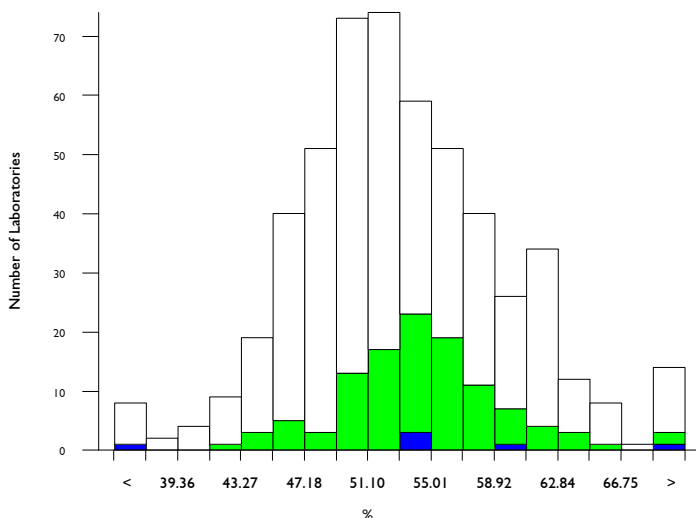


# Antithrombin III activity, %

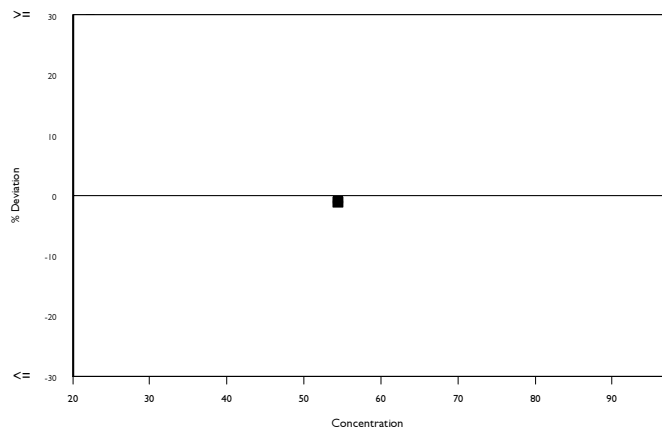
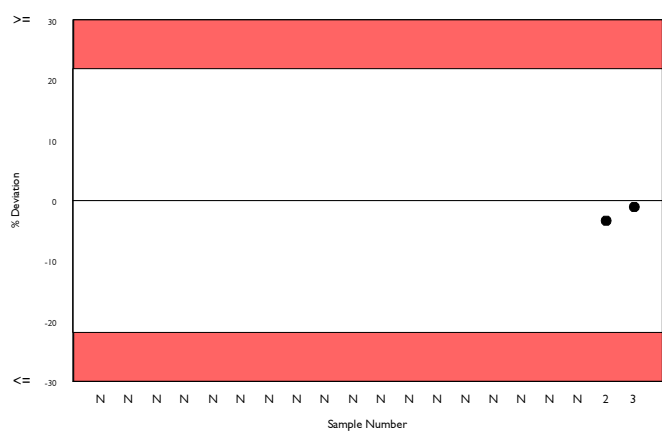
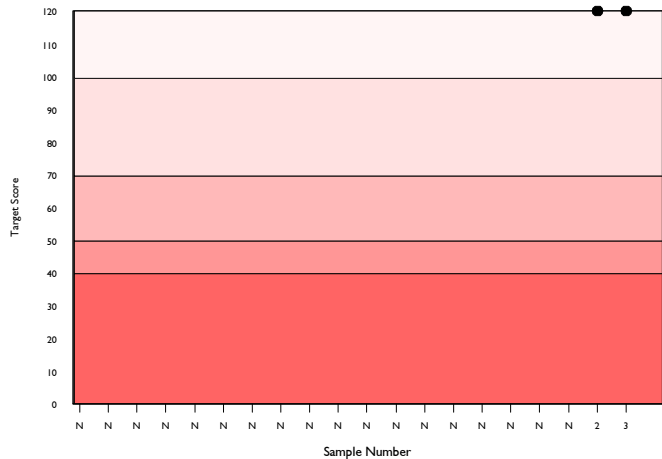
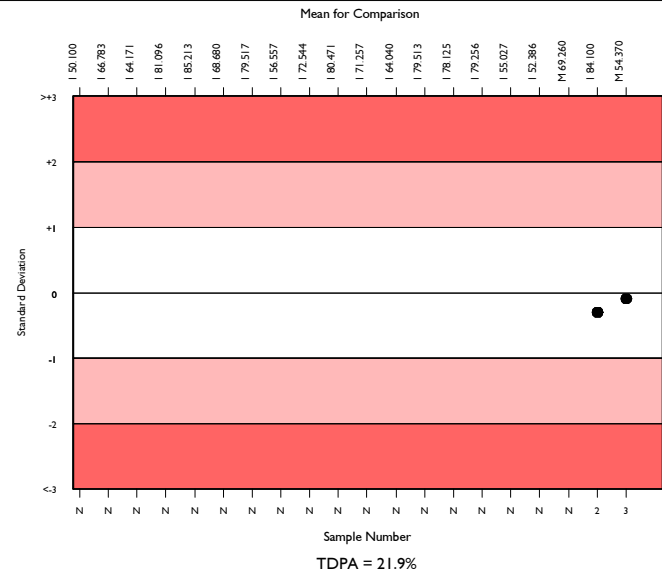
	N	Mean	CV%	U <sub>m</sub>	SDPA	Exc.
All Methods	496	53.059	9.8	0.29	5.81	30
Siemens/Dade Berichrom ATIII	103	54.370	6.8	0.45	5.95	11
Sysmex CA 500/600 series	4	55.575	5.7	1.97	6.40a	2

▲ Your Result	53.800	SDI	-0.10
		RMSDI	Too Few
■ Mean for Comparison	54.370	TS	120
		RMTS	Too Few
		%DEV	-1.0
		RM%DEV	Too Few

Acceptable limits derived from Biological Variation	N/A
Acceptable limits of performance for RIQAS	21.90%



Method	N	Mean	CV%	U <sub>m</sub>
HemosL Liquid Antithrombin	162	49.800	7.7	0.38
Siemens/Dade Berichrom ATIII	103	54.370	6.8	0.45
Siemens Innovance Antithrombin III	76	53.616	6.4	0.49
STACHrom ATIII	66	58.188	7.2	0.65
Sclavo ATIII	17	49.635	8.4	1.27
Siemens/Dade Antithrombin III	12	57.352	15.4	3.18
Roche Chromogenic Thrombin	11	55.673	10.6	2.22
Roche Antithrombin	8	51.613	9.3	2.12
HaemoDiagnostics Antithrombin III (Fxa)	7	58.161	13.5	3.71
Chromogenix Substrate	4	47.875	19.9	5.94
Biodevice ATIII	2	50.050	15.1	6.69
Diagon ATIII	2	55.000	25.7	12.50
Helena Chrom-Z	2	49.300	3.7	1.62
HemosL Lyophilised Antithrombin	2	52.250	11.5	5.31

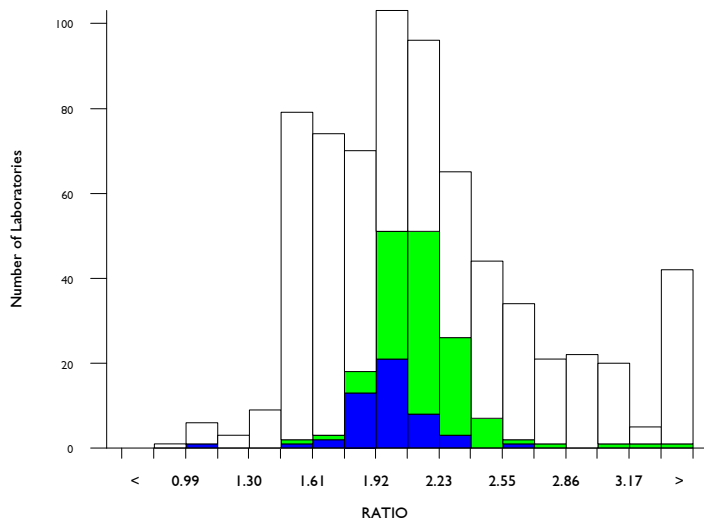


# aPTT as a ratio, RATIO

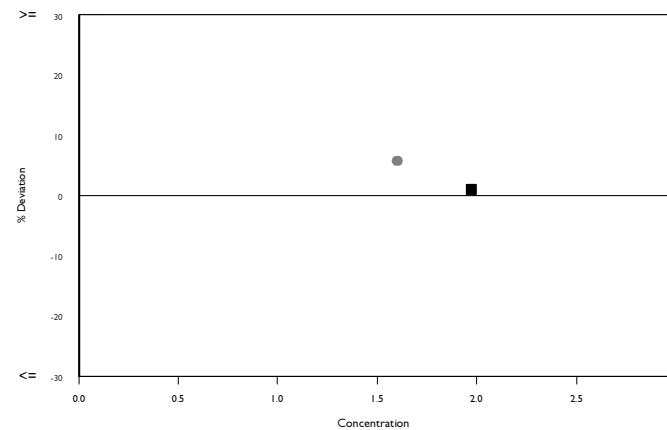
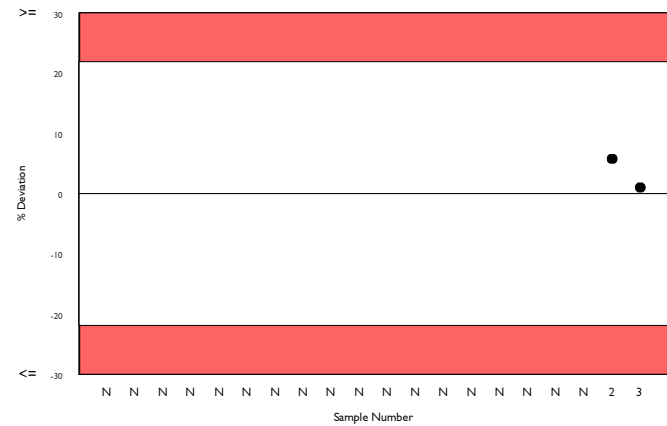
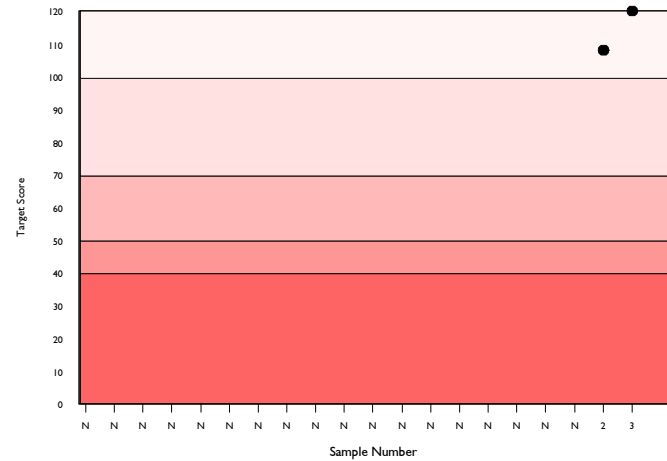
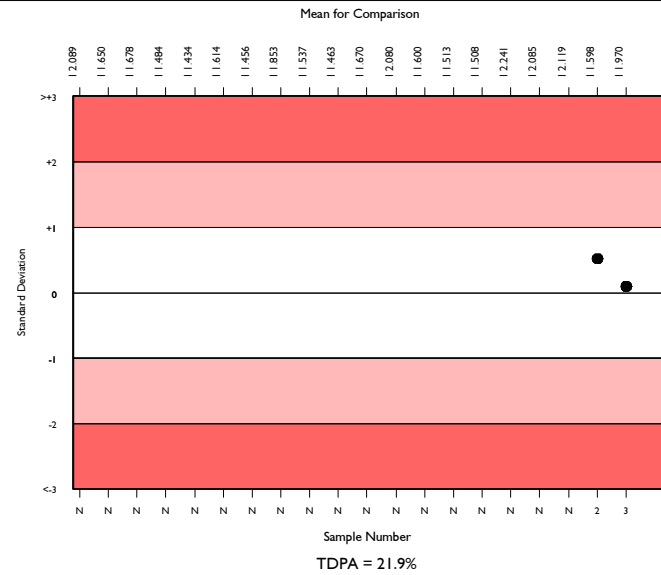
	N	Mean	CV%	U <sub>m</sub>	SDPA	Exc.
All Methods	638	2.083	20.0	0.02	0.23	59
Siemens/Dade Actin FS	151	2.104	7.2	0.02	0.24	14
Sysmex CA 500/600 series	43	1.970	5.9	0.02	0.22	7

▲ Your Result	1.990	SDI	0.09
		RMSDI	Too Few
■ Mean for Comparison	1.970	TS	120
		RMTS	Too Few
		%DEV	1.0
		RM%DEV	Too Few

Acceptable limits derived from Biological Variation	N/A
Acceptable limits of performance for RIQAS	21.90%



Method	N	Mean	CV%	U <sub>m</sub>
Siemens/Dade Actin FS	151	2.104	7.2	0.02
HemosIL Synthasil	103	2.533	11.4	0.04
HemosIL APTT-SP liquid	86	1.588	5.2	0.01
Siemens/Dade Actin FSL	50	1.743	6.0	0.02
Siemens/Dade Pathromtin SL	49	3.379	15.6	0.09
Stago CK Prest	37	2.216	6.1	0.03
Stago PTT Automate	34	1.923	10.0	0.04
Stago Cephascreen	27	1.902	9.1	0.04
Sclavo APTT-S	18	2.828	11.2	0.09
Stago aPTT	13	1.999	11.6	0.08
Bio-Ksel System APTTs	7	1.486	2.4	0.02
Tcoag TriniCLOT aPTT S	8	2.148	12.4	0.12
Diagon Dia-PTT Lyophilised	4	2.190	1.3	0.02
Siemens/Dade Actin SL	4	2.475	14.8	0.23
Diagon Dia-PTT Liquid	3	1.957	3.0	0.04
Human Hemostat APTT	4	2.005	13.7	0.17
Biodevice aPTT	2	1.441	21.5	0.27
HaemoDiagnostics aPTT	3	2.213	15.7	0.25
Mindray/Longisland APTT	3	2.047	10.9	0.16
Roche Cobas APTT	3	3.517	15.5	0.39
Dutch Diagnostics aPTT	2	1.510	35.6	0.47

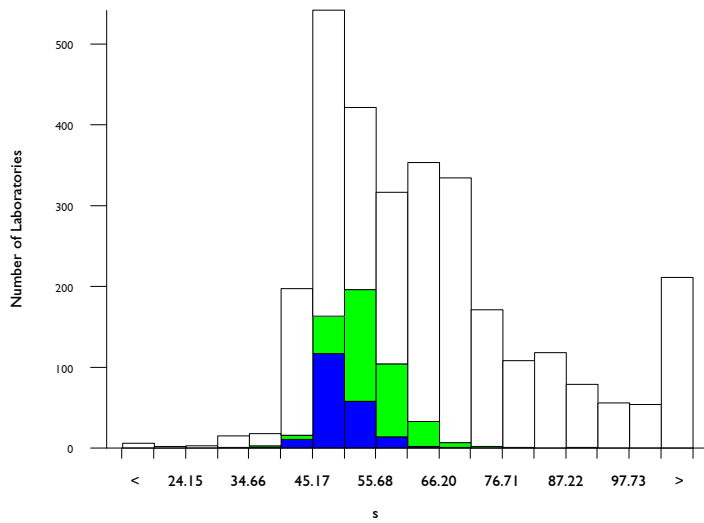


# aPTT in seconds, s

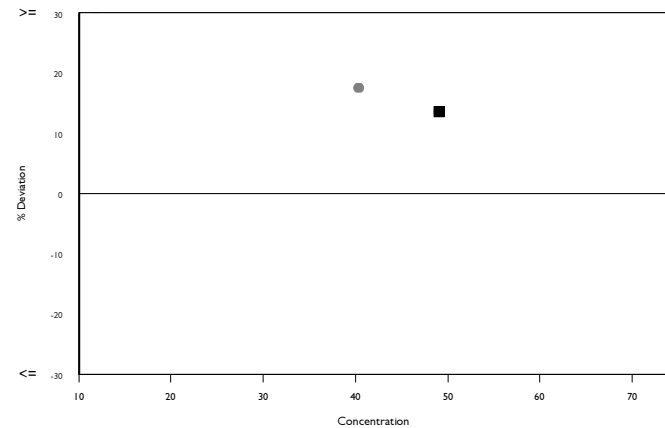
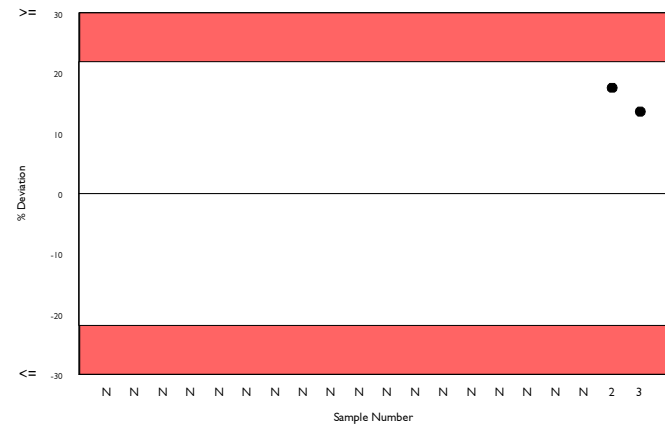
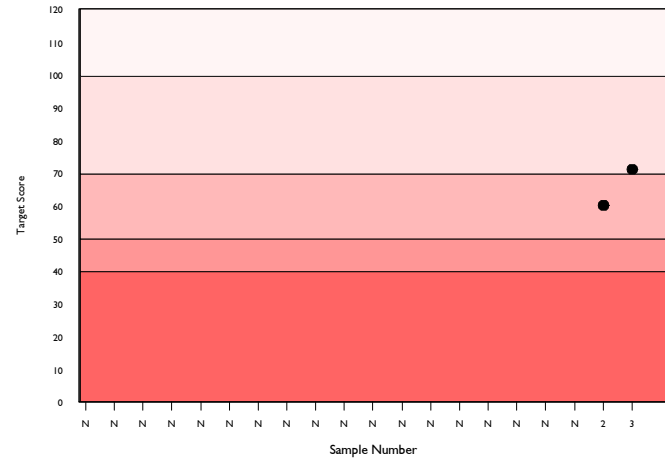
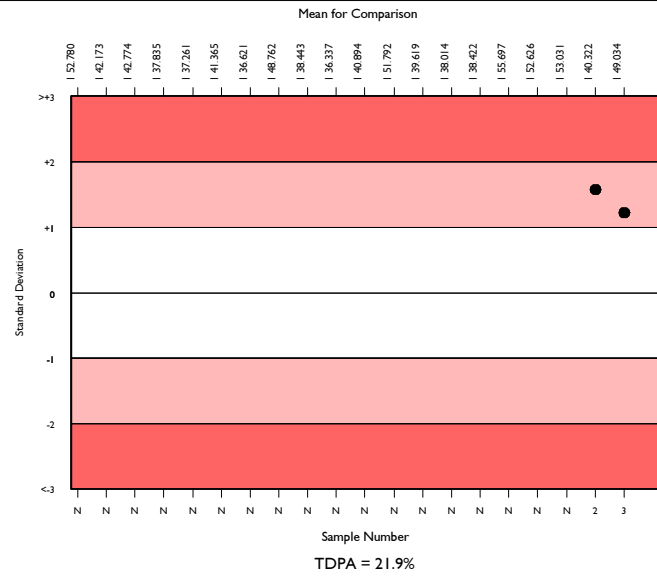
	N	Mean	CV%	U <sub>m</sub>	SDPA	Exc.
All Methods	2758	60.946	23.0	0.33	6.81	260
Siemens/Dade Actin FS	495	52.375	8.7	0.26	5.85	32
Sysmex CA 500/600 series	192	49.034	6.3	0.28	5.48	12

▲ Your Result	55.700	SDI	1.22
		RMSDI	Too Few
■ Mean for Comparison	49.034	TS	71
		RMTS	Too Few
		%DEV	13.6
		RM%DEV	Too Few

Acceptable limits derived from Biological Variation	N/A
Acceptable limits of performance for RIQAS	21.90%



Method	N	Mean	CV%	U <sub>m</sub>
Siemens/Dade Actin FS	495	52.375	8.7	0.26
Stago CK Prest	327	67.375	7.3	0.34
HemosIL Synthasil	289	76.112	13.8	0.77
Siemens/Dade Pathromtin SL	279	108.157	13.8	1.11
Siemens/Dade Actin FSL	270	46.813	6.9	0.24
HemosIL APTT-SP liquid	258	46.930	6.1	0.22
Stago PTT Automate	124	66.402	6.0	0.45
Stago Cephascreen	105	60.615	10.8	0.80
Stago aPTT	73	65.498	8.1	0.78
Human Hemostat APTT	36	62.532	17.0	2.21
Sclavo APTT-S	35	81.391	9.8	1.69
Beijing Succeder aPTT	32	56.899	7.2	0.90
Diagon Dia-PTT Liquid	25	54.056	6.1	0.83
Roche Cobas APTT	29	72.590	26.0	4.38
Siemens/Dade Actin	26	56.169	10.8	1.49
Bio-Ksel System APTTs	23	50.639	4.3	0.56
Cobas aPTT MedS	24	96.017	18.5	4.53
Biolabo Bio-CK APTT	23	58.379	16.4	2.49
Tcoag TriniCLOT aPTT S	23	67.865	10.1	1.78
Teco TEClot APTT	18	69.267	15.4	3.15
Diagon Dia-PTT Lyophilised	18	67.894	19.9	3.99

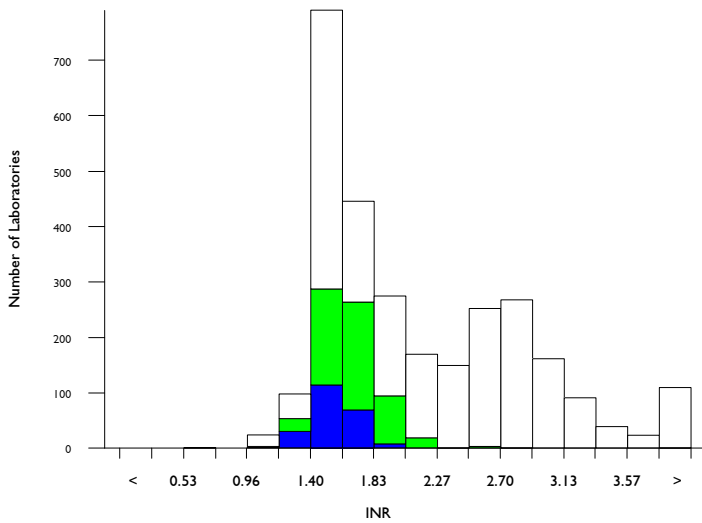


# PT as an INR, INR

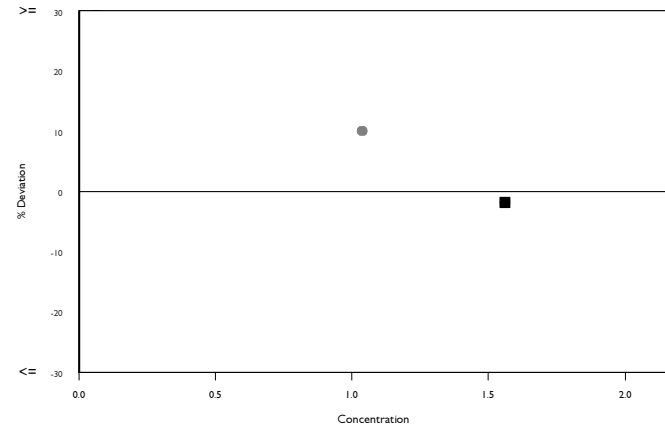
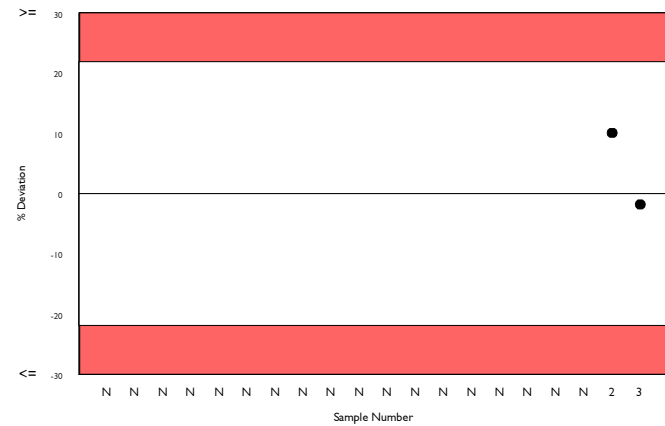
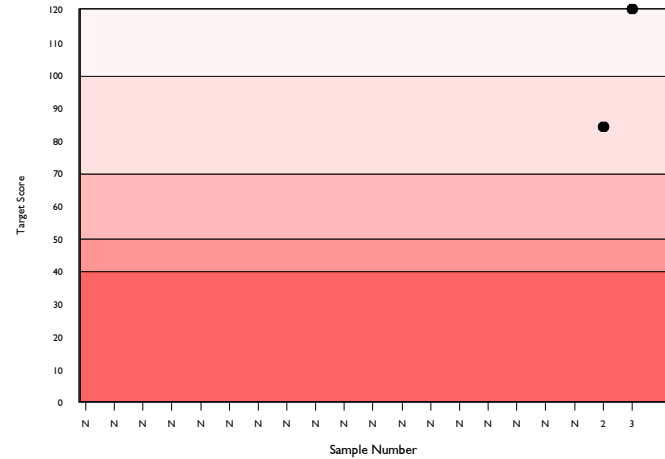
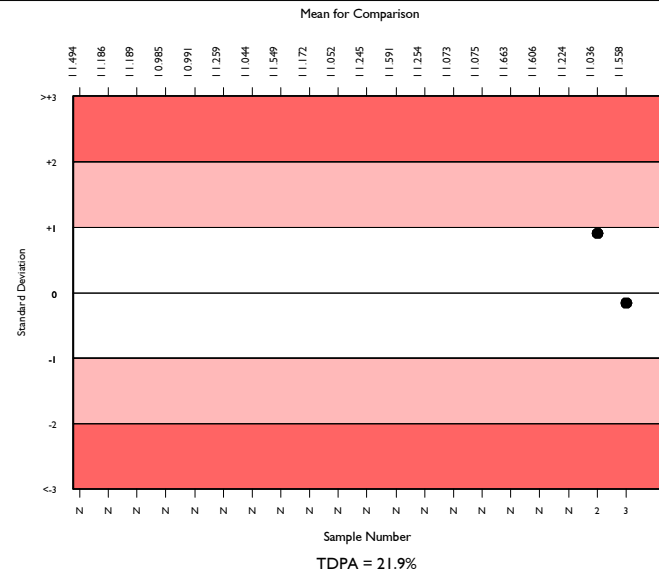
	N	Mean	CV%	U <sub>m</sub>	SDPA	Exc.
All Methods	2732	2.054	28.2	0.01	0.23	162
Siemens/Dade Thromborel S	682	1.631	9.5	0.01	0.18	45
Sysmex CA 500/600 series	211	1.558	8.1	0.01	0.17	14

▲ Your Result	1.530	SDI	-0.16
		RMSDI	Too Few
■ Mean for Comparison	1.558	TS	120
		RMTS	Too Few
		%DEV	-1.8
		RM%DEV	Too Few

Acceptable limits derived from Biological Variation	N/A
Acceptable limits of performance for RIQAS	21.90%



Method	N	Mean	CV%	U <sub>m</sub>
Siemens/Dade Thromborel S	682	1.631	9.5	0.01
HemosIL RecombiPlasTin 2G	490	1.542	4.6	0.00
Siemens/Dade Innovin	403	2.897	9.8	0.02
Stago STA-NeoPTimal	392	2.669	9.5	0.02
Stago Neoplastine CI Plus	158	2.085	12.7	0.03
HemosIL PT-Fibrinogen HS Plus	40	2.067	8.4	0.03
Roche Cobas PT Screen	32	1.898	4.4	0.02
Beijing Succeeder PT	30	1.578	7.5	0.03
Sclavo PT	31	2.164	6.2	0.03
Diagon, Dia-PT	29	2.013	26.6	0.12
Human Thromboplastin	29	2.764	32.5	0.21
Stago Neoplastine R	27	1.437	3.7	0.01
Roche Cobas PT Rec	24	3.935	27.3	0.27
HemosIL ReadiPlasTin	18	1.601	4.7	0.02
Mindray/Longisland PT	15	1.899	8.1	0.05
Bio-Ksel PT Plus	18	1.509	5.0	0.02
Tcoag TriniCLOT PT Excel S	17	4.286	16.8	0.22
Biolabo Bio-TP (Low ISI)	15	2.465	8.7	0.07
Helena Thromboplastin L	17	2.595	19.2	0.15
Technoclone Technoplastin HIS	12	1.756	4.2	0.03
Teco TEClot PT-S	9	1.958	6.5	0.05

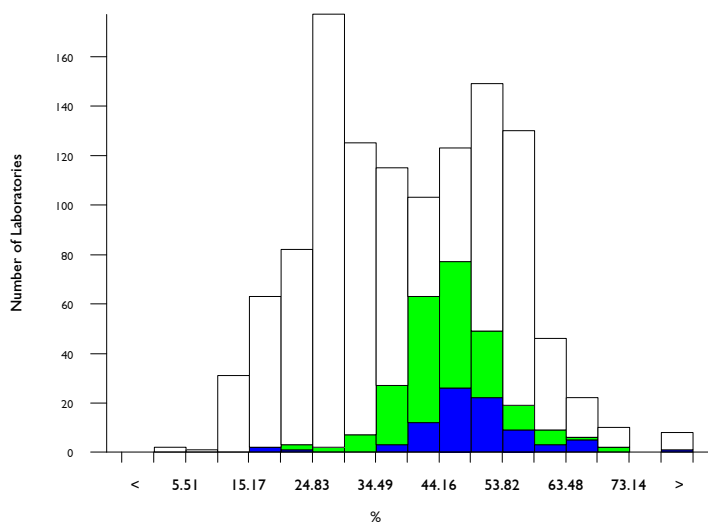


# PT activity, %

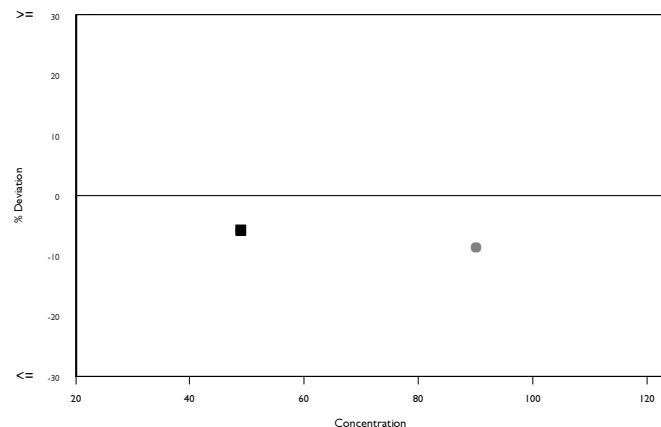
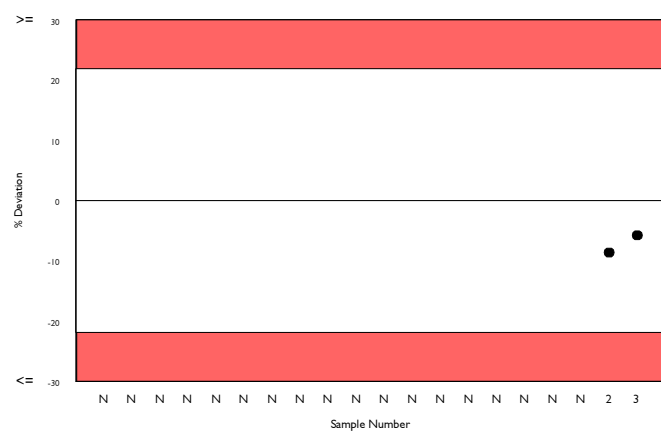
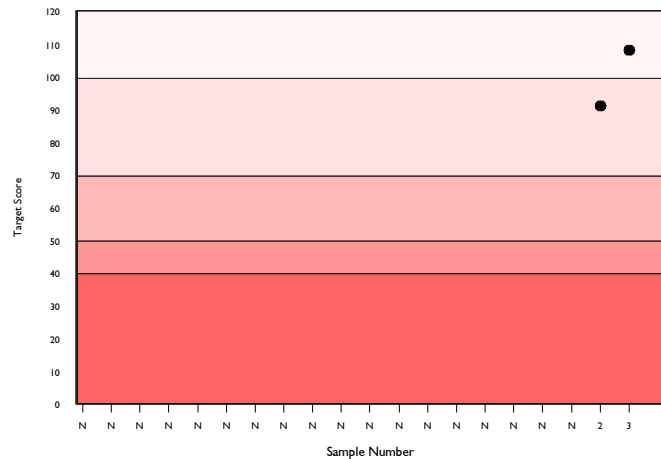
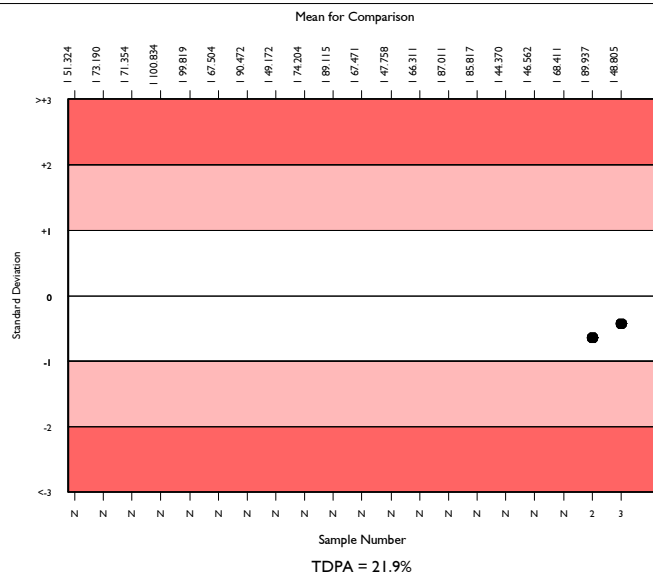
	N	Mean	CV%	U <sub>m</sub>	SDPA	Exc.
All Methods	1143	39.330	32.8	0.48	5.24	44
Siemens/Dade Thromborel S	245	45.681	12.7	0.46	6.08	22
Sysmex CA 500/600 series	74	48.805	10.4	0.74	6.50	10

▲ Your Result	46.000	SDI	-0.43
		RMSDI	Too Few
■ Mean for Comparison	48.805	TS	108
		RMTS	Too Few
		%DEV	-5.7
		RM%DEV	Too Few

Acceptable limits derived from Biological Variation	N/A
Acceptable limits of performance for RIQAS	21.90%



Method	N	Mean	CV%	U <sub>m</sub>
Siemens/Dade Thromborel S	245	45.681	12.7	0.46
Stago STA-NeoPTimal	226	27.990	10.1	0.23
HemosIL RecombiPlasTin 2G	214	53.200	7.3	0.33
Siemens/Dade Innovin	73	20.092	10.4	0.30
Stago Neoplastine CI Plus	38	36.445	12.4	0.92
HemosIL PT-Fibrinogen HS Plus	36	35.209	11.0	0.81
Sclavo PT	21	35.967	5.7	0.56
Beijing Succeeder PT	17	60.845	10.1	1.86
Stago Neoplastine R	18	52.722	6.3	0.97
Diagon, Dia-PT	10	38.840	11.7	1.79
Biolabo Bio-TP (Low ISI)	13	33.915	13.4	1.58
Mindray/Longisland PT	13	43.707	28.1	4.26
Human Thromboplastin	9	20.460	25.5	2.17
Tcoag TriniCLOT PT Excel S	12	15.683	20.8	1.18
Roche Cobas PT Screen	9	42.122	6.4	1.12
Helena Thromboplastin L	8	31.863	17.4	2.45
HemosIL ReadPlasTin	8	56.125	13.6	3.37
Roche Cobas PT Rec	9	13.211	13.6	0.75
Diagon, Dia-PT R	7	27.071	26.1	3.34
Stago Neoplastine CI	5	30.140	15.1	2.54
Stago SPA	5	60.280	9.1	3.07



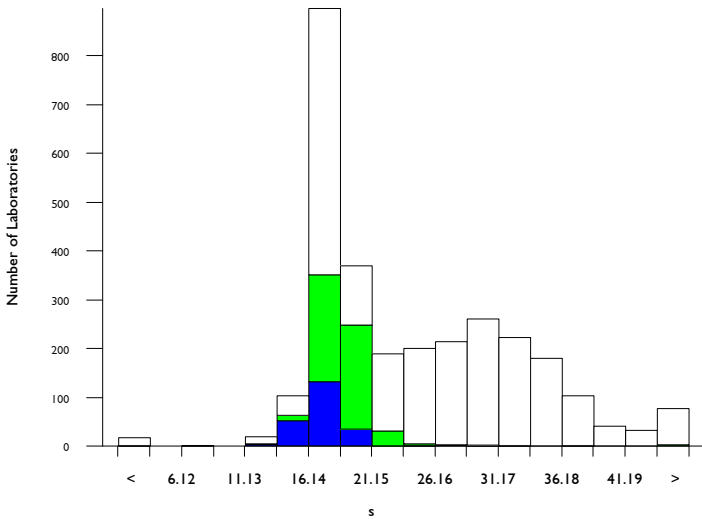


# PT in seconds, s

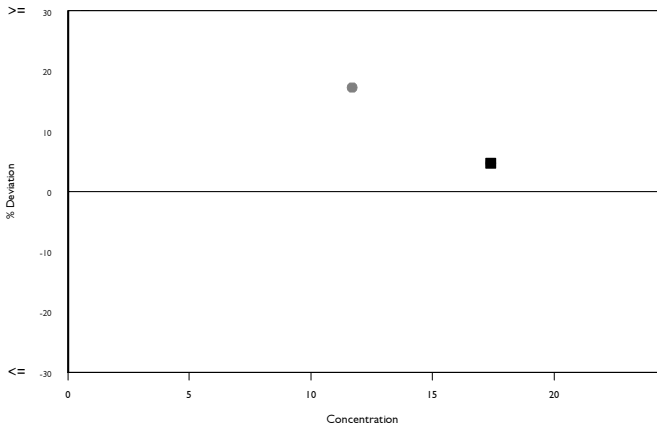
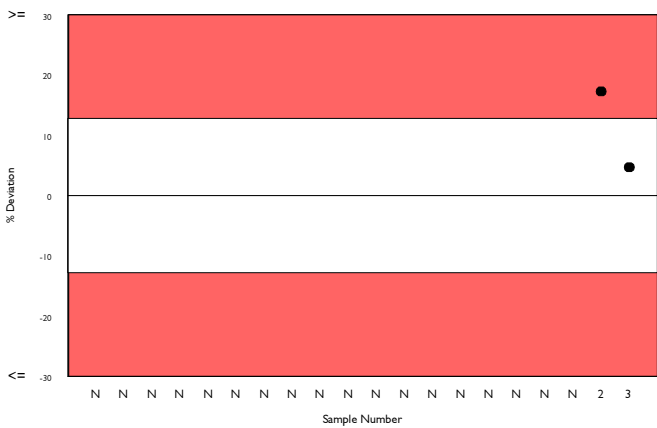
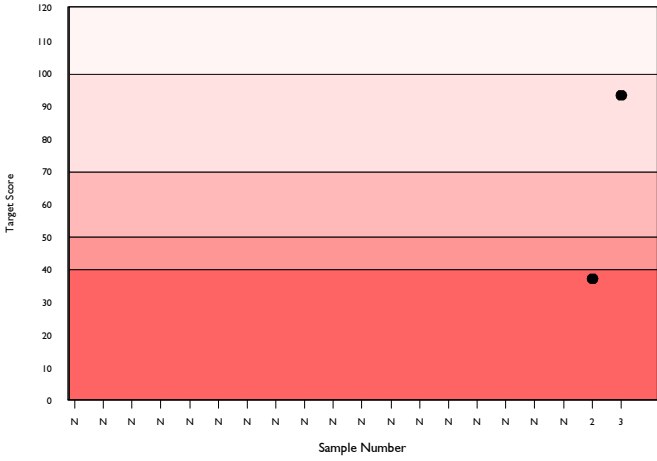
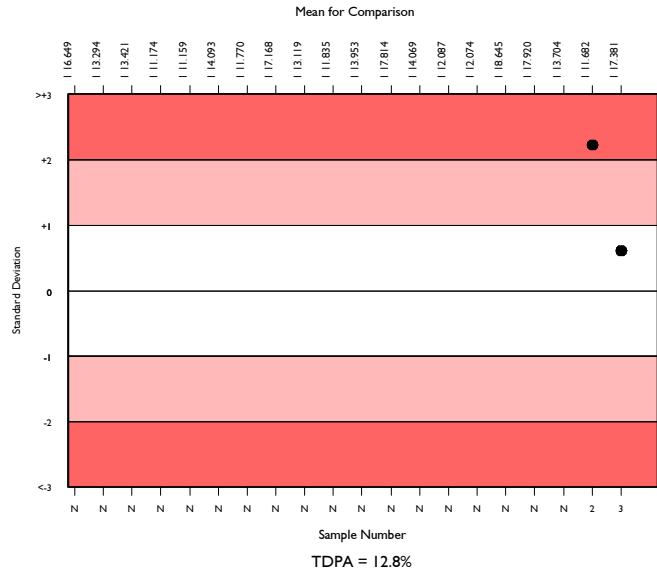
	N	Mean	CV%	U <sub>m</sub>	SDPA	Exc.
All Methods	2764	23.662	28.2	0.16	1.84	161
Siemens/Dade Thromborel S	658	18.373	7.4	0.07	1.43	57
Sysmex CA 500/600 series	213	17.381	7.3	0.11	1.35	16

▲ Your Result	18.200	SDI	0.61
		RMSDI	Too Few
■ Mean for Comparison	17.381	TS	93
		RMST	Too Few
		%DEV	4.7
		RM%DEV	Too Few

Acceptable limits derived from Biological Variation	N/A
Acceptable limits of performance for RIQAS	12.80%



Method	N	Mean	CV%	U <sub>m</sub>
Siemens/Dade Thromborel S	658	18.373	7.4	0.07
HemosIL RecombiPlasTin 2G	489	17.403	3.8	0.04
Siemens/Dade Innovin	410	28.852	8.6	0.15
Stago STA-NeoPTimal	395	34.070	8.5	0.18
Stago Neoplastine CI Plus	171	25.300	14.7	0.36
HemosIL PT-Fibrinogen HS Plus	41	27.913	5.7	0.31
Roche Cobas PT Screen	36	18.713	4.7	0.18
Human Thromboplastin	33	30.771	22.7	1.52
Beijing Succeder PT	28	20.371	7.4	0.35
Diagon, Dia-PT	27	22.884	19.8	1.09
Sclavo PT	26	26.358	6.2	0.40
Stago Neoplastine R	21	19.662	5.0	0.27
HemosIL ReadiplasTin	19	17.589	3.4	0.17
Roche Cobas PT Rec	22	38.686	28.5	2.93
Tcoag TriniCLOT PT Excel S	19	45.050	11.1	1.43
Helena Thromboplastin L	19	28.763	13.9	1.15
Mindray/Longisland PT	17	24.341	12.0	0.89
Biolabo Bio-TP	17	26.797	24.1	1.96
Biolabo Bio-TP (Low ISI)	14	31.264	6.1	0.64
Bio-Ksel PT Plus	14	16.557	2.0	0.11
Teco TEClot PT-S	12	23.400	21.0	1.77



Analyte	Mean for Comparison	Your Result	SDI	RMSDI	%DEV	RM%DEV	TS	RMTS	Performance
D-Dimer (Pilot)	191.779	188.960	-0.07	Too Few	-1.5	Too Few	120	Too Few	
Fibrinogen	138.910	139.300	0.03	Too Few	0.3	Too Few	120	Too Few	
Antithrombin III activity	54.370	53.800	-0.10	Too Few	-1.0	Too Few	120	Too Few	
aPTT as a ratio	1.970	1.990	0.09	Too Few	1.0	Too Few	120	Too Few	
aPTT in seconds	49.034	55.700	1.22	Too Few	13.6	Too Few	71	Too Few	
PT as an INR	1.558	1.530	-0.16	Too Few	-1.8	Too Few	120	Too Few	
PT activity	48.805	46.000	-0.43	Too Few	-5.7	Too Few	108	Too Few	
PT in seconds	17.381	18.200	0.61	Too Few	4.7	Too Few	93	Too Few	

ORMSDI N/A

ORM%DEV N/A

ORMTS N/A

END OF REPORT

