

Laboratorio Emotest s.r.l.

COAGULATION

CYCLE 15 SAMPLE 2

Explanation of codes used in this report

R - Results removed due to reconstitution error
N - No result returned
C - Result corrected

Authorised by: Stephen Doherty, RIQAS Manager

Issue No: 1

Issue Date: 22/02/2023

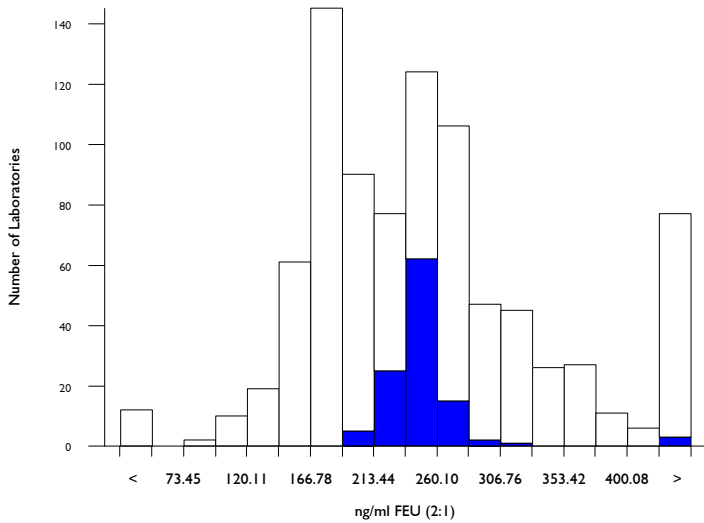
Randox Laboratories Limited
55 Diamond Road
CRUMLIN BT29 4QY
Tel: +44 (0)28 9445 4399
Fax: +44 (0)28 9445 4398
Email: mail@riqas.com

D-Dimer (Pilot), ng/ml FEU (2:1)

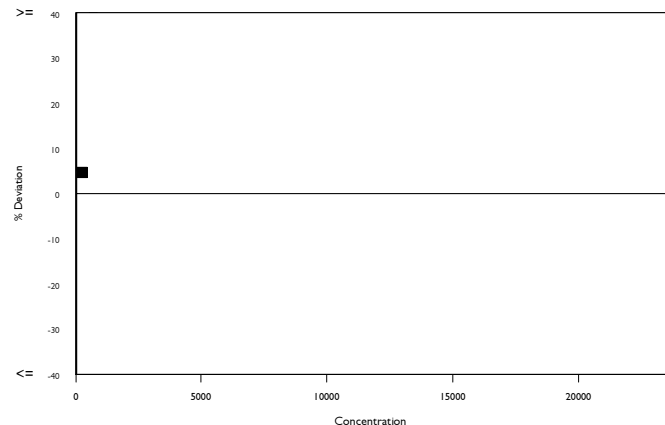
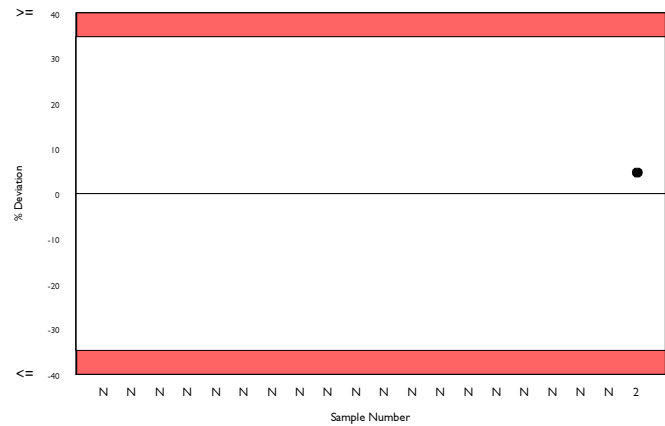
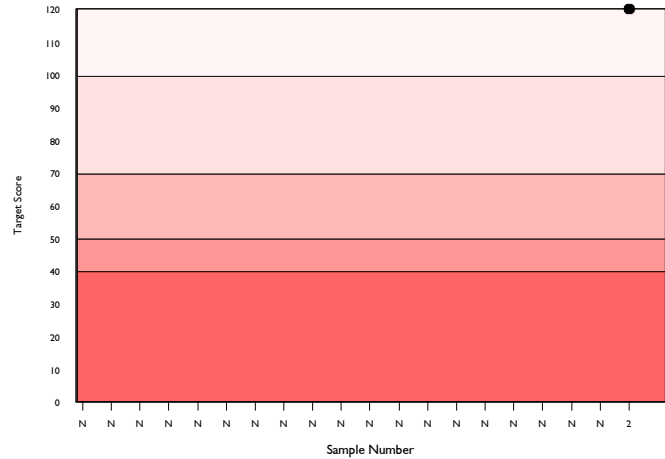
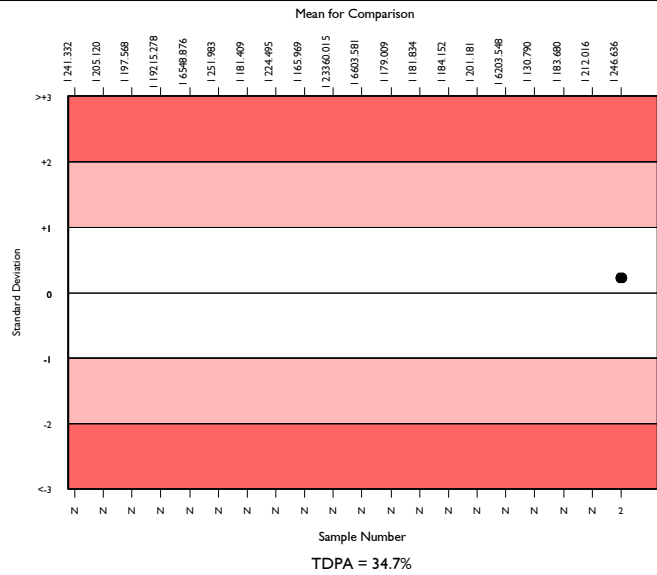
	N	Mean	CV%	U _m	SDPA	Exc.
All Methods	794	236.771	26.3	2.76	49.95	207
Biomerieux VIDAS Exclusion II	101	246.636	5.6	1.73	52.03	12
Biomerieux Vidas/miniVidas/Vidas 3	101	246.636	5.6	1.73	52.03	12

▲ Your Result	258.150	SDI	0.22
		RMSDI	Too Few
■ Mean for Comparison	246.636	TS	120
		RMTS	Too Few
		%DEV	4.7
		RM%DEV	Too Few

Acceptable limits derived from Biological Variation	N/A
Acceptable limits of performance for RIQAS	34.70%



Method	N	Mean	CV%	U _m
Siemens Innovance D-Dimer	196	178.213	10.2	1.62
HemosIL D-Dimer HS 500	149	261.714	18.3	4.89
Stago Sta Liatest D-DI/Plus	108	277.991	12.2	4.08
Biomerieux VIDAS Exclusion II	101	246.636	5.6	1.73
HemosIL D-Dimer	45	490.554	21.0	19.23
HemosIL D-Dimer HS	39	262.149	18.4	9.65
Roche Cobas D-DI 2	23	180.913	23.9	11.27
Roche Cobas D-DI2 citrated plasma	15	211.400	14.6	9.93
Abbott Architect/Alinity Quantia D-Dimer	10	455.224	6.5	11.77
Beckman AU D-Dimer	9	289.442	23.0	27.73
HemosIL D-Dimer 500	10	244.880	18.5	17.90
Roche Cobas t11/t711 D-DI2	3	184.000	12.2	16.27
Diagon D-Dimer	11	176.727	20.4	13.60
ImproGen D-Dimer	9	267.089	16.6	18.45
Finicare D-Dimer	9	295.556	38.1	46.91
Siemens Immulite 2000 D-Dimer	5	265.800	17.9	26.54
Roche Integra D-DI 2	7	298.056	30.9	43.49
Getein Biotech Inc D-Dimer	3	223.333	11.3	18.16
Kinetic Latex Turbidimetry D-Dimer	2	650.000	6.5	37.50
Mindray D-Dimer	3	311.667	32.1	72.29
Roche Cobas h232 D-Dimer	2	200.000	0.0	0.00

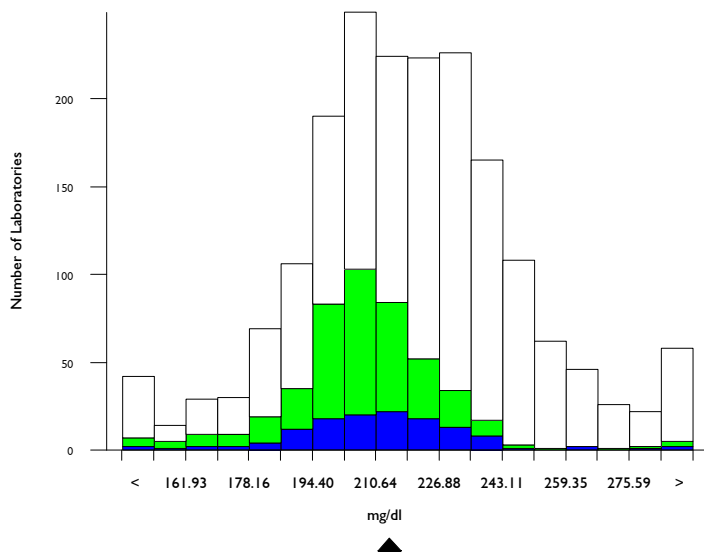


Fibrinogen, mg/dl

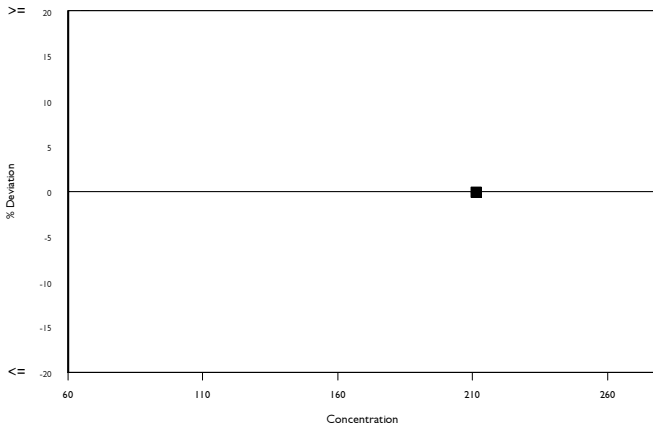
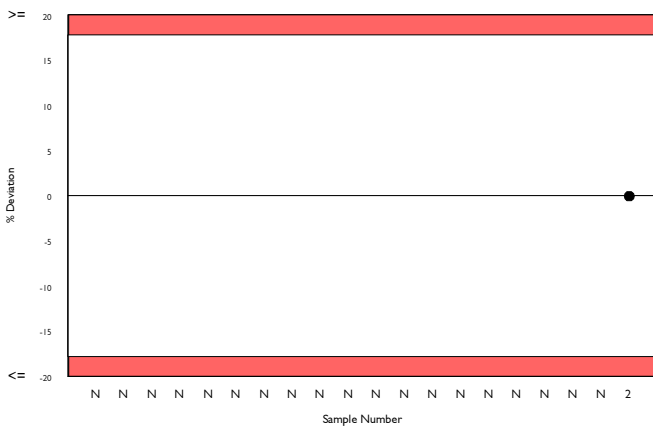
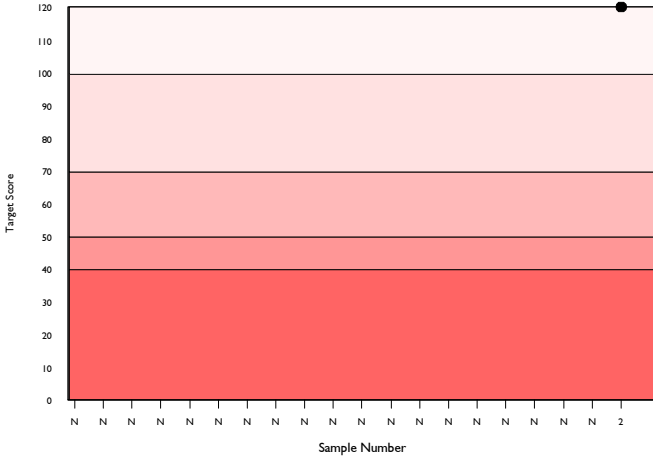
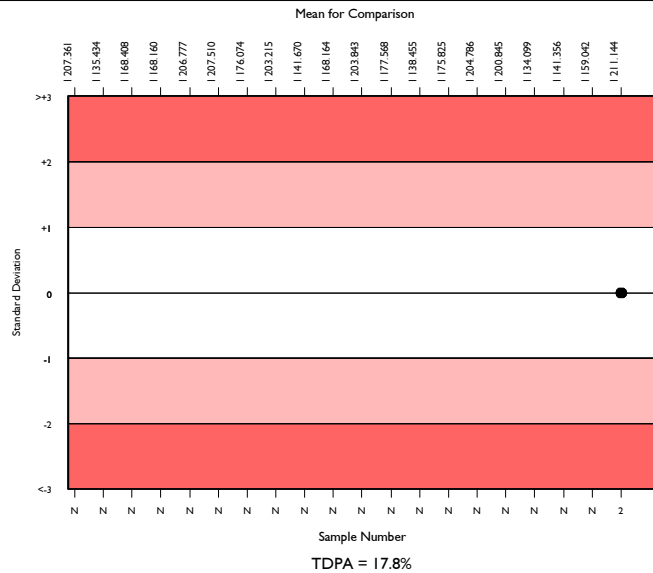
	N	Mean	CV%	U _m	SDPA	Exc.
All Methods	1733	218.763	9.9	0.65	23.67	156
Siemens/Dade Thrombin	429	208.768	6.5	0.81	22.59	42
Sysmex CA 500/600 series	117	211.144	7.3	1.77	22.84	11

▲ Your Result	211.000	SDI	-0.01
		RMSDI	Too Few
■ Mean for Comparison	211.144	TS	120
		RMTS	Too Few
		%DEV	-0.1
		RM%DEV	Too Few

Acceptable limits derived from Biological Variation	N/A
Acceptable limits of performance for RIQAS	17.80%



Method	N	Mean	CV%	U _m
Siemens/Dade Thrombin	429	208.768	6.5	0.81
Stago Fibrinogen/ Liquid-Fib	346	238.151	6.0	0.96
HemosL QFA (bovine thrombin)	216	210.480	9.3	1.65
HemosL Fibrinogen C	178	222.792	7.7	1.60
Siemens/Dade Multifibren U	175	209.503	7.6	1.50
Sclavo Fibrinogen	30	229.783	7.2	3.79
Diagon Dia-FIB	28	178.686	11.3	4.77
HemosL RecombiPlasTin 2G	25	212.070	7.3	3.89
Roche Cobas t511/t711 Fibrinogen	18	239.056	4.4	3.09
Technoclone Fibrinogen	17	247.882	8.1	6.10
Biolabo Bio-Fibri	14	228.264	6.9	5.28
HemosL PT-Fibrinogen HS Plus	16	242.038	8.4	6.35
Bio-Ksel Fibrinogen	14	242.214	13.8	11.17
Human Fibrinogen	14	237.901	15.6	12.42
Roche Cobas t411 Fibrinogen	13	223.769	7.7	6.00
Siemens/Dade Innovin derived Fibrinogen	12	166.092	18.8	11.24
Mindray/Longisland Fibrinogen	11	201.909	6.2	4.74
Tcoag TriniCLOT Fibrinogen	13	231.354	9.3	7.44
Teco Teclot Fibrinogen	13	213.615	13.8	10.19
Cobas Fibrinogen	12	230.958	5.7	4.74
Stago STA Fibrin-Prest Automate	10	229.300	5.1	4.60

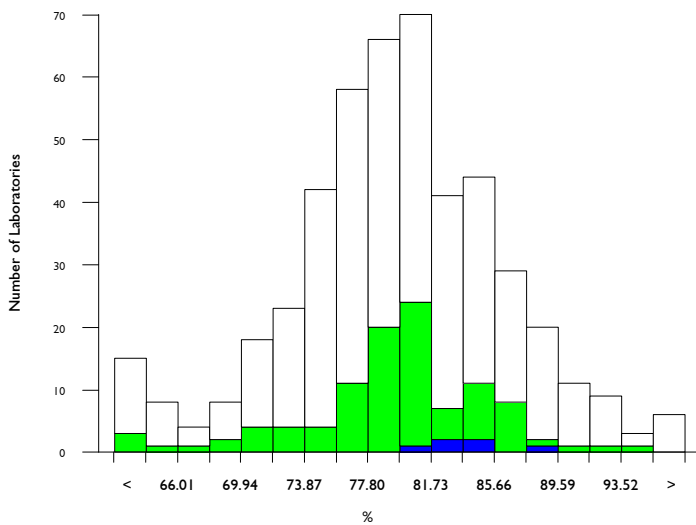


Antithrombin III activity, %

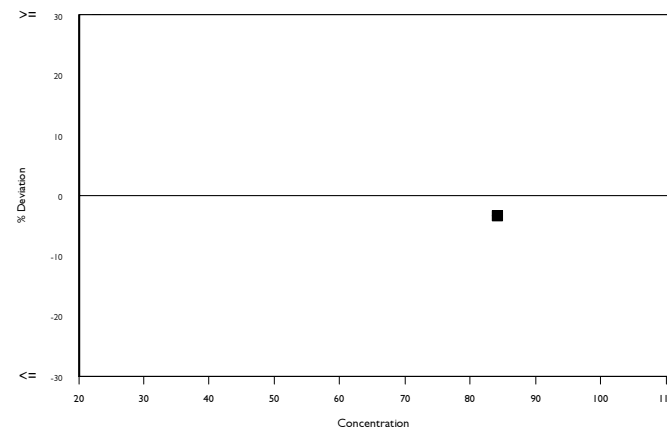
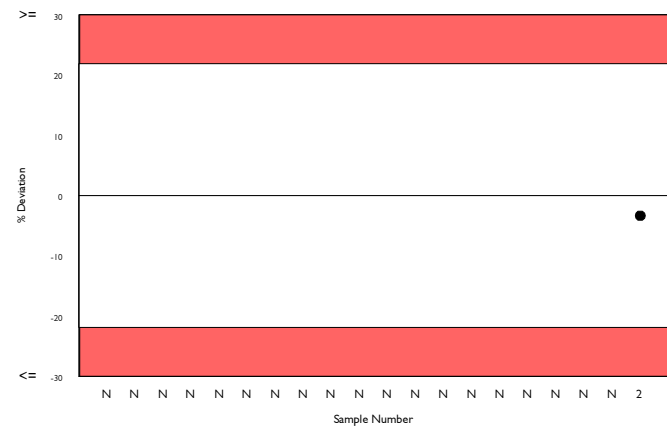
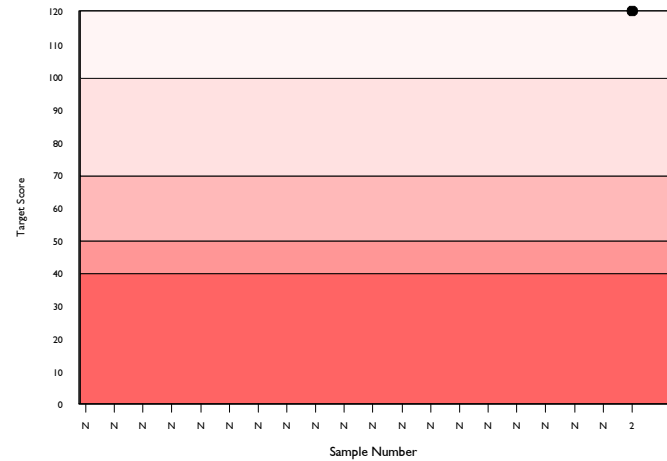
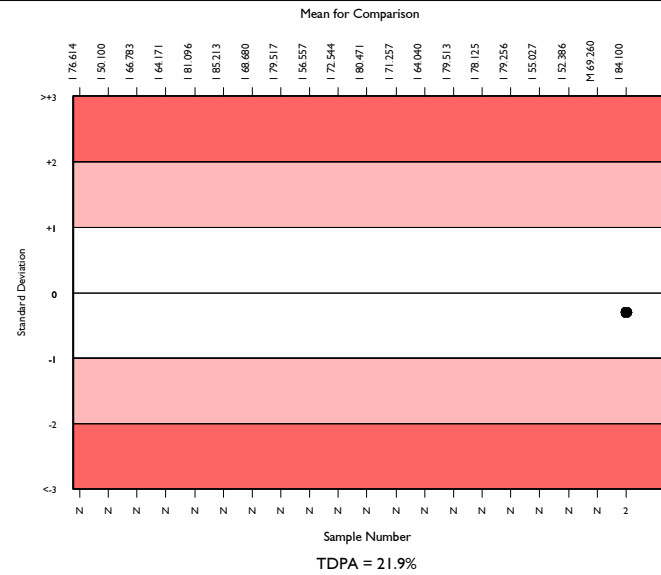
	N	Mean	CV%	U _m	SDPA	Exc.
All Methods	436	79.769	6.6	0.31	8.73	39
Siemens/Dade Berichrom ATIII	94	80.093	5.1	0.53	8.77	11
Sysmex CA 500/600 series	6	84.100	2.7	1.17	9.21	0

▲ Your Result	81.300	SDI RMSDI	-0.30 Too Few
■ Mean for Comparison	84.100	TS RMTS	120 Too Few
		%DEV RM%DEV	-3.3 Too Few

Acceptable limits derived from Biological Variation	N/A
Acceptable limits of performance for RIQAS	21.90%



Method	N	Mean	CV%	U _m
HemosL Liquid Antithrombin	149	77.984	6.1	0.49
Siemens/Dade Berichrom ATIII	94	80.093	5.1	0.53
Siemens Innovance Antithrombin III	67	80.361	4.8	0.59
STACHrom ATIII	58	84.922	5.2	0.72
Sclavo ATIII	16	77.100	6.3	1.52
Roche Chromogenic Thrombin	11	79.364	6.8	2.02
Siemens/Dade Antithrombin III	9	81.061	6.9	2.34
Roche Antithrombin	7	74.643	2.6	0.93
HaemoDiagnostics Antithrombin III (Fxa)	5	74.864	4.5	1.88
Chromogenix Substrate	3	77.933	12.4	6.97
Diagon ATIII	3	82.333	20.4	12.10
Helena Chrom-Z	2	64.800	0.2	0.12

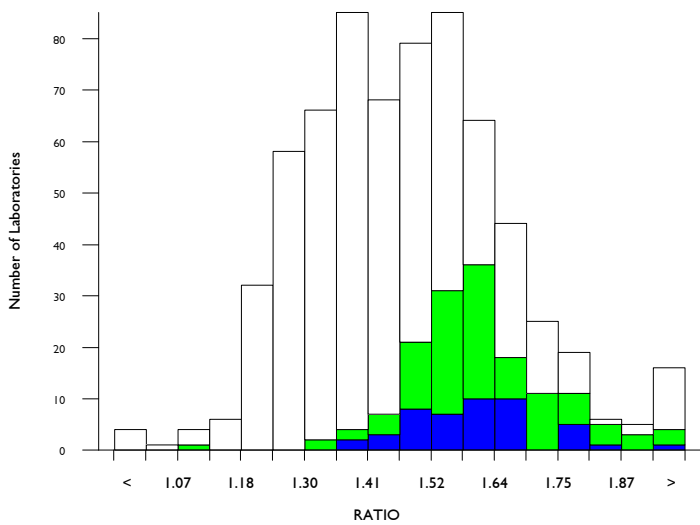


aPTT as a ratio, RATIO

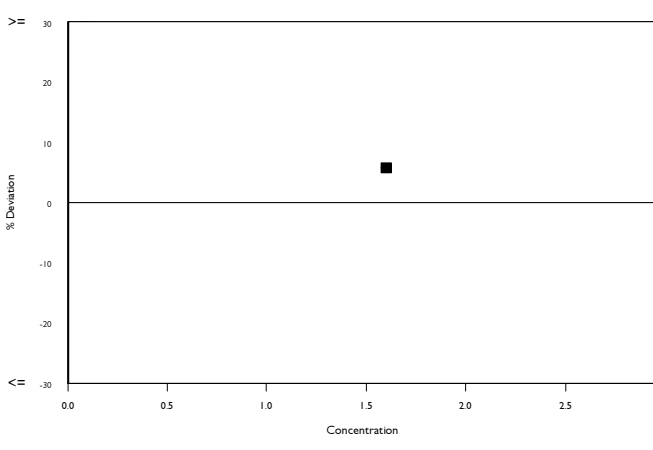
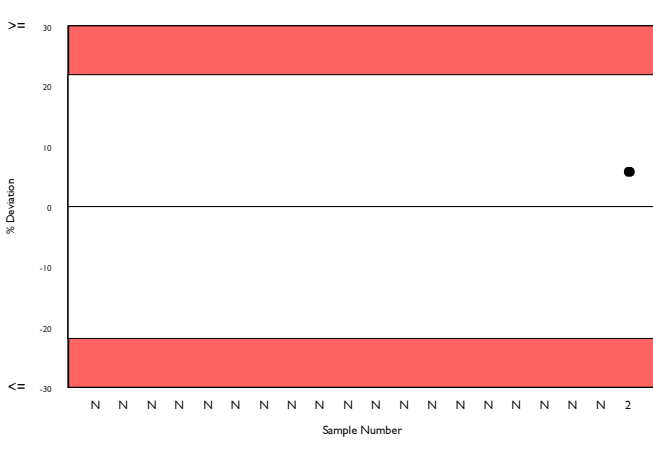
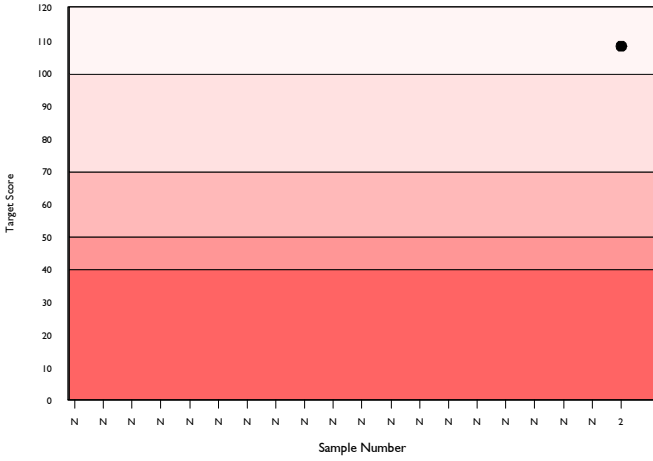
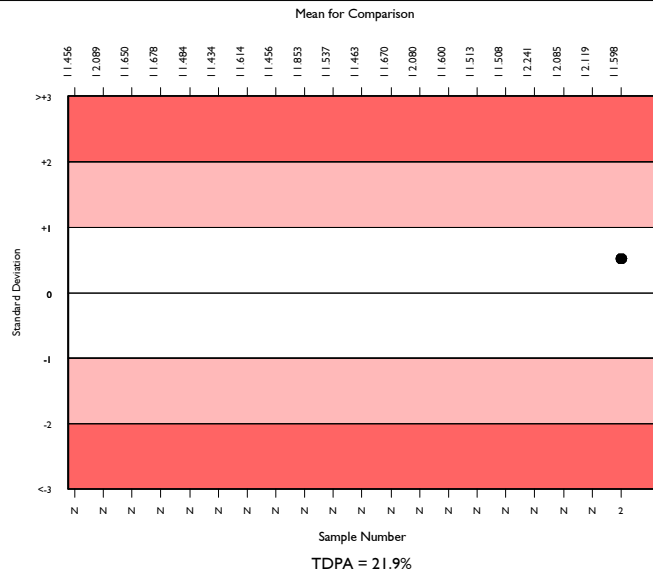
	N	Mean	CV%	U _m	SDPA	Exc.
All Methods	633	1.472	10.3	0.01	0.16	34
Siemens/Dade Actin FS	143	1.610	6.4	0.01	0.18	11
Sysmex CA 500/600 series	45	1.598	6.6	0.02	0.18	2

▲ Your Result	1.690	SDI	0.52
		RMSDI	Too Few
■ Mean for Comparison	1.598	TS	108
		RMTS	Too Few
		%DEV	5.8
		RM%DEV	Too Few

Acceptable limits derived from Biological Variation	N/A
Acceptable limits of performance for RIQAS	21.90%



Method	N	Mean	CV%	U _m
Siemens/Dade Actin FS	143	1.610	6.4	0.01
HemosIL Synthasil	107	1.436	6.7	0.01
HemosIL APTT-SP liquid	86	1.279	4.2	0.01
Siemens/Dade Actin FSL	45	1.370	4.9	0.01
Siemens/Dade Pathromtin SL	41	1.623	5.3	0.02
Stago CK Prest	34	1.536	3.2	0.01
Stago PTT Automate	33	1.386	3.1	0.01
Stago Cephascreen	29	1.469	6.7	0.02
Sclavo APTT-S	15	1.553	8.6	0.04
Stago aPTT	11	1.476	6.7	0.04
Bio-Ksel System APTTs	7	1.231	4.4	0.03
Diagon Dia-PTT Lyophilised	6	1.442	9.1	0.07
Siemens/Dade Actin SL	4	1.733	4.2	0.05
Diagon Dia-PTT Liquid	4	1.553	11.8	0.11
Roche Cobas APTT	4	1.623	8.0	0.08
Tcoag TriniCLOT aPTT S	3	1.363	17.6	0.17
Human Hemostat APTT	3	1.350	27.6	0.27
Mindray/Longisland APTT	3	1.673	16.4	0.20
Teco TEClot APTT	3	1.383	7.7	0.08
Biodevice aPTT	2	1.290	21.9	0.25
Convergent Diagnostics CT-PTT	2	1.568	13.7	0.19

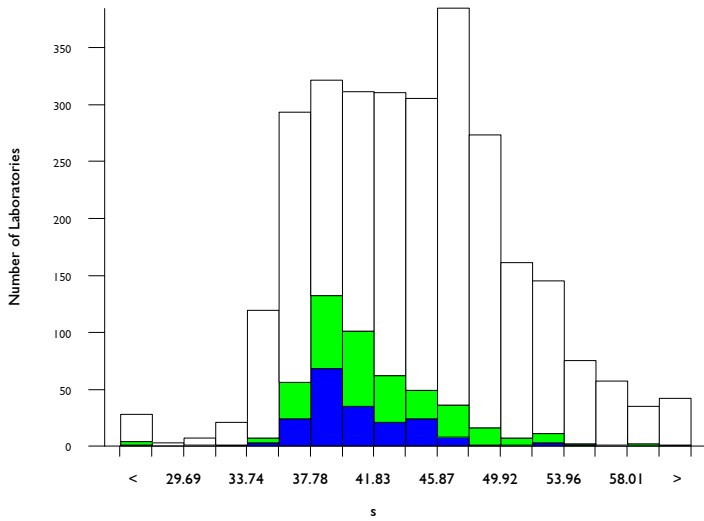


aPTT in seconds, s

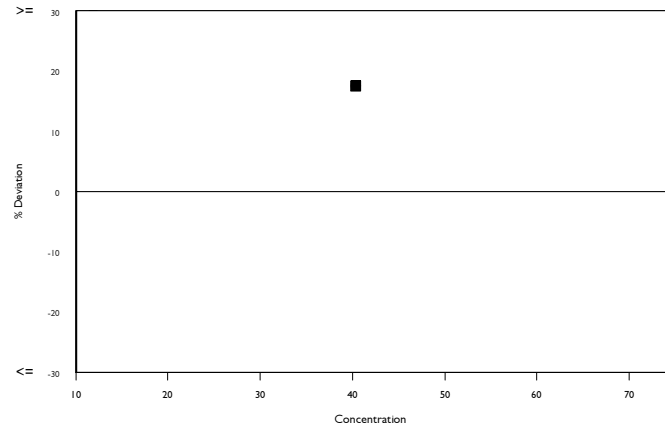
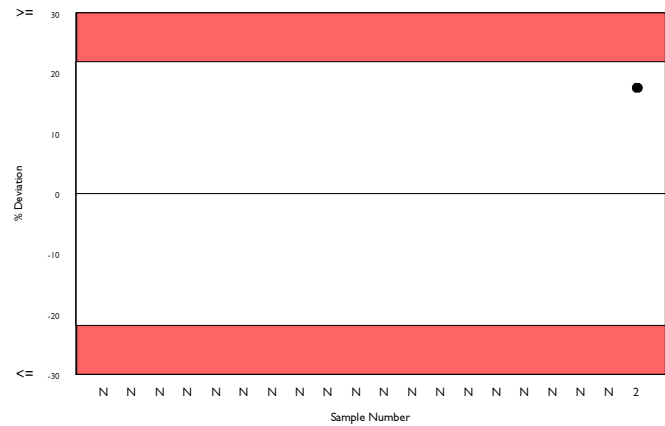
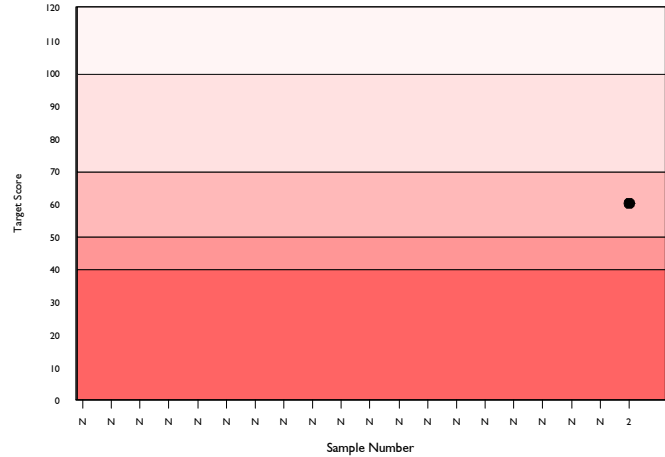
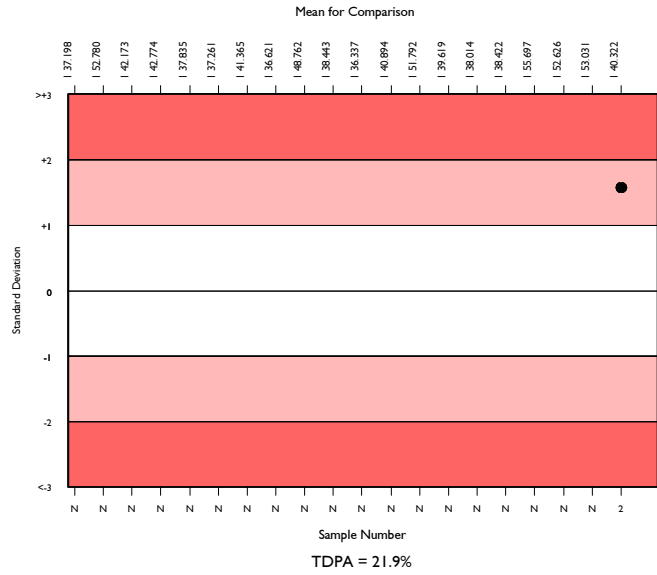
	N	Mean	CV%	U _m	SDPA	Exc.
All Methods	2726	43.856	12.3	0.13	4.90	165
Siemens/Dade Actin FS	455	41.079	7.8	0.19	4.59	34
Sysmex CA 500/600 series	177	40.322	6.5	0.25	4.51	15

▲ Your Result	47.400	SDI	1.57
		RMSDI	Too Few
■ Mean for Comparison	40.322	TS	60
		RMTS	Too Few
		%DEV	17.6
		RM%DEV	Too Few

Acceptable limits derived from Biological Variation	N/A
Acceptable limits of performance for RIQAS	21.90%



Method	N	Mean	CV%	U _m
Siemens/Dade Actin FS	455	41.079	7.8	0.19
Stago CK Prest	311	48.101	7.0	0.24
HemosIL Synthasil	292	43.384	5.1	0.16
HemosIL APTT-SP liquid	249	37.859	4.6	0.14
Siemens/Dade Actin FSL	255	36.692	5.7	0.17
Siemens/Dade Pathromtin SL	257	52.396	6.7	0.27
Stago PTT Automate	118	48.129	4.6	0.25
Stago Cephascreen	110	45.721	6.5	0.35
Stago aPTT	74	47.500	5.3	0.37
Beijing Succeeder aPTT	42	47.796	6.4	0.59
Sclavo APTT-S	33	42.694	9.0	0.83
Human Hemostat APTT	26	42.619	9.9	1.03
Roche Cobas APTT	28	44.961	7.6	0.81
Cobas aPTT MedS	26	48.705	8.2	0.98
Siemens/Dade Actin	24	44.600	8.8	1.00
Diagon Dia-PTT Liquid	23	44.370	9.3	1.08
Bio-Ksel System APTTs	20	41.690	3.9	0.46
Biolabo Bio-CK APTT	20	44.548	12.0	1.49
Diagon Dia-PTT Lyophilised	20	48.149	12.2	1.65
Teco TEClot APTT	19	43.174	10.5	1.30
Tcoag TriniCLOT aPTT S	17	44.753	6.3	0.86

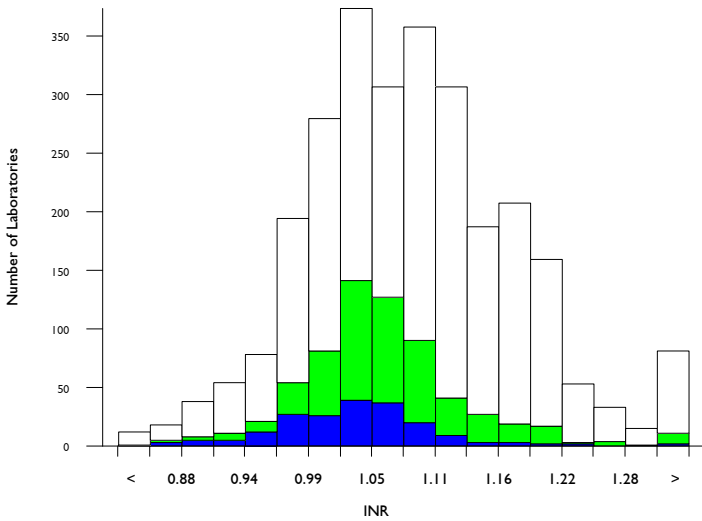


PT as an INR, INR

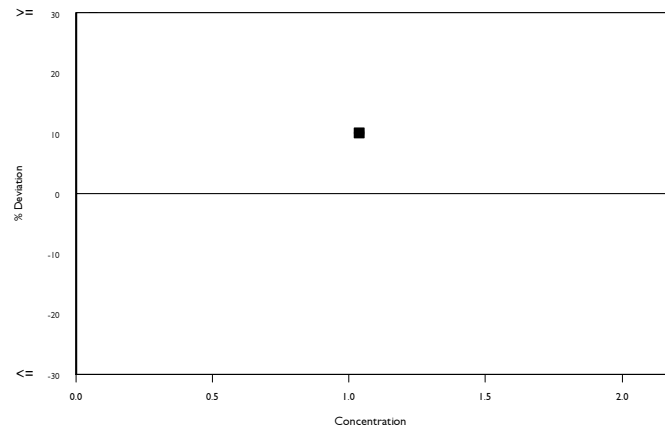
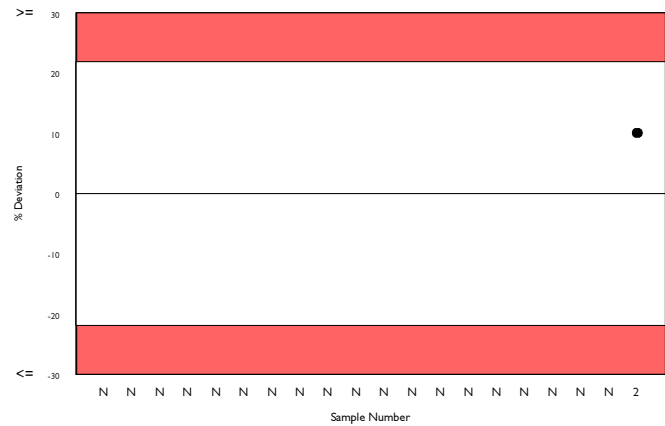
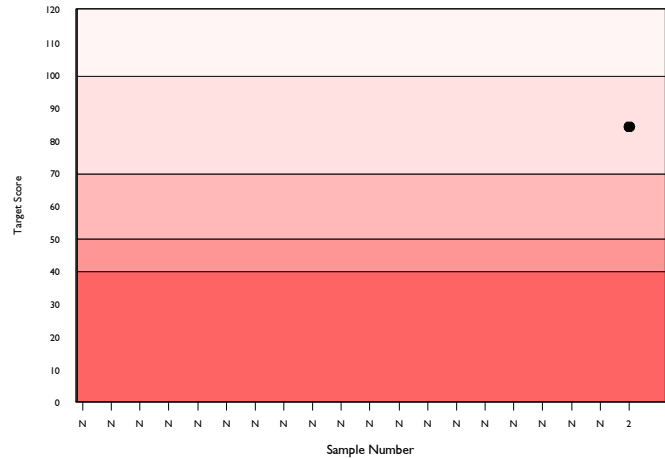
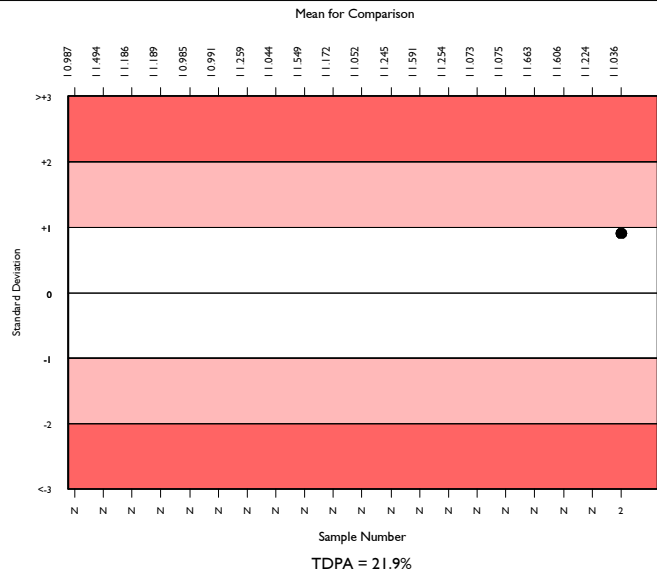
	N	Mean	CV%	U _m	SDPA	Exc.
All Methods	2577	1.084	7.0	0.00	0.12	173
Siemens/Dade Thromborel S	609	1.057	5.2	0.00	0.12	53
Sysmex CA 500/600 series	180	1.036	5.1	0.00	0.12	17

▲ Your Result	1.140	SDI	0.90
		RMSDI	Too Few
■ Mean for Comparison	1.036	TS	84
		RMTS	Too Few
		%DEV	10.1
		RM%DEV	Too Few

Acceptable limits derived from Biological Variation	N/A
Acceptable limits of performance for RIQAS	21.90%



Method	N	Mean	CV%	U _m
Siemens/Dade Thromborel S	609	1.057	5.2	0.00
HemosIL RecombiPlasTin 2G	476	1.026	4.3	0.00
Stago STA-NeoPTimal	384	1.148	4.1	0.00
Siemens/Dade Innovin	381	1.137	3.6	0.00
Stago Neoplastine CI Plus	156	1.142	5.8	0.01
Beijing Succeder PT	44	0.999	6.7	0.01
HemosIL PT-Fibrinogen HS Plus	41	1.009	6.2	0.01
Roche Cobas PT Screen	34	1.136	3.7	0.01
Sclavo PT	27	1.024	4.9	0.01
Diagon, Dia-PT	24	1.073	8.3	0.02
Human Thromboplastin	24	1.066	8.0	0.02
Stago Neoplastine R	22	1.031	2.1	0.01
Roche Cobas PT Rec	20	1.167	1.6	0.01
Biolabo Bio-TP (Low ISI)	17	1.214	4.8	0.02
HemosIL ReadPlasTin	18	1.039	6.5	0.02
Tcoag TriniCLOT PT Excel S	17	1.216	7.1	0.03
Bio-Ksel PT Plus	15	1.030	4.6	0.02
Mindray/Longisland PT	16	1.072	7.0	0.02
Helena Thromboplastin L	15	1.043	7.1	0.02
Technoclone Technoplastin HIS	12	1.032	5.4	0.02
Teco TEClot PT-S	12	0.984	5.5	0.02

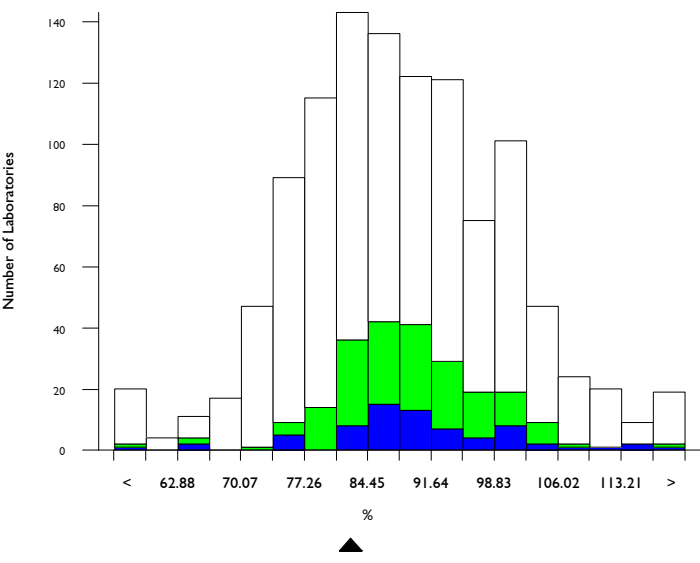


PT activity, %

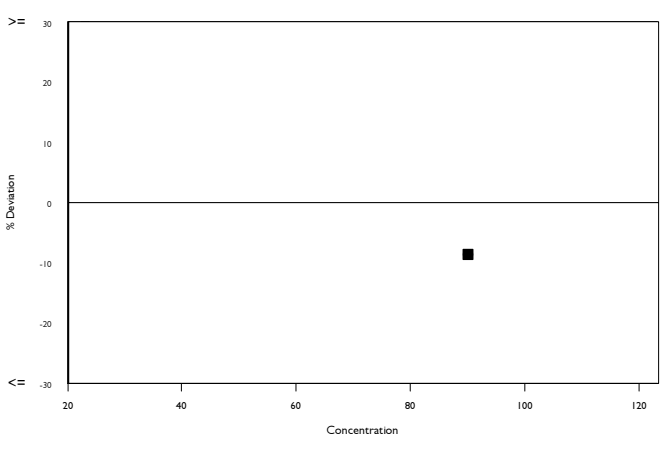
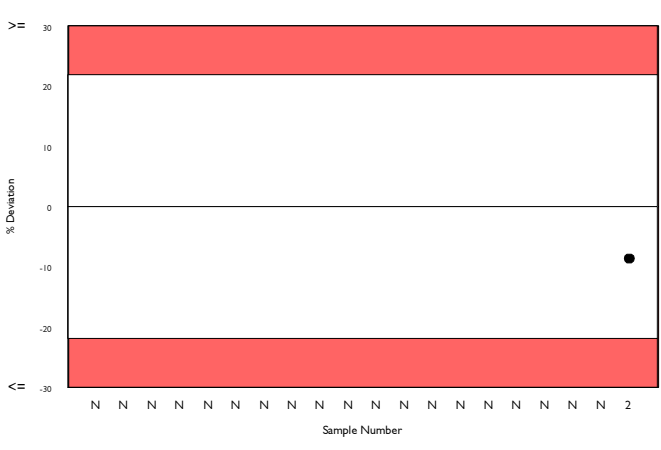
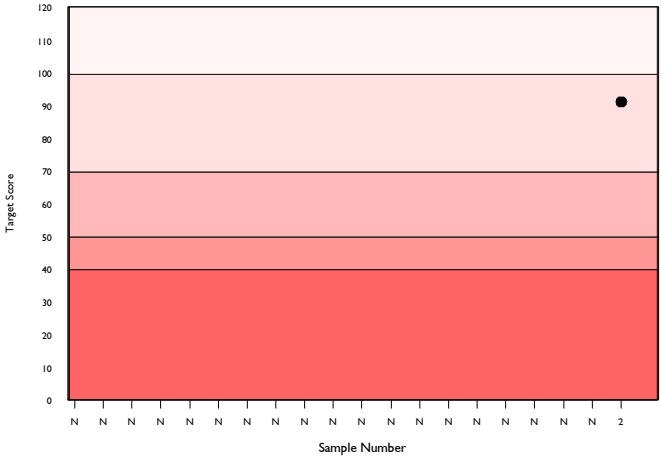
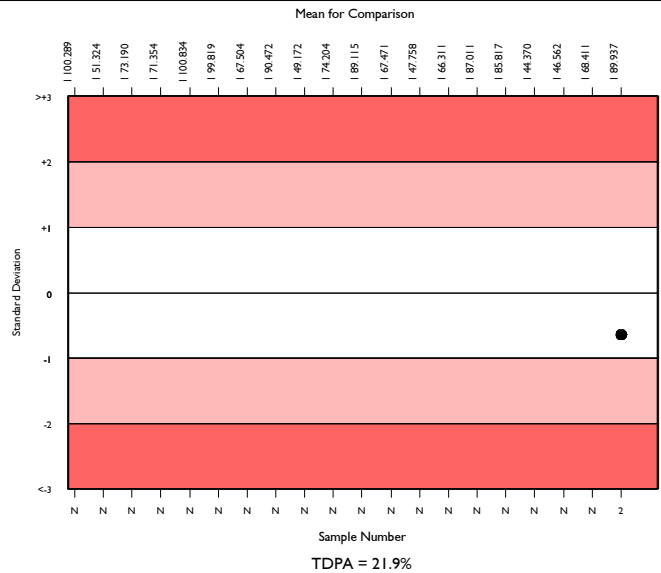
	N	Mean	CV%	U _m	SDPA	Exc.
All Methods	1044	88.050	10.9	0.37	11.72	76
Siemens/Dade Thromborel S	217	89.299	7.9	0.60	11.89	15
Sysmex CA 500/600 series	63	89.937	8.4	1.19	11.97	7

▲ Your Result	82.200	SDI	-0.65
		RMSDI	Too Few
■ Mean for Comparison	89.937	TS	91
		RMTS	Too Few
		%DEV	-8.6
		RM%DEV	Too Few

Acceptable limits derived from Biological Variation	N/A
Acceptable limits of performance for RIQAS	21.90%



Method	N	Mean	CV%	U _m
Stago STA-NeoPTimal	228	81.963	5.5	0.37
Siemens/Dade Thromborel S	217	89.299	7.9	0.60
HemosIL RecombiPlasTin 2G	205	95.424	6.5	0.54
Siemens/Dade Innovin	75	77.501	5.5	0.61
Stago Neoplastine CI Plus	36	80.842	7.4	1.25
HemosIL PT-Fibrinogen HS Plus	38	101.356	11.6	2.38
Beijing Succeeder PT	23	106.020	7.9	2.18
Sclavo PT	19	97.616	3.7	1.02
Biolabo Bio-TP (Low ISI)	15	75.040	7.7	1.86
Stago Neoplastine R	14	93.786	4.4	1.39
Diagon, Dia-PT	13	88.523	7.2	2.21
Tcoag TriniCLOT PT Excel S	12	67.421	6.4	1.55
Human Thromboplastin	11	87.425	23.7	7.80
Roche Cobas PT Screen	10	86.350	9.7	3.29
Mindray/Longisland PT	10	86.671	13.1	4.49
HemosIL ReadiPlasTin	9	95.644	9.9	3.93
Roche Cobas PT Rec	8	71.613	4.5	1.41
Helena Thromboplastin L	8	97.663	9.3	4.03
Stago Neoplastine CI	7	84.914	9.4	3.77
Diagon, Dia-PT R	5	91.260	7.4	3.76
Biolabo Bio-TP	5	81.240	7.5	3.40

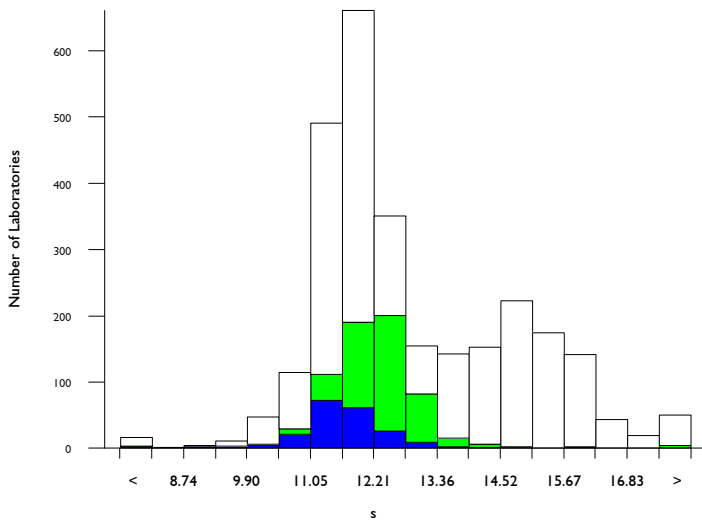


PT in seconds, s

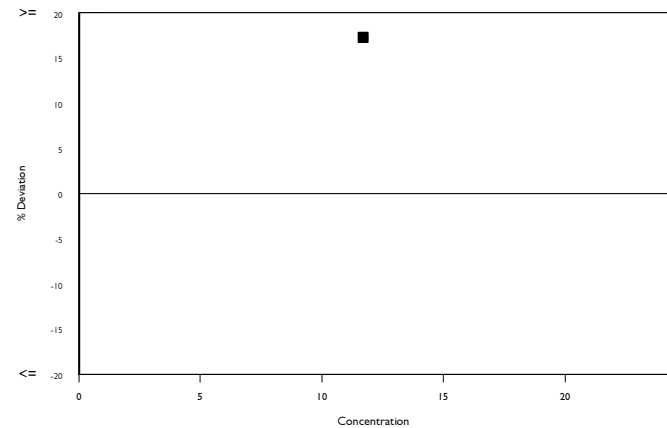
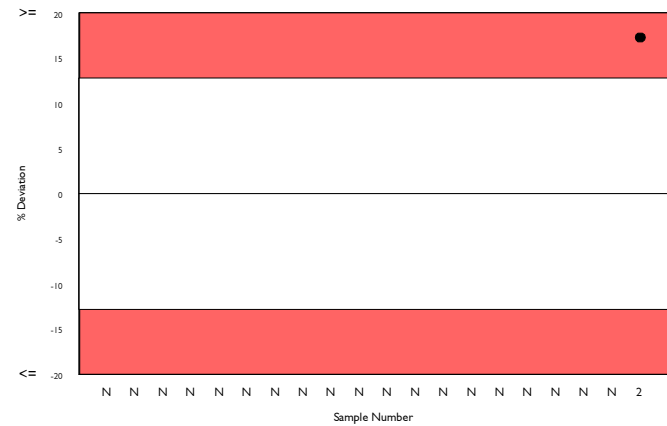
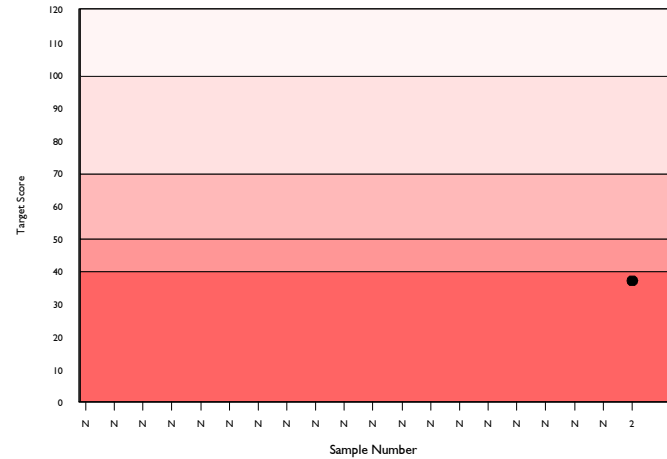
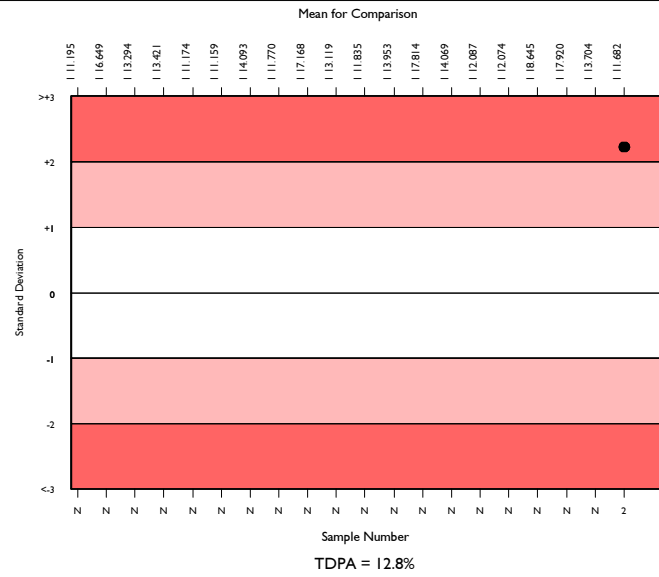
	N	Mean	CV%	U _m	SDPA	Exc.
All Methods	2655	12.790	12.0	0.04	1.00	135
Siemens/Dade Thromborel S	611	12.161	4.8	0.03	0.95	44
Sysmex CA 500/600 series	186	11.682	4.6	0.05	0.91	18

▲ Your Result	13.700	SDI	2.22
		RMSDI	Too Few
■ Mean for Comparison	11.682	TS	37
		RMTS	Too Few
		%DEV	17.3
		RM%DEV	Too Few

Acceptable limits derived from Biological Variation	N/A
Acceptable limits of performance for RIQAS	12.80%
SDI in bottom 5% of peer group	
TS & %DEV outside limits	



Method	N	Mean	CV%	U _m
Siemens/Dade Thromborel S	611	12.161	4.8	0.03
HemosIL RecombiPlasTin 2G	465	11.652	3.1	0.02
Siemens/Dade Innovin	385	11.794	3.7	0.03
Stago STA-NeoPTimal	384	15.354	3.5	0.03
Stago Neoplastine CI Plus	170	14.796	5.2	0.07
Beijing Succeder PT	41	12.741	6.0	0.15
HemosIL PT-Fibrinogen HS Plus	41	14.468	3.3	0.09
Roche Cobas PT Screen	36	11.699	2.8	0.07
Human Thromboplastin	25	13.402	5.6	0.19
Diagon, Dia-PT	24	13.547	6.6	0.23
Sclavo PT	24	13.692	2.8	0.10
Roche Cobas PT Rec	20	10.347	2.5	0.07
HemosIL ReadiplasTin	19	11.579	3.6	0.12
Stago Neoplastine R	20	13.845	3.0	0.12
Tcoag TriniCLOT PT Excel S	17	14.856	2.3	0.10
Biolabo Bio-TP (Low ISI)	15	16.020	2.9	0.15
Biolabo Bio-TP	15	14.550	8.6	0.41
Helena Thromboplastin L	14	13.057	4.7	0.20
Mindray/Longisland PT	15	13.143	5.5	0.23
Bio-Ksel PT Plus	12	11.283	3.5	0.14
Teco TEClot PT-S	11	13.018	4.0	0.20



Analyte	Mean for Comparison	Your Result	SDI	RMSDI	%DEV	RM%DEV	TS	RMTS	Performance
D-Dimer (Pilot)	246.636	258.150	0.22	Too Few	4.7	Too Few	120	Too Few	
Fibrinogen	211.144	211.000	-0.01	Too Few	-0.1	Too Few	120	Too Few	
Antithrombin III activity	84.100	81.300	-0.30	Too Few	-3.3	Too Few	120	Too Few	
aPTT as a ratio	1.598	1.690	0.52	Too Few	5.8	Too Few	108	Too Few	
aPTT in seconds	40.322	47.400	1.57	Too Few	17.6	Too Few	60	Too Few	
PT as an INR	1.036	1.140	0.90	Too Few	10.1	Too Few	84	Too Few	
PT activity	89.937	82.200	-0.65	Too Few	-8.6	Too Few	91	Too Few	
PT in seconds	11.682	13.700	2.22	Too Few	17.3	Too Few	37	Too Few	▲

ORMSDI N/A

ORM%DEV N/A

ORMTS N/A

END OF REPORT